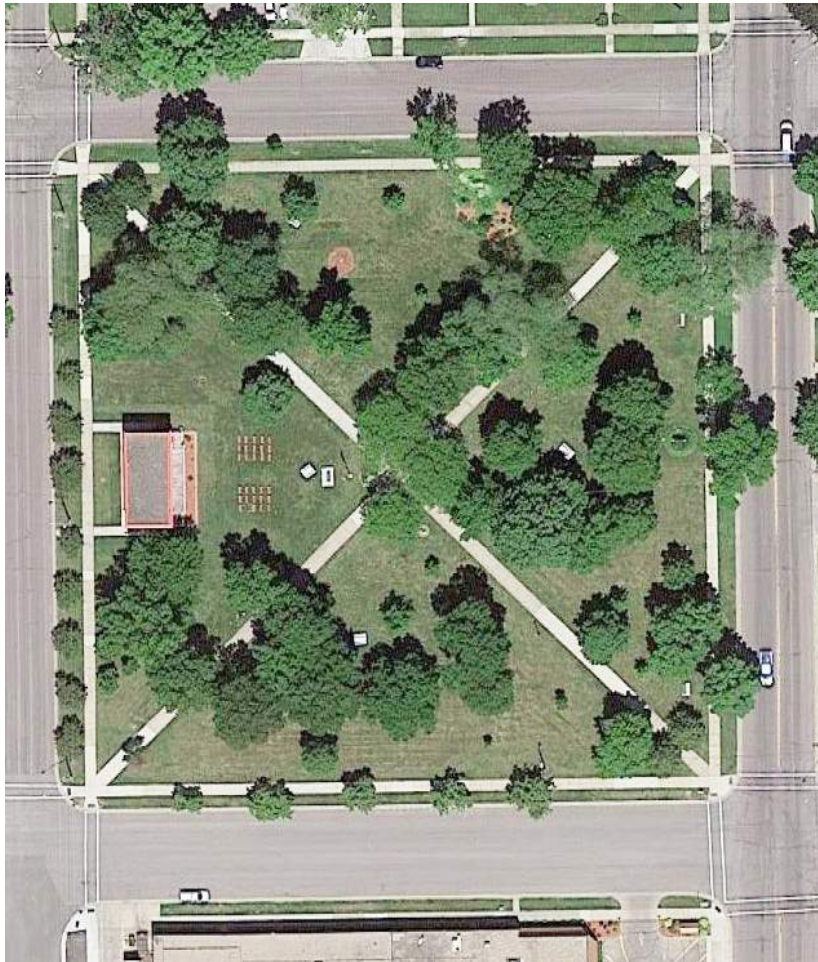


# CENTRAL PARK



**LOCATION :** 510 NW 2nd Avenue

**SIZE :** 2.5 acres

**CLASSIFICATION :** Community Park/Playfield

**REC CENTER :** No

**SCHOOL CONNECTIONS :** None

**CURRENT PROJECTS:** None



## CONTEXT

This historic park is located downtown and within walking distance to the 200 and 300 block of Central Ave. Central Park hosts the Faribault Heritage Days and other community events. Farmers' Markets are held during the summer and fall on Wednesdays and Saturdays.

## CURRENT CONDITIONS AND CONCERNS

Overall the park is in good condition and well maintained. The gardens and mature trees appear to be healthy. There is adequate power to support larger events. The picnic areas do not meet ADA accessibility. The band shell and performance area are in very good condition but have a limited amount of space for seating. The rear of the band shell is visible to neighbors and could use a buffer or visual improvement.

## PARK FACILITY CONDITIONS (SITE VERIFIED)

● GOOD ● FAIR ● POOR

● POWER FOR LARGER EVENTS

● PICNIC AREAS

● RESTROOM

● BAND SHELL

## SEASONAL AMENITIES

● HIGH USE ● LIMITED ● LOW USE

● SPRING

● FALL

● SUMMER

● WINTER



**LEGEND**

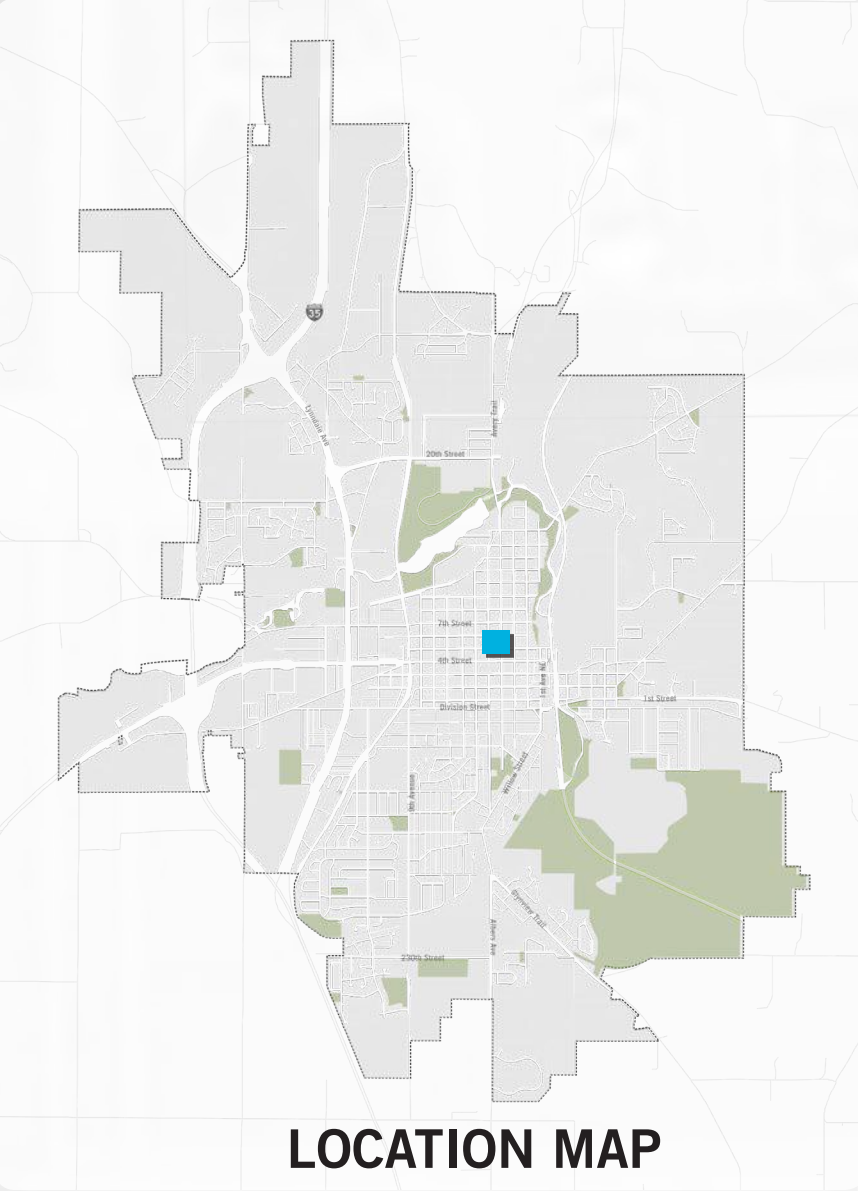
- 1 EXISTING STAGE
- 2 PLAZA/STAGE SEATING
- 3 POLLINATOR GARDENS
- 4 PULL OFF FOR FOOD TRUCKS
- 5 PUBLIC ART/GATEWAYS
- 6 EXISTING SIGN WITH LANDSCAPE IMPROVEMENTS

3 R D A V E N W

6 T H S T N W

2 N D A V E N W

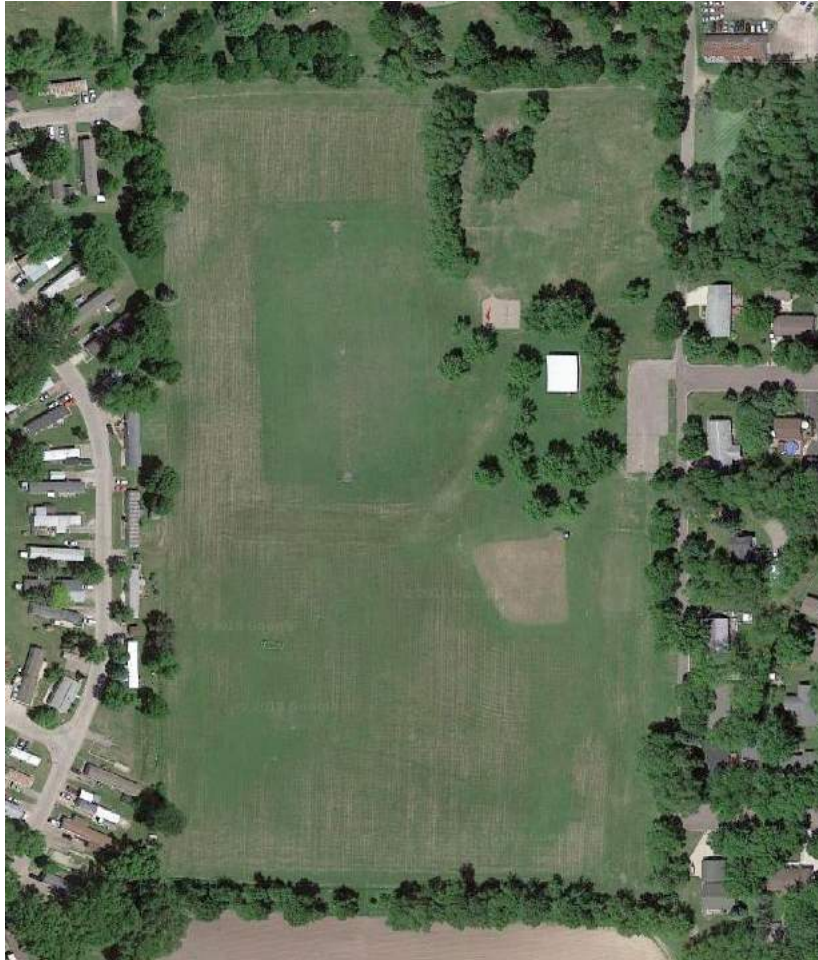
5 T H S T N W



LOCATION MAP



# MAPLE LAWN PARK



**LOCATION :** 500 Maple Lawn Cartway

**SIZE :** 18.0 acres

**CLASSIFICATION :** Community Park/Playfield

**REC CENTER :** No

**SCHOOL CONNECTIONS :** None

**CURRENT PROJECTS:** None



## CONTEXT

Maple Lawn Park is located in the southwest corner of the City of Faribault and adjacent to the major thoroughfare, Lyndale Ave S. Access to the park can be challenging due to lack of signage on Lyndale Ave S and the winding neighborhood street used for vehicular access. Maple Lawn Ave is a one-way and creates challenging vehicular traffic flow. The park is bordered to the east by a small, single family residential neighborhood and to the west by Evergreen Estates, a manufactured home community. Maple Lawn Cemetery borders the north, and agricultural fields to the south.

## CURRENT CONDITIONS AND CONCERNS

The overall condition of the park is fair to poor. Large athletic fields appear to be well maintained but many areas appear to be susceptible to flooding and settling due to inadequate drainage. None of the park features, including the parking lot, meet ADA guidelines. The picnic shelter and playground are in poor condition. The horseshoe area appears to be recently renovated and in good, working condition.

## PARK FACILITY CONDITIONS (SITE VERIFIED)

● GOOD ● FAIR ● POOR

|                  |                      |
|------------------|----------------------|
| ● PLAYGROUND     | ● FOOTBALL FIELD     |
| ● PICNIC AREAS   | ● SOCCER/RUGBY FIELD |
| ● PICNIC SHELTER | ● SOFTBALL FIELD     |
| ● HORSESHOES     | ● BASKETBALL COURT   |

## SEASONAL AMENITIES

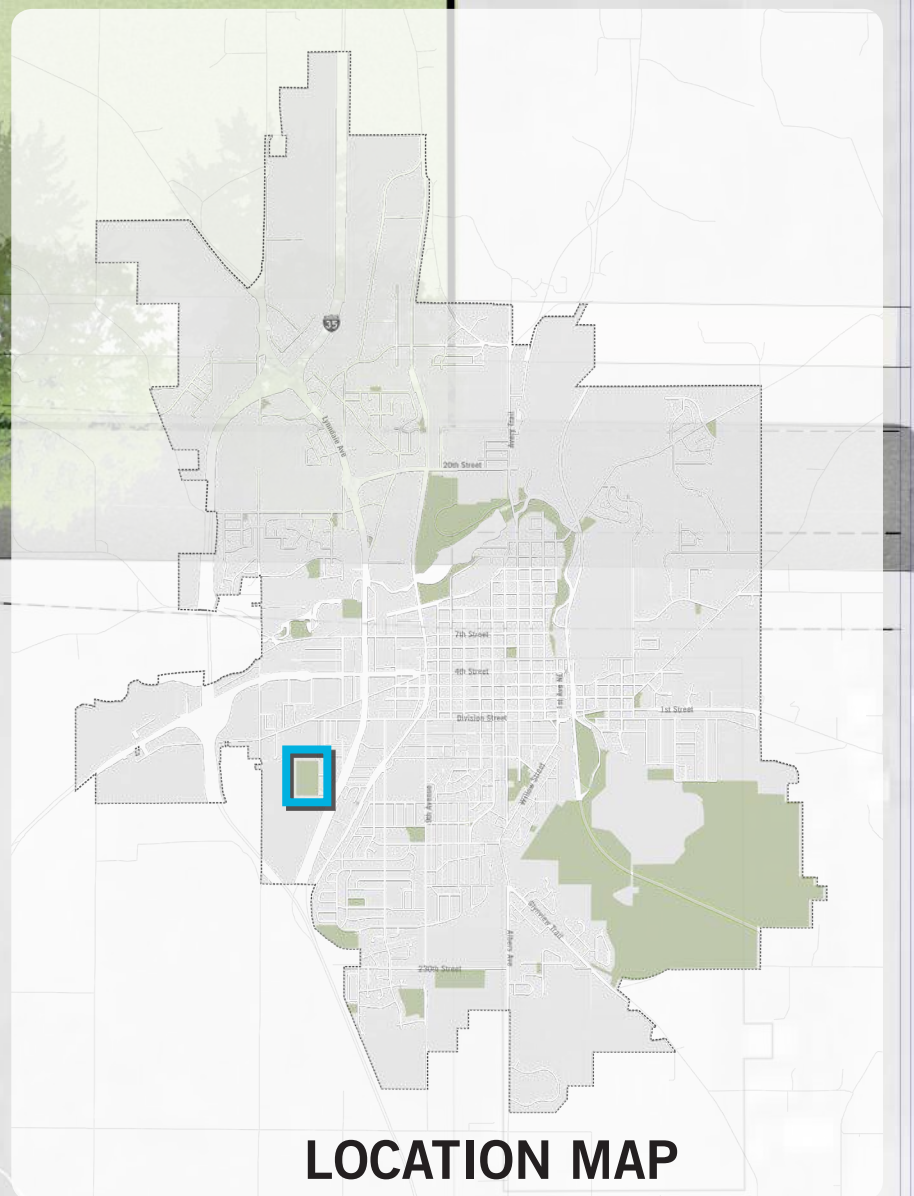
● HIGH USE ● LIMITED ● LOW USE

|          |          |
|----------|----------|
| ● SPRING | ● FALL   |
| ● SUMMER | ● WINTER |



## LEGEND

- 1 FLEX FIELD
- 2 PLAYGROUND
- 3 PARKING
- 4 EXISTING PICNIC SHELTER WITH IMPROVED PLAZA & GRILLS
- 5 DISC GOLF
- 6 PRAIRIE WITH NATURE WALK
- 7 TWO-WAY STREET





# NORTH ALEXANDER PARK



**LOCATION :** 1810 2nd Avenue NW



**SIZE :** 131.1 acres

**CLASSIFICATION :** Community Park/Playfield

**REC CENTER :** No

**SCHOOL CONNECTIONS :** None

**CURRENT PROJECTS:** None

## CONTEXT

North Alexander Park is a premier, destination athletic park in Faribault. Located north of the Cannon River Reservoir, the park is adjacent to and has views of the historic Faribault Woolen Mill. The Faribault Family Aquatic Center and Rice County Fairgrounds border the north side of the park as well. This park hosts many of the City's athletic tournaments. It also has the largest play area in Faribault.

## CURRENT CONDITIONS AND CONCERNS

This park is well maintained and is generally in good condition. The fencing and ball fields are in good condition and operate well for the community. The play area is also in good condition and has two age-separated play equipment areas. They share a container. The buildings are also well maintained and heavily used. Some picnic shelters are aging and should be replaced or renovated. Many areas of the park, including the play containers, swings, and picnic areas do not meet ADA guidelines.

## PARK FACILITY CONDITIONS (SITE VERIFIED)

● GOOD ● FAIR ● POOR

|                   |                   |
|-------------------|-------------------|
| ● PLAYGROUND      | ● BASEBALL FIELD  |
| ● PICNIC AREAS    | ● SOFTBALL FIELD  |
| ● PICNIC SHELTER  | ● HOCKEY ARENA    |
| ● RESTROOM        | ● TRAILS          |
| ● AQUATIC CENTER  | ● FOOD & BEVERAGE |
| ● SAND VOLLEYBALL | ● RIVER/PONDS     |
| ● FOOTBALL FIELDS | ● PARK & RIDE     |

## SEASONAL AMENITIES

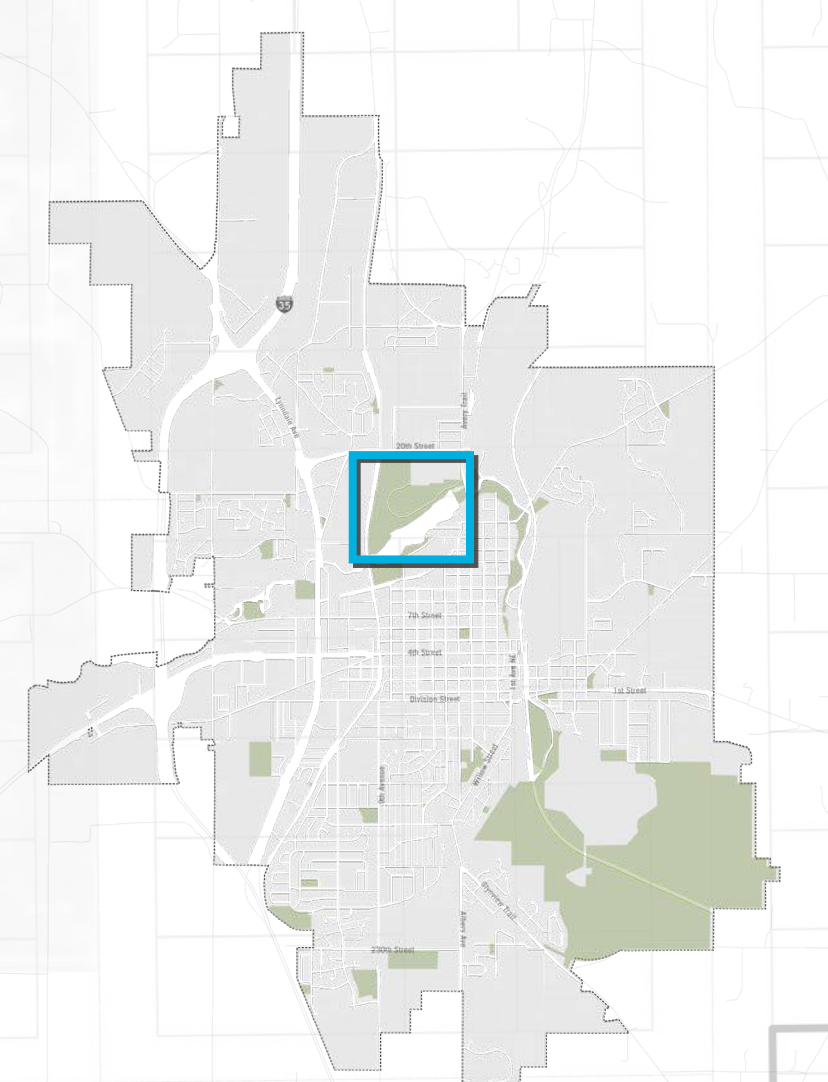
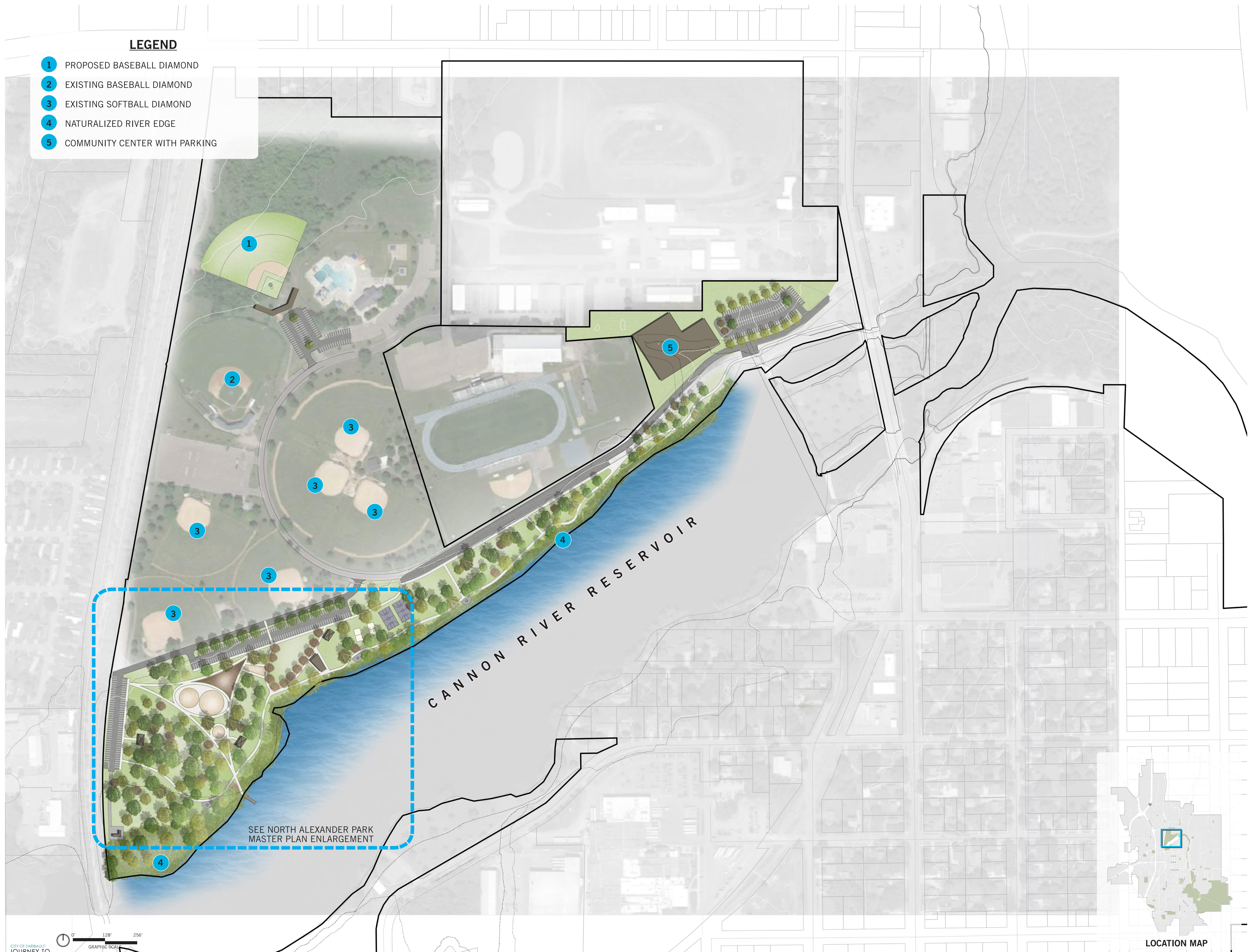
● HIGH USE ● LIMITED ● LOW USE

|          |          |
|----------|----------|
| ● SPRING | ● FALL   |
| ● SUMMER | ● WINTER |



## LEGEND

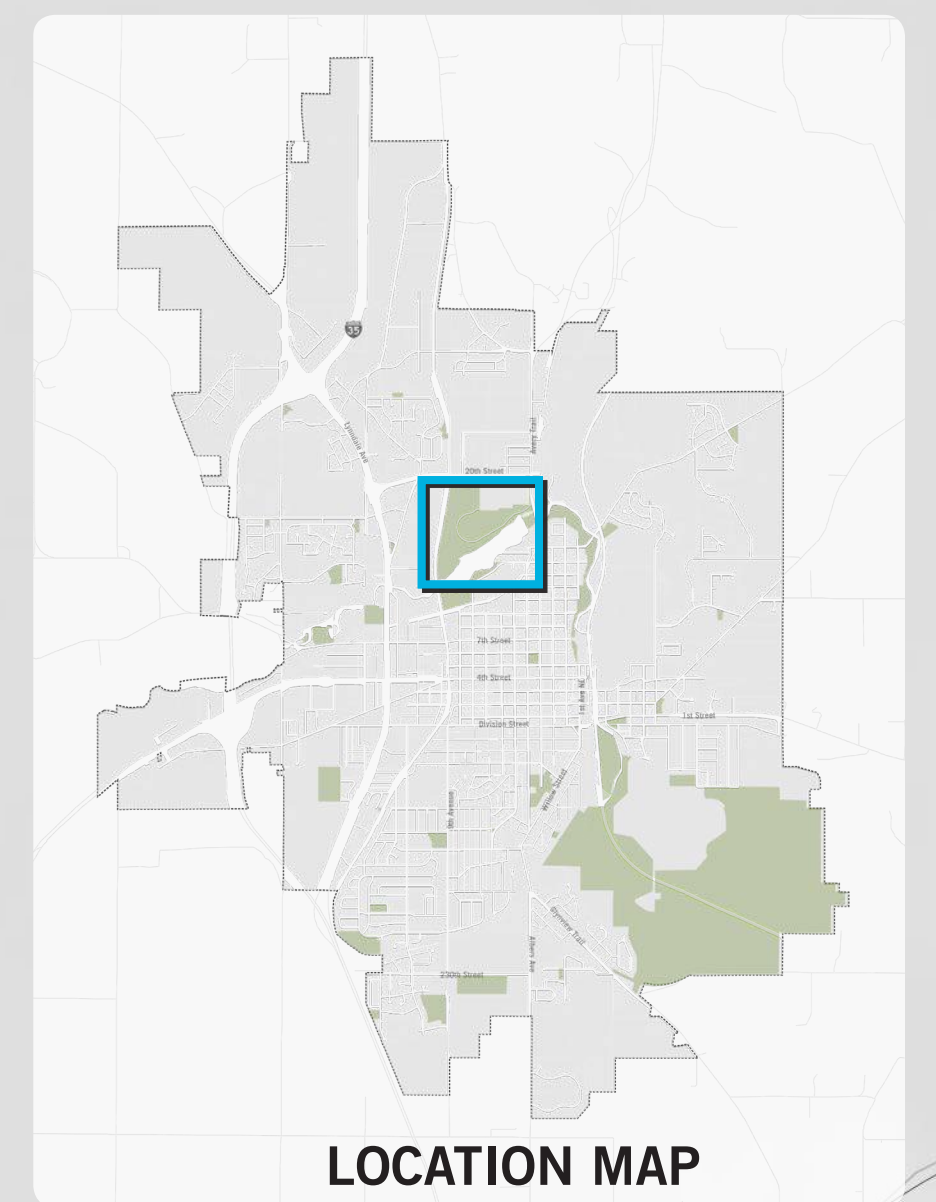
- 1 PROPOSED BASEBALL DIAMOND
- 2 EXISTING BASEBALL DIAMOND
- 3 EXISTING SOFTBALL DIAMOND
- 4 NATURALIZED RIVER EDGE
- 5 COMMUNITY CENTER WITH PARKING





## LEGEND

- 1 EXISTING PICNIC SHELTER
- 2 OVERLOOK WITH FIRE PIT
- 3 RIVER ACCESS / CANOE LAUNCH
- 4 LARGE NATURE PLAY
- 5 PLAYGROUND
- 6 EXISTING SAND VOLLEYBALL
- 7 TOT LOT
- 8 NATURALIZED RIVER EDGE
- 9 OPEN LAWN
- 10 EXISTING BASKETBALL
- 11 RENTAL FACILITY & CONCESSIONS
- 12 IMPROVED PARKING





# PRAIRIE RIDGE PARK



**LOCATION :** 2000 9th Avenue SW

**SIZE :** 13.7 acres

**CLASSIFICATION :** Community Park/Playfield

**REC CENTER :** No

**SCHOOL CONNECTIONS :** None

**CURRENT PROJECTS:** None



## CONTEXT

Prairie Ridge Park is located in the southern most region of Faribault, east of Highway 35. The Faribault Soccer Complex is just east of the site and agricultural fields border the south and southeast areas of the park. The park is located in a single family residential neighborhood.

## CURRENT CONDITIONS AND CONCERNS

Currently, this park is open, mowed area with no vegetation or programming.

## PARK FACILITY CONDITIONS (SITE VERIFIED)

● GOOD ● FAIR ● POOR

## SEASONAL AMENITIES

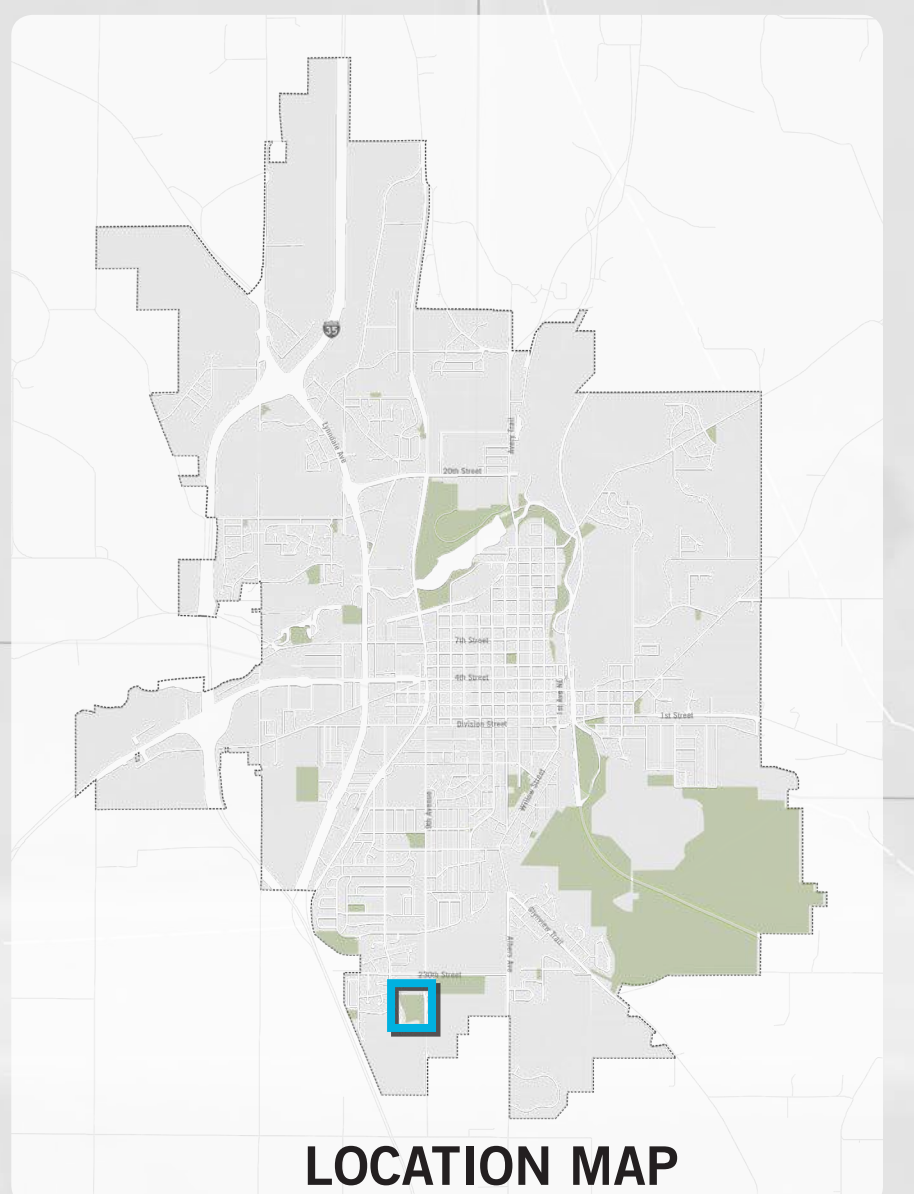
● HIGH USE ● LIMITED ● LOW USE

● SPRING ● FALL  
● SUMMER ● WINTER



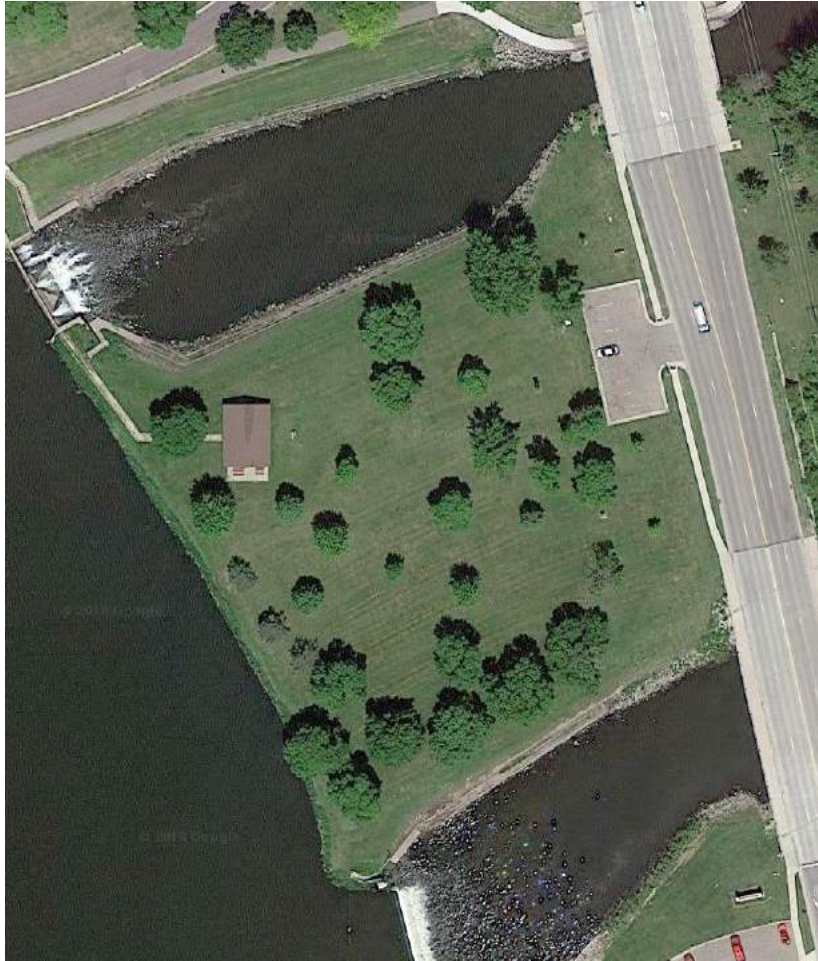
## LEGEND

- 1 PICNIC SHELTER
- 2 215' YOUTH BASEBALL FIELD RELOCATED FROM TEEPEE TONKA PARK
- 3 230' BASEBALL FIELD RELOCATED FROM TEEPEE TONKA PARK
- 4 PLAYGROUND
- 5 EXISTING STORMWATER POND
- 6 PARKING
- 7 CONCESSION BUILDING
- 8 TRAIL CONNECTION FOR NEIGHBORHOOD





# SLEVIN PARK



**LOCATION :** 1602 2nd Avenue NW

**SIZE :** 2.9 acres

**CLASSIFICATION :** Community Park/Playfield

**REC CENTER :** No

**SCHOOL CONNECTIONS :** None

**CURRENT PROJECTS:** None



## CONTEXT

This park is located on the northeast edge of the Cannon River Reservoir and is adjacent to the dam. Slevin Park also has pedestrian access to North Alexander Park and Two Rivers Park.

## CURRENT CONDITIONS AND CONCERNS

Slevin Park has well maintained open lawn space and healthy, mature trees. Access to the river can be precarious and the park does host a lot of fishing activity at the dam. The picnic shelter is well maintained but aging. The park does not meet ADA guidelines.

## PARK FACILITY CONDITIONS (SITE VERIFIED)

● GOOD ● FAIR ● POOR

● PICNIC AREAS

● PICNIC SHELTER

● TRAILS

● RIVER/PONDS

## SEASONAL AMENITIES

● HIGH USE ● LIMITED ● LOW USE

● SPRING

● FALL

● SUMMER

● WINTER



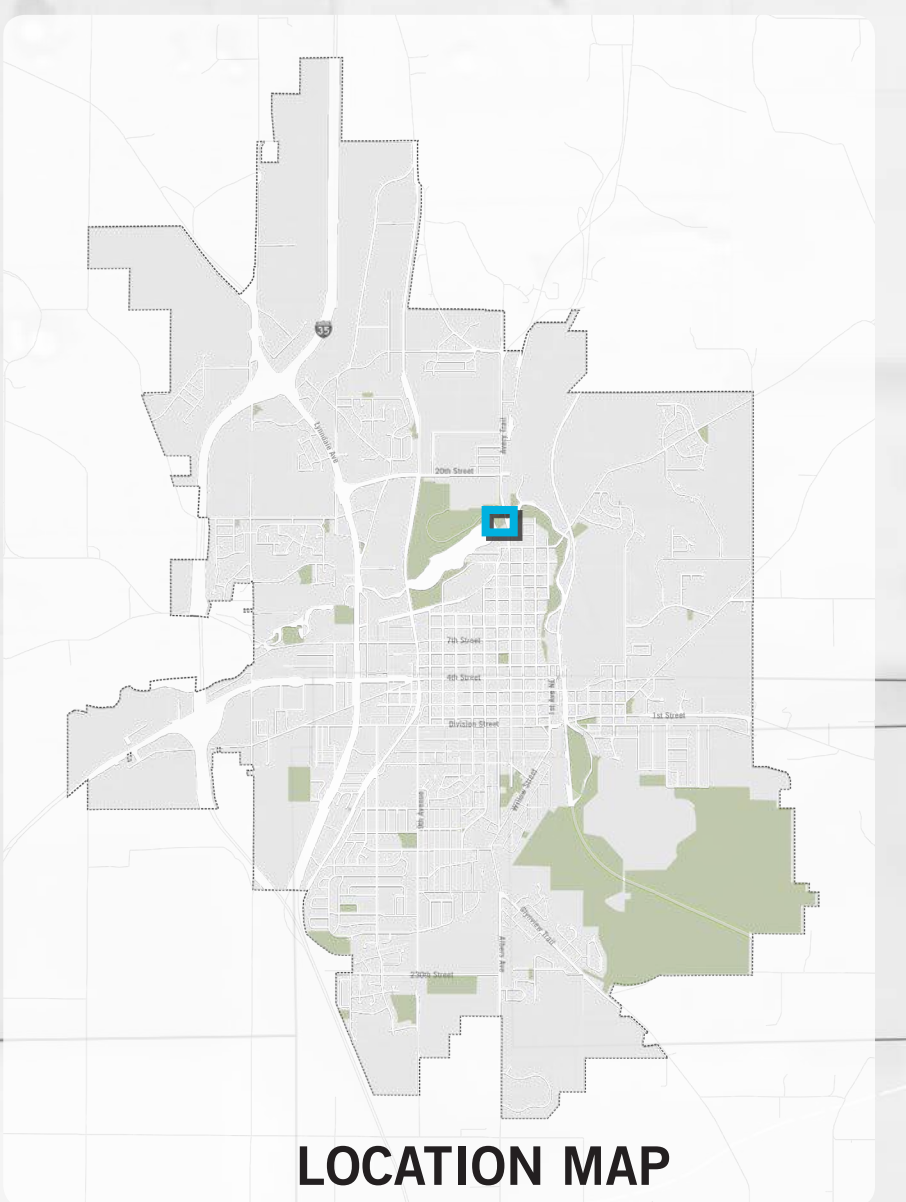
**LEGEND**

- 1 ACCESS TO RESERVOIR
- 2 NATURALIZED EDGE
- 3 OVERLOOK
- 4 EXISTING PICNIC SHELTER
- 5 PICNIC AREA WITH GRILLS
- 6 OPEN LAWN
- 7 IMPROVED CROSSING
- 8 EXPANDED CROSSING



CANNON RIVER RESERVOIR

2ND AVE NW





# SOUTH ALEXANDER PARK



**LOCATION :** 1010 7th Avenue NW



**SIZE :** 17.3 acres

**CLASSIFICATION :** Community Park/Playfield

**REC CENTER :** No

**SCHOOL CONNECTIONS :** None

**CURRENT PROJECTS:** None

## CONTEXT

South Alexander Park is on the southwest edge of the Cannon River Reservoir. To the east of the park is Jennie-O Turkey Store. Two active railroads run along the south and west sides of the park. North Alexander park is just north of the park but there is no pedestrian access.

## CURRENT CONDITIONS AND CONCERNS

The park is well maintained and has beautiful views of the Cannon River Reservoir. There are also healthy, mature trees throughout the site. The horseshoe facilities are in good condition, as is the BMX track and canoe landing. The picnic shelter is well maintained but aging. The play area does not meet ADA requirements.

## PARK FACILITY CONDITIONS (SITE VERIFIED)

● GOOD ● FAIR ● POOR

● PLAYGROUND

● PICNIC AREAS

● PICNIC SHELTER

● RESTROOM

● HORSESHOES

● BMX BIKE TRACK

● PUBLIC ACCESS

● CANOE LANDING

● RIVER/PONDS

## SEASONAL AMENITIES

● HIGH USE ● LIMITED ● LOW USE

● SPRING

● FALL

● SUMMER

● WINTER

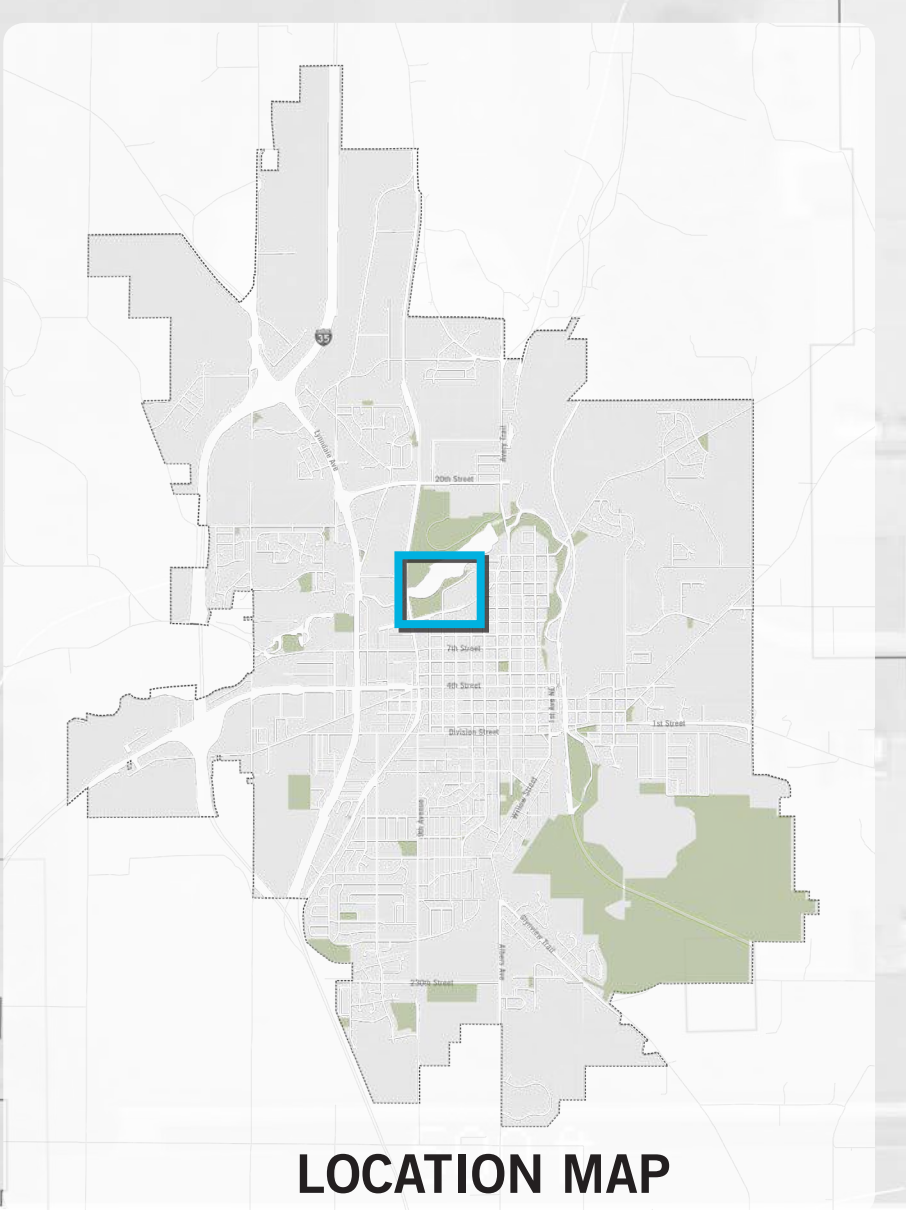


# LEGEND

- 1 PICNIC AREA
- 2 NATURALIZED EDGE
- 3 PRAIRIE
- 4 EXISTING BMX
- 5 NATURE PLAY
- 6 KAYAK/CANOE LAUNCH
- 7 PLAYGROUND
- 8 SPORTS COURT
- 9 KIDS "CYCLE TRACK"
- 10 BASKETBALL
- 11 PICKLEBALL
- 12 ENHANCED BUILDING
- 13 EXISTING SHELTER
- 14 RIVER ACCESS
- 15 FISHING PIER
- 16 CANOE / KAYAK LAUNCH
- 17 PERGOLA
- 18 BONFIRE PITS

CANNON RIVER  
RESERVOIR

7TH AVE NW



## SOUTH ALEXANDER PARK MASTER PLAN



# TEEPEE TONKA PARK



**LOCATION :** 10 3rd Avenue NE

**SIZE :** 25.3 acres

**CLASSIFICATION :** Community Park/Playfield

**REC CENTER :** No

**SCHOOL CONNECTIONS :** None

**CURRENT PROJECTS:** None



## CONTEXT

This sports-focused park facility is located a quarter mile from downtown Faribault along the Straight River. It is directly adjacent to the River Bend Nature Center and connected to the nature center's trail system. The elevated railroad adjacent to the western edge of the park, the river lying to the east and south, and the low topography makes this park disconnected from the surrounding city and residential communities. The surrounding natural features, including the river and nature center, offer unique opportunities in the parks for park programming.

## CURRENT CONDITIONS AND CONCERNS

The park is generally in good condition with well maintained fields and diamonds.

The park is located within the floodplain and has been seriously flooded during the spring over the past 5 years. After each flood period, the park features need to be rebuilt and needs considerable resources to maintain.

There is significant erosion along the banks of the Straight River. This creates a safety hazard at several highly trafficked locations and limits the planned access to the river.

## PARK FACILITY CONDITIONS (SITE VERIFIED)

● GOOD ● FAIR ● POOR

● PICNIC AREAS

● PICNIC SHELTER

● RESTROOM

● SOCCER/RUGBY FIELD

● NATURE AREAS

● CANOE LANDING

● RIVER/PONDS

● ARCHERY RANGE

● BASEBALL/SOFTBALL FIELDS

## SEASONAL AMENITIES

● HIGH USE ● LIMITED ● LOW USE

● SPRING

● FALL

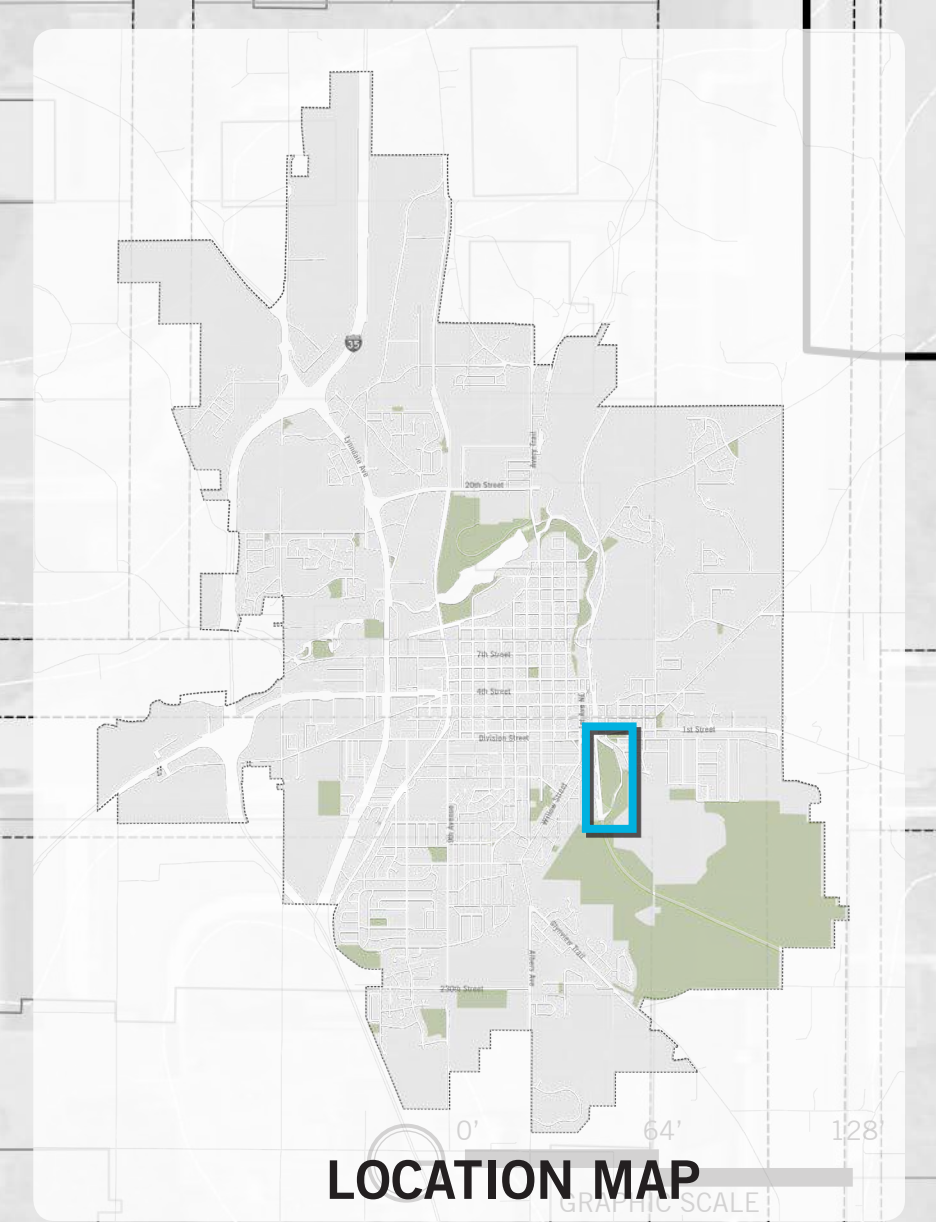
● SUMMER

● WINTER



**LEGEND**

- 1 OPEN LAWN/FLEX FIELD
- 2 STAGE WITH PERFORMANCE PLAZA
- 3 NATURE PLAY
- 4 EXPANDED PARKING
- 5 TRAIL CONNECTION TO DOWNTOWN
- 6 TRAIL CONNECTION TO RIVER BEND NATURE CENTER
- 7 BOARDWALK
- 8 STORMWATER
- 9 TREE HOUSE/OVERLOOK
- 10 RIVER ACCESS
- 11 BEE LAWN
- 12 NATURALIZED RIVER EDGE
- 13 EXISTING ARCHERY
- 14 DISC GOLF





# TWO RIVERS PARK



**LOCATION :** 1815 2nd Avenue NW

**SIZE :** 23.4 acres

**CLASSIFICATION :** Community Park/Playfield

**REC CENTER :** No

**SCHOOL CONNECTIONS :** None

**CURRENT PROJECTS:** None



## CONTEXT

This nature-based park has pedestrian connections to North Alexander Park and Slevin Park. It is uniquely located at the junction of the Cannon River and Straight River and has beautiful views of both rivers and surrounding wildlife. Two Rivers Park also has connections to the Sakatah Singing Hills State Trail and Straight River State Trail.

## CURRENT CONDITIONS AND CONCERNS

Two Rivers Park is generally in good condition and well maintained. The picnic shelter is in good condition but needs improvements to the concrete pad and picnic tables under it. Generally the trails are in good shape. The fishing platform is well maintained but aging.

## PARK FACILITY CONDITIONS (SITE VERIFIED)

● GOOD ● FAIR ● POOR

● PICNIC AREAS

● PICNIC SHELTER

● TRAILS

● FISHING PIER

● CANOE LANDING

● RIVER/PONDS

## SEASONAL AMENITIES

● HIGH USE ● LIMITED ● LOW USE

● SPRING

● FALL

● SUMMER

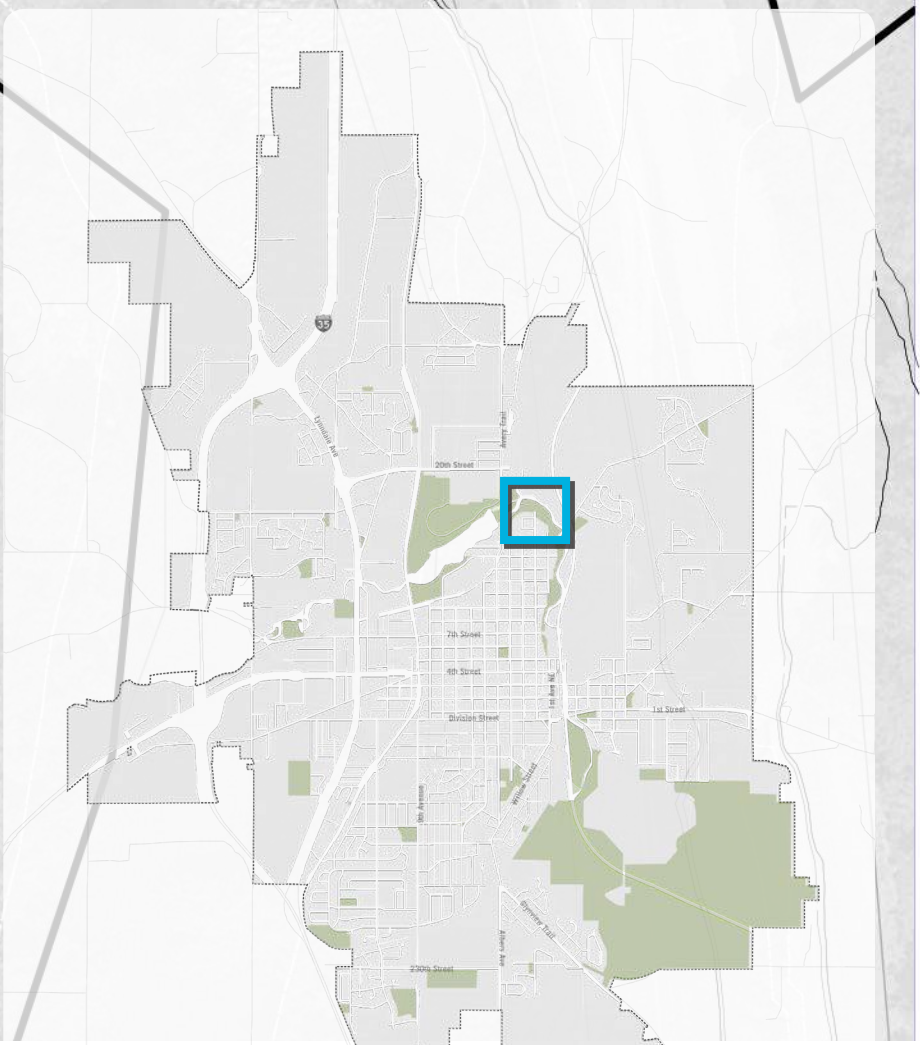
● WINTER





**LEGEND**

- 1 EXPANDED PARKING
- 2 RESTROOM BUILDING
- 3 TRAILHEAD WITH AMENITIES
- 4 EXISTING PICNIC SHELTER
- 5 RIVER ACCESS/CANOE LAUNCH
- 6 OVERLOOK WITH SEATING
- 7 PRIVACY FENCE/SCREENING
- 8 EXISTING FISHING PLATFORM
- 9 NORTH TRAIL CONNECTION



LOCATION MAP



# WAPACUTA PARK



**LOCATION :** 705 3rd Avenue SW

**SIZE :** 8.5 acres

**CLASSIFICATION :** Community Park/Playfield

**REC CENTER :** No

**SCHOOL CONNECTIONS :** None

**CURRENT PROJECTS:** None



## CONTEXT

Wapacuta park is located about a half mile southwest of Downtown Faribault and is adjacent to Garfield Park. The park is surrounded by single-family and multifamily housing. It is also within walking distance of Bethlehem Academy and Divine Mercy Catholic School.

## CURRENT CONDITIONS AND CONCERNS

While the park is well maintained, it has aging facilities. The large, mature trees appear to be healthy.

## PARK FACILITY CONDITIONS (SITE VERIFIED)

● GOOD ● FAIR ● POOR

● PLAYGROUND

● PICNIC AREAS

● PICNIC SHELTER

● RESTROOM

● BASKETBALL COURTS

● TRAILS

● DISC GOLF

## SEASONAL AMENITIES

● HIGH USE ● LIMITED ● LOW USE

● SPRING

● FALL

● SUMMER

● WINTER



## LEGEND

- 1 PLAYGROUND
- 2 SPORTS COURT
- 3 PLAY HILL
- 4 PARKING
- 5 EXISTING PARKING
- 6 EXISTING BACK STOP
- 7 RAMP AND STAIRS
- 8 WARMING HOUSE WITH FIRE PIT
- 9 PICNIC SHELTER
- 10 EXISTING PICNIC SHELTER
- 11 SHELTER WITH RESTROOM & CONCESSIONS
- 12 TEENAGE HANGOUT
- 13 TREE CANOPY WALK
- 14 TREE HOUSE
- 15 STORMWATER
- 16 BEE LAWN
- 17 DEMONSTRATION GARDENS
- 18 DISC GOLF
- 19 PICKLEBALL
- 20 EXISTING MEMORIAL
- 21 OPEN LAWN WITH SKATING LOOP

3RD AVE SW

TOWER PL

WILLOW ST

LIND ST

LOCATION MAP

0' 64' 128'  
GRAPHIC SCALE



# WAPACUTA & GARFIELD PARK MASTER PLANS

PERKINS+WILL TEAM  
01-10-2019