

CITY OF FARIBAUT:
JOURNEY TO
2040



"Shaping our Future"

PARKS, TRAILS, & OPEN SPACE STEERING COMMITTEE: MEETING #2

INTEGRATING VISION 2040

OCTOBER 4, 2018

AGENDA

Parks, Trails, & Open Space Steering Committee: Meeting #2

6:00	Review Previous Engagement Efforts
6:10	Overview of Parks System Plan Updates
6:25	Review Downtown Design Concepts Related to the Parks Plan
6:40	Review Preliminary Design Principles
6:50	Park Programming Prioritization Activity
7:55	Next Steps
8:00	Adjourn

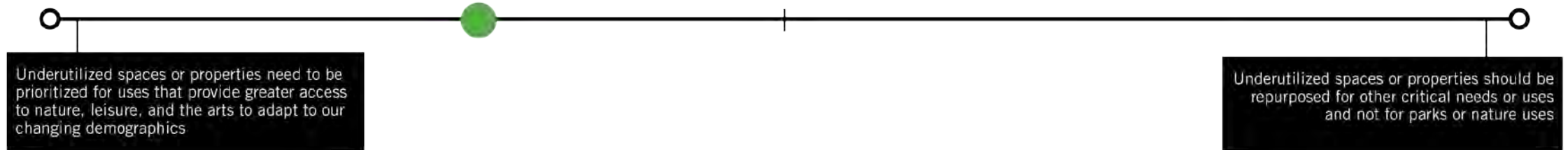
Meeting #1 Goals

- ✓ *Review Engagement Efforts*
- ✓ *Review Guiding Design Principles for Parks Master Plans*
- ✓ *Develop Park Programming Prioritization*

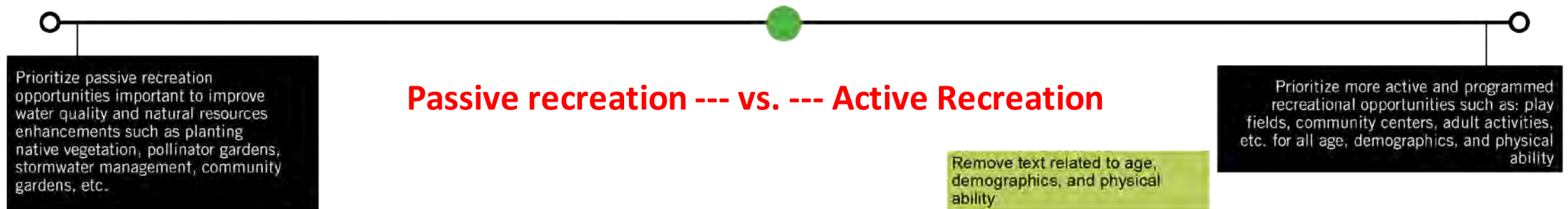
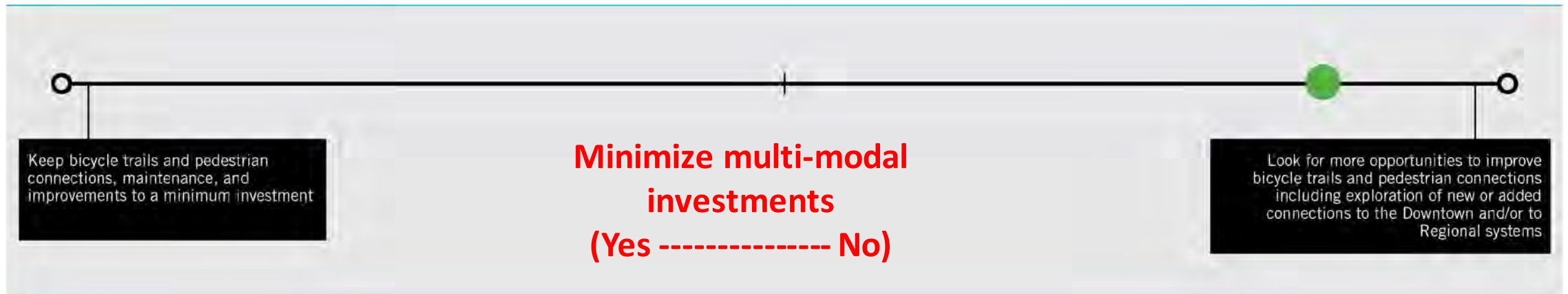
A group of people are gathered in a meeting room, reviewing large maps and documents. The room has a brick wall on the left and a large window in the background. Several people are standing and looking at the documents, while others are sitting at tables. The text "REVIEW PREVIOUS ENGAGEMENT EFFORTS" is overlaid in large, light blue capital letters on the right side of the image.

REVIEW PREVIOUS ENGAGEMENT EFFORTS

Parks, Trails, & Open Space Steering Committee Continuum Statements

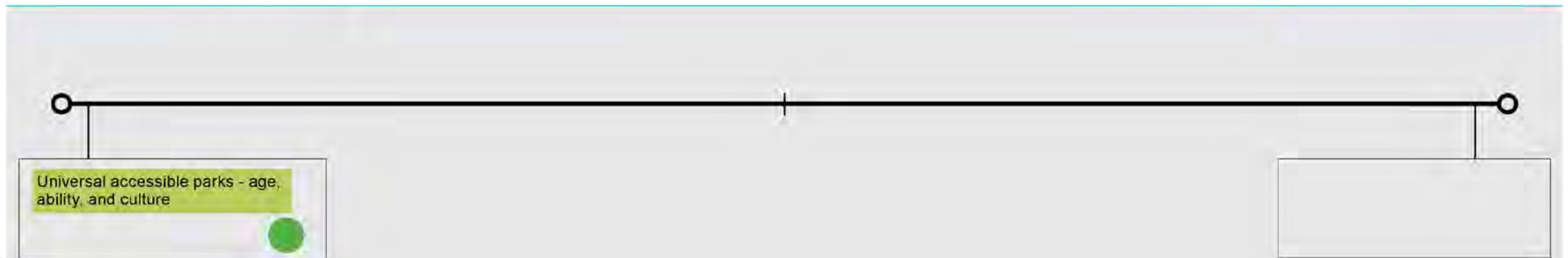
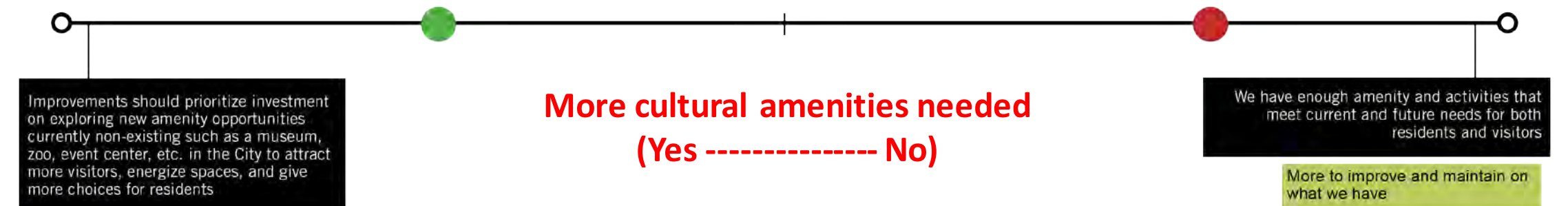
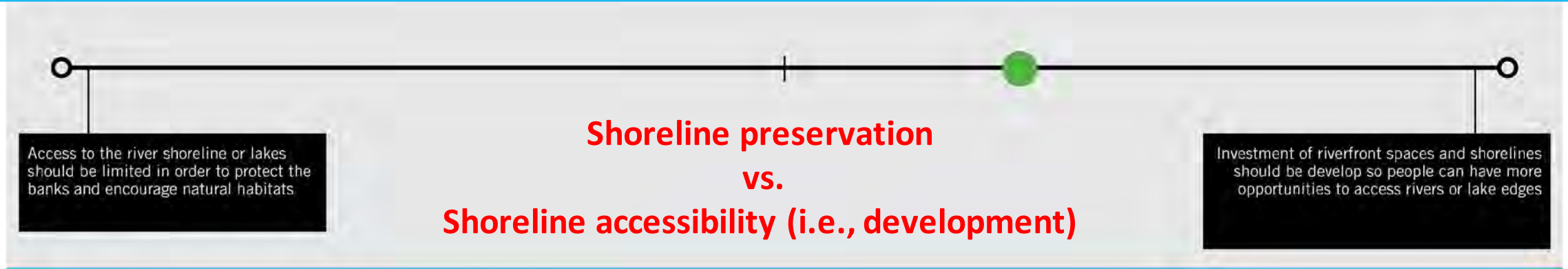


Green space development --- vs. --- All other development types

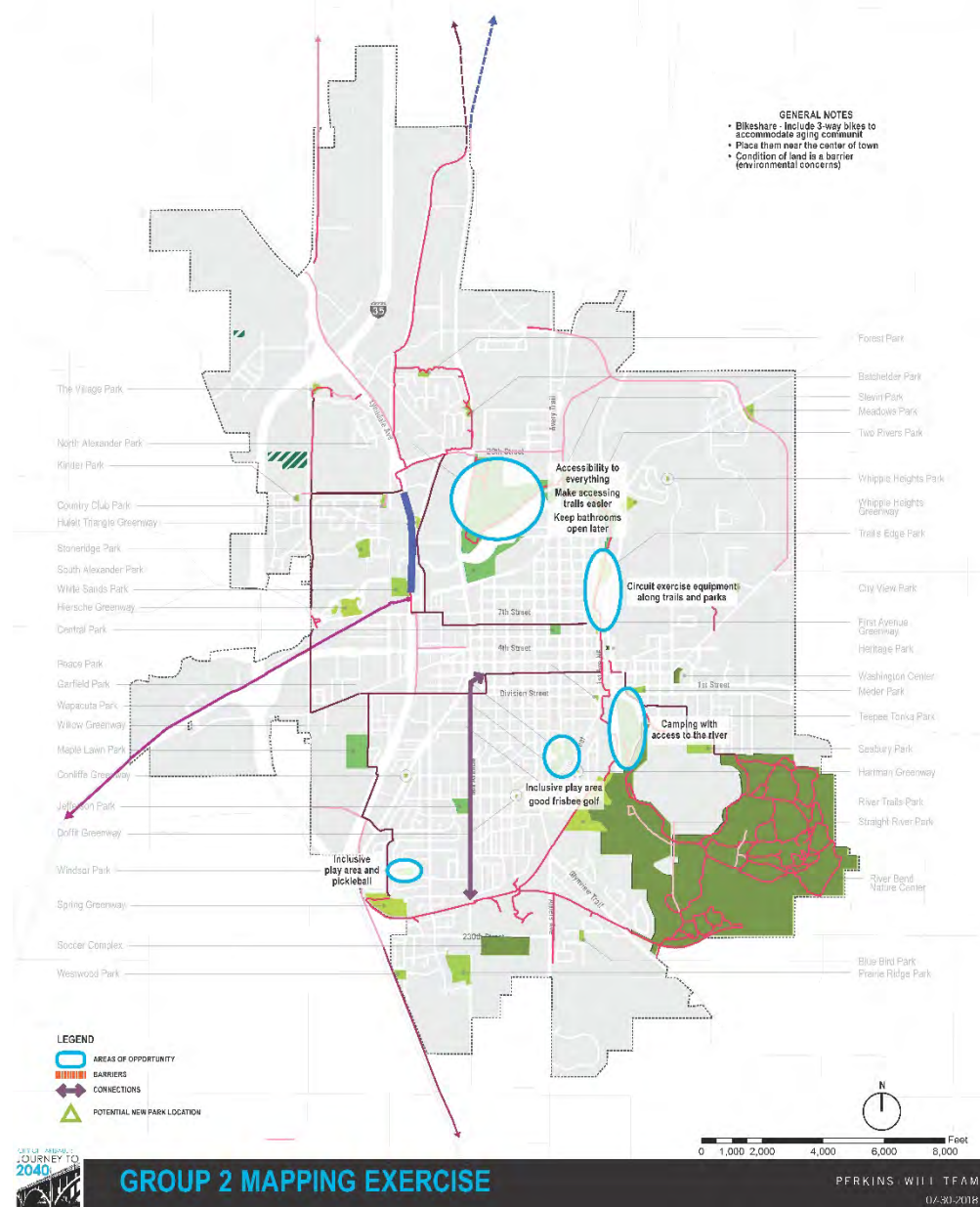
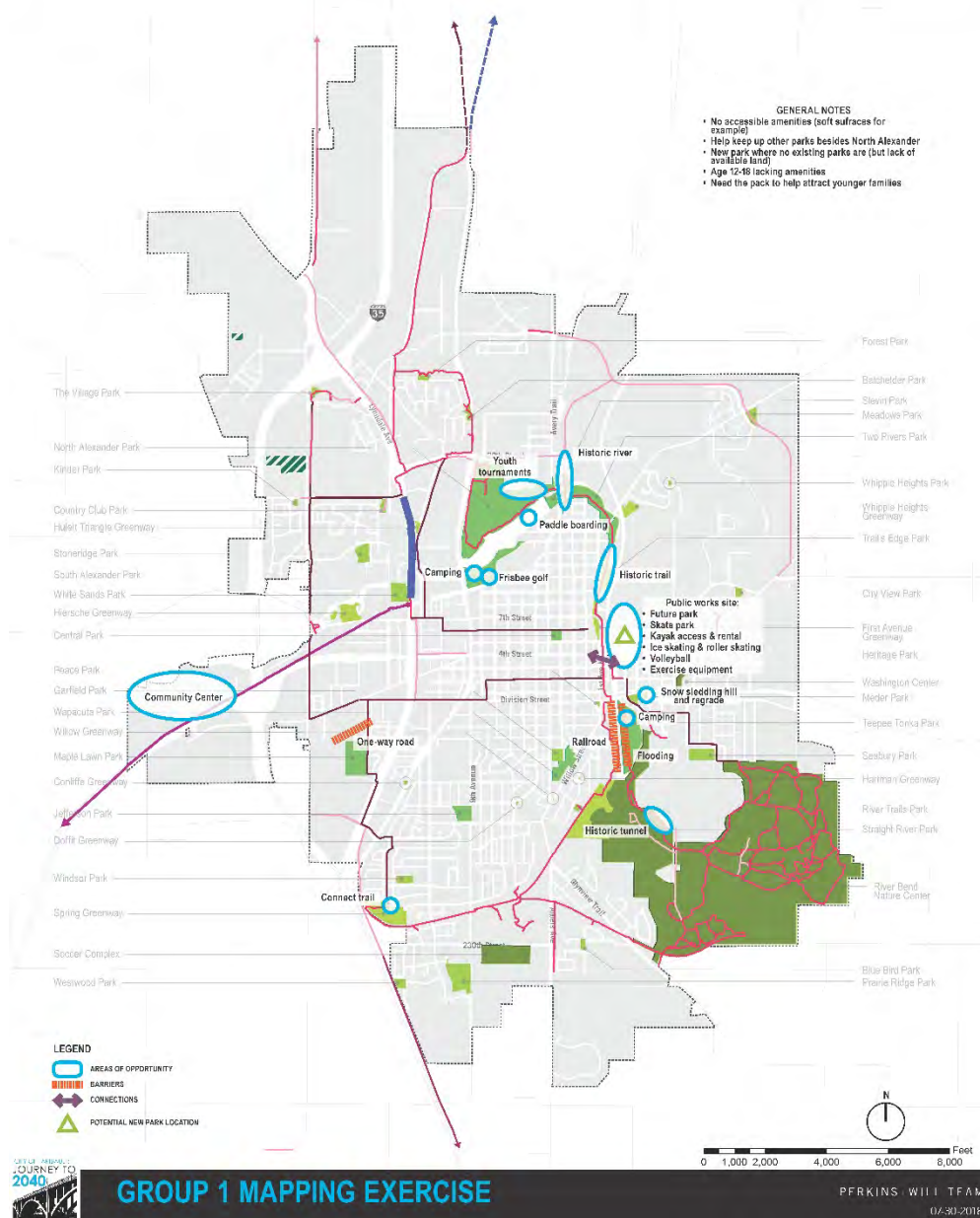


Passive recreation --- vs. --- Active Recreation

Parks, Trails, & Open Space Steering Committee Continuum Statements



Exercise #1: Mapping



Exercise #2: "SWOT"

STRENGTHS:

1. Diversity of parks
2. **Abundance of neighborhood parks (2)**
3. **Multi-functionality of North Alexander Park (2)**
4. Soccer complex
5. Trails are almost connected
6. **High community demand (2)**
7. Dog park
8. Trail links to the center of town
9. Well maintained
10. Water
11. BMX track
12. **State trail (3)**
13. **River Bend Nature Center (5)**
14. Lots of youth living in Faribault

Exercise #2: "SWOT"

WEAKNESSES:

1. Geese
2. Accessibility within parks (1)
3. Accessibility to parks
4. Not bike friendly (1)
5. Trails are almost connected
- 6. Lack of diversity of play equipment (2)**
7. Safety within various parks
8. Budget (1)
9. Railroad (1)
10. No connections from downtown to greenspace
11. Quality and quantity of parking lots
- 12. Lack of modern amenities (2)**
- 13. Age appropriate activities (2)**
14. Marketing of our assets (1)
15. No camping
16. Greenways are isolated
17. Lack of water activities (1)
- 18. Not addressing all cultural needs (2)**

Exercise #2: "SWOT"

OPPORTUNITIES:

1. Safety call boxes
2. Lots of greenspace and unique features (2)
3. Splash pad (1)
4. Bikeshare
5. Economic impact – destination for parks (4)
6. Lake Faribault
7. Potential population growth (1)
8. Trails are almost connected (2)
9. Regional camping destination
10. Public/private partnerships (2)
11. Leverage assets (2)
12. Beautify

Exercise #2: "SWOT"

THREATS:

1. Complacency (4)

- 2. Flooding (1)
- 3. Population changes (1)
- 4. Investing too much in one amenity

5. Budget (4)

- 6. Width of right-of-way and current infrastructure (1)
- 7. Over commitment
- 8. Under utilization (3)

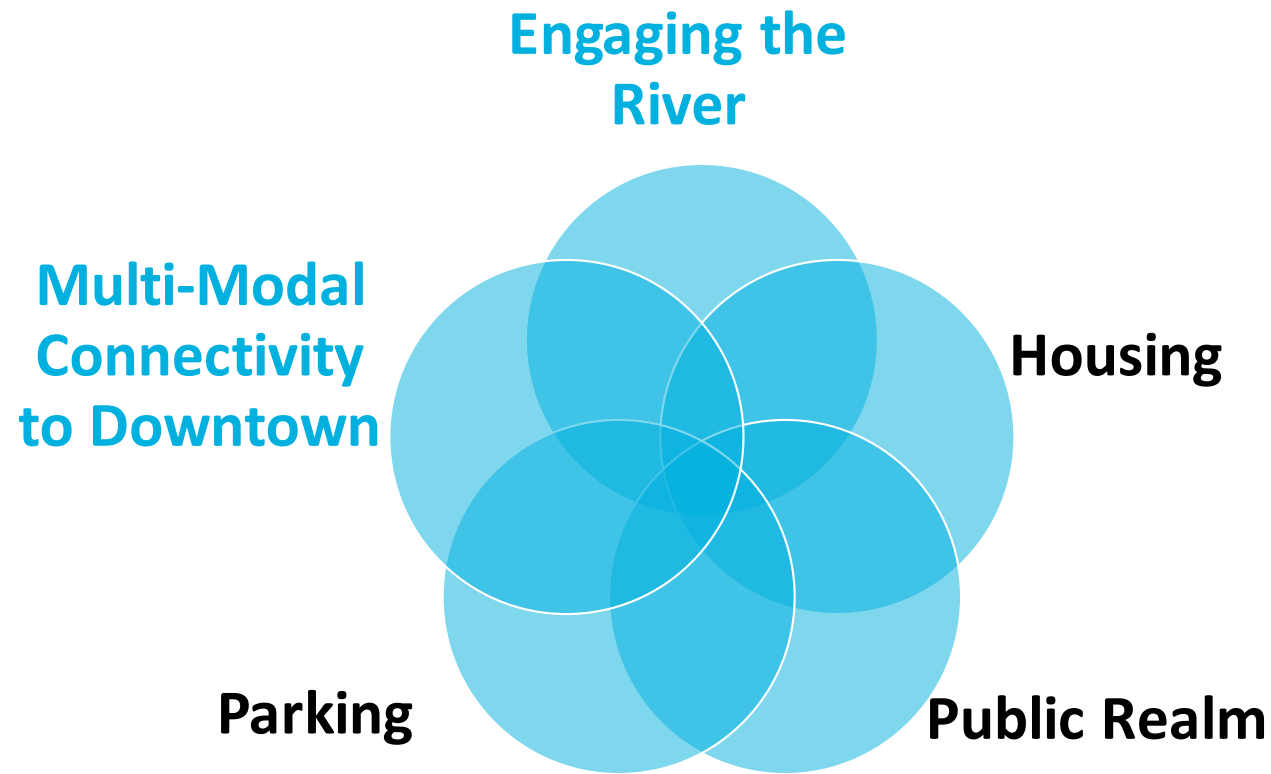
Downtown Design Charrette – August 15 & August 16



- What is a "Charrette"?
 - Collaborative meeting to sketch designs & explore ideas
 - Goal is to become inspired & make better design decisions

Charrette Themes

- *Five major themes emerged from the activities:*



Online Engagement

Faribault MN
August 29 at 9:48 AM

What is your favorite park OUTSIDE of Faribault and why?

6 Likes 26 Comments 1 Share

Like Comment Share

Barbara Lonien Munsinger Garden in St Cloud. Lovely flowers and walking paths along the Mississippi River.
2 Likes · Reply · 4w

Tom Hickey About 15 minutes from my house
1 Like · Reply · 4w

Barbara Lonien Tom Hickey My sister stays in St Cloud every summer with her husband. Dan & Kathy Coplan. They both lived there for years. Their main residence is Leesburg FL now. She stays with me off and on too.
1 Like · Reply · 4w

Write a reply...

Amber Holven Every park in Ames, Ia. They are so beautifully maintained and the equipment is very well msintained. If you look at the city of Ames web site you can see some photos i believe. We lived there for 3 years when our kids were little and we LOVED visiting the parks there! For a collage town they have an awesome family atmosphere!
Like · Reply · 4w

Carolyn Wiggins Treadway Faribault needs a splash pad. It could be elaborate like the one in Woodbury or less so like the one in Apple Valley. https://www.woodburymn.gov/healtheast.../splash_pad.php

WOODBURYMN.GOV
Splash Pad
7 Likes · Reply · Remove Preview · 4w

Andrea Vogelsberg Such an inexpensive addition to our community to draw others here. I will never understand why things like this aren't a priority for our council.
1 Like · Reply · 4w

Andrea Vogelsberg Such an inexpensive addition to our community to draw others here. I will never understand why things like this aren't a priority for our council.
1 Like · Reply · 4w

Kristy Ann - Friends with Kevin F. Voracek and 6 others
Kurt Wolf get Morristown council on board with this!! This would be a great addition to town.
Like · Reply · 3w

Write a reply...

Brenda Boone We love Sibley Park in Mankato for the great playground with something for everyone of any size to play on, including adults! And the animals there of course! If you are looking for ideas to 'plus' our parks, I wish our schools or just one of our parks had the adjustable height basketball ball hoops because when you aren't tall yet but you really want to play, regular hoops are just too out of reach!
2 Likes · Reply · 4w

Natalie Ginter Secraw After the parking lot at Roosevelt was resurfaced this summer they put the old hoops back up. That would've been a perfect time to upgrade/update the hoops.
Like · Reply · 3w

Brenda Boone Natalie Secraw, I agree, but I actually just saw those adjustable hoops for the first time this summer while on a trip and I snapped a photo so I wouldn't forget. I thought it was brilliant and wished I would have seen them long time ago! I am active... See More
Like · Reply · 3w

Write a reply...

Eric Merrill This will be a long list. Go to Samantha Markman 's page, Revilitaze the Riverfront Faribault to see my list
2 Likes · Reply · 4w

Carolyn Wiggins Treadway Is a kayak park the only suggestion on that page? I don't see others. I like that idea yet think there are other appealing ideas as well. Under the viaduct especially needs attention!
Like · Reply · 3w

Eric Merrill Theres plenty of ideas. Ibe posted many ober the year
Like · Reply · 3w

Carolyn Wiggins Treadway Eric Merrill could you list some of them here? I don't think the powers that be are going to go through that site to find them.
Like · Reply · 3w

Eric Merrill Carolyn Wiggins Treadway I will when available
1 Like · Reply · 3w

Write a reply...

Stephanie Kennedy Raynor There are so many beautiful parks here in Minnesota. Haven't had the chance to visit all...but I do love the Big Woods in Nerstrand! Love to hike! I must check out more soon! Large park with picnic area, camping and lots of trails. Beautiful waterfall. Must see this fall!!
2 Likes · Reply · 4w · Edited

Carol M Musel Loveland colorado
Like · Reply · 4w

Carol M Musel They have bronsed many great memories of kids
Like · Reply · 4w

Leah PI I don't have a specific one in mind, but we love parks with swingsets. We also really like parks that have things for a variety of ages. It is really hard to find parks for small kids (like little slides, safe stairs, etc). Our kids do enjoy climbing and playing but sometimes have a hard time on "big kid" playgrounds. One and two year olds love to get outside too.
Like · Reply · 4w

Melissa Kuhl Love Windsor Park (in town) for toddlers....unless they eat rocks....because some genius made a fantastic baby/toddler park and then put tiny peddles as the ground cover. 🐼
1 Like · Reply · 3w

Leah PI where is that? I need a park map!
Like · Reply · 3w

View more replies

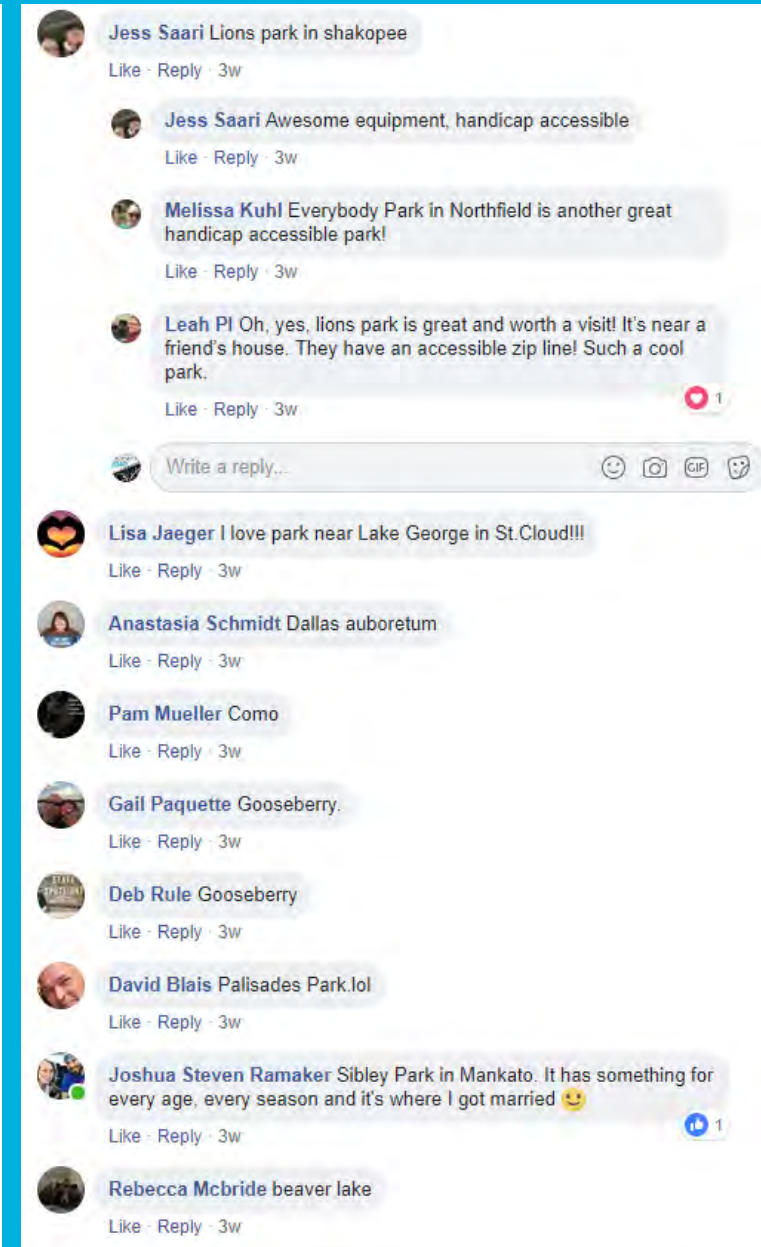
Write a reply...

Carolyn Wiggins Treadway I think that the area under the viaduct should be beautified with park benches, picnic table and simple walking paths. It is an eyesore and makes a bad impression of what should be an asset. I know that it is in danger of occasional flooding but making it look nicer wouldn't have to be a costly endeavor.
1 Like · Reply · 3w

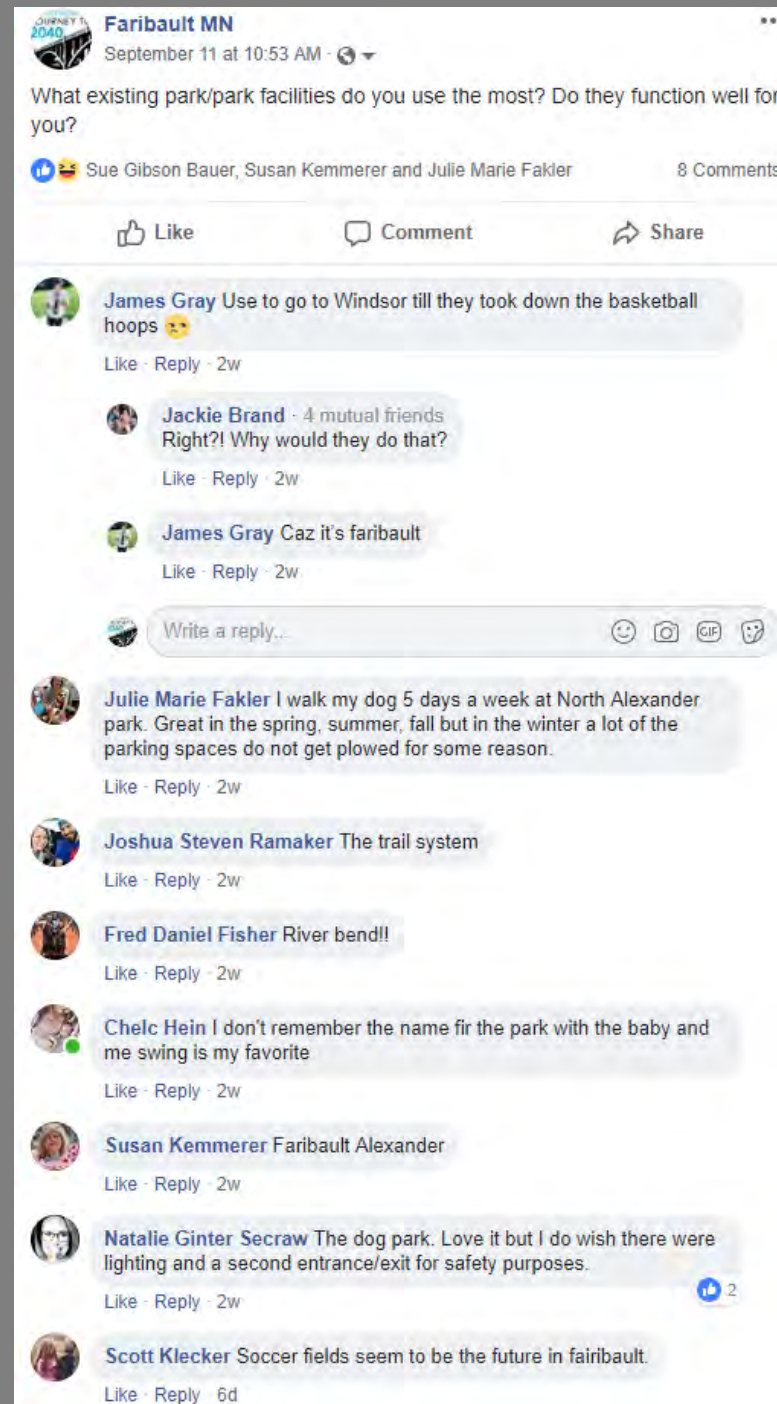
Online Engagement

Takeaways:

- Splash Pad (Woodbury, Apple Valley)
- Large, Inclusive, Multi-Generation Playgrounds (Ames, Mankato, Shakopee, Northfield)
- Basketball with Adjustable Nets (no specific location)
- Hiking/Walking Trails (St. Cloud, CO, Gooseberry)
- Way Park in Northfield (Friends of Way Park Partnership)



Online Engagement



Takeaways:

- Windsor Park
- North Alexander
 - Trails
- River Bend
- Dog Park
- Soccer

Online Engagement


Faribault MN September 26 at 12:40 PM

What park activities would you like to see be added to the park system? Which park(s) would you put them in?

Laurie Kolstad, John A Haessig and 5 others · 20 Comments · 2 Shares

Like · Comment · Share

Matt Leister Trails edge park and the straight river park are pretty much unused parks that have the bike trail running through it. These parks could be developed to give more access options to the straight river. This could facilitate tubing through the city if th... See More

 **Trail's Edge Park**

Like · Reply · Remove Preview · 4d · 3

Melissa Kuhl Splash pad! 6

Like · Reply · 4d

Kari Casper A sensory park. 4

Like · Reply · 4d

Amber Nichole Montag It would be nice if there were acutal hoops on the basketball poles at Windsor park.

Like · Reply · 4d

Sarah Lenertz Clark At the elementary schools it would be great to have a couple infant swings for families who live nearby with younger and older children. * I also recently saw a really cool item in German Park in New Ulm. It was a couple swings that were on a sliding c... See More

Like · Reply · 4d · 1

Brenda Boone I would love to see us offer something unique, that other cities do not have. A reading park/outdoor coffee shop park would be cool! With a variety of seating options that are comfier than typical park furniture for kids and adults, intentional spa... See More

Like · Reply · 4d · 2

Brenda Boone Or a permanent Tilt-A-Whirl in Central Park! 3

Like · Reply · 4d · Edited

Amanda Jensen I'm highly in favor of this. 1

Like · Reply · 4d

Brenda Boone Amanda Jensen Wouldn't it be so cool and so aligned with Faribault?!

Like · Reply · 4d

Brenda Boone I would ride it daily. 4

Like · Reply · 4d

Amanda Jensen Some towns have carousels. Faribo has a tilt-a-whirl. Best thing ever. 1

Like · Reply · 4d

Amanda Jensen Me too!

Like · Reply · 4d · Edited

Jim Hermel That could change Faribault. Nite life. Shopping. Resturants. Art. Museum s. All downtown Faribault. Lots and lots of lights. With a tilt a whirl located in the middle of downtown faribault

Like · Reply · 3d

Write a reply...

Ilene Leister How about adding a system of hiking trails that connect every park and go thru the downtown? With maps.....and make sure there are food and drink venues along the way so there are destinations. 5

Like · Reply · 4d

Brenda Boone And a playground long zip line! There's a great one in Lakeville, I believe, at their Rotary Park! 3

Like · Reply · 4d

Leah Pi Shakopee has one at their Lions Park. So fun! That park is awesome.

Like · Reply · 4d

Write a reply...

Sabrina Henry It would be nice to have another disk golf course in town! 4

Like · Reply · 4d

Peter van Sluis In Alexander Park, on Canon River Reservoir, a structure with snacks and drinks, in the summer renting out paddleboats, and in the winter manage ice rinks. 4

Like · Reply · 4d

Jackie Brand · Friends with Angie Krohn and 3 others
Splash pad!!! I think it would be great to have it at any of the city parks, as long as it's not a part of the pool. And I second the basketball hoops at Windsor Park!

Like · Reply · 4d

Jackie Brand · Friends with Laura O'Connor and 3 others
Oh, and definitely porta potties at all of the parks!! This is the first city I've ever lived in that doesn't have this. 2

Like · Reply · 4d

Melissa Kuhl Yes! Why is Windsor Park geared towards toddlers/preschoolers, but has no potty?! 3

Like · Reply · 4d

Write a reply...


Laura O'Connor Treehouses. Everywhere! 2

Like · Reply · 4d

Peter van Sluis Laura O'Connor with jungle Jim ropes and zip lines in the trees to connect them 2

Like · Reply · 4d

Laura O'Connor



Like · Reply · 4d

Write a reply...

Hannah Davidson We desperately need an indoor park for the winter months. 7

Like · Reply · 4d

Matt Leister Hannah Davidson love this idea! I never thought of this. 1

Like · Reply · 1d

Online Engagement

Takeaways:

- Basketball hoops at Windsor
 - Splash pads
- Unique/fun activities (outdoor coffee shops, zip line, tree houses, etc.)
 - Indoor playground
 - Water activities (trails, paddleboats, etc.)
 - Food and drink

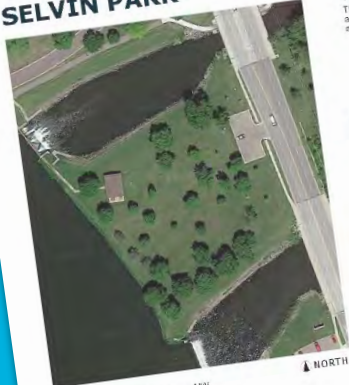




OVERVIEW OF PARK SYSTEM PLAN UPDATES

Updated Park Profiles

SELVIN PARK



CONTEXT

This park is located on the northeast edge of the Cannon River Reservoir and is adjacent to the dam. Selvin Park also has pedestrian access to North Alexander Park and Two Rivers Park.

CURRENT CONDITIONS AND CONCERNS

Selvin Park has well maintained open lawn space and healthy mature trees. Access to the river can be precarious and the park does host a lot of fishing activity in the dam. The picnic shelter is well maintained but aging. The park does not meet ADA guidelines.

PARK FACILITY CONDITIONS (SITE VERIFIED)

● GOOD ● FAIR ● POOR

- PICNIC AREAS
- PICNIC SHELTER
- TRAILS
- RIVER/PONDS

SEASONAL AMENITIES

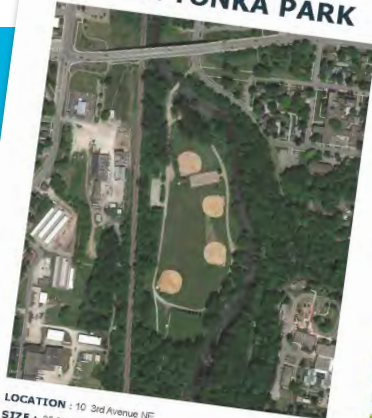
● HIGH USE ● LIMITED ● LOW USE

● SPRING ● FALL

● SUMMER ● WINTER

LOCATION : 1802 2nd Avenue NW
SIZE : 2.9 acres
CLASSIFICATION : Community Park/Playfield
REC CENTER : No
SCHOOL CONNECTIONS : None
CURRENT PROJECTS : None

TEEPEE TONKA PARK



CONTEXT

This sports focused park facility is located a quarter mile from downtown Faribault along the Straight River. It is directly adjacent to the River Bend Nature Center and connected to the park, the river lying to the east and south, and the low topography makes this park disconnected from the surrounding city and residential communities. The surrounding natural features, including the river and nature center, offer unique opportunities in the parks for park programming.

CURRENT CONDITIONS AND CONCERNS

The park is generally in good condition with well maintained fields and diamonds. The park is located within the floodplain and has been seriously flooded during the spring over the past 5 years. After each flood period, the park features need to be rebuilt and needs considerable resources to maintain.

There is significant erosion along the banks of the Straight River. This creates a safety hazard at several highly trafficked locations and limits the planned access to the river.

PARK FACILITY CONDITIONS (SITE VERIFIED)

● GOOD ● FAIR ● POOR

- PICNIC AREAS
- PICNIC SHELTER
- RESTROOM
- SOCCER/RUGBY FIELD
- NATURE AREAS
- CANOE LANDING
- RIVER/PONDS
- ARCHERY RANGE

SEASONAL AMENITIES

● HIGH USE ● LIMITED ● LOW USE

● SPRING ● FALL

● SUMMER ● WINTER

LOCATION : 10 3rd Avenue NE
SIZE : 25.3 acres
CLASSIFICATION : Community Park/Playfield
REC CENTER : No
SCHOOL CONNECTIONS : None
CURRENT PROJECTS : None

PRAIRIE RIDGE PARK



CONTEXT

Prairie Ridge Park is located in the southern most region of Faribault, east of highway 35. The Faribault Soccer Complex is just east of the site and agricultural fields border the south and southeast areas of the park. The park is located in a single family residential neighborhood.

CURRENT CONDITIONS AND CONCERNS

Currently, this park is open, mowed area with no vegetation or programming.

PARK FACILITY CONDITIONS (SITE VERIFIED)

● GOOD ● FAIR ● POOR

SEASONAL AMENITIES

● HIGH USE ● LIMITED ● LOW USE

● SPRING ● FALL

● SUMMER ● WINTER

LOCATION : 2000 6th Avenue SW
SIZE : 15.7 acres
CLASSIFICATION : Community Park/Playfield
REC CENTER : No
SCHOOL CONNECTIONS : None

NORTH ALEXANDER PARK



CONTEXT

North Alexander Park is a premier, destination athletic park in Faribault. Located north of the Cannon River Reservoir, the park is adjacent to and has views of the historic Faribault Wooden Mill. The Faribault Family Aquatic Center and Rice County Fairground border the north side of the park as well. This park hosts many of the City's athletic tournaments. It also has the largest play area in Faribault.

CURRENT CONDITIONS AND CONCERNS

This park is well maintained and is generally in good condition. The fencing and ball fields are in good condition and operate well for the community. The play area is also in good condition and has two age separated play equipment. They share a container. The buildings are also well maintained and heavily used. Some picnic shelters are aging and should be replaced or renovated. Many areas of the park, including the play containers, swings, and picnic areas do not meet ADA guidelines.

PARK FACILITY CONDITIONS (SITE VERIFIED)

● GOOD ● FAIR ● POOR

- PLAYGROUND
- PICNIC AREAS
- PICNIC SHELTER
- RESTROOM
- AQUATIC CENTER
- SAND VOLLEYBALL
- FOOTBALL FIELDS
- BASEBALL FIELD
- SOFTBALL FIELD
- HOCKEY ARENA
- TRAILS
- FOOD & BEVERAGE
- RIVER/PONDS
- PARK & RIDE

SEASONAL AMENITIES

● HIGH USE ● LIMITED ● LOW USE

● SPRING ● FALL

● SUMMER ● WINTER

LOCATION : 1810 2nd Avenue NW
SIZE : 131.1 acres
CLASSIFICATION : Community Park/Playfield
REC CENTER : No
SCHOOL CONNECTIONS : None
CURRENT PROJECTS : None

CENTRAL PARK



CONTEXT

This historic park is located downtown and within walking distance to the 200 and 300 block of Central Ave. Central Park hosts the Faribault Heritage Days and other community events. Farmer's market are held during the summer and fall on Wednesdays and Saturdays.

CURRENT CONDITIONS AND CONCERNS

Overall the park is in good condition and well maintained. The gardens and mature trees appear to be healthy. The picnic areas do not meet ADA accessibility. The band shell and performance area are in very good condition but have a limited amount of space for seating. The rear of the band shell is visible to neighbors and could use a buffer or visual improvement.

PARK FACILITY CONDITIONS (SITE VERIFIED)

● GOOD ● FAIR ● POOR

- PLAYGROUND
- PICNIC AREAS
- RESTROOM
- BAND SHELL

SEASONAL AMENITIES

● HIGH USE ● LIMITED ● LOW USE

● SPRING ● FALL

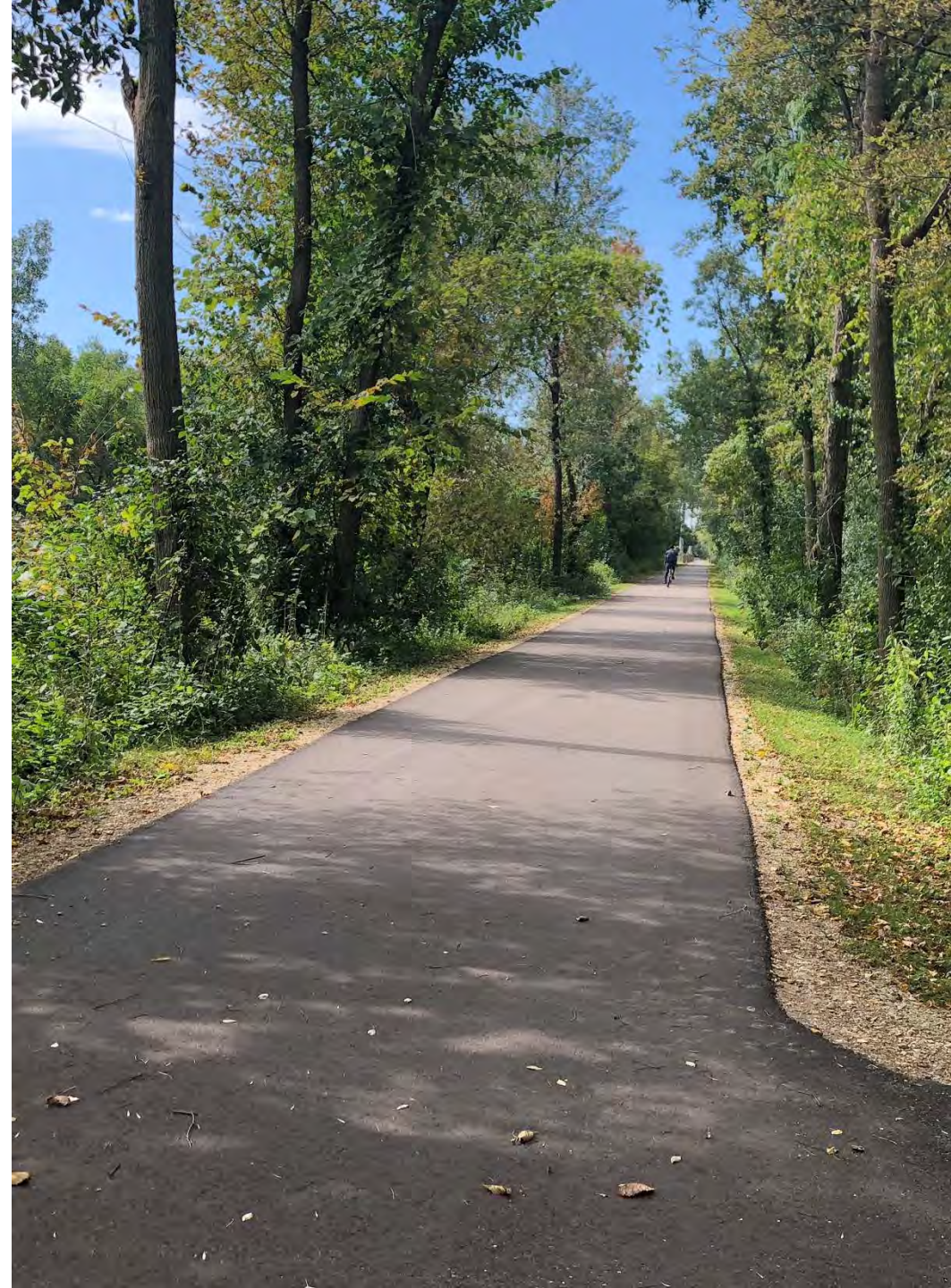
● SUMMER ● WINTER

LOCATION : 510 NW 2nd Avenue
SIZE : 2.5 acres
CLASSIFICATION : Community Park/Playfield
REC CENTER : No
SCHOOL CONNECTIONS : None
CURRENT PROJECTS : None

National Park Data Trends – Diversity in Parks

- CDC data suggestions Latino population less likely to use park space and less likely to be physically active
- Public parks promote healthy living for those who don't have access by other means
- Data shows providing park space and trails is not enough to promote activity
- Largest barrier to visiting regional parks is lack of awareness

Source: Journal of Physical Activity and Health, 2008



National Park Data Trends – Diversity in Parks

Constraints:

- Family Obligations
- Safety
- Weather
- Perceived Racial Boundaries
- Fatigue
- Time
- Cultural Expectations

Most Frequent Reported Activities:

- Playing with Kids
- Relaxing
- Picnicking
- Walking/Hiking
- Group Sports

Most Important Park Characteristics:

- Beauty
- Maintenance
- Cleanliness of Facilities

Source: Journal of Physical Activity and Health, 2008

National Park Data Trends – Diversity in Parks

Preferred Outdoor Recreational Activities:

African Immigrant Focus Group

- Use Playground
- Walking
- Be with Family

Hispanic / Latino / Latina Focus Group

- Celebrate/Party
- Picnic/BBQ
- Be with Family

Source: Regional Park Use Among Select Communities of Color, 2014, Metropolitan Council

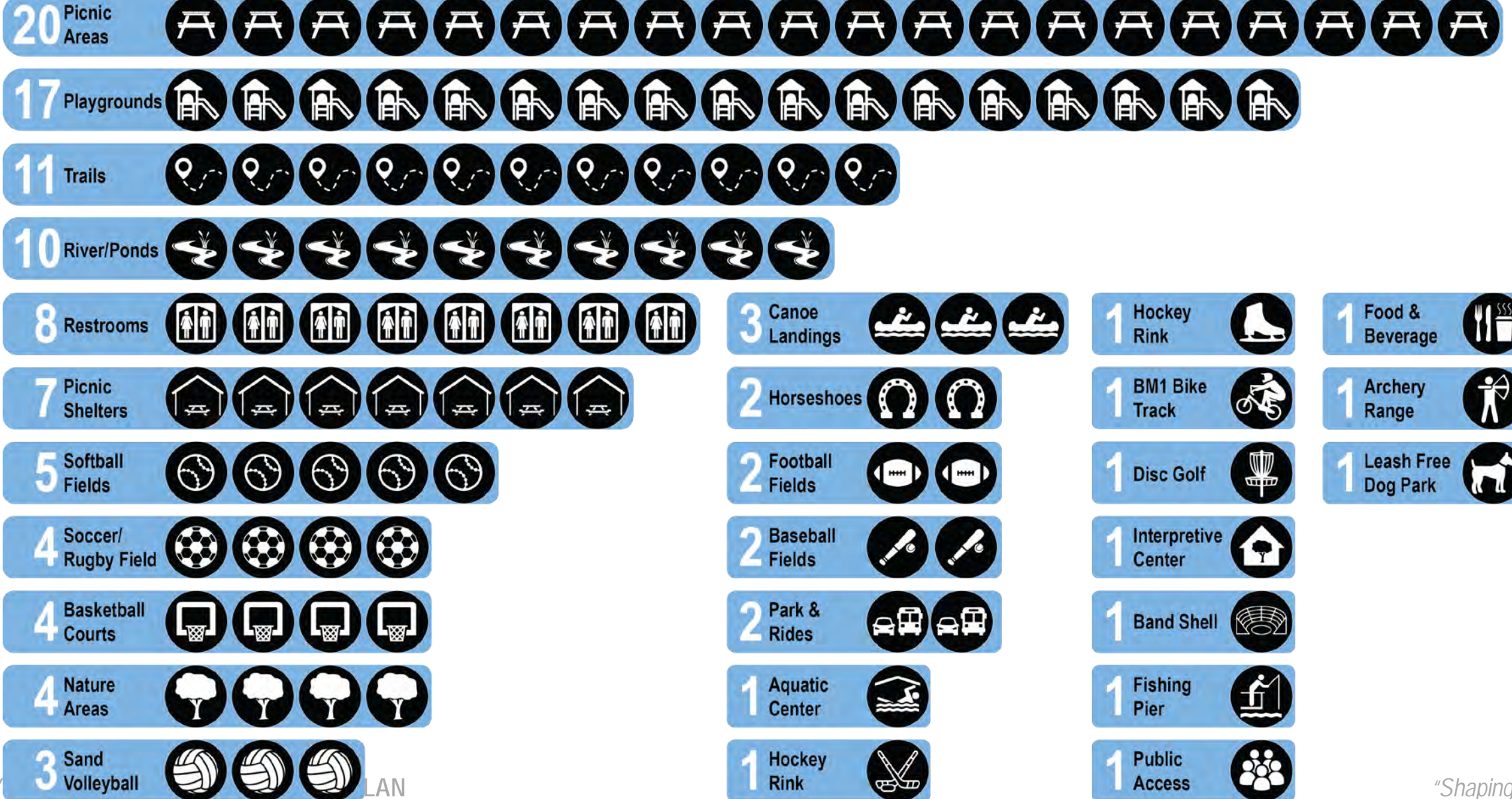
National Park Data Trends – Facility Standards

	TARGET WITH 2016 POPULATION ESTIMATE	CURRENT TOTAL IN EXISTING PARKS
Basketball		
2.5 Basketball hoops per 10,000 residents	6	4
Community Garden Plots		
3.3 Garden plots per 10,000 residents	8	0
Diamonds (Premier & Multipurpose)		
1.76 Total number of diamonds per 10,000 residents	4	7
Disc Golf		
0.4 Disc golf courses per 100,000 residents	1	1
Playground		
2.31 Playgrounds per 10,000 residents	5	17
Skate Parks		
.4 skate parks per 100,000 residents	1	0
Splash Pads		
1.45 Splash Pads per 100,000 residents	1	0
Swimming Pools		
2.43 per 100,000 residents	1	0
Tennis		
1.8 Courts per 10,000 residents	5	0
Volleyball		
1.7 Nets per 100,000 residents	4	3

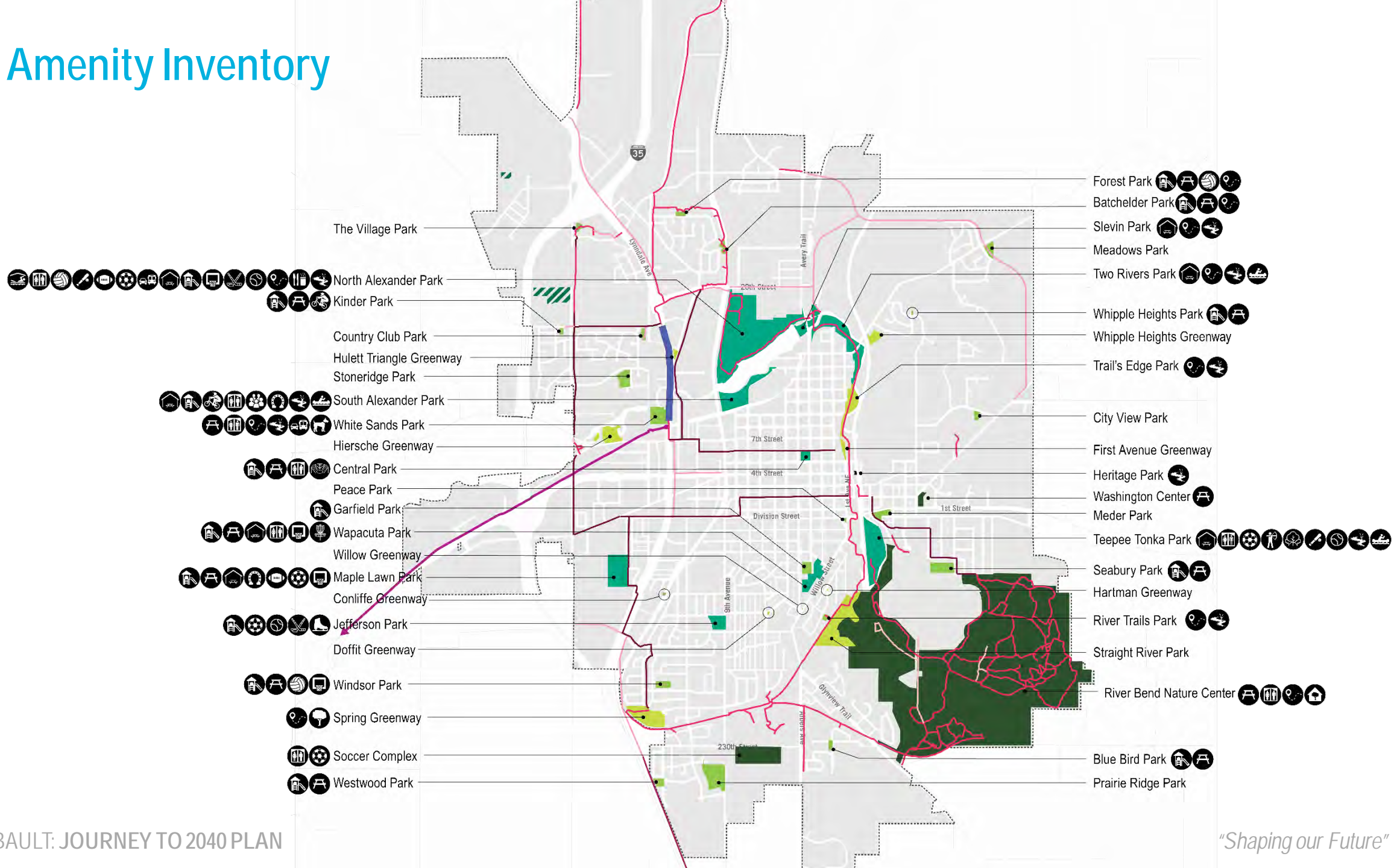
Source: Center for City Park Excellence, The Trust for Public Land



Park Amenity Inventory



Park Amenity Inventory



Park Facilities – Water & Nature Programming



North Alexander Park

South Alexander Park

 White Sands Park

Spring Greenway

Slevin Park

Two Rivers Park

Trail's Edge Park

Heritage Park

Teepee Tonka Park

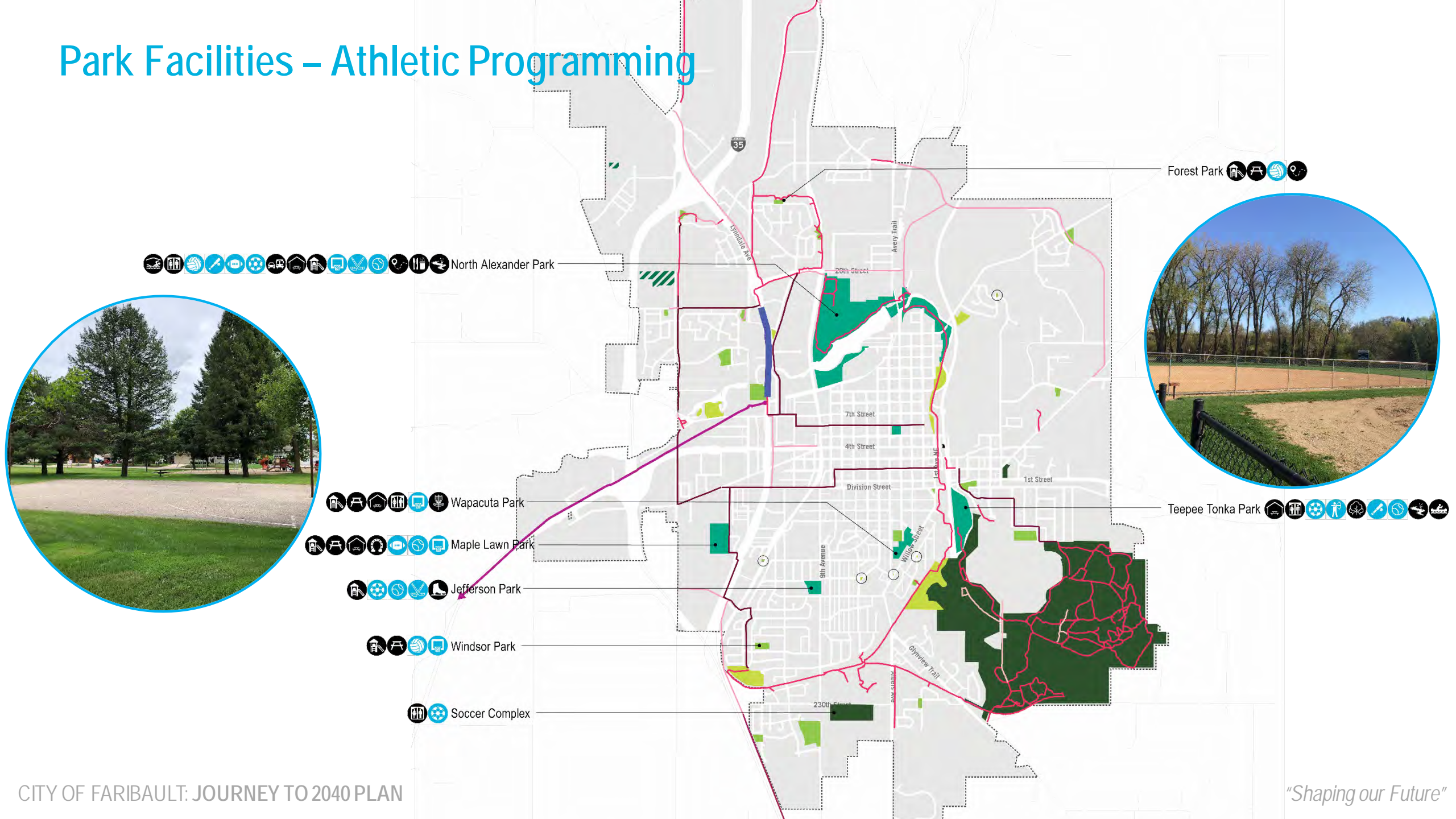
River Trails Park

River Bend Nature Center

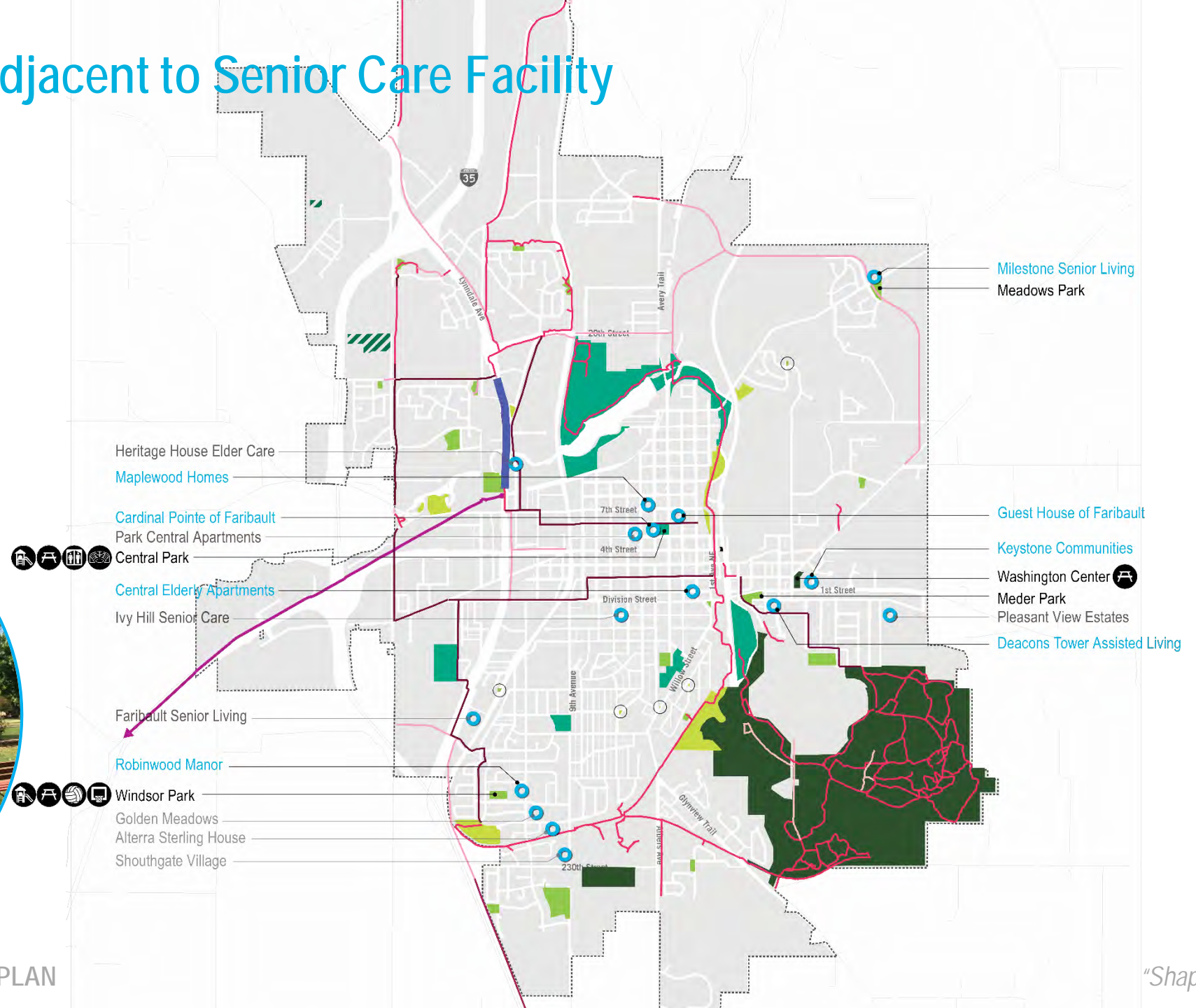
Park Facilities – Winter Programming



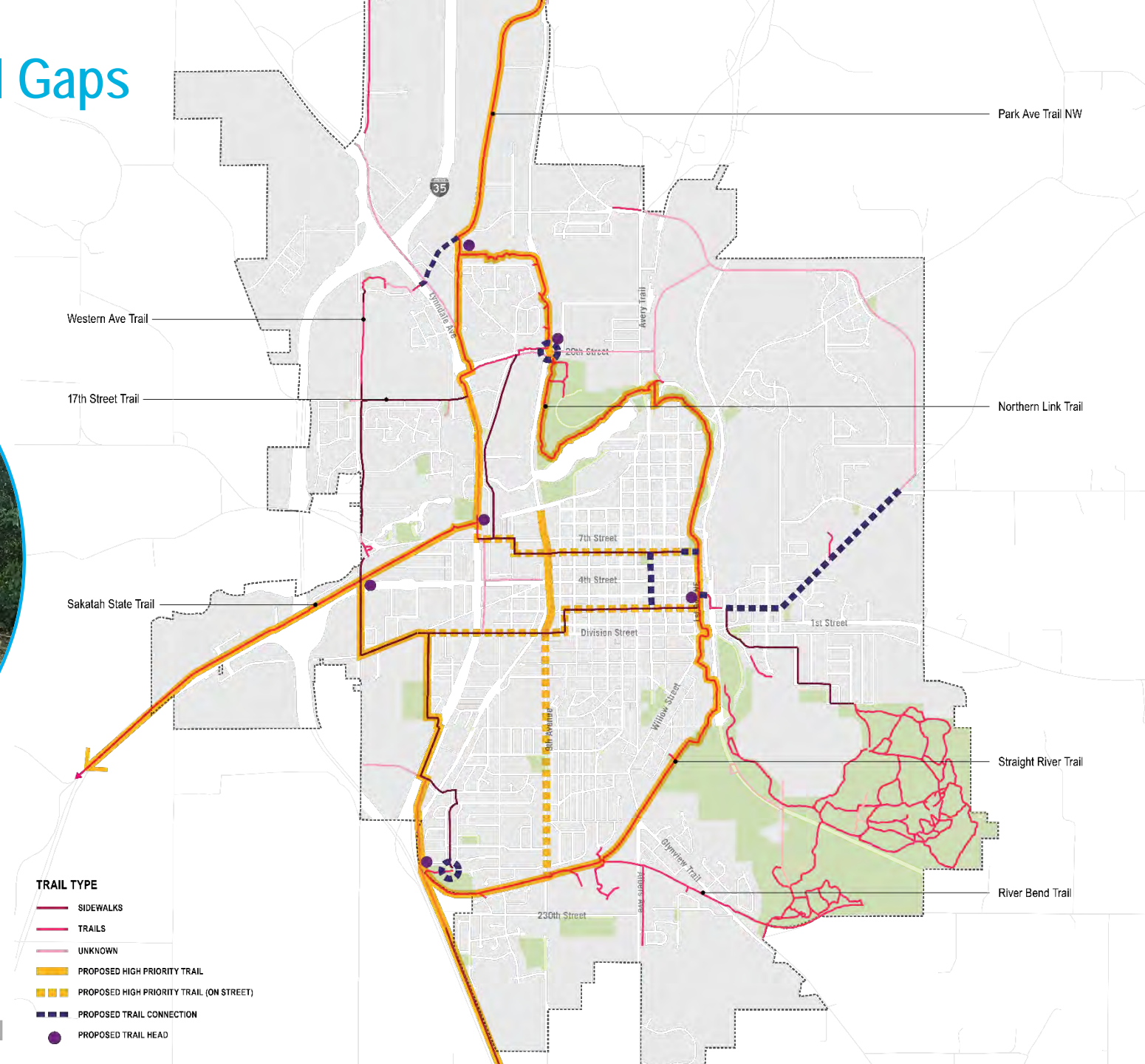
Park Facilities – Athletic Programming



Park Facilities – Adjacent to Senior Care Facility



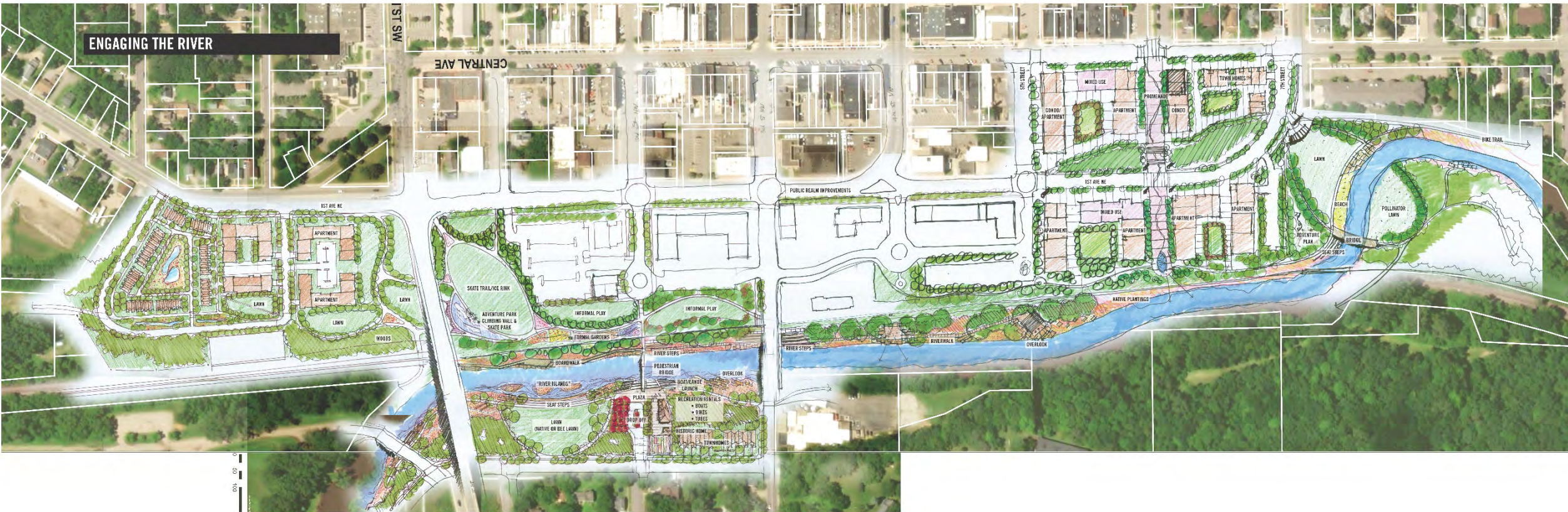
Park Facilities – Trail Gaps





REVIEW DOWNTOWN DESIGN CONCEPTS

Engaging the River





1ST AVE NE

APARTMENT

APARTMENT

LAWN

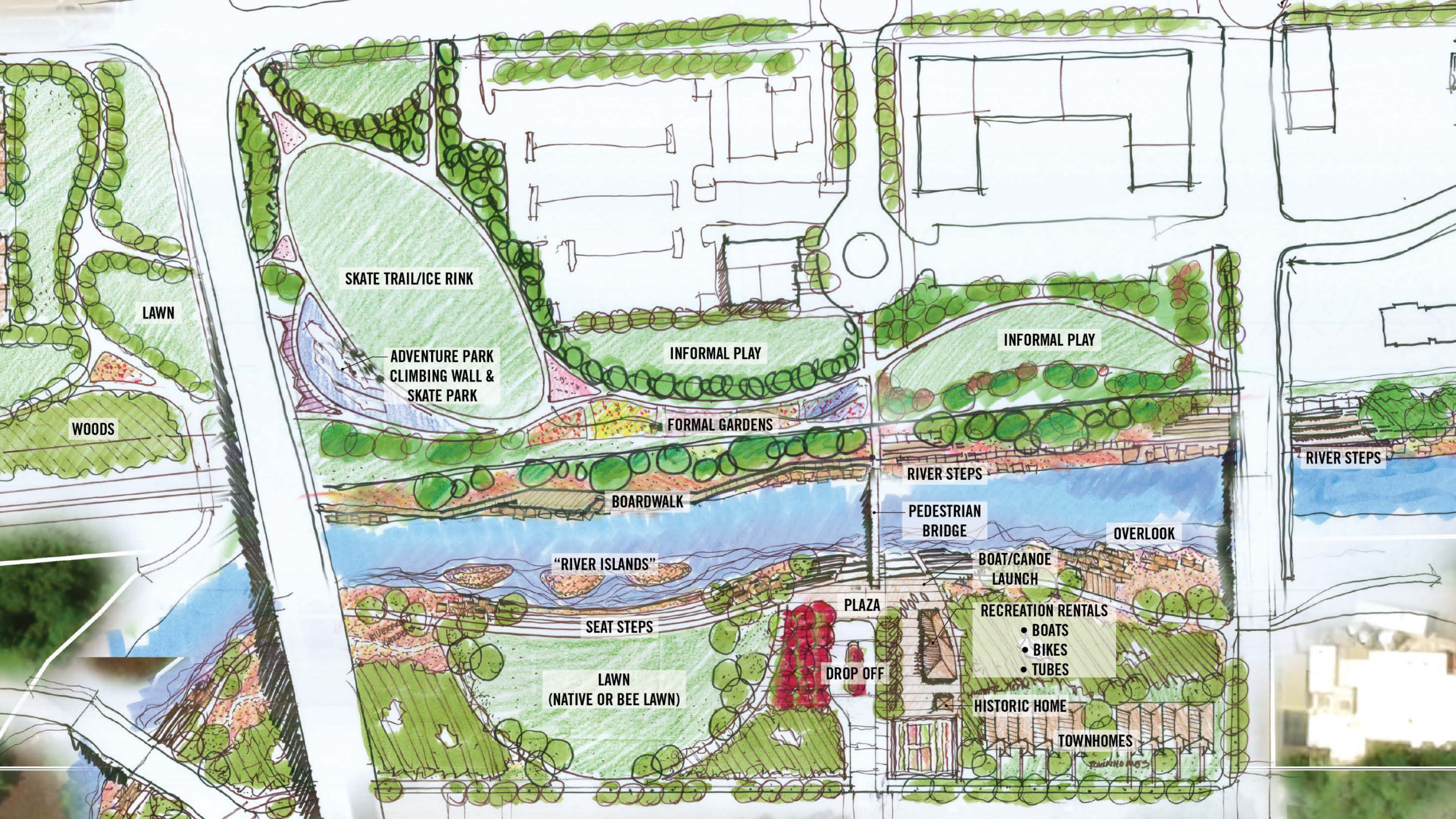
LAWN

LAWN

WOODS

Legend

DIVISION



LAWN

WOODS

SKATE TRAIL/ICE RINK

ADVENTURE PARK
CLIMBING WALL &
SKATE PARK

INFORMAL PLAY

FORMAL GARDENS

INFORMAL PLAY

BOARDWALK

RIVER STEPS

RIVER STEPS

PEDESTRIAN
BRIDGE

OVERLOOK

"RIVER ISLANDS"

BOAT/CANOE
LAUNCH

SEAT STEPS

RECREATION RENTALS
• BOATS
• BIKES
• TUBES

LAWN
(NATIVE OR BEE LAWN)

PLAZA

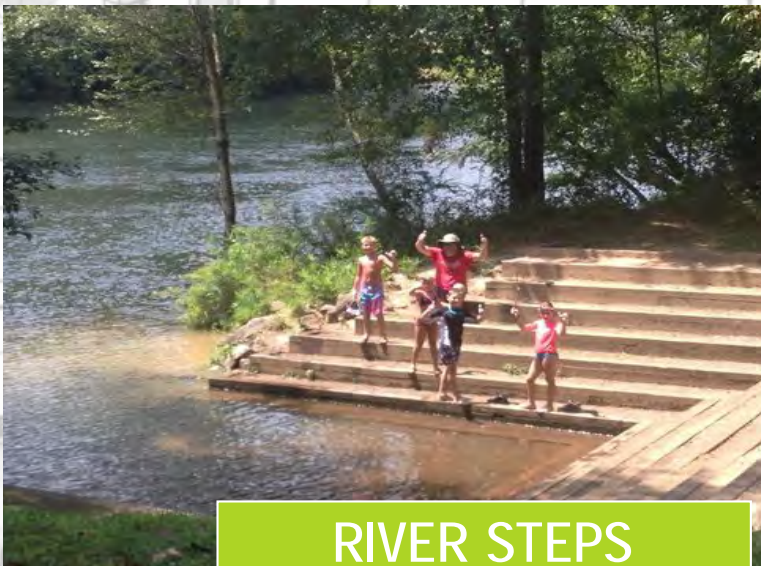
DROP OFF

HISTORIC HOME

TOWNHOMES



RECREATION RENTAL



RIVER STEPS



BEE LAWN



ADVENTURE PLAY

PUBLIC REALM IMPROVEMENTS

1ST AVE NE

MIXED USE

APARTMENT

APARTMENT

APARTMENT

NATIVE PLANTINGS

RIVER STEPS

RIVERWALK

OVERLOOK

PUBLIC REALM IMPROVEMENTS

1ST AVE NE

MIXED USE

APARTMENT

APARTMENT

APARTMENT

NATIVE PLANTINGS

RIVER STEPS

RIVERWALK

OVERLOOK

5TH STREET

CONDO/
APARTMENT



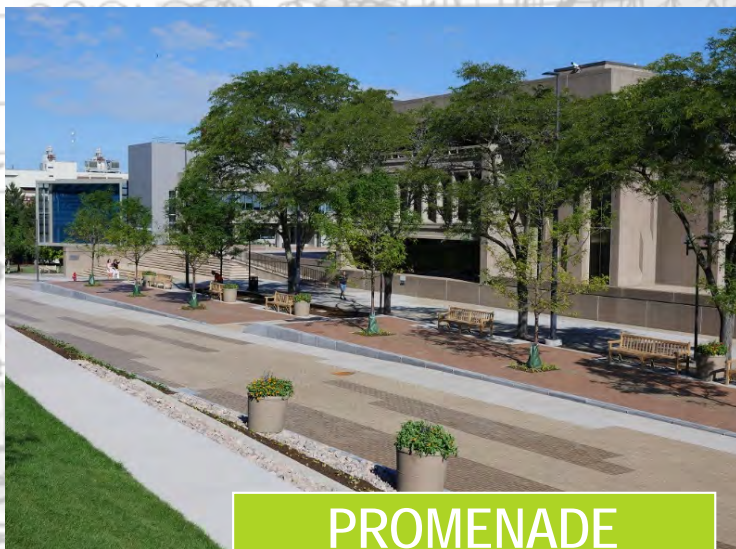
HOUSING

1ST AVE NE



POLLINATOR LAWN

APARTMENT



PROMENADE

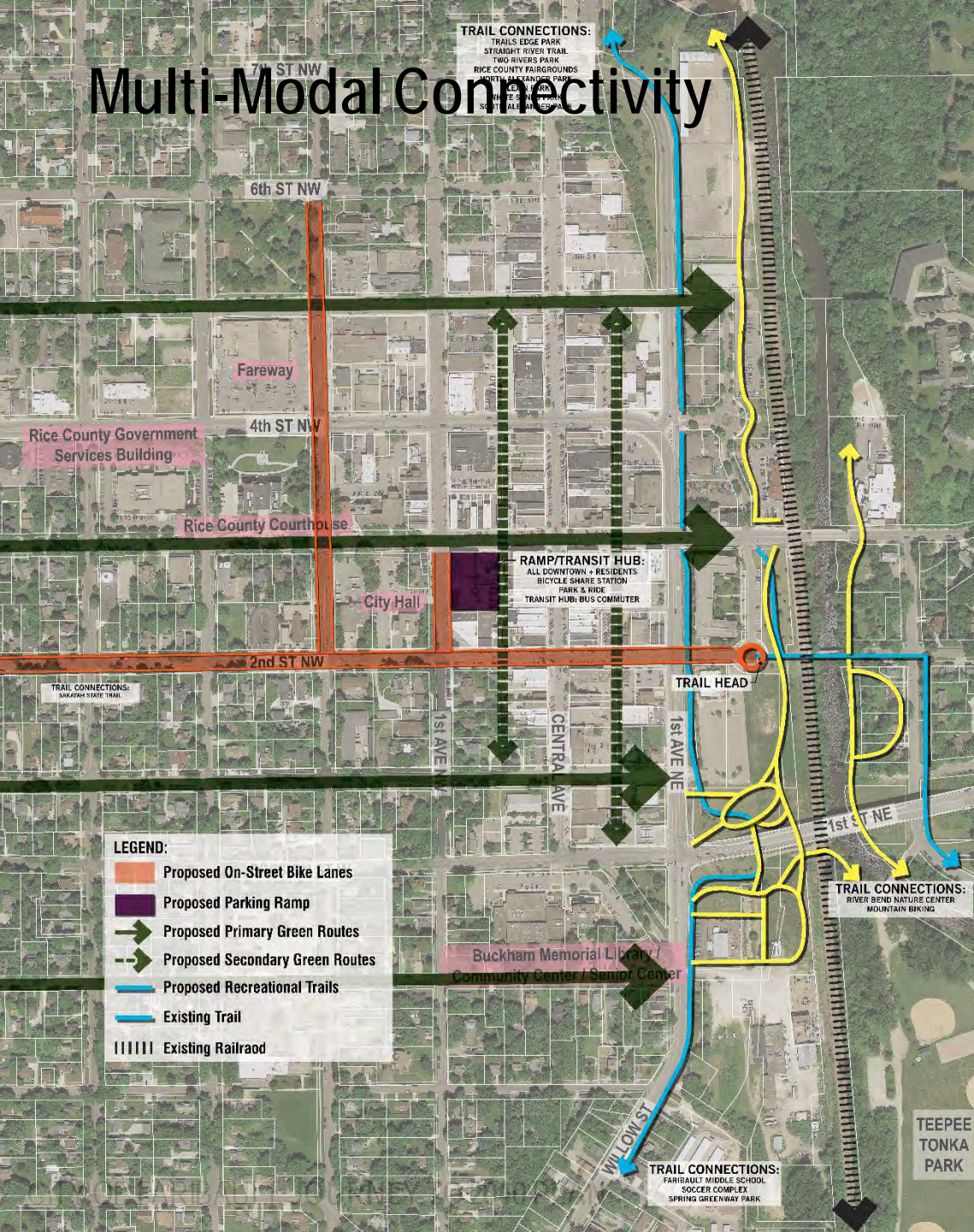
NATIVE PLANTINGS



BEACH

POLLINATOR
LAWN

Multi-Modal Connectivity



A photograph of a park scene. In the center, a white statue of a woman in a long dress stands on a stone pedestal. In the foreground, there is a large bush of red flowers. The background is filled with lush green trees and a paved area. The text "REVIEW PRELIMINARY DESIGN PRINCIPLES" is overlaid in blue on the right side of the image.

REVIEW PRELIMINARY DESIGN PRINCIPLES

WHAT DOES THIS ALL MEAN FOR THE PARKS, TRAILS, AND OPEN SPACE PLAN?

Preliminary Design Principles

A set of guidelines/principles to be applied to the system-wide plan:

1. Diversification of park facilities
2. Improved connectivity within the park and trail systems
3. Accessibility for all
 - Multi-generational activities throughout the City
 - ADA compliant facilities
4. Gathering spaces
5. Connection to the natural spaces and activate the river where possible
6. Sustainable approach
 - Ability to respond to events in the community

A close-up photograph of an archery target. The target features concentric rings of color: a central yellow bullseye, followed by red, blue, black, and white outer rings. Several arrows with white fletching and red nocks are embedded in the target. Two arrows are clearly visible hitting the yellow bullseye, while others are clustered in the red and blue rings. The background is dark and out of focus.

PARK PROGRAMMING PRIORITIZATION ACTIVITY

Programming Priorities Activity

Materials:

Each table has a **large ring sheet** and a bag of **facility chips**

Process:

1. Tables have **15 minutes** to place chips on the various rings based on their preferences and group discussion
2. Support facilities such as light fixtures, bike racks, restrooms, etc. are assumed to be present as part of basic park operation and are not included in this exercise
3. There are blank chips so additional site facilities can be added
4. Not all the chips have to be used!

STOP!

REPORT OUT (10 min)

REDUCE THE CHIPS TO NO MORE THAN
5 PER RING
(10 min)

STOP!

REPORT OUT (10 min)

Preliminary Design Principles (Review)

A set of guidelines/principles to be applied to the system-wide plan:

1. Diversification of park facilities
2. Improved connectivity within the park and trail systems
3. Accessibility for all
 - Multi-generational activities throughout the City
 - ADA compliant facilities
4. Gathering spaces
5. Connection to the natural spaces and activate the river where possible
6. Sustainable approach
 - Ability to respond to events in the community



NEXT STEPS

Next Steps

- ✓ PSC Meeting #3 – Early November (TBD)
- ✓ Community Forum #2 (Parks Focus) – Mid November (TBD)



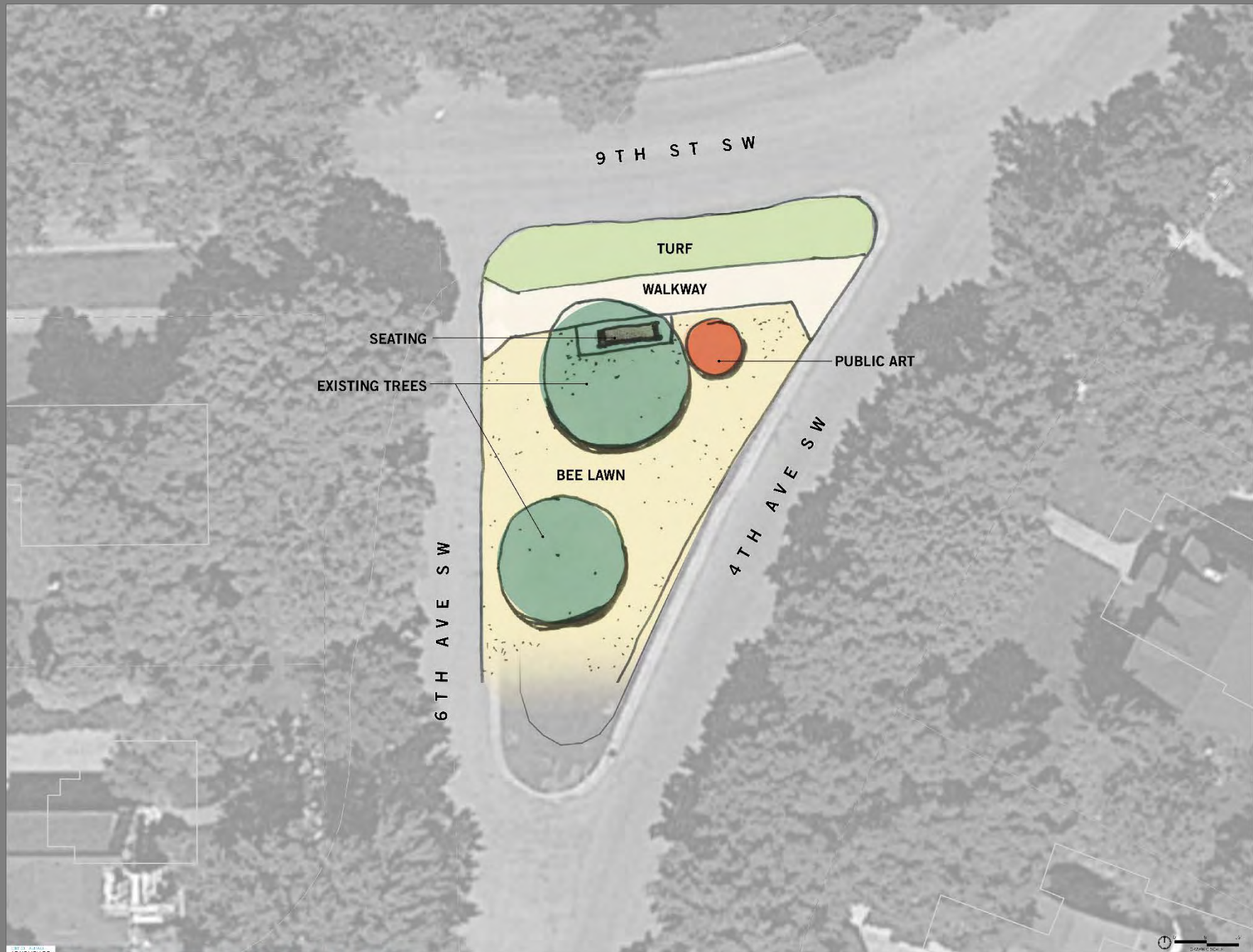
REVIEW CONCEPTS FOR LINEAR PARKS



CONLIFFE GREENWAY CONCEPT

PERKINS+WILL TEAM

10-04-2018



DOFFITT GREENWAY CONCEPT

PERKINS+WILL TEAM

10-04-2018



