



PARKS, TRAILS, & OPEN SPACE STEERING COMMITTEE: MEETING #3

REVIEW PRELIMINARY PARK CONCEPTS

NOVEMBER 15, 2018

AGENDA

Parks, Trails, & Open Space Steering Committee: Meeting #3

6:00	Review Previous Engagement Efforts
6:05	Review Special Feature Park Concepts (7 parks, 5 minutes per park)
6:40	Review Community Park Concepts (8 parks ,5 minutes per park)
7:10	Review Community Park Concepts (14 parks, 3 minutes per park)
7:30	5 minute break
7:35	Review Remaining Neighborhood Park Concepts
7:52	Review Linear Park Concepts (9 parks, 1 minute per park)
8:01	Review Overall Park System Plan
8:00	Adjourn

Meeting #1 Goals

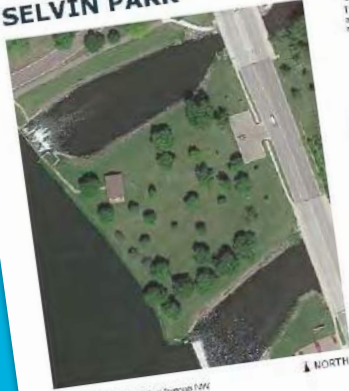
- ✓ *Review concepts for every park in the system*
- ✓ *Build consensus for direction of park concepts*
- ✓ *Review overall park system plan*



REVIEW PREVIOUS ENGAGEMENT & PLANNING EFFORTS

Updated Park Profiles

SELVIN PARK



CONTEXT

This park is located on the northeast side of the Cannon River Reservoir and is adjacent to the park Selvin Park, also has pedestrian access to North Alexander Park and Tons River Park.

CURRENT CONDITIONS AND CONCERNS

Selvin Park has well maintained open lawn space and healthy mature trees. Access to the river can be problematic and the park does have a lot of walking trails. The park does not meet ADA guidelines. The picnic shelter is well maintained building. The park does not meet ADA guidelines.

PARK FACILITY CONDITIONS (SITE VERIFIED)

GOOD FAIR POOR

- PICNIC AREAS
- PICNIC SHELTER
- TRAILS
- RIVERPONDS

SEASONAL AMENITIES

HIGH USE LIMITED LOW USE
SPRING FALL
SUMMER WINTER

LOCATION : 1802 2nd Avenue NW
SIZE : 2.9 acres
CLASSIFICATION : Community Park/Playfield
REC CENTER : No
SCHOOL CONNECTIONS : None
CURRENT PROJECTS : None

TEEPEE TONKA PARK



CONTEXT

This sports focused park facility is located a quarter mile from downtown Fairbault along the Straight River. It is directly adjacent to the River Bend Nature Center and connected to the nature center's trail system. The elevated railroad adjacent to the western edge of the park, the river lying to the east and south, and the river topography makes this park disconnected from the surrounding city and residential communities. This surrounding park for park programming.

CURRENT CONDITIONS AND CONCERNS

The park is generally in good condition with well maintained fields and diamonds. The park is located within the floodplain and has been seriously flooded during the spring over the past 5 years. After each flood period, the park features need to be rebuilt and needs considerable resources to maintain. There is significant erosion along the banks of the Straight River. This creates a safety hazard at several highly trafficked locations and limits the planned access to the river.

PARK FACILITY CONDITIONS (SITE VERIFIED)

GOOD FAIR POOR

- PICNIC AREAS
- PICNIC SHELTER
- RESTROOM
- SOCCER/RUGBY FIELD
- NATURE AREAS
- CANOE LANDING
- RIVERPONDS
- ARCHERY RANGE

SEASONAL AMENITIES

HIGH USE LIMITED LOW USE
SPRING FALL
SUMMER WINTER

LOCATION : 10 2nd Avenue NE
SIZE : 25.2 acres
CLASSIFICATION : Community Park/Playfield
REC CENTER : No
SCHOOL CONNECTIONS : None
CURRENT PROJECTS : None

PRAIRIE RIDGE PARK



CONTEXT

Prairie Ridge Park is located in the southern most region of Fairbault, east of highway 35. The Fairbault Soccer Complex is just east of the site and agricultural fields border the south and southeast areas of the park. The park is located in a single family residential neighborhood.

CURRENT CONDITIONS AND CONCERNS

Currently this park is open, mowed area with no vegetation or programming.

PARK FACILITY CONDITIONS (SITE VERIFIED)

GOOD FAIR POOR

SEASONAL AMENITIES

HIGH USE LIMITED LOW USE
SPRING FALL
SUMMER WINTER

LOCATION : 2000 6th Avenue SW
SIZE : 15.7 acres
CLASSIFICATION : Community Park/Playfield
REC CENTER : No
SCHOOL CONNECTIONS : None

NORTH ALEXANDER PARK



CONTEXT

North Alexander Park is a premier destination athletic park in Fairbault. Located north of the Cannon River Reservoir, the park is adjacent to and has views of the historic Fairbault Shovel Mill. The Fairbault Family Aquatic Center and Rice County Fairground border the north side of the park as well. This park hosts many of the City's athletic tournaments. It also has the largest play area in Fairbault.

CURRENT CONDITIONS AND CONCERNS

This park is well maintained and is generally in good condition. The fencing and ball fields are in good condition and operate well for the community. The play area is also in good condition and has two types of play equipment. They share a bathroom. The buildings are also well maintained and heavily used. Some picnic shelters are aging and should be replaced or renovated. Many years of the park, including the play containers, swings, and picnic areas do not meet ADA guidelines.

PARK FACILITY CONDITIONS (SITE VERIFIED)

GOOD FAIR POOR

- PLAYGROUND
- PICNIC AREAS
- PICNIC SHELTER
- RESTROOM
- AQUATIC CENTER
- SAND VOLLEYBALL
- FOOTBALL FIELDS
- BASISBALL FIELD
- SOFTBALL FIELD
- HOCKEY ARENA
- TRAILS
- FOOD & BEVERAGE
- RIVERPONDS
- PARK & RIDE

SEASONAL AMENITIES

HIGH USE LIMITED LOW USE
SPRING FALL
SUMMER WINTER

LOCATION : 1810 2nd Avenue NW
SIZE : 191.1 acres
CLASSIFICATION : Community Park/Playfield
REC CENTER : No
SCHOOL CONNECTIONS : None
CURRENT PROJECTS : None

CENTRAL PARK



CONTEXT

This historic park is located downtown and within walking distance to the 200 and 300 block of Central Ave. Central Park hosts the Fairbault Heritage Days and other community events. Farmer's market are held during the summer and fall on Wednesdays and Saturdays.

CURRENT CONDITIONS AND CONCERNS

Overall the park is in good condition and well maintained. The gardens and mature trees appear to be healthy. The picnic areas do not meet ADA accessibility. The band shell and performance area are in very good condition but have a limited amount of space for seating. The rear of the band shell is visible to neighbors and could use a buffer or visual improvement.

PARK FACILITY CONDITIONS (SITE VERIFIED)

GOOD FAIR POOR

- PLAYGROUND
- PICNIC AREAS
- RESTROOM
- BAND SHELL

SEASONAL AMENITIES

HIGH USE LIMITED LOW USE
SPRING FALL
SUMMER WINTER

LOCATION : 910 NW 2nd Avenue
SIZE : 2.5 acres
CLASSIFICATION : Community Park/Playfield
REC CENTER : No
SCHOOL CONNECTIONS : None
CURRENT PROJECTS : None



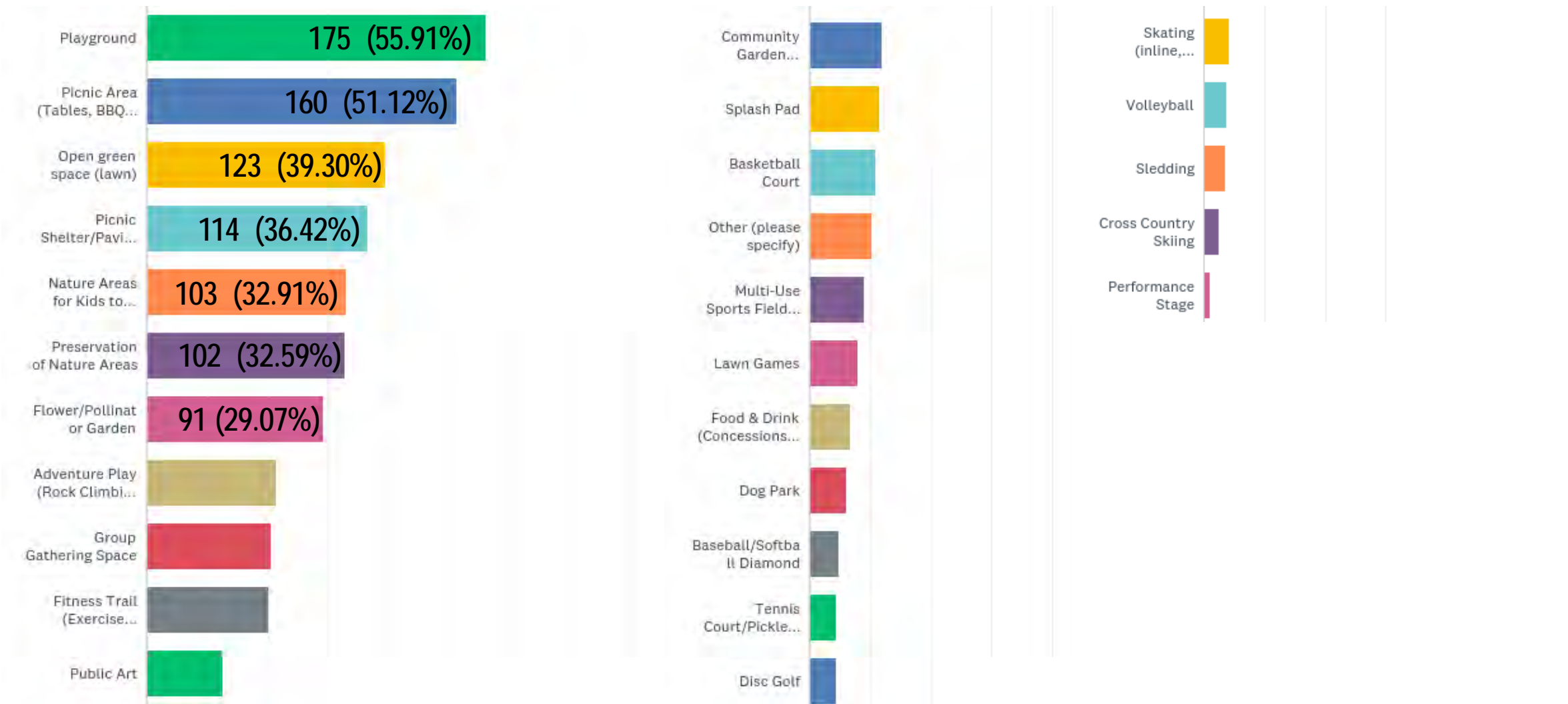
Bullseye Activity

1. Tier 1 (park elements that belong in every park):
 - a. Walking Trail
 - b. Picnic Area
 - c. Nature Play
 - d. Gathering Space
 - e. Playground
2. Tier 2 (park elements that belong in 50% of the parks):
 - a. Green Space
 - b. Pollinator Garden
 - c. Basketball Court
 - d. Public Art
 - e. Fitness Trail
3. Tier 3 (park elements that belong in 10% of the parks):
 - a. River Access/Kayaking
 - b. Fully Accessible Playground
 - c. Ice Skating
 - d. Skate Park
 - e. Splash Pad

Bullseye Activity (Public Survey)

313 Total Responses

Q1: As part of the Journey to 2040, we are updating the parks, trails and open space plan. When thinking about the future of parks in Faribault, which of the following park facilities do you think should go in every park? Pick up to five facilities.



Bullseye Activity (Public Survey)

Q1: As part of the Journey to 2040, we are updating the parks, trails and open space plan. When thinking about the future of parks in Faribault, **which of the following park facilities do you think should go in every park?** Pick up to five facilities.

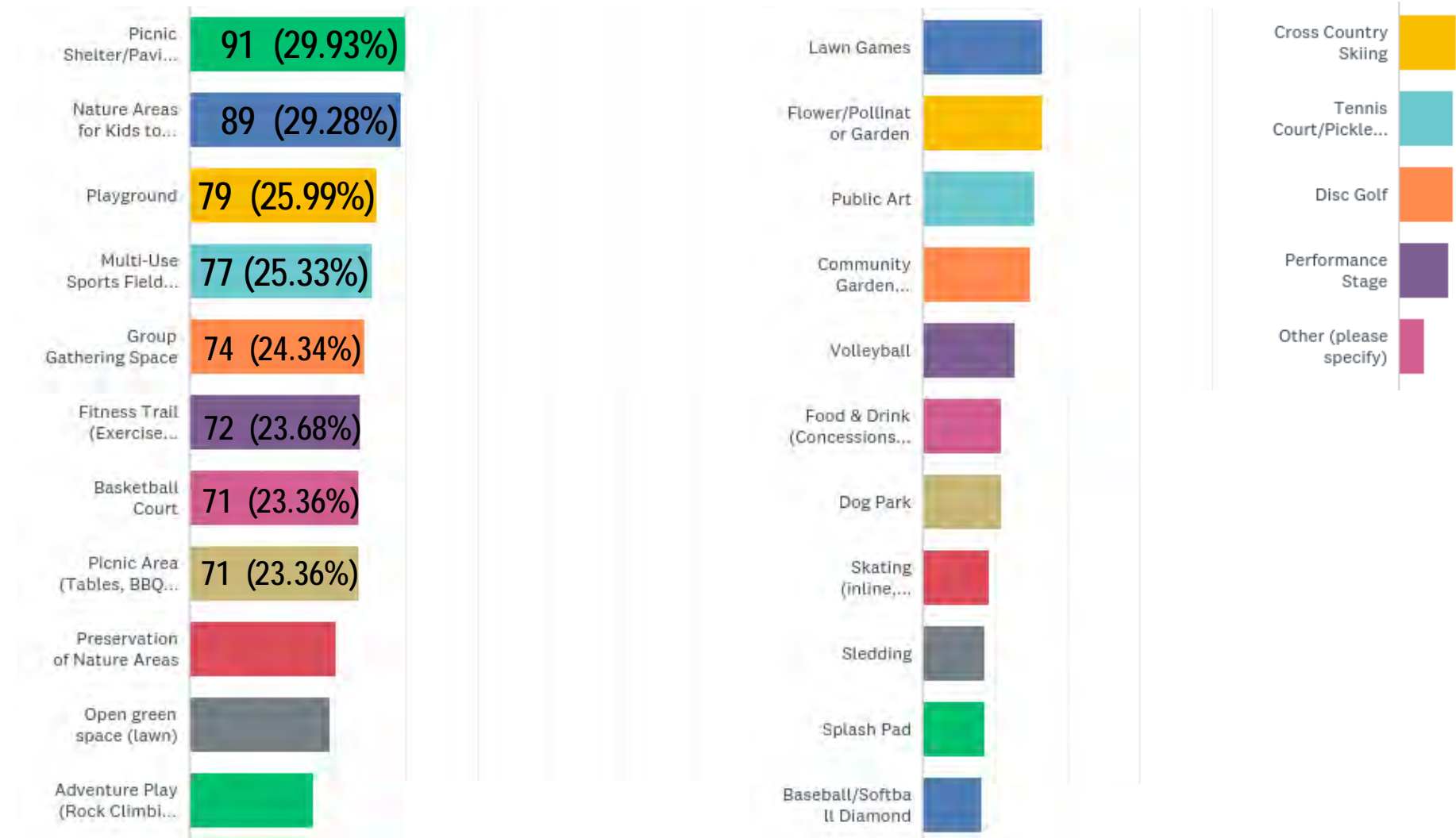
OTHER (PLEASE SPECIFY)
Bench or other seating
Less lawn. More natural areas
Roof over picnic tables with 2++ bbq grill
Restrooms
Drinking fountains!
Fire pit
Restrooms
More bike paths
Many of these things are cost prohibitive or illogical to be at every park. I think Faribault can create a special destination within each park, and have some amenities that are at every park. Some of the ideas listed are a little redundant and could be combined better. Marketing the spaces to be more multifunctional. Every park should have spaces designed to attract children, adolescents and adults. One could have a nature area for kids to play, which includes a wildflower garden, while another has a playground. One may have a green space that can be used for yoga, soccer, football, etc.
At least one sport - volleyball, tennis, skating, etc.
Three stream waste disposal (landfill/recycling/compost)
Functional Rest room
Campsites
Paved paths for running, biking, and roller blading that connect it with other parks/green spaces to make a bigger trail system
Water Fountains
Restrooms
Restrooms
More environmental space dedicated for natural environmental interface
facilities - water/bathroom
Trail connecting it to other trails and parks.

wheelchair swings for the handicaped !!
Love the ideas of volleyball, baseball, basketball, splash pad, performance stage, etc but not at every park, perhaps put something unique from that list at each park so each park has its own twist
I prefer keeping the parks natural. River bend does a great job with that!!!
Trail connecting every park to all other parks
Not every park...
More trees with more diverse species
Ponds with stocked fish (Catch and release only)
Dual swing for adult and child together
Water fountains
Connection to bike trails
Bathroom
Outdoor fitness machines

7 people wrote in “Restrooms”

Bullseye Activity (Public Survey)

Q2: When thinking about the future of parks in Faribault, which of the following park facilities do you think should go in 50% of the parks? Pick up to five facilities.



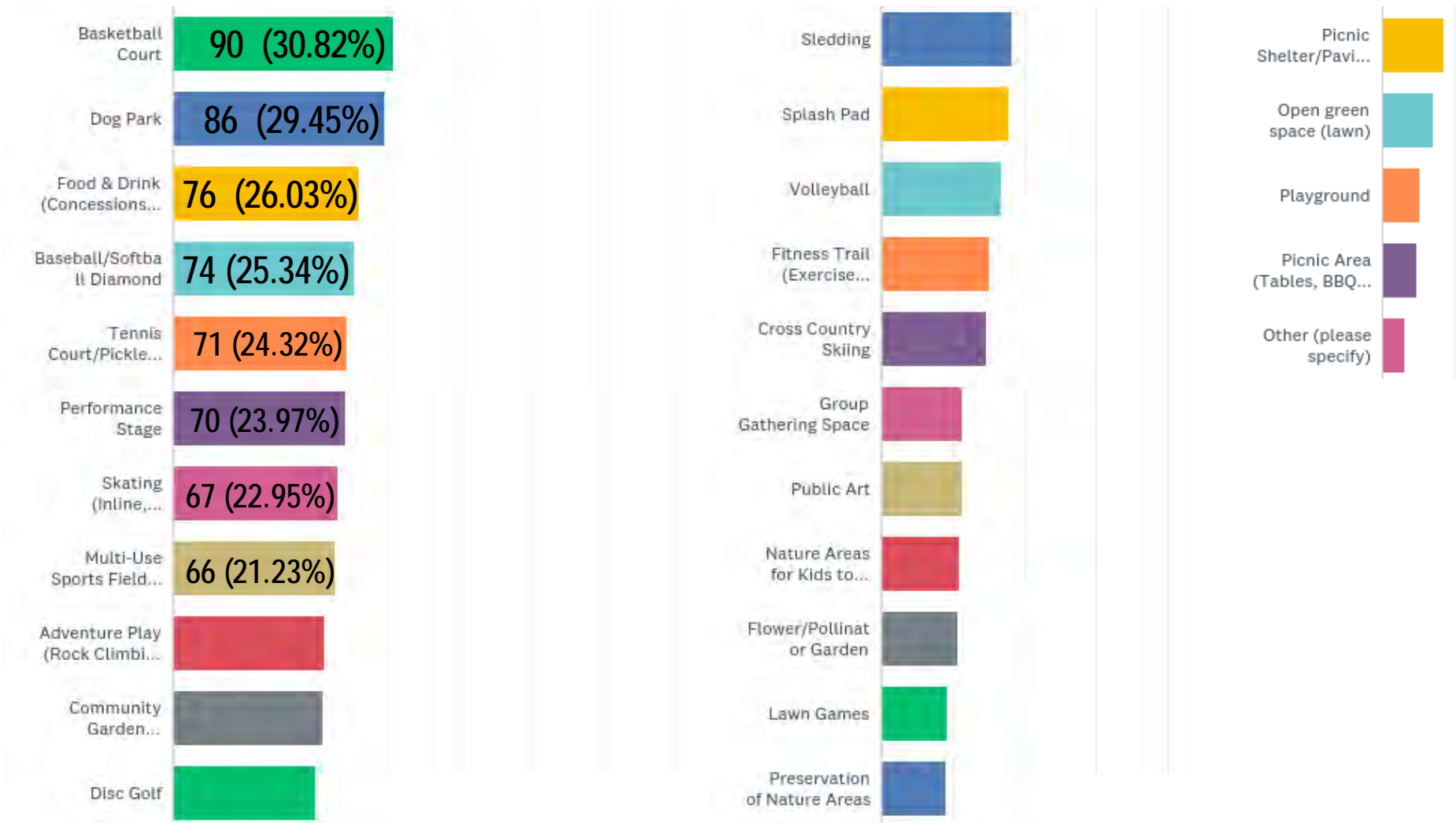
Bullseye Activity (Public Survey)

Q2: When thinking about the future of parks in Faribault, which of the following park facilities do you think should go in 50% of the parks? Pick up to five facilities.

OTHER (PLEASE SPECIFY)
Bench or seating other than picnic table
Pickleball courts painted on basketball courts
Restroom
Volleyball
Disc golf
water/bathroom facilities
wheelchair swings
More trees
Basketball hoops
Handicap accessible playground equipment
Splash Pad

Bullseye Activity (Public Survey)

Q3: When thinking about the future of parks in Faribault, which of the following park facilities do you think should go in 10% of the parks? Pick up to five facilities.



Bullseye Activity (Public Survey)

Q3: When thinking about the future of parks in Faribault, which of the following park facilities do you think should go in 10% of the parks? Pick up to five facilities.

OTHER (PLEASE SPECIFY)

Pickleball courts

Single track mountain bike trails

Outdoor climbing wall etc.

I think all of these ideas should be incorporated into Faribault's parks somehow. Survey monkey only allows 5 choices for each question. I think each park needs to have community sponsored activities throughout the year to bring people together outdoors more.

Maybe I missed it, but how many parks are we talking about in total? It's difficult to make a fiscally responsible/feasible answer with not knowing that info.

No others

Not sure

wheelchair swings

More trees

Preliminary Design Principles

A set of guidelines/principles to be applied to the system-wide plan:

1. Diversification of park facilities
2. Improved connectivity within the park and trail systems
3. Accessibility for all
 - Multi-generational activities throughout the City
 - ADA compliant facilities
4. Gathering spaces
5. Connection to the natural spaces and activate the river where possible
6. Sustainable approach
 - Ability to respond to events in the community

Concept Review

1. The concepts are “high level” and will be refined at the next round
2. You are going to have to make a lot of **FAST** decisions
 - a) We are here to get consensus
 - b) We will take a vote if needed
 - c) Be respectful of all opinions
3. Your worksheet is to help you follow along – you can provide additional written feedback after the meeting
4. The public will have an opportunity to provide feedback



REVIEW SPECIAL FEATURE PARK
CONCEPTS *(5 MIN PER PARK)*

Map

on for your map



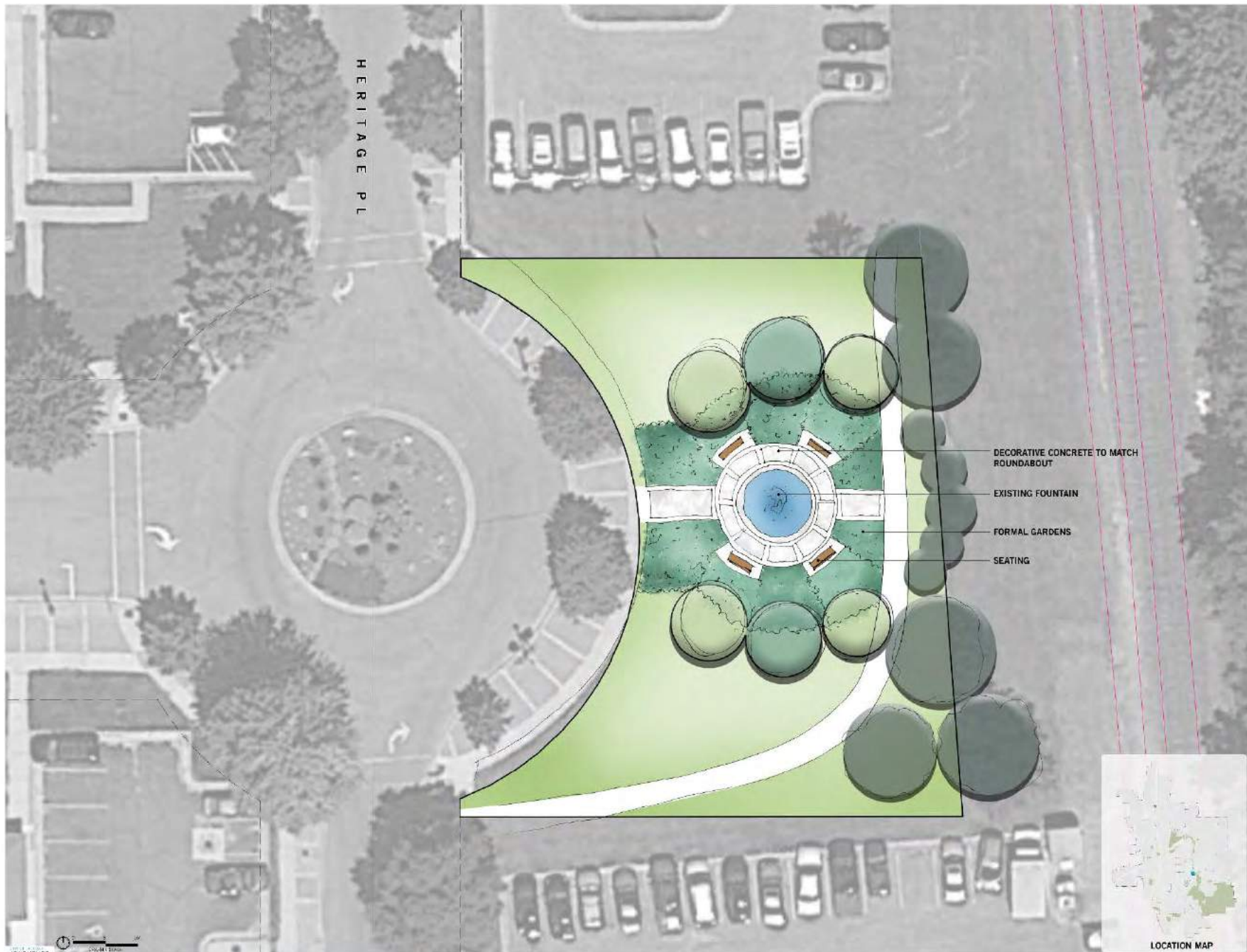
FARIBAULT SOCCER COMPLEX - CONCEPT A

PERKINS+WILL TEAM

11-15-2018







HERITAGE PARK - CONCEPT A

PERKINS+WILL TEAM

11-15-2018



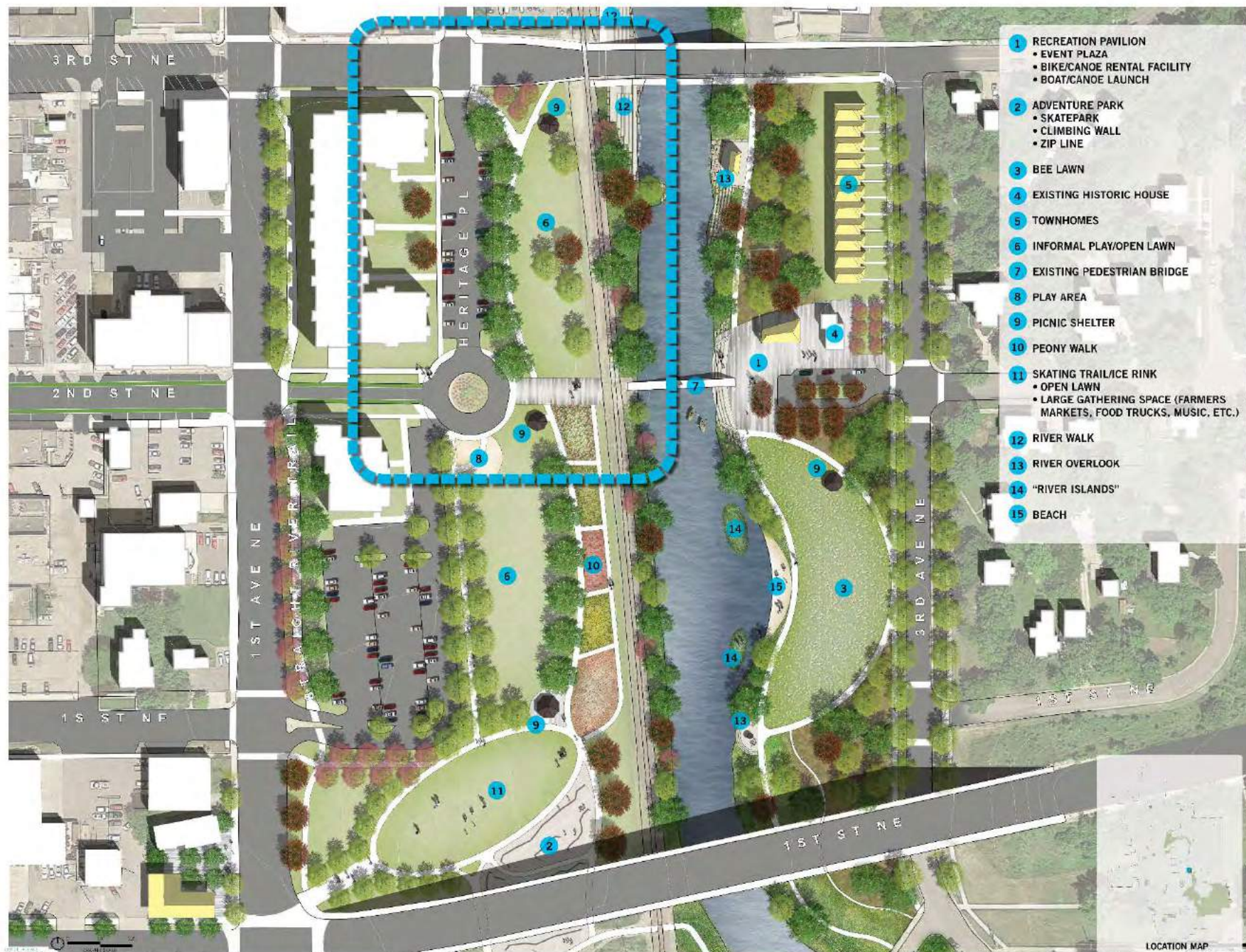
HERITAGE PARK - CONCEPT B

PERKINS+WILL TEAM

11-15-2018



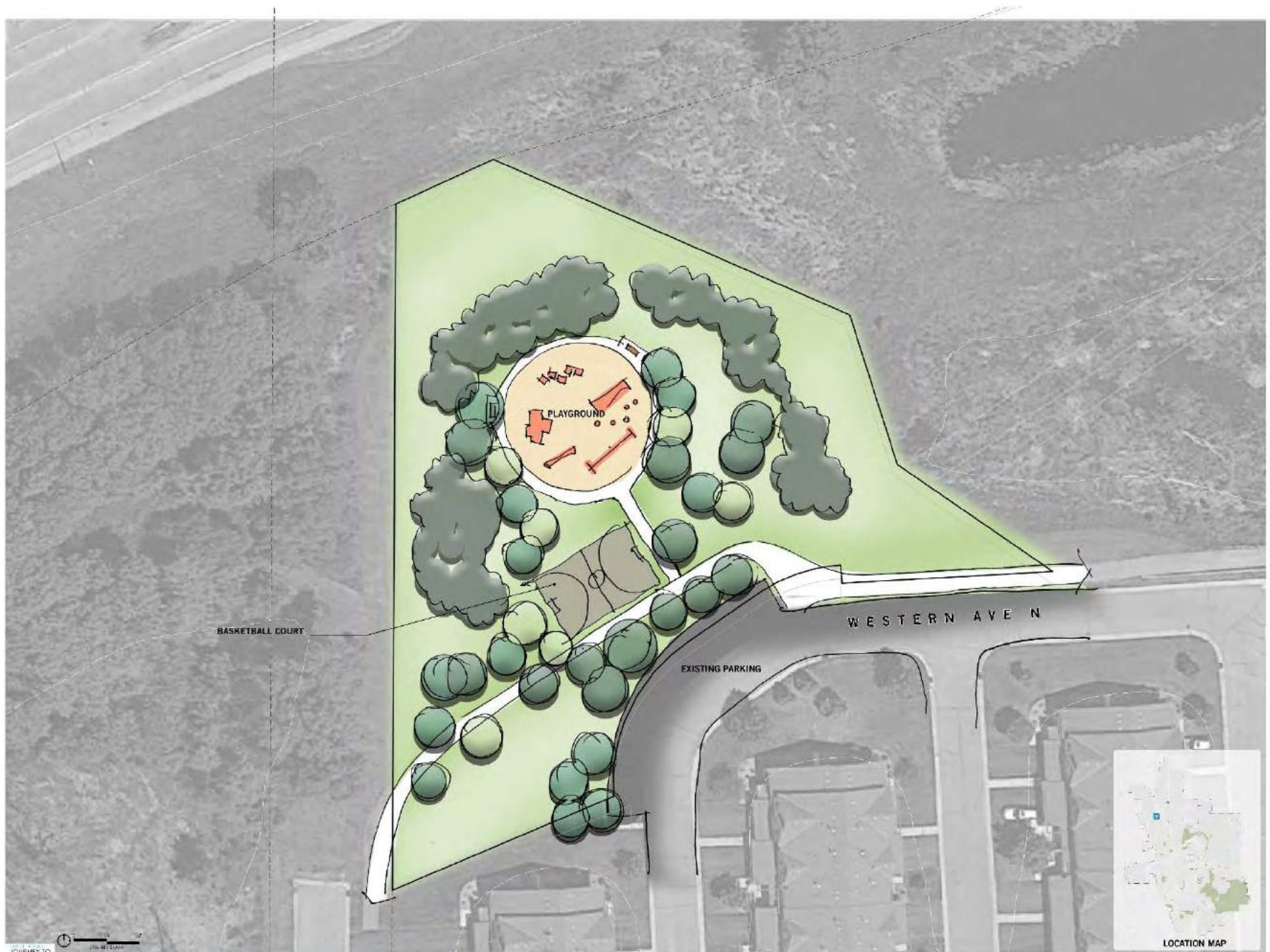




RIVER RIDGE PARK CONCEPT

PERKINS+WILL TEAM

11-15-2018





THE VILLAGE PARK - CONCEPT B

PERKINS+WILL TEAM

11-15-2018





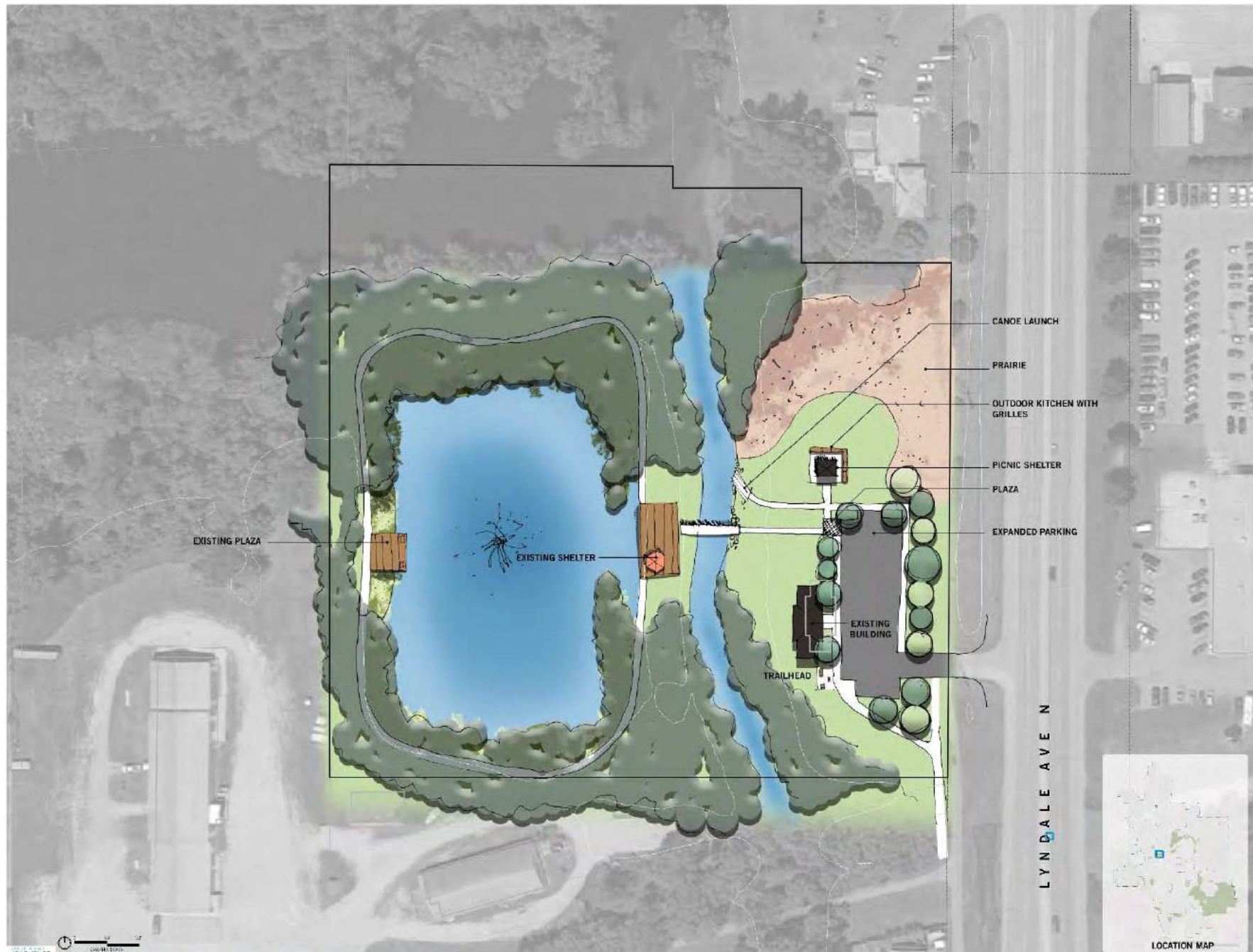
LOCATION MAP



WASHINGTON CENTER PARK CONCEPT

PERKINS+WILL TEAM

11-15-2018



WHITE SANDS PARK - CONCEPT B

PERKINS+WILL TEAM

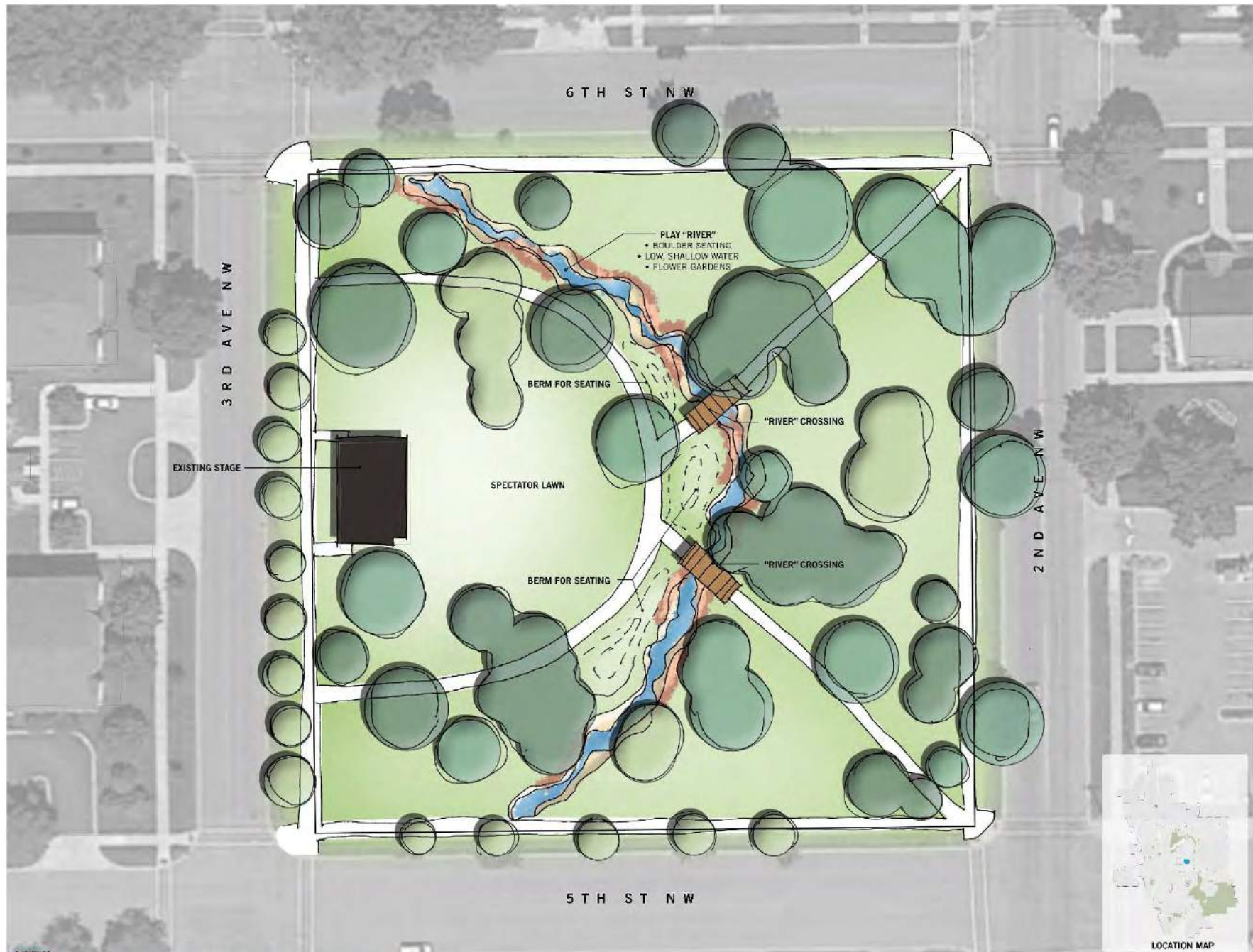
11-15-2018



A photograph of a community park. In the center, there is a colorful playground with blue slides and red and yellow structures. To the right, there are several wooden picnic tables. The park is surrounded by large, mature trees with green foliage. The ground is covered in grass.

REVIEW COMMUNITY PARK CONCEPTS *(5 MIN PER PARK)*







CENTRAL PARK CONCEPT A

PERKINS+WILL TEAM
11.15.2015



CENTRAL PARK CONCEPT B

PERKINS+WILL TEAM
11.15.2015

LEGEND

- 1 EXISTING FLEX FIELD
- 2 EXISTING BASEBALL DIAMOND
- 3 EXISTING STORMWATER GARDENS
- 4 PLAY CONTAINER
- 5 PARKING
- 6 PLAZA
- 7 PERGOLA
- 8 POLLINATOR GARDEN
- 9 OPEN LAWN
- 10 TENNIS / PICKLE BALL
- 11 BASKETBALL



- LEGEND**
- 1 EXISTING FLEX FIELD
 - 2 OPEN LAWN
 - 3 EXISTING STORMWATER GARDENS
 - 4 PLAY CONTAINER
 - 5 PARKING
 - 6 PUBLIC ART
 - 7 NINJA WARRIOR COURSE
 - 8 PRAIRIE WITH NATURE WALK
 - 9 OPEN LAWN
 - 10 TENNIS / PICKLE BALL
 - 11 BASKETBALL



MAPLE LAWN PARK - CONCEPT B





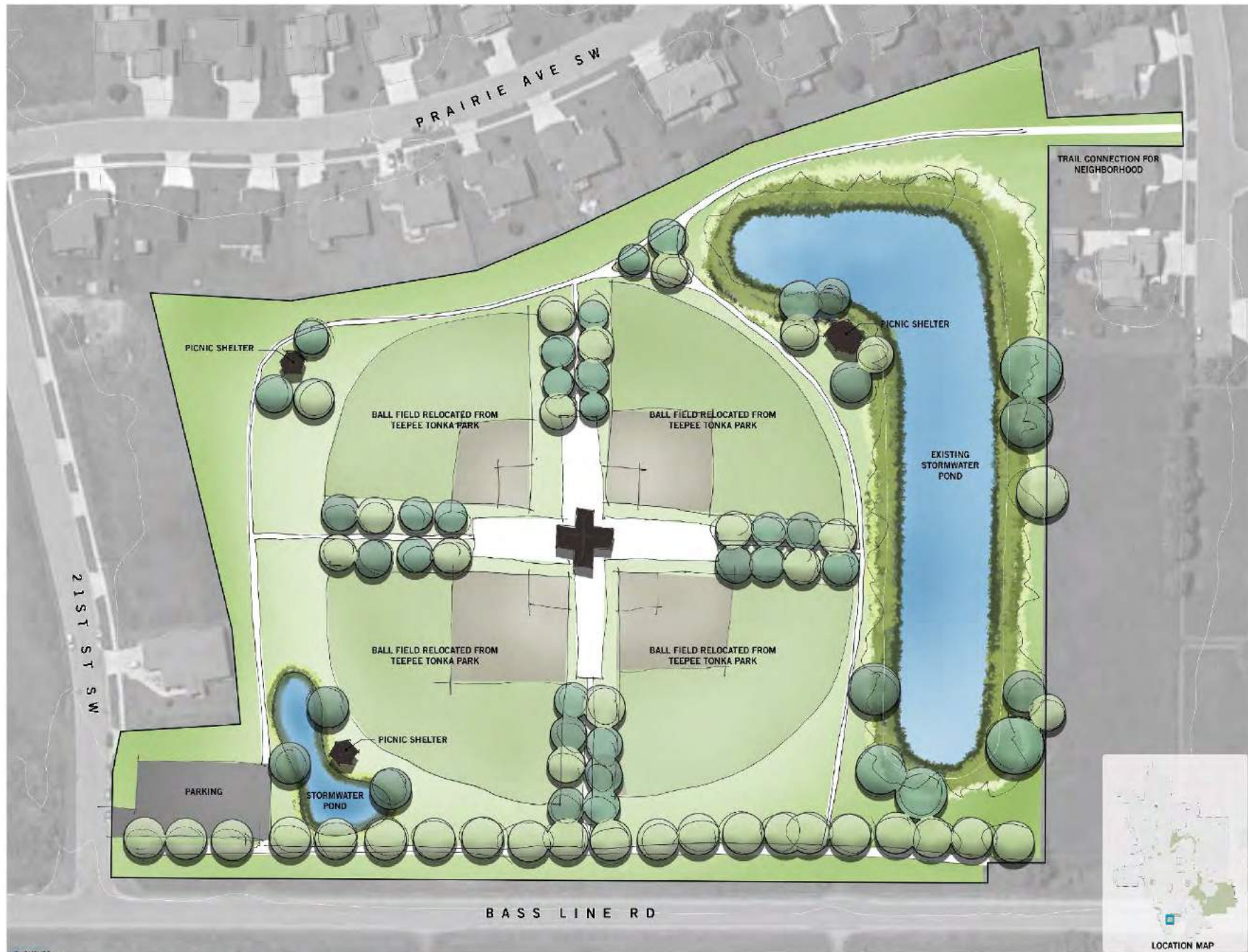


NORTH ALEXANDER PARK - CONCEPT B

PERKINS+WILL TEAM

11-15-2018













SOUTH ALEXANDER PARK - CONCEPT A

PERKINS+WILL TEAM

11-15-2018



SOUTH ALEXANDER PARK - CONCEPT B

PERKINS+WILL TEAM

11-15-2018









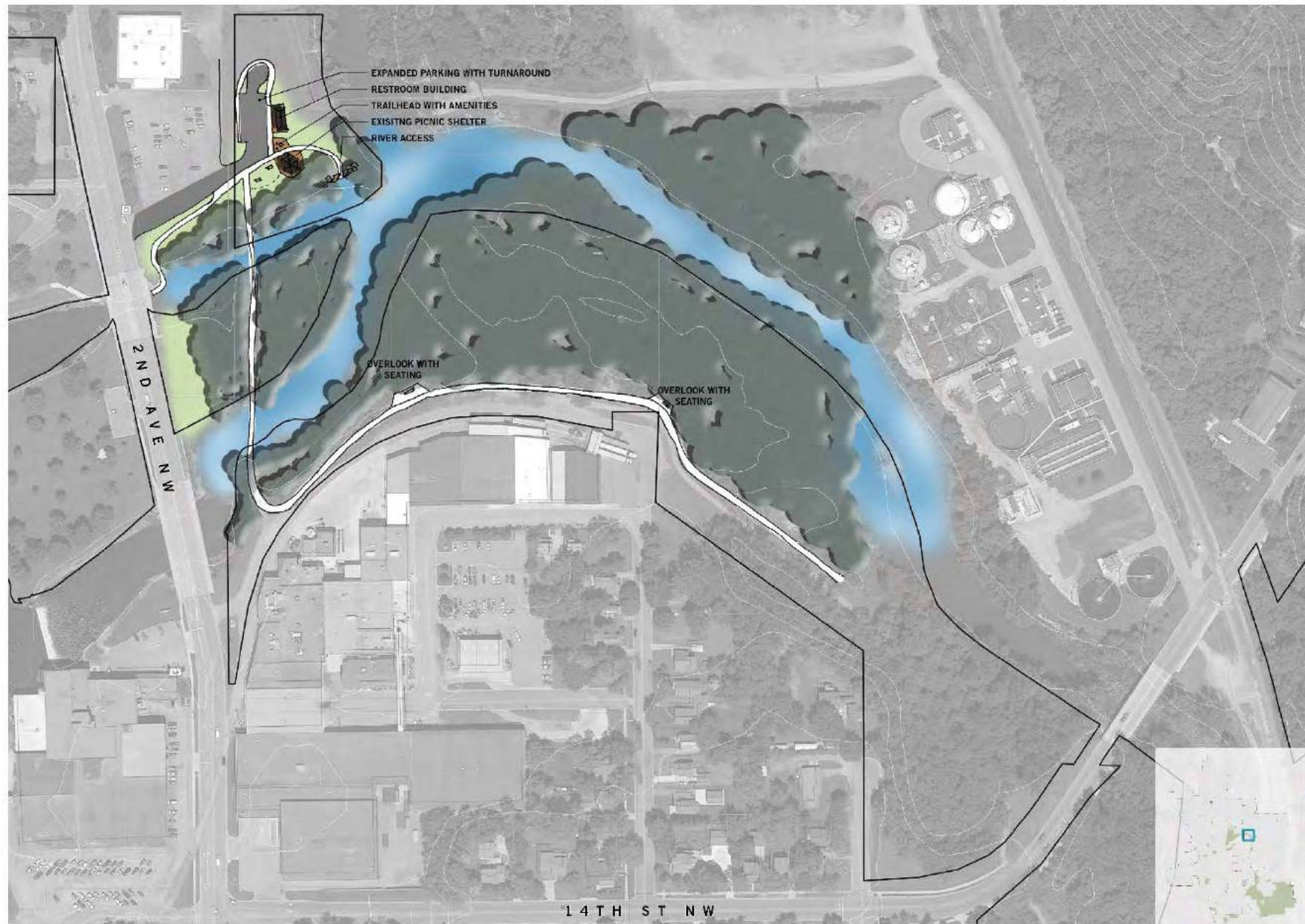
TEEPEE TONKA PARK - CONCEPT C

LEGEND

- 1 ELEVATED YURT CAMPSITE WITH DECK
- 2 CAR/TENT CAMPSITE WITH SMALL PICNIC AREA
- 3 COMMUNITY PICNIC SHELTER
- 4 BEACH
- 5 PLAYGROUND
- 6 PARKING
- 7 NATURE PLAY
- 8 STORMWATER
- 9 PRAIRIE







TWO RIVERS PARK CONCEPT

LOCATION MAP

PERKINS+WILL TEAM

11-15-2018

LEGEND

- 1 PLAYGROUND WITH BERM SEATING
- 2 SPLASH PAD
- 3 LARGE GROUP SEATING
- 4 IMPROVED PARKING
- 5 DOG PARK
- 6 EXISTING BALLFIELD
- 7 RAMP AND STAIRS
- 8 GREAT LAWN
- 8 COMMUNITY GARDEN
- 9 PICNIC SHELTER
- 10 SHELTER WITH RESTROOM & CONCESSIONS
- 11 PICKLEBALL/TENNIS COURTS
- 12 DISC GOLF
- 13 STORMWATER
- 14 SOCCER
- 15 TREE HOUSE
- 16 RELOCATED SIGN AND GARDENS



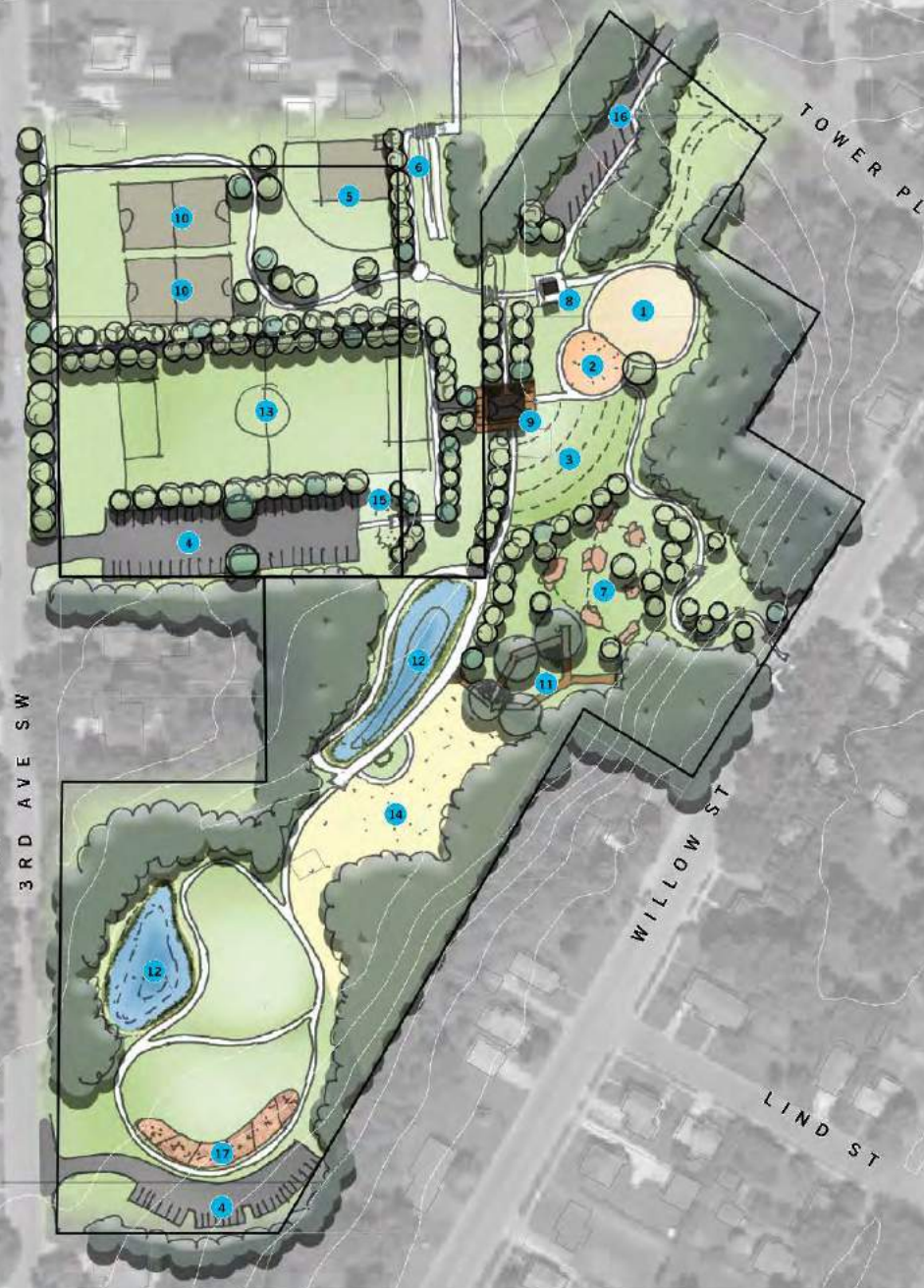
WAPACUTA & GARFIELD PARK - CONCEPT A

PERKINS+WILL TEAM

11-15-2018

LEGEND

- 1 PLAYGROUND WITH BERM SEATING
- 2 SPLASH PAD
- 3 AMPHITHEATER SEATING
- 4 IMPROVED PARKING
- 5 EXISTING BALLFIELD
- 6 RAMP AND STAIRS
- 7 TEENAGE HANGOUT
- 8 COMMUNITY GARDEN
- 9 PICNIC SHELTER
- 10 SHELTER WITH RESTROOM & CONCESSIONS
- 11 BASKETBALL COURTS
- 12 TREE CANOPY WALK
- 13 STORMWATER
- 14 SOCCER
- 15 BEE LAWN
- 16 RELOCATED SIGN AND GARDENS
- 17 RELOCATED ENTRANCE DRIVE AND PARKING
- 18 DEMONSTRATION GARDENS



- LEGEND**
- 1 PLAYGROUND WITH GYM SEATING
 - 2 SPLASH PAD
 - 3 LARGE GROUP SEATING
 - 4 IMPROVED PARKING
 - 5 DOG PARK
 - 6 EXISTING BALLFIELD
 - 7 RAMP AND STAIRS
 - 8 GREAT LAWN
 - 9 COMMUNITY GARDEN
 - 10 PICNIC SHELTER
 - 11 SHELTER WITH RESTROOM & CONCESSIONS
 - 12 PICKLEBALL/TENNIS COURTS
 - 13 DISC GOLF
 - 14 STORMWATER
 - 15 SOCCER
 - 16 TREE HOUSE
 - 17 RELOCATED SIGN AND GARDENS



WAPACUTA & GARFIELD PARK - CONCEPT A

PERKINS-WILL TEAM
11-15-2018

- LEGEND**
- 1 PLAYGROUND WITH GYM SEATING
 - 2 SPLASH PAD
 - 3 AMPHITHEATER SEATING
 - 4 IMPROVED PARKING
 - 5 EXISTING BALLFIELD
 - 6 RAMP AND STAIRS
 - 7 TEENAGE HANGOUT
 - 8 COMMUNITY GARDEN
 - 9 PICNIC SHELTER
 - 10 SHELTER WITH RESTROOM & CONCESSIONS
 - 11 BASKETBALL COURTS
 - 12 TREE CANOPY WALK
 - 13 STORMWATER
 - 14 SOCCER
 - 15 BELL LAWN
 - 16 RELOCATED SIGN AND GARDENS
 - 17 RELOCATED ENTRANCE DRIVE AND PARKING
 - 18 DEMONSTRATION GARDENS



WAPACUTA & GARFIELD PARK - CONCEPT B

PERKINS-WILL TEAM
11-15-2018