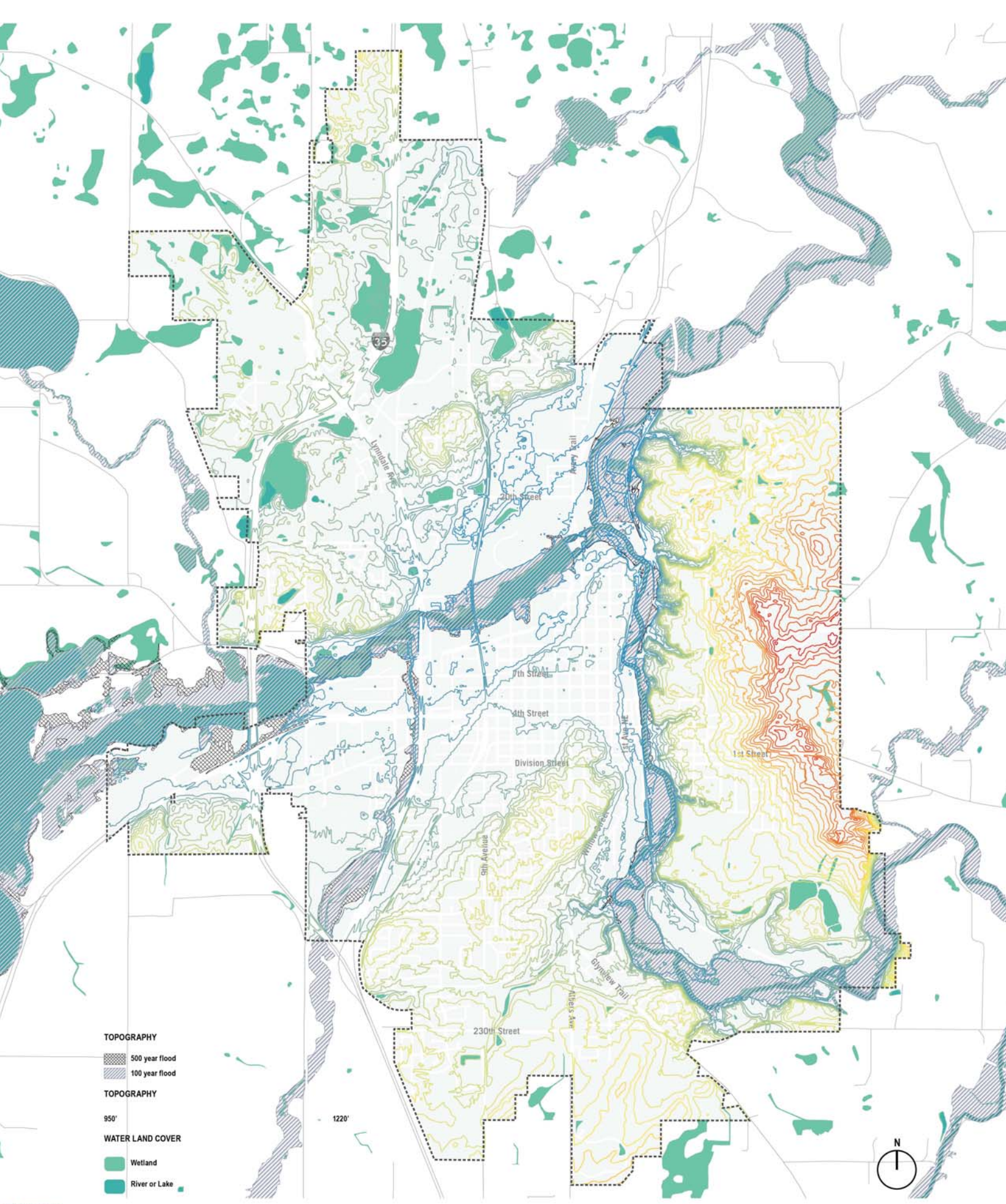


- SINGLE FAMILY RESIDENTIAL
- MULTI-FAMILY RESIDENTIAL
- GENERAL COMMERCIAL
- INDUSTRIAL
- UNDETERMINED
- PARKS, TRAILS, & OPEN SPACE
- AGRICULTURE / MULTI-USE AGRICULTURE / GREENFIELD
- SCHOOLS
- PUBLIC - SEMI PUBLIC
- RIGHT OF WAY



# Existing Land Use



**TOPOGRAPHY**

-  500 year flood
-  100 year flood

**TOPOGRAPHY**

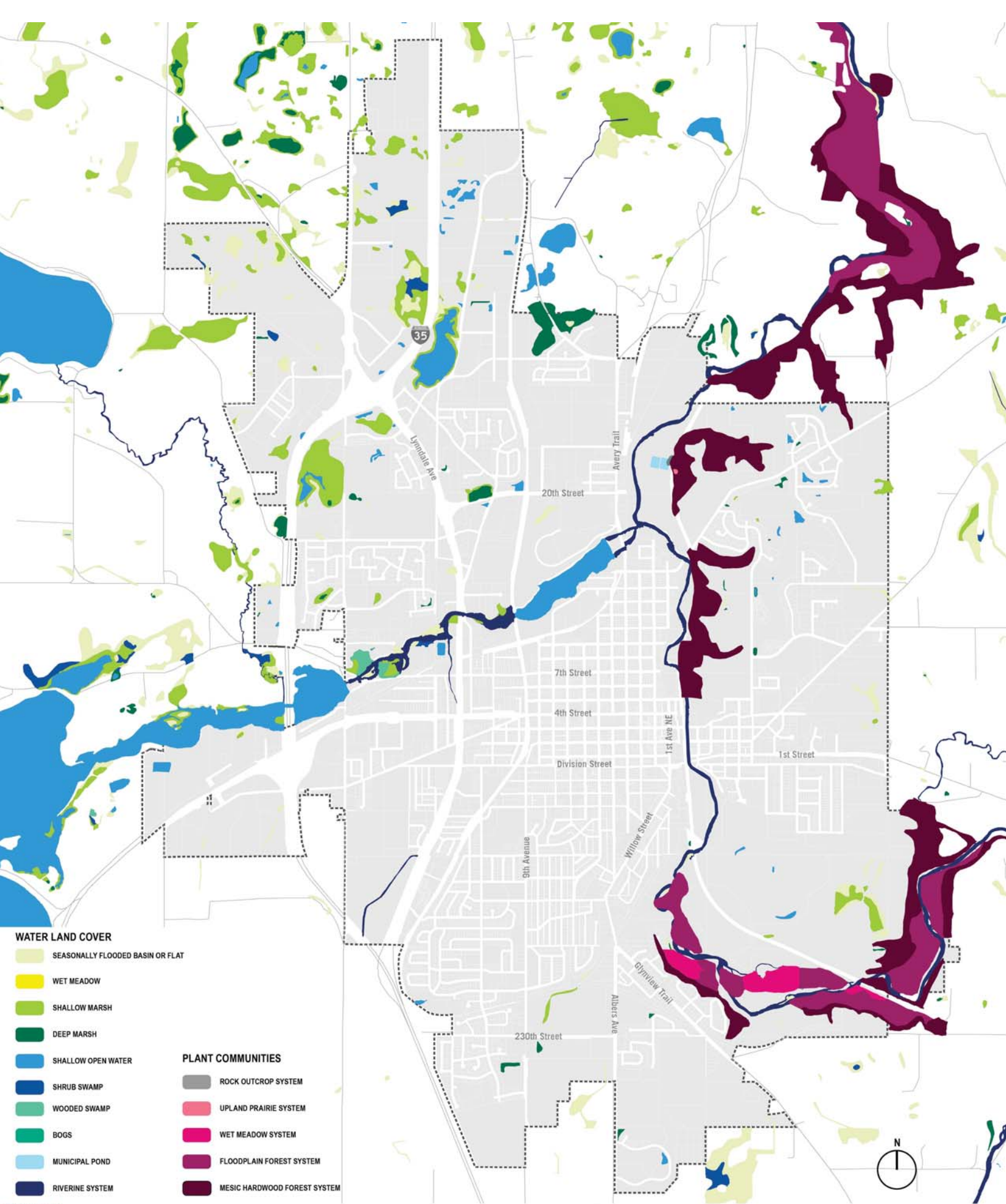
950'

1220'

**WATER LAND COVER**

-  Wetland
-  River or Lake





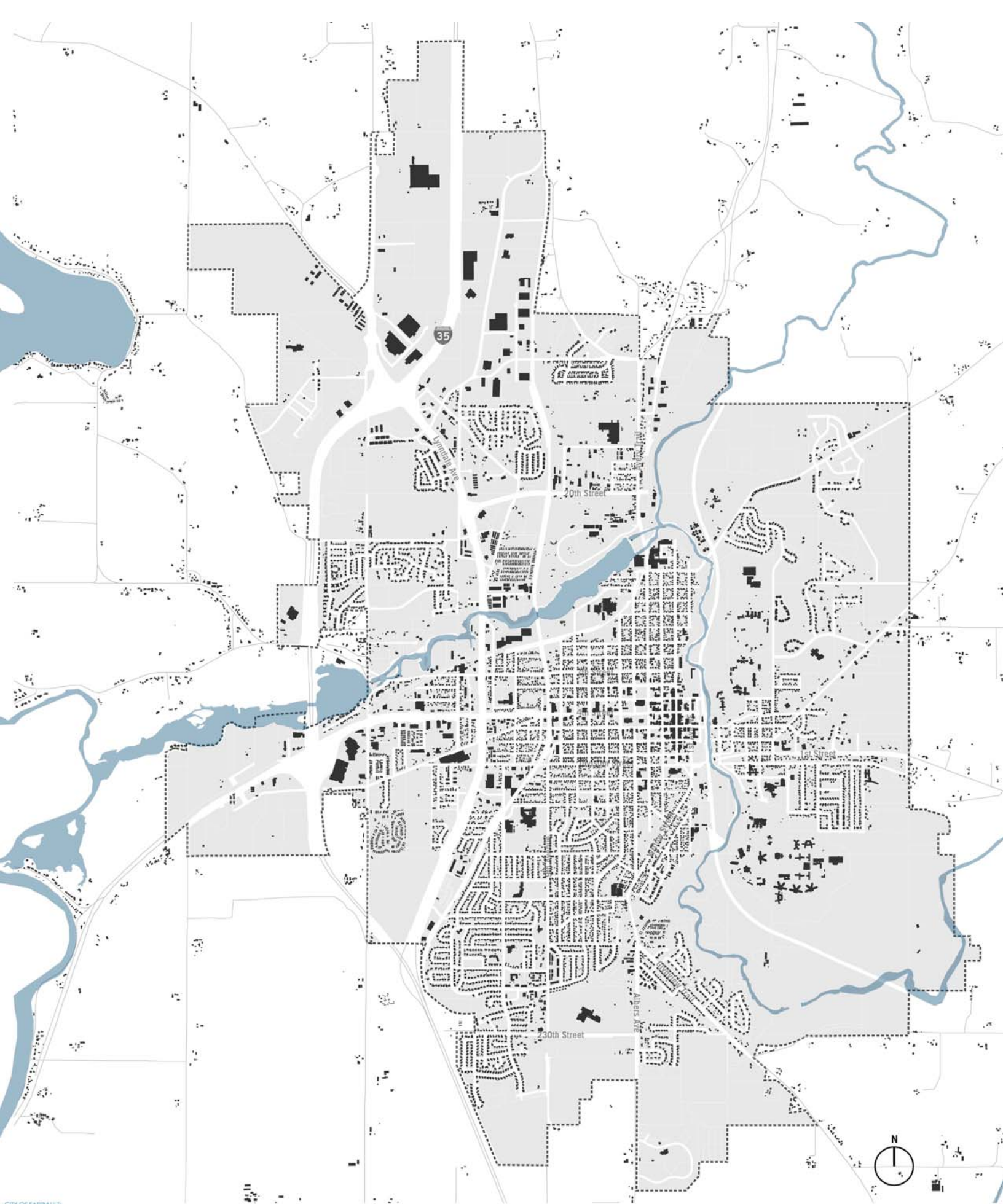
**WATER LAND COVER**

- SEASONALLY FLOODED BASIN OR FLAT
- WET MEADOW
- SHALLOW MARSH
- DEEP MARSH
- SHALLOW OPEN WATER
- SHRUB SWAMP
- WOODED SWAMP
- BOGS
- MUNICIPAL POND
- RIVERINE SYSTEM

**PLANT COMMUNITIES**

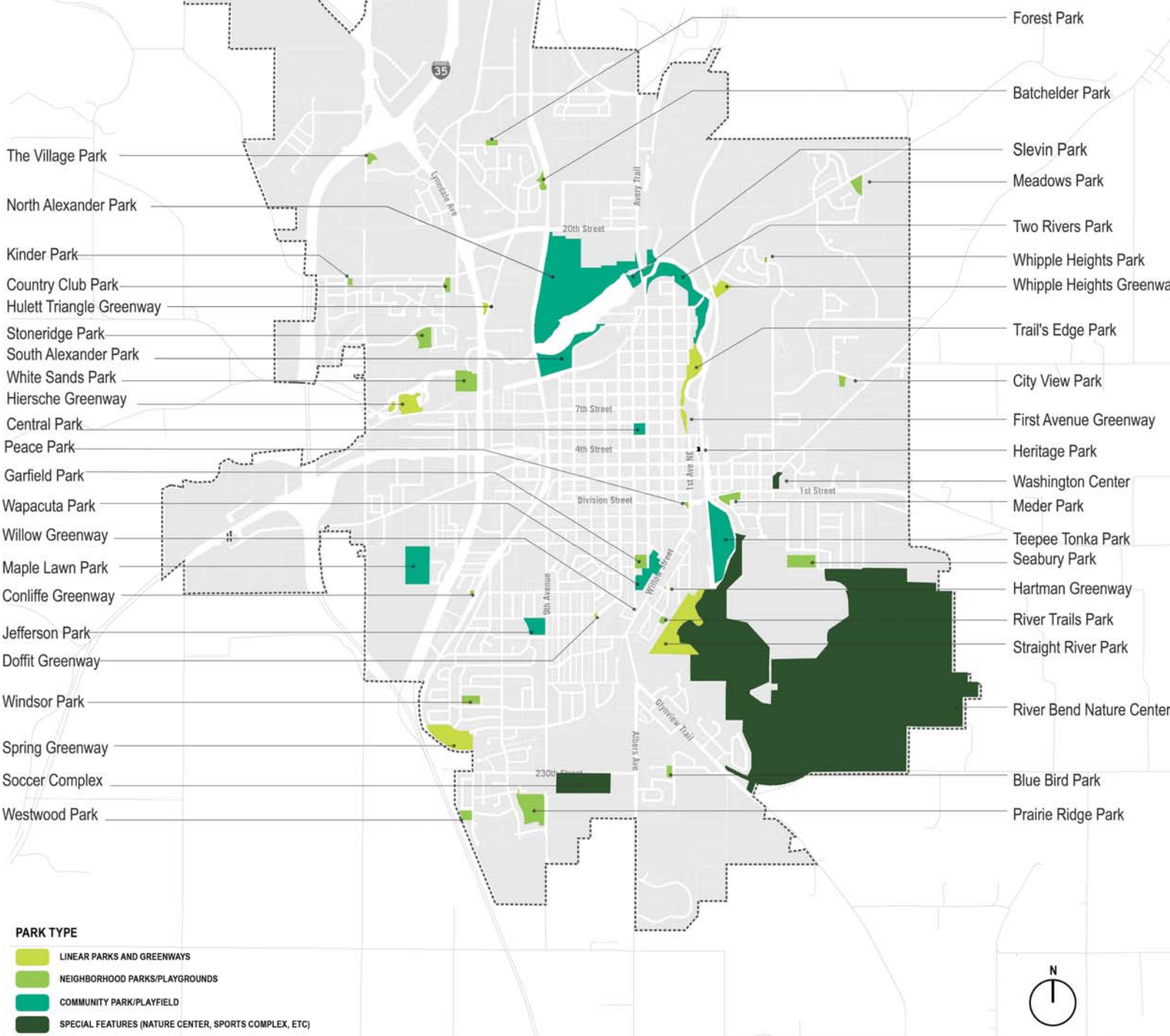
- ROCK OUTCROP SYSTEM
- UPLAND PRAIRIE SYSTEM
- WET MEADOW SYSTEM
- FLOODPLAIN FOREST SYSTEM
- MESIC HARDWOOD FOREST SYSTEM

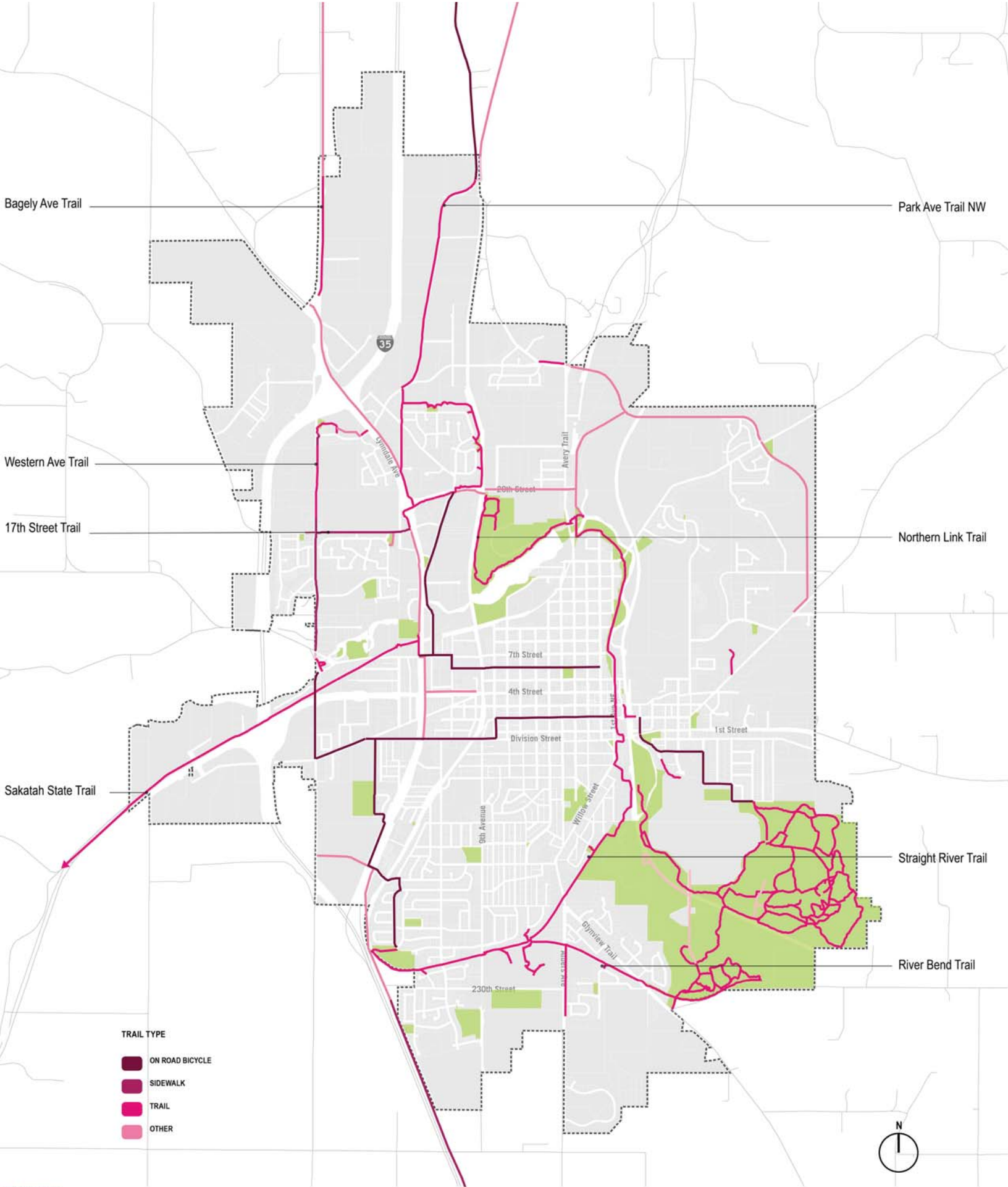




\*Park asset was provided by Fairbault Parks and Recreation Parks Amenity Inventory. Condition assessment is underway.

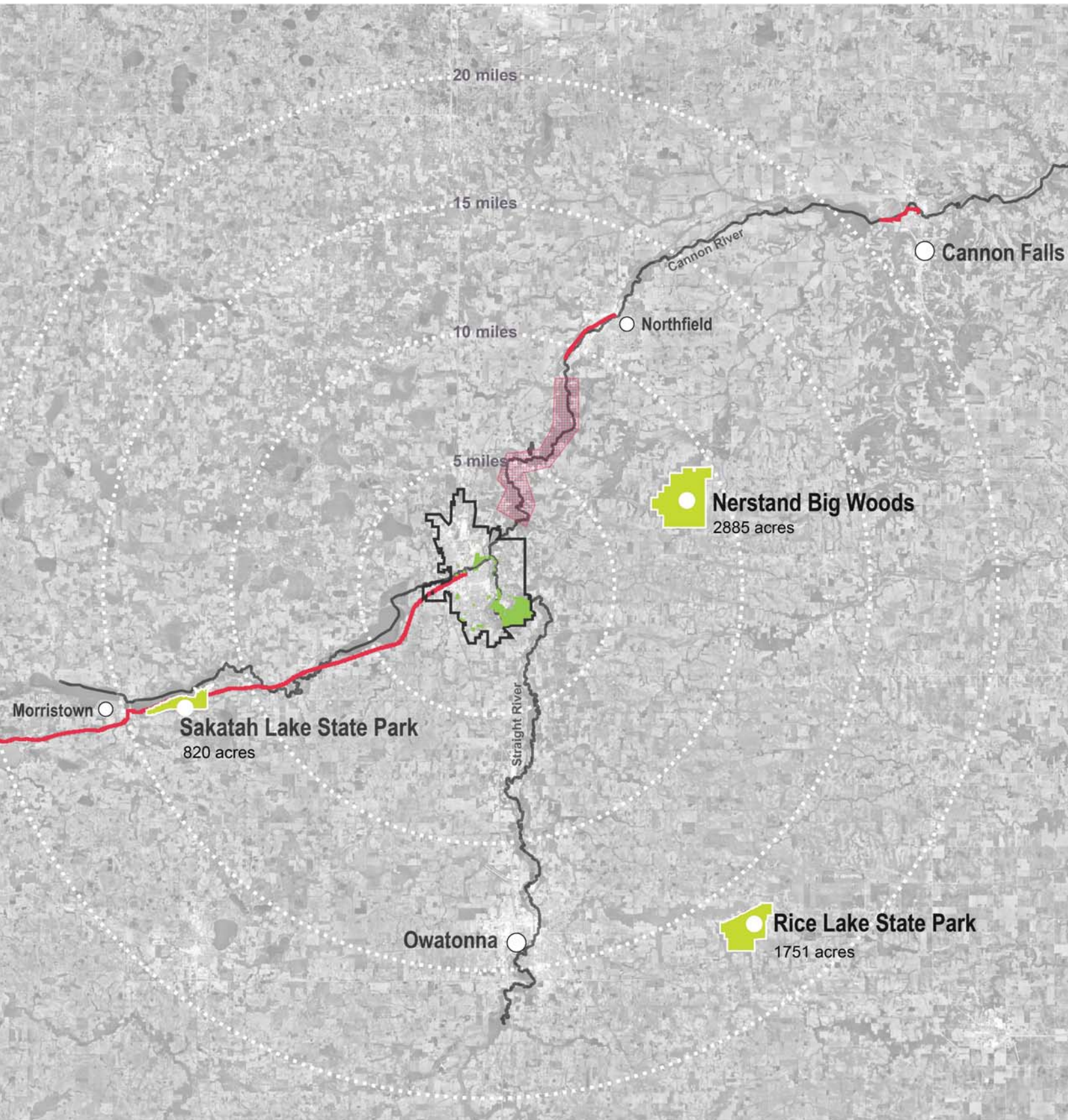
	Area	Acres	Open Space	Play Area	Green Space	Water	Play Structure	Ball Courts	Swimming Pool	Sports Center	Public Storage	Playground	Community Center	Art Center	Library	Health Center	Senior Center	Community Center	Library	Health Center	Senior Center	Community Center	
Community Park/Playfield	Lawrence Park	2.1	x																				
	Maple Glen Park	10.0	x																				
	Forest Park	12.1	x																				
	Whipple Heights Park	11.7	x																				
	Whipple Heights Greenway	13.7																					
	Country Club Park	7.0	x																				
	Lincoln Park	17.0	x																				
	South Alexander Park	17.0	x																				
Linear Park	Lincoln Greenway	17.0																					
	Maple Glen Greenway	10.0																					
	Forest Greenway	12.1																					
	Whipple Heights Greenway	11.7																					
	Country Club Greenway	7.0																					
	Lincoln Greenway	17.0																					
	Maple Glen Greenway	10.0																					
	Forest Greenway	12.1																					
	Whipple Heights Greenway	11.7																					
	Country Club Greenway	7.0																					
	Lincoln Greenway	17.0																					
	Neighborhood Park/Playground	Maple Glen Park	10.0																				
Forest Park		12.1																					
Whipple Heights Park		11.7																					
Country Club Park		7.0																					
Lincoln Park		17.0																					
Maple Glen Park		10.0																					
Forest Park		12.1																					
Whipple Heights Park		11.7																					
Country Club Park		7.0																					
Lincoln Park		17.0																					
Maple Glen Park		10.0																					
Forest Park		12.1																					
Whipple Heights Park		11.7																					
Special Features	Lincoln Center Complex	27.0																					
	Country Club Center	7.0																					
	Lincoln Center	17.0																					
	Country Club Center	7.0																					
	Lincoln Center	17.0																					
	Country Club Center	7.0																					
	Lincoln Center	17.0																					
Hennepin County Parks	Wild Lake Park	10.0																					
	Long Lake Park	7.0																					

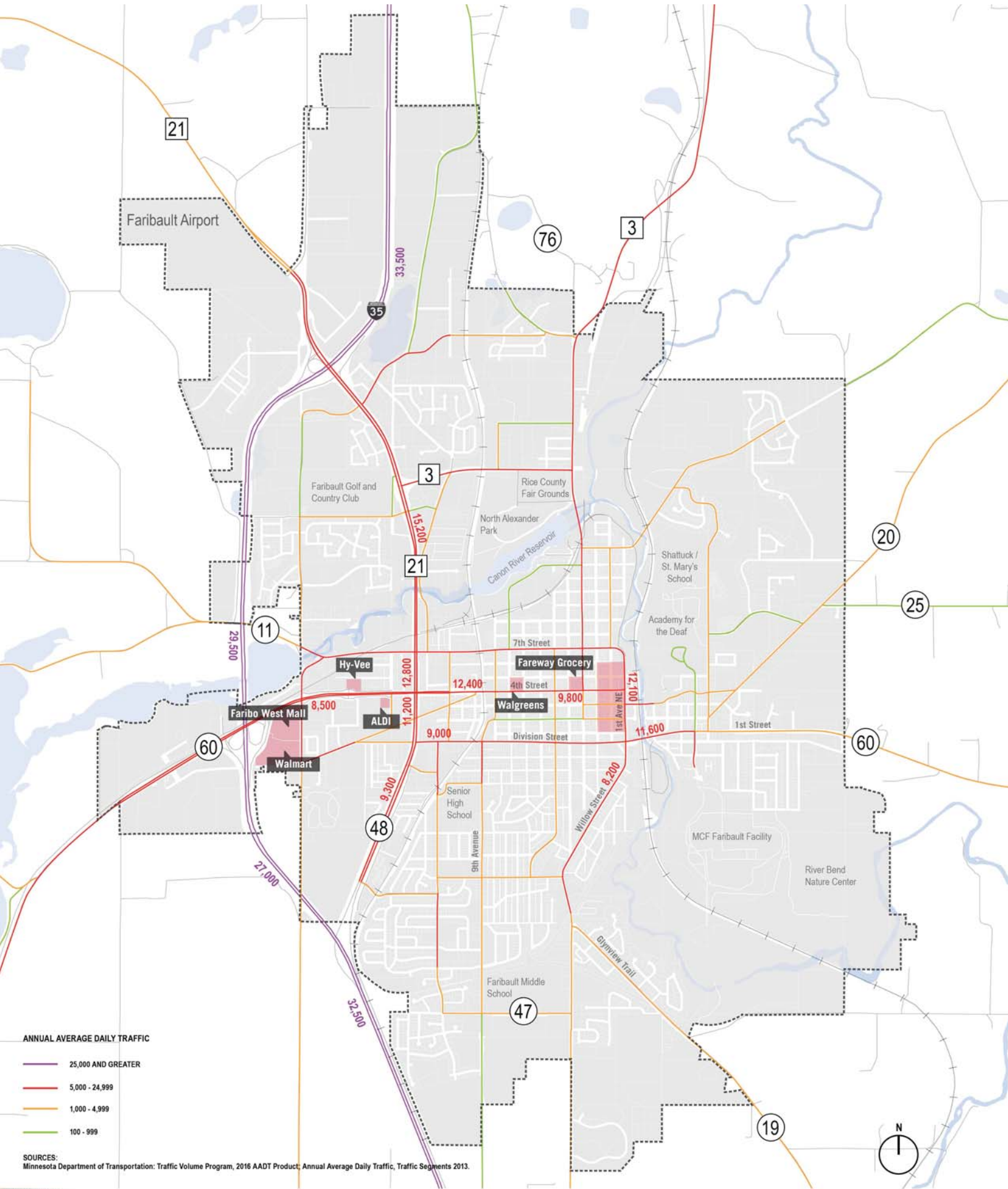




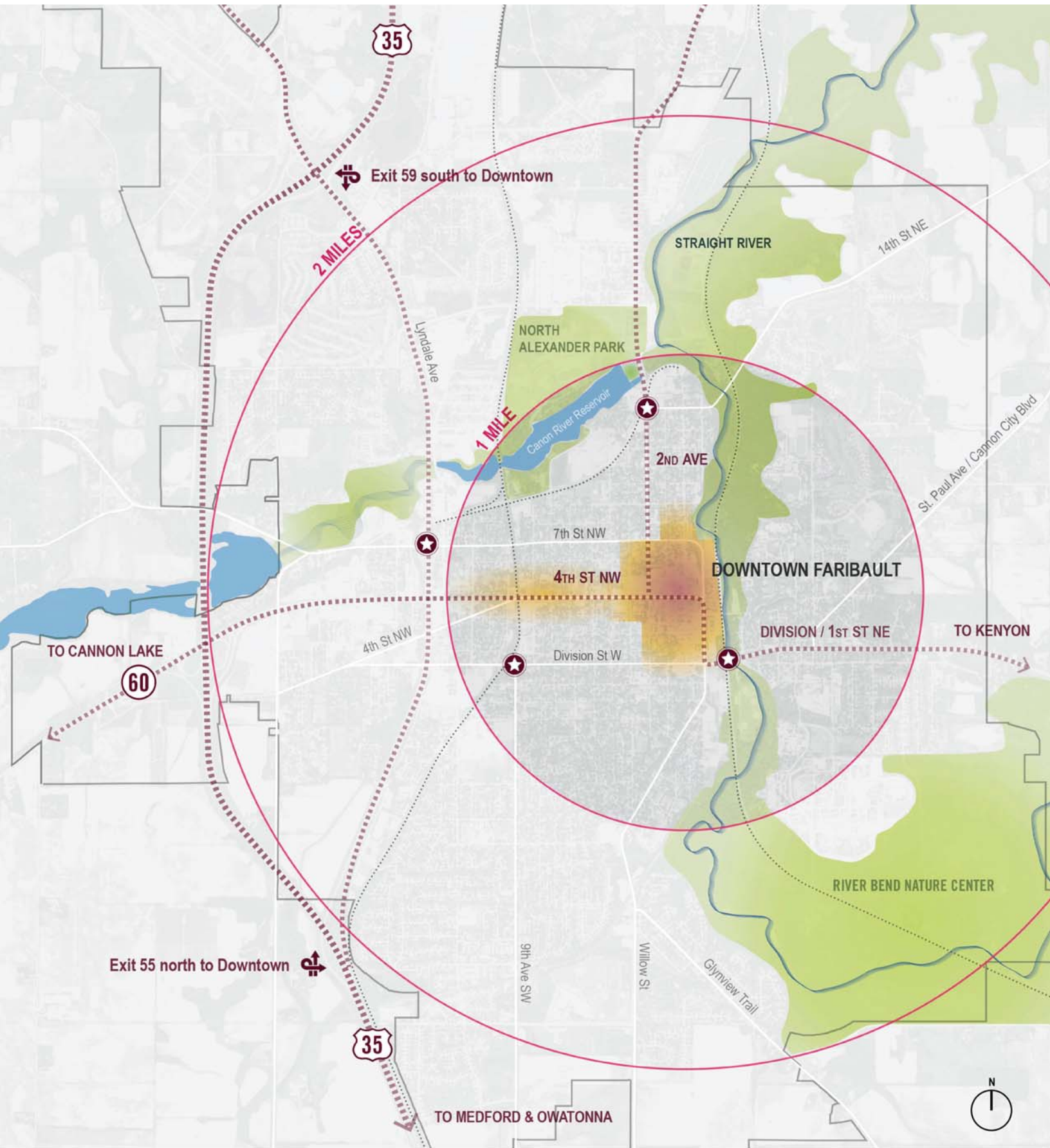
- TRAIL TYPE**
- ON ROAD BICYCLE
  - SIDEWALK
  - TRAIL
  - OTHER









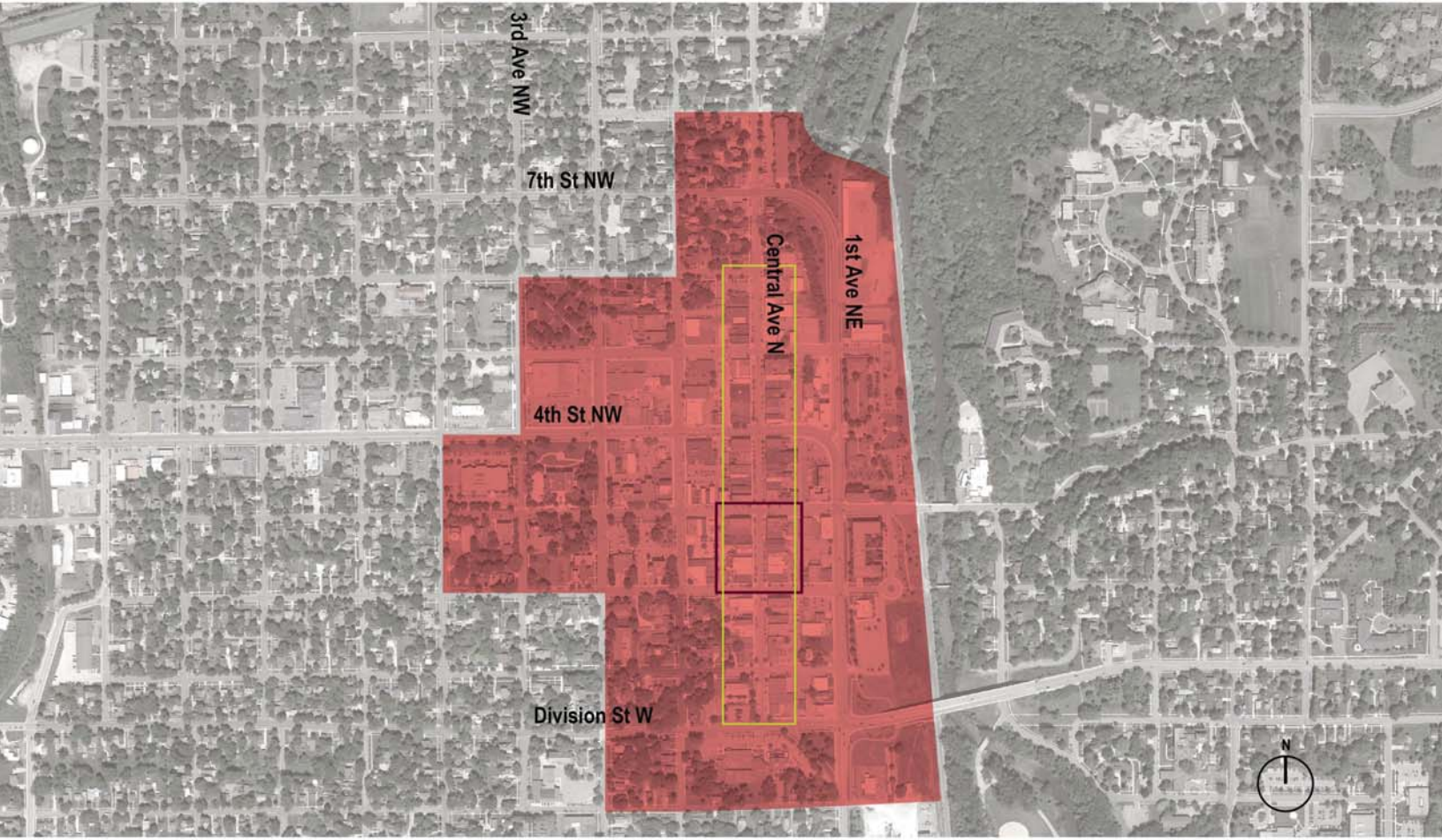
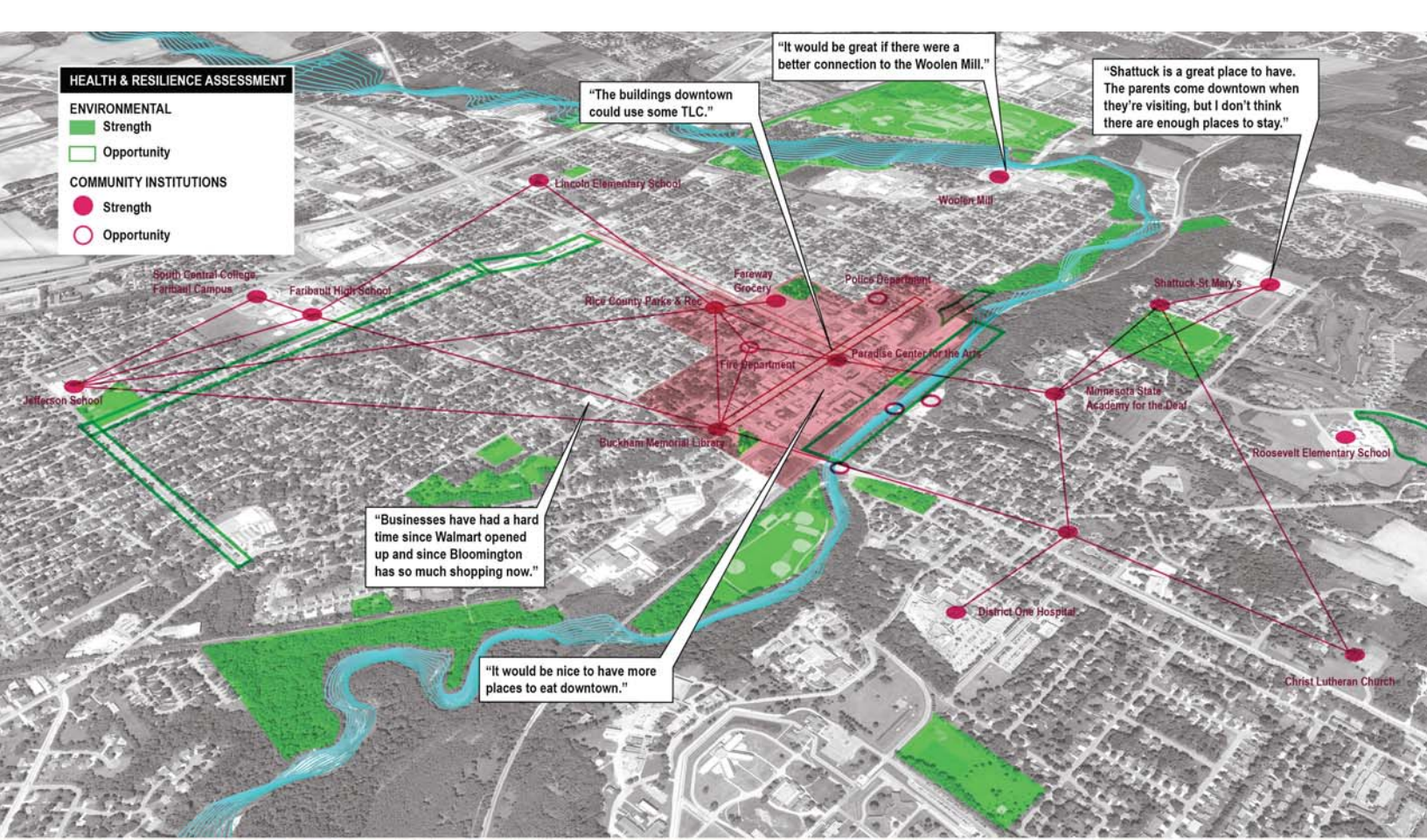


..... Rail

★ Gateways to Downtown Faribault

—— Municipal boundary

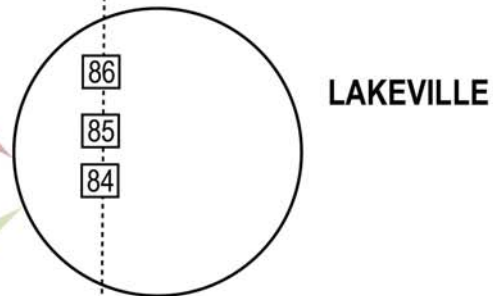
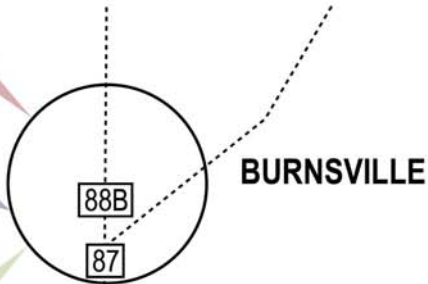
0 0.5 1 Mile



**BIG BOX**  
 Target      Costco      Kohl's  
 Walmart    At Home    TJ Maxx  
 Best Buy    Home Depot

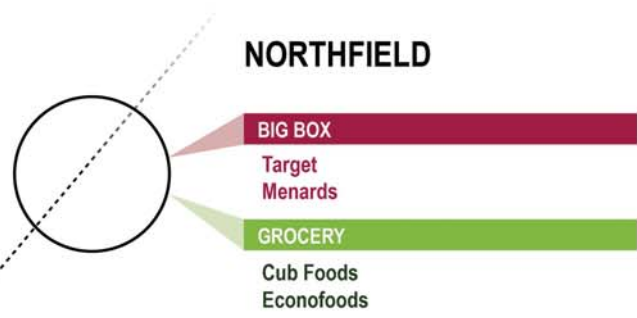
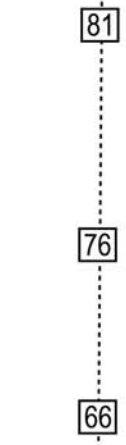
**REGIONAL MALL**  
 Macy's  
 JCPenney  
 Dicks Sporting Goods

**GROCERY**  
 Cub Foods



**BIG BOX**  
 Walmart  
 Target  
 Marshalls

**GROCERY**  
 Cub Foods



**BIG BOX**  
 Walmart  
 JCPenney

**GROCERY**  
 Hy-Vee  
 Fareway Grocery  
 Aldi



48 MEDFORD OUTLET CENTER

**BIG BOX**  
 Kohl's      Target  
 Walmart    Mills Fleet Farm  
 Lowe's

**BIG BOX**  
 Cash Wise Foods  
 Aldi  
 Hy-Vee

