

DOFFITT GREENWAY



LOCATION : 900 4th Avenue SW

SIZE : 0.16 acres

CLASSIFICATION : Linear Park

REC CENTER : No

SCHOOL CONNECTIONS : None

CURRENT PROJECTS: None



CONTEXT

Doffitt Greenway is located in the southern half of Faribault in a single family residential neighborhood.

CURRENT CONDITIONS AND CONCERNS

There are currently no amenities in this greenway.

PARK FACILITY CONDITIONS (SITE VERIFIED)

● GOOD ● FAIR ● POOR

SEASONAL AMENITIES

● HIGH USE ● LIMITED ● LOW USE

● SPRING ● FALL

● SUMMER ● WINTER

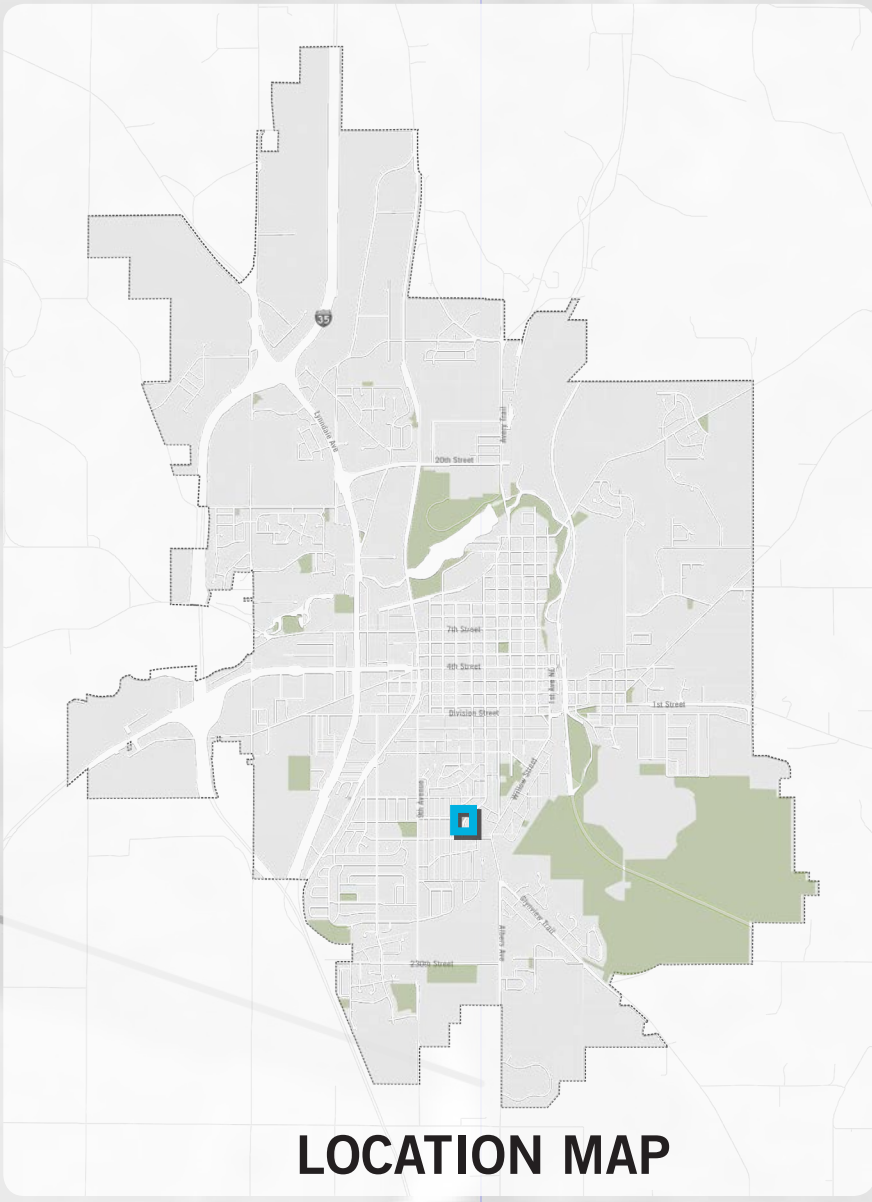
LEGEND

- 1 SEATING
- 2 EXISTING TREES
- 3 POLLINATOR LAWN
- 4 TURF
- 5 WALKWAY
- 6 PUBLIC ART

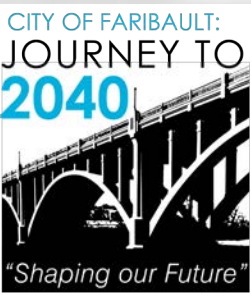
6TH AVE SW

9TH ST SW

4TH AVE SW



LOCATION MAP



DOFFITT GREENWAY MASTER PLAN

FIRST AVENUE GREENWAY



LOCATION : 500 1st Avenue NE

SIZE : 1.60 acres

CLASSIFICATION : Linear Park

REC CENTER : No

SCHOOL CONNECTIONS : None

CURRENT PROJECTS: None



CONTEXT

This greenway is located on the north end of the Downtown and adjacent to the old public works building. It has views of the Straight River and is across the street from the Straight River Trail.

CURRENT CONDITIONS AND CONCERNS

There are currently no amenities in this greenway.

PARK FACILITY CONDITIONS (SITE VERIFIED)

● GOOD ● FAIR ● POOR

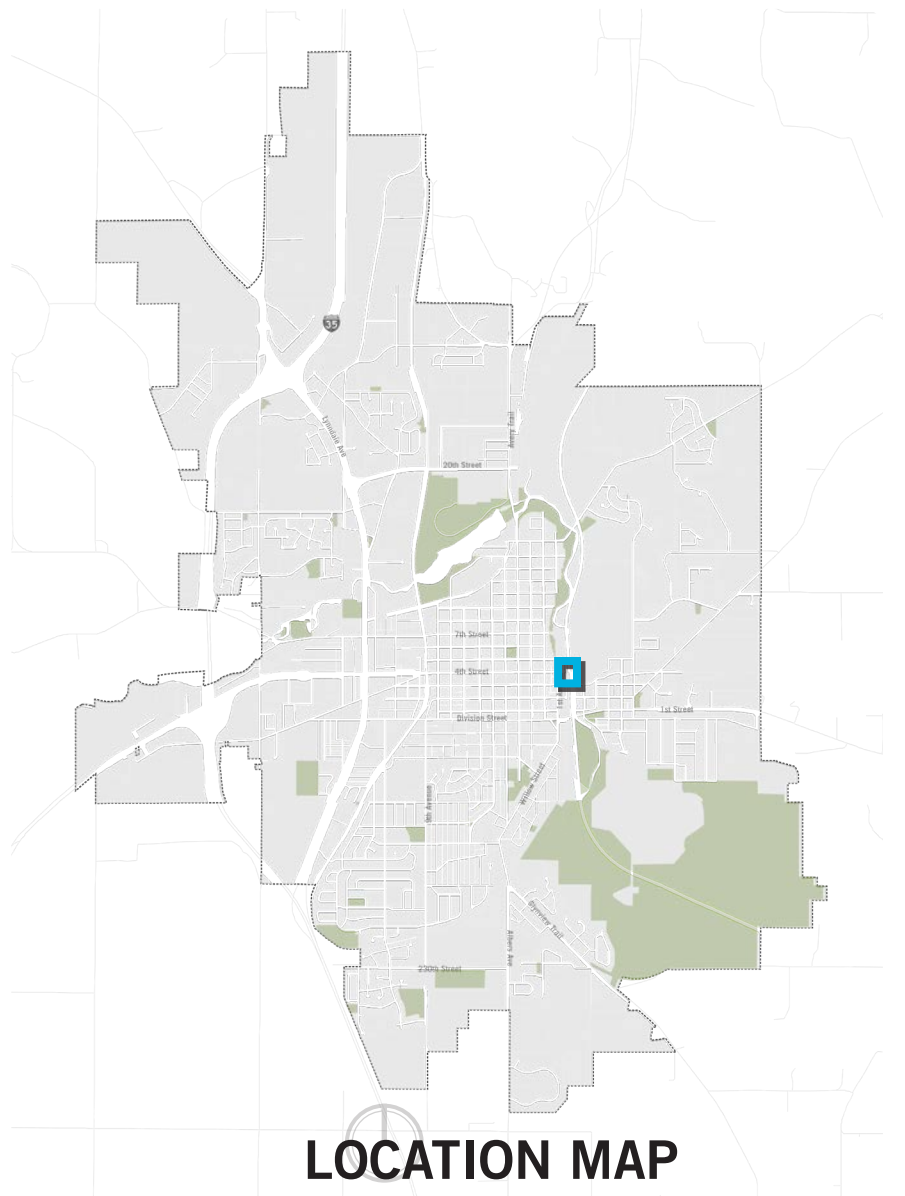
● FLOWER GARDEN

SEASONAL AMENITIES

● HIGH USE ● LIMITED ● LOW USE

● SPRING ● FALL

● SUMMER ● WINTER



HARTMAN PARK



LOCATION : 100 Lind St

SIZE : 0.25 acres

CLASSIFICATION : Linear Park

REC CENTER : No

SCHOOL CONNECTIONS : None

CURRENT PROJECTS: None



CONTEXT

Hartman Greenway is located on the southeast side of Faribault. It is within walking distance from the Straight River State Trail.

CURRENT CONDITIONS AND CONCERNS

There are currently no amenities in this greenway.

PARK FACILITY CONDITIONS (SITE VERIFIED)

● GOOD ● FAIR ● POOR

SEASONAL AMENITIES

● HIGH USE ● LIMITED ● LOW USE

● SPRING ● FALL

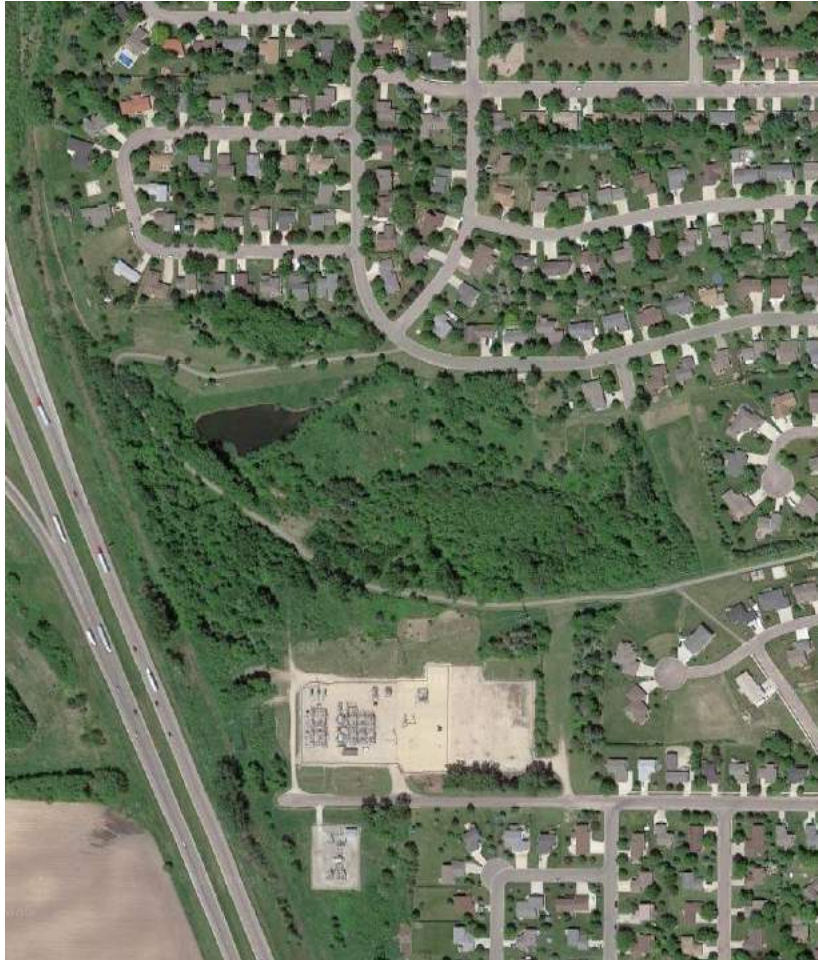
● SUMMER ● WINTER

LEGEND

- 1 EXISTING TREE
- 2 BEE LAWN
- 3 SEATING
- 4 WALKWAY
- 5 TURF
- 6 RAISED GARDEN BEDS



SPRING PARK & GREENWAY



LOCATION : 1701 Springwood Lane

SIZE : 14.8 acres

CLASSIFICATION : Linear Park

REC CENTER : No

SCHOOL CONNECTIONS : None

CURRENT PROJECTS: None



CONTEXT

This nature based park is located on the east side of Highway 35, on the south side of Faribault. It serves as an amenity for a single family residential neighborhood.

CURRENT CONDITIONS AND CONCERNS

The trails are well maintained but are in need of repair in some locations. Much of the nature area is in good condition.

PARK FACILITY CONDITIONS (SITE VERIFIED)

● GOOD ● FAIR ● POOR

● TRAILS

● NATURE AREAS

SEASONAL AMENITIES

● HIGH USE ● LIMITED ● LOW USE

● SPRING

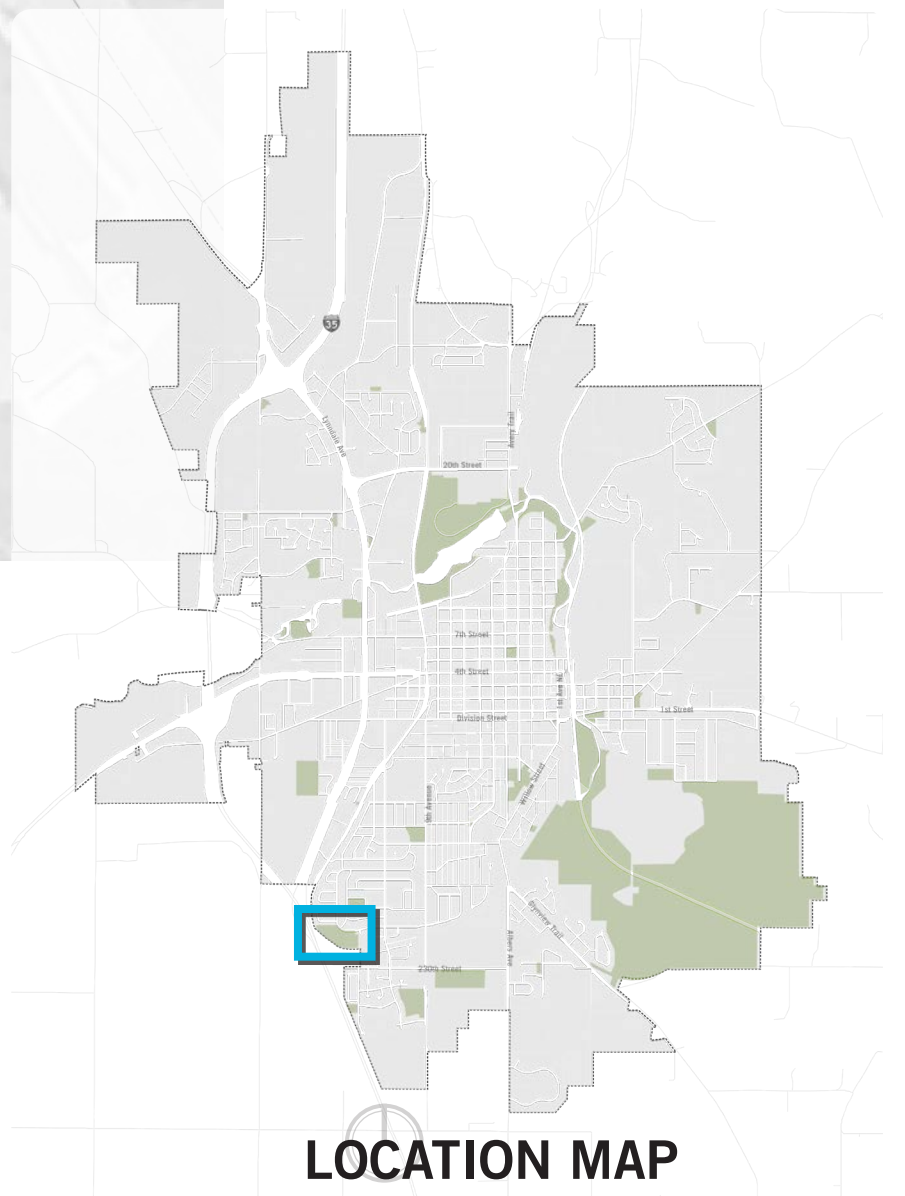
● FALL

● SUMMER

● WINTER

LEGEND

- 1 EXISTING SEATING
- 2 SHELTER WITH FIRE PIT
- 3 SKATING POND
- 4 OUTDOOR CLASSROOM/NATURE PLAY
- 5 INTERPRETIVE SIGNAGE



STRAIGHT RIVER PARK



LOCATION : 801 Short Avenue

SIZE : 28.7 acres

CLASSIFICATION : Linear Park

REC CENTER : No

SCHOOL CONNECTIONS : None

CURRENT PROJECTS: None



CONTEXT

This nature based park is located just south of Teepee Tonka Park and northwest of River Bend Nature Center. It has beautiful views of the Straight River and unique nature trails that wind throughout the park. The Straight River Trail winds through the park as well.

CURRENT CONDITIONS AND CONCERNS

The trails are well maintained but need repair in some locations.

PARK FACILITY CONDITIONS (SITE VERIFIED)

● GOOD ● FAIR ● POOR

● TRAILS

● RIVER/PONDS

SEASONAL AMENITIES

● HIGH USE ● LIMITED ● LOW USE

● SPRING

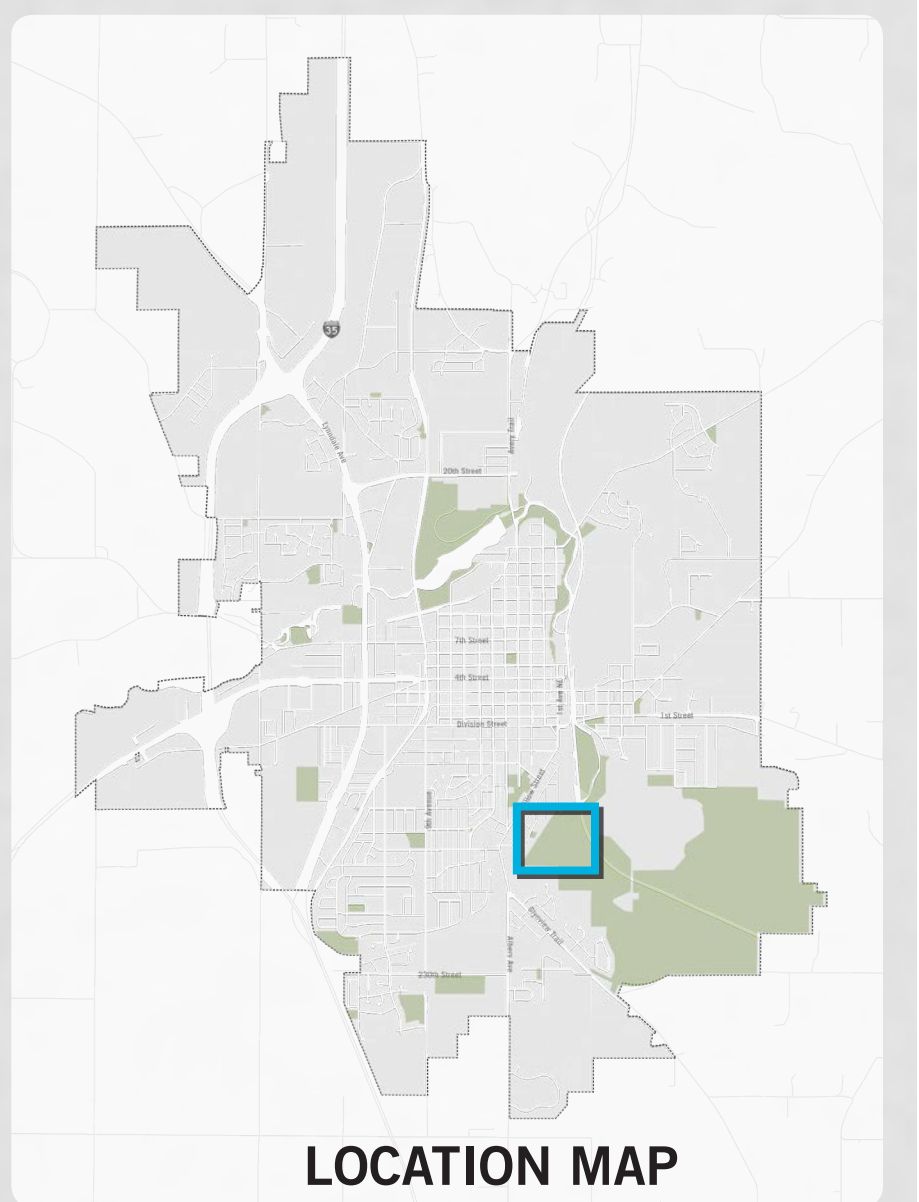
● FALL

● SUMMER

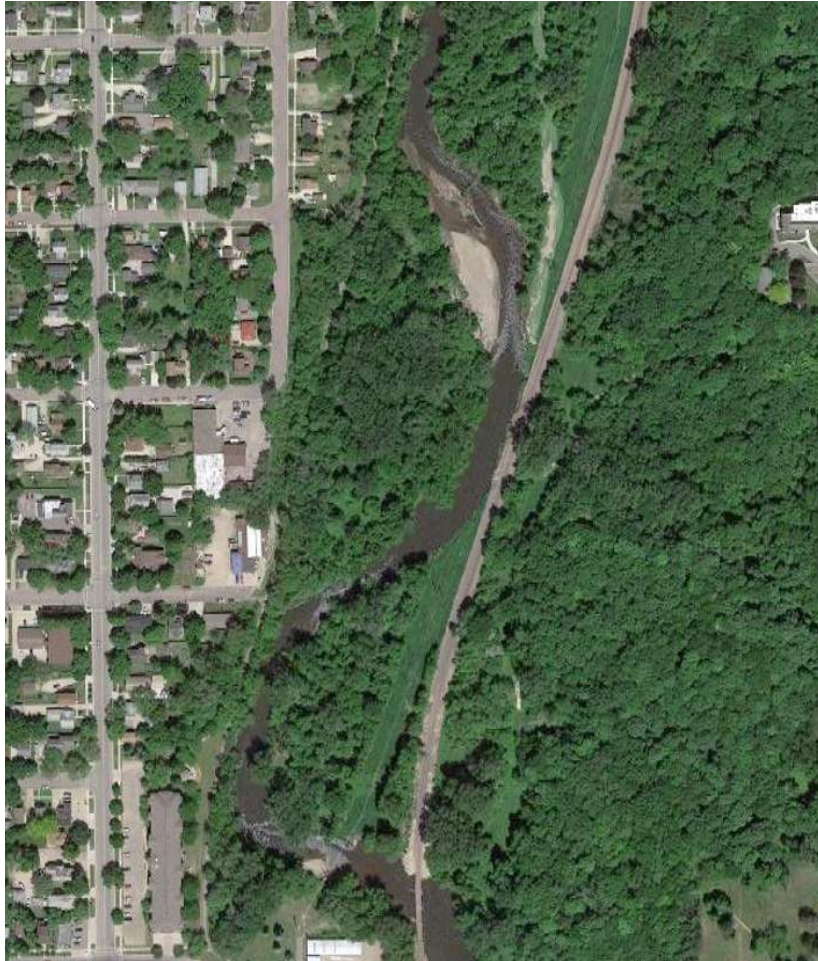
● WINTER

LEGEND

- 1 CANOE LANDING
- 2 OPEN LAWN/PICNIC SPACE
- 3 NATURE TRAIL
- 4 CONNECTION TO RIVER TRAILS PARK



TRAILS EDGE PARK



LOCATION : 725 Central Avenue

SIZE : 8.7 acres

CLASSIFICATION : Linear Park

REC CENTER : No

SCHOOL CONNECTIONS : None

CURRENT PROJECTS: None



CONTEXT

Trails Edge Park is situated next to the Straight River and just north of Downtown. The Straight River Trail runs through the park. The Rice County Activity Center is directly adjacent on the west side of the park. An active railroad runs along the east side of the park.

CURRENT CONDITIONS AND CONCERNS

The paved and nature trails are in good condition and well maintained.

PARK FACILITY CONDITIONS (SITE VERIFIED)

● GOOD ● FAIR ● POOR

● TRAILS

● RIVER/PONDS

SEASONAL AMENITIES

● HIGH USE ● LIMITED ● LOW USE

● SPRING

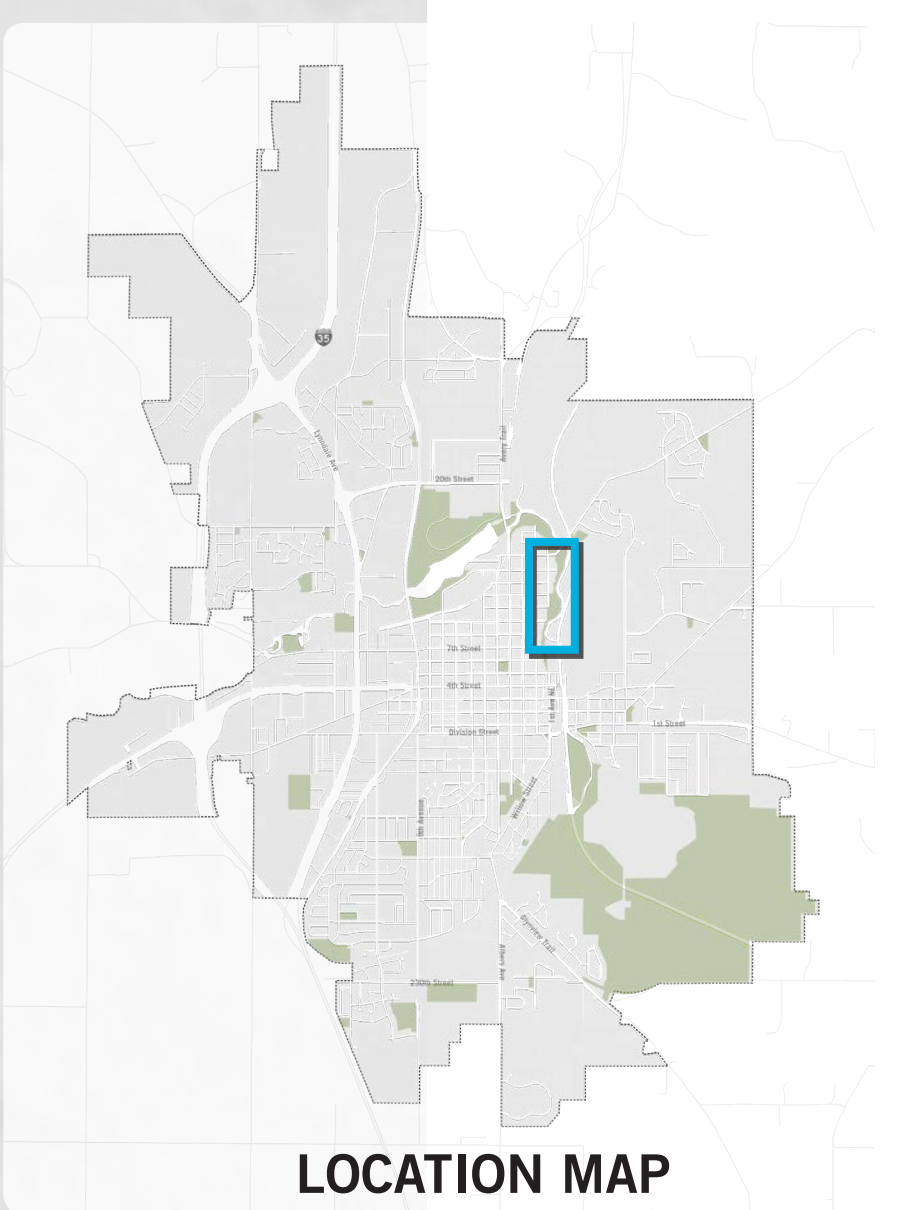
● FALL

● SUMMER

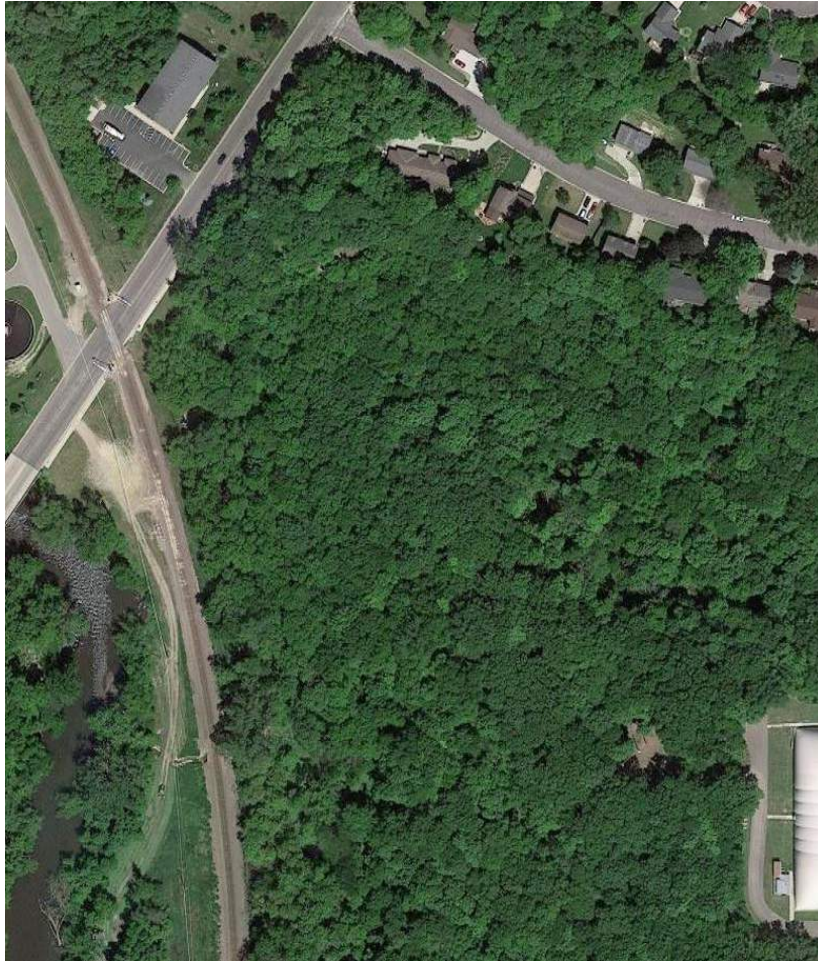
● WINTER

LEGEND

- 1 CANOE LANDING
- 2 OPEN LAWN/PICNIC SPACE
- 3 NATURE TRAIL
- 4 NATURE PLAY



WHIPPLE HEIGHTS GREENWAY



LOCATION : 1695 14th St NE

SIZE : 3.35 acres

CLASSIFICATION : Linear Park

REC CENTER : No

SCHOOL CONNECTIONS : None

CURRENT PROJECTS: None



CONTEXT

This greenway is located on the east side of the Straight River, just northwest of Shattuck-St. Mary's Sports Complex. An active railroad runs along the west side as well.

CURRENT CONDITIONS AND CONCERNS

There are currently no amenities in this park.

PARK FACILITY CONDITIONS (SITE VERIFIED)

● GOOD ● FAIR ● POOR

● PICNIC TABLES

SEASONAL AMENITIES

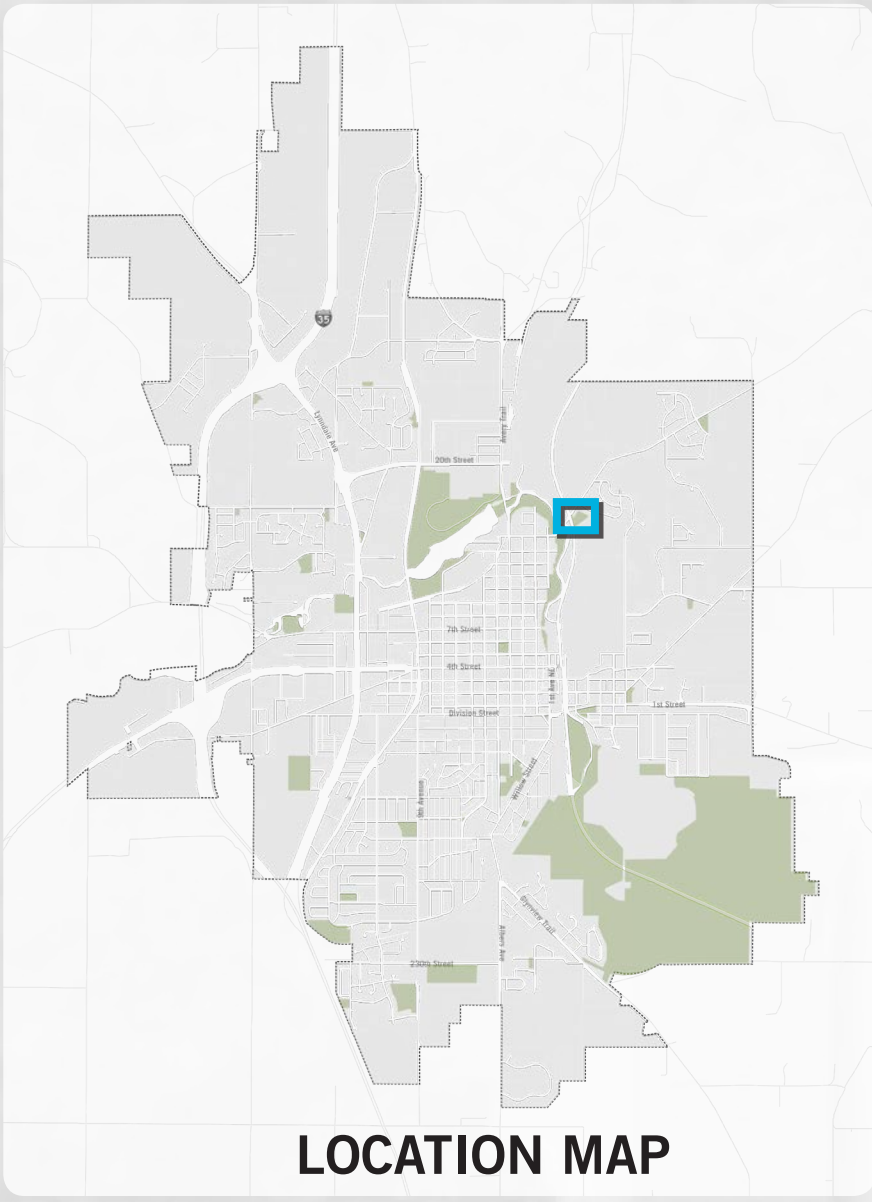
● HIGH USE ● LIMITED ● LOW USE

● SPRING ● FALL

● SUMMER ● WINTER

LEGEND

- 1 NATURE TRAIL
- 2 NATURE PLAY
- 3 WAYFINDING SIGNAGE
- 4 TRAIL CONNECTION TO SHATTUCK ST. MARY'S



LOCATION MAP

WILLOW GREENWAY



LOCATION : 901 3rd Avenue SW

SIZE :

CLASSIFICATION : Linear Park

REC CENTER : No

SCHOOL CONNECTIONS : None

CURRENT PROJECTS: None



CONTEXT

Willow Greenway is located on the southeast side of Faribault and is situated in a single family and multi family residential neighborhood.

CURRENT CONDITIONS AND CONCERNS

There are currently no amenities in this greenway.

PARK FACILITY CONDITIONS (SITE VERIFIED)

● GOOD ● FAIR ● POOR

SEASONAL AMENITIES

● HIGH USE ● LIMITED ● LOW USE

● SPRING ● FALL

● SUMMER ● WINTER

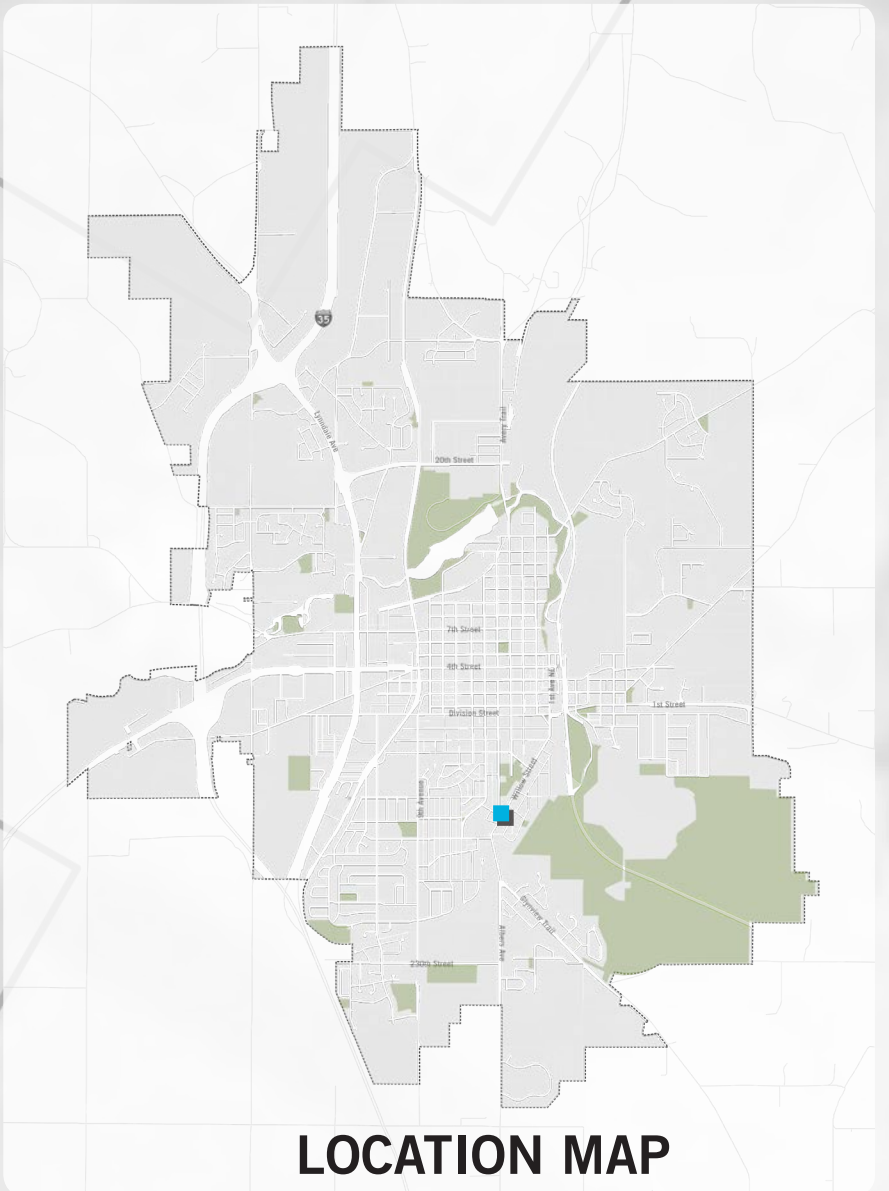
LEGEND

- 1 PUBLIC ART
- 2 FLOWER GARDEN
- 3 TURF

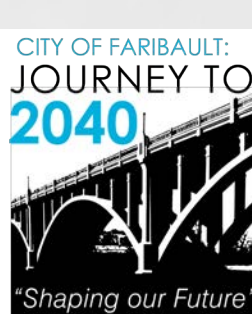
GARFIELD PL

3 RD AVE SW

WILLOW ST



LOCATION MAP



WILLOW GREENWAY MASTER PLAN