

# BATCHELDER PARK



**LOCATION :** 2321 Kennedy Drive

**SIZE :** 1.80 acres

**CLASSIFICATION :** Neighborhood Park/Playground

**REC CENTER :** No

**SCHOOL CONNECTIONS :** None

**CURRENT PROJECTS:** None



## CONTEXT

Batchelder Park is located near the north side of Faribault. It serves as a neighborhood park near single family homes. A city trail and active railroad border the east side of the park.

## CURRENT CONDITIONS AND CONCERNS

While the park is generally well maintained, the play equipment and picnic areas are aging. The park does not meet ADA guidelines. Large, mature trees provide a nice buffer to the railroad.

## PARK FACILITY CONDITIONS (SITE VERIFIED)

● GOOD ● FAIR ● POOR

● PLAYGROUND

● PICNIC AREAS

● TRAILS

## SEASONAL AMENITIES

● HIGH USE ● LIMITED ● LOW USE

● SPRING

● FALL

● SUMMER

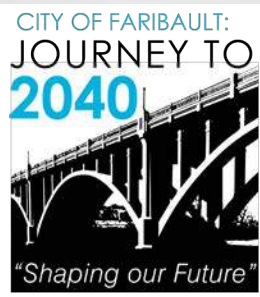
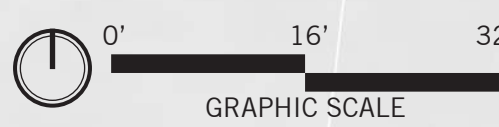
● WINTER



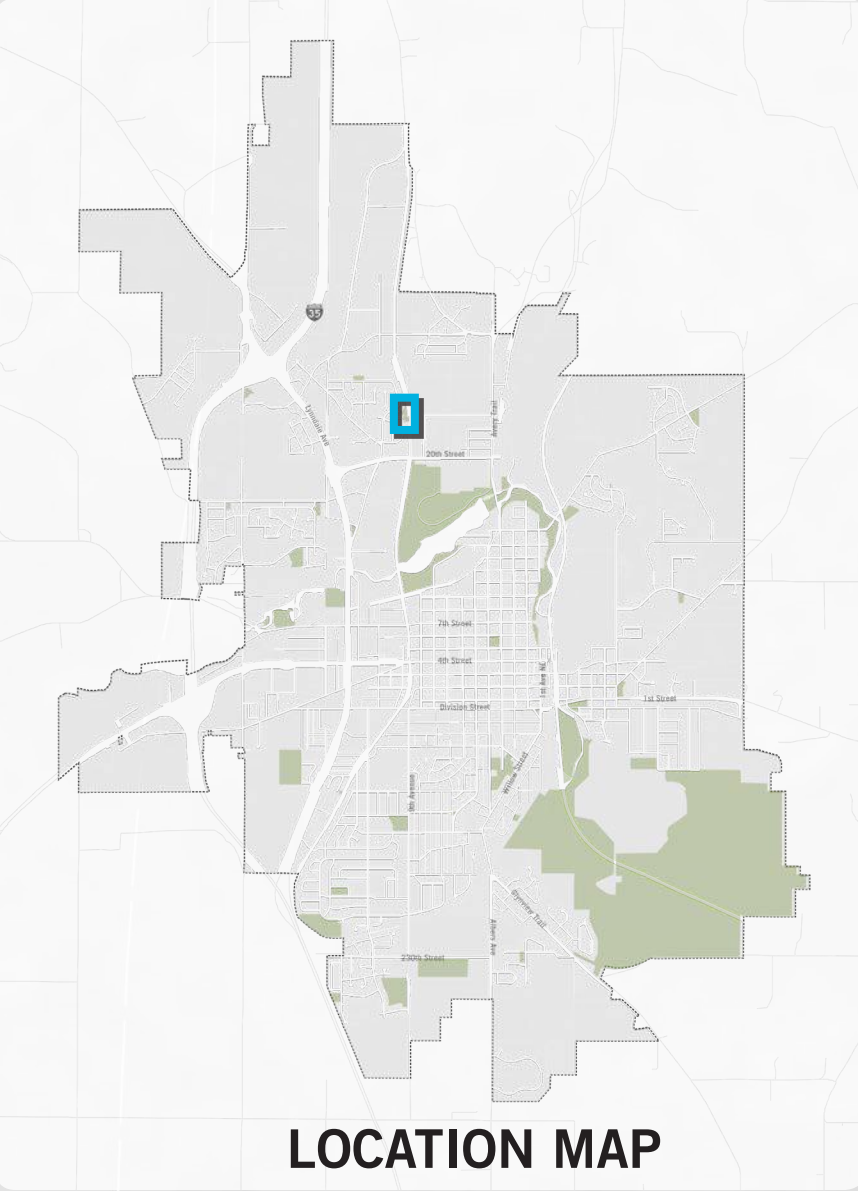
**LEGEND**

- 1 PLAYGROUND
- 2 BOULDER SEATING
- 3 EAGLES NEST PLAY FEATURE
- 4 NATURE PLAY

KENNEDY DR.

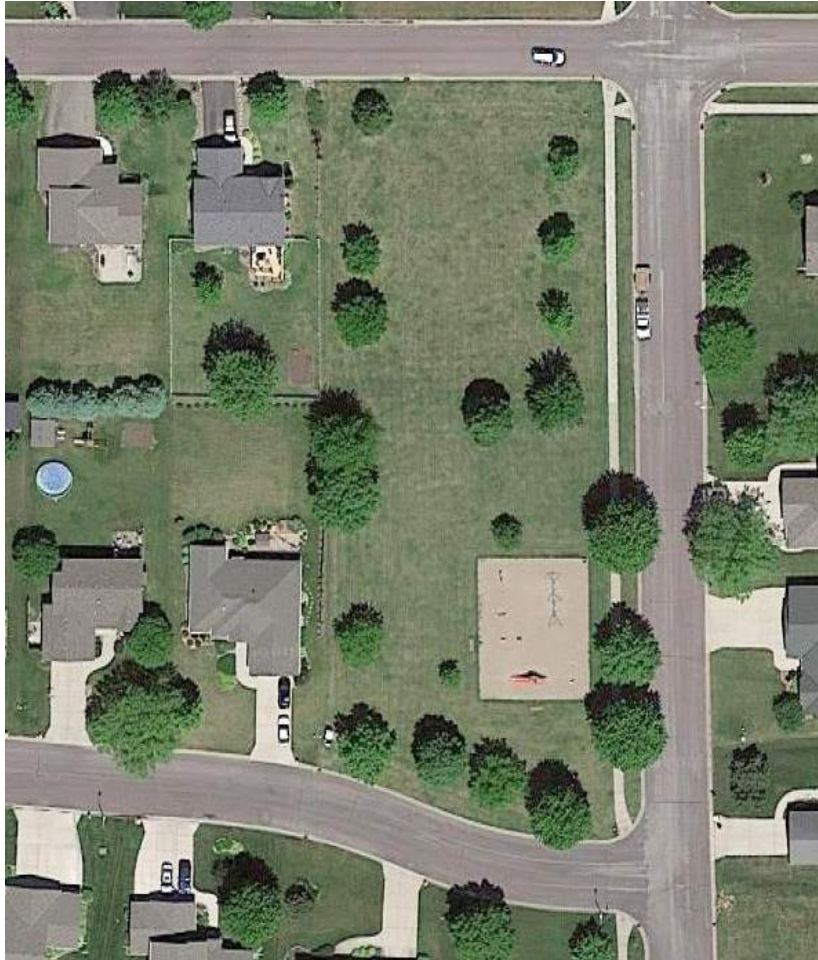


# BATCHELDER PARK MASTER PLAN





# BLUEBIRD PARK



**LOCATION :** 1700 Sunbird Drive

**SIZE :** 1.20 acres

**CLASSIFICATION :** Neighborhood Park/Playground

**REC CENTER :** No

**SCHOOL CONNECTIONS :** None

**CURRENT PROJECTS:** None



## CONTEXT

This neighborhood park is located on the southwest side of River Bend Nature Center. A city trail is within walking distance to the park. Meadow Ridge Memorial Cemetary is near the park as well.

## CURRENT CONDITIONS AND CONCERNS

The park is well maintained but the play equipment is aging. The park does not meet ADA guidelines.

## PARK FACILITY CONDITIONS (SITE VERIFIED)

● GOOD ● FAIR ● POOR

● PLAYGROUND

● PICNIC AREAS

## SEASONAL AMENITIES

● HIGH USE ● LIMITED ● LOW USE

● SPRING

● FALL

● SUMMER

● WINTER



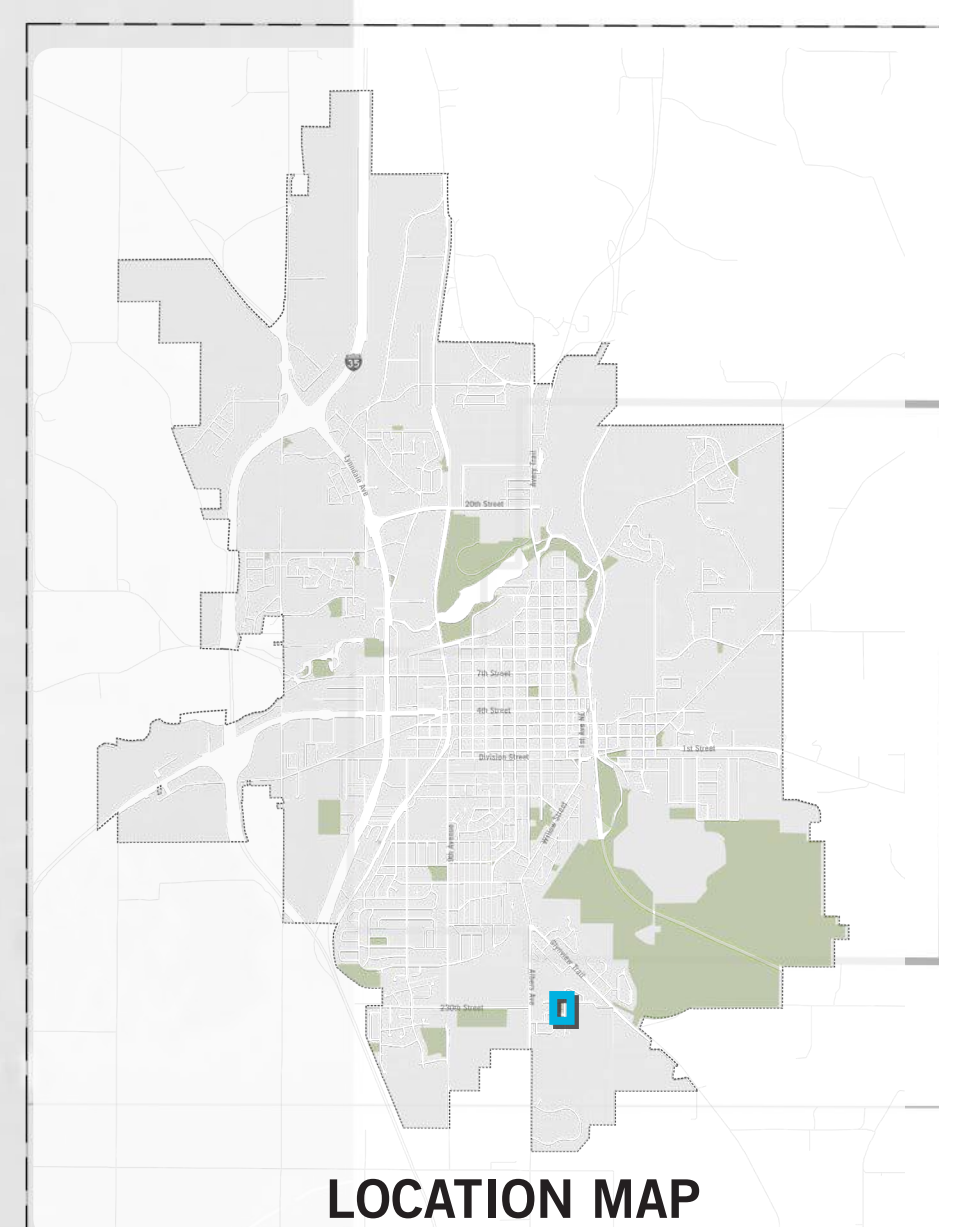
**LEGEND**

- 1 PLAYGROUND
- 2 HALF COURT BASKETBALL
- 3 SHELTER WITH RESTROOM
- 4 GAME TABLES
- 5 OPEN LAWN

ALLEN LN

SUNSHINE LN

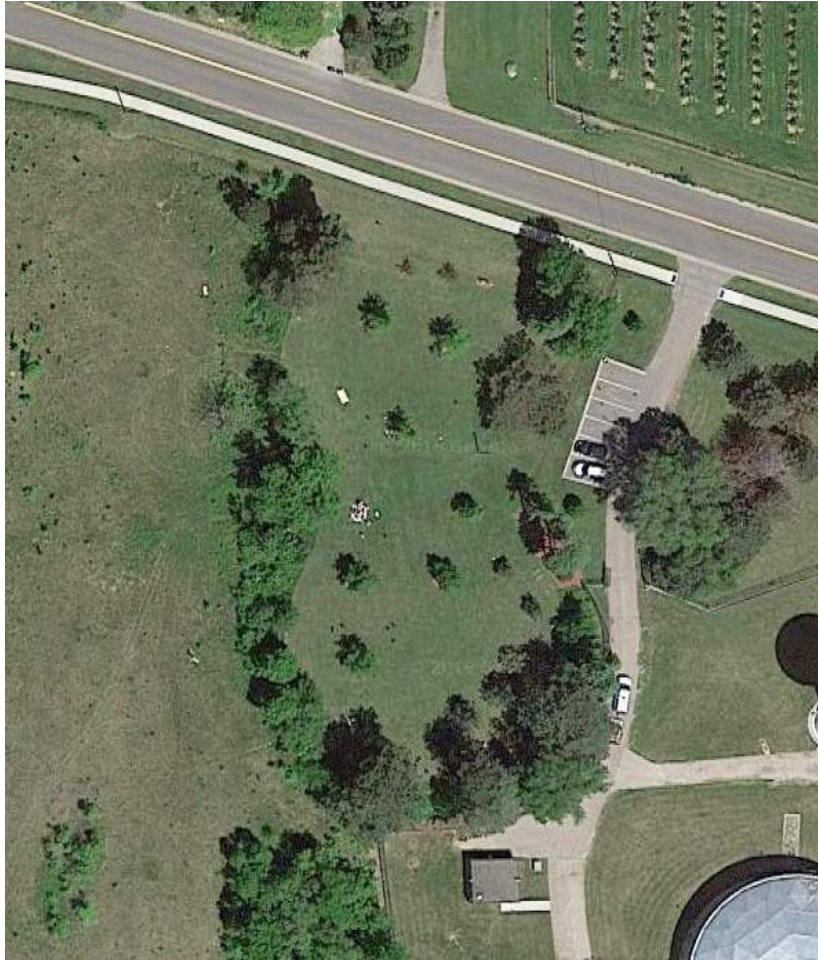
SUNBIRD DR



LOCATION MAP



# CITY VIEW PARK



**LOCATION :** 1225 Parshall Street

**SIZE :** 2.0 acres

**CLASSIFICATION :** Neighborhood Park/Playground

**REC CENTER :** No

**SCHOOL CONNECTIONS :** None

**CURRENT PROJECTS:** None



## CONTEXT

City View Park is on the east side of Faribault. It is located on top of a hill and has long views of the City. A municipal water tower sits behind the park.

## CURRENT CONDITIONS AND CONCERNS

The park is well maintained but does not currently have any facilities.

## PARK FACILITY CONDITIONS (SITE VERIFIED)

● GOOD ● FAIR ● POOR

● PICNIC AREAS

## SEASONAL AMENITIES

● HIGH USE ● LIMITED ● LOW USE

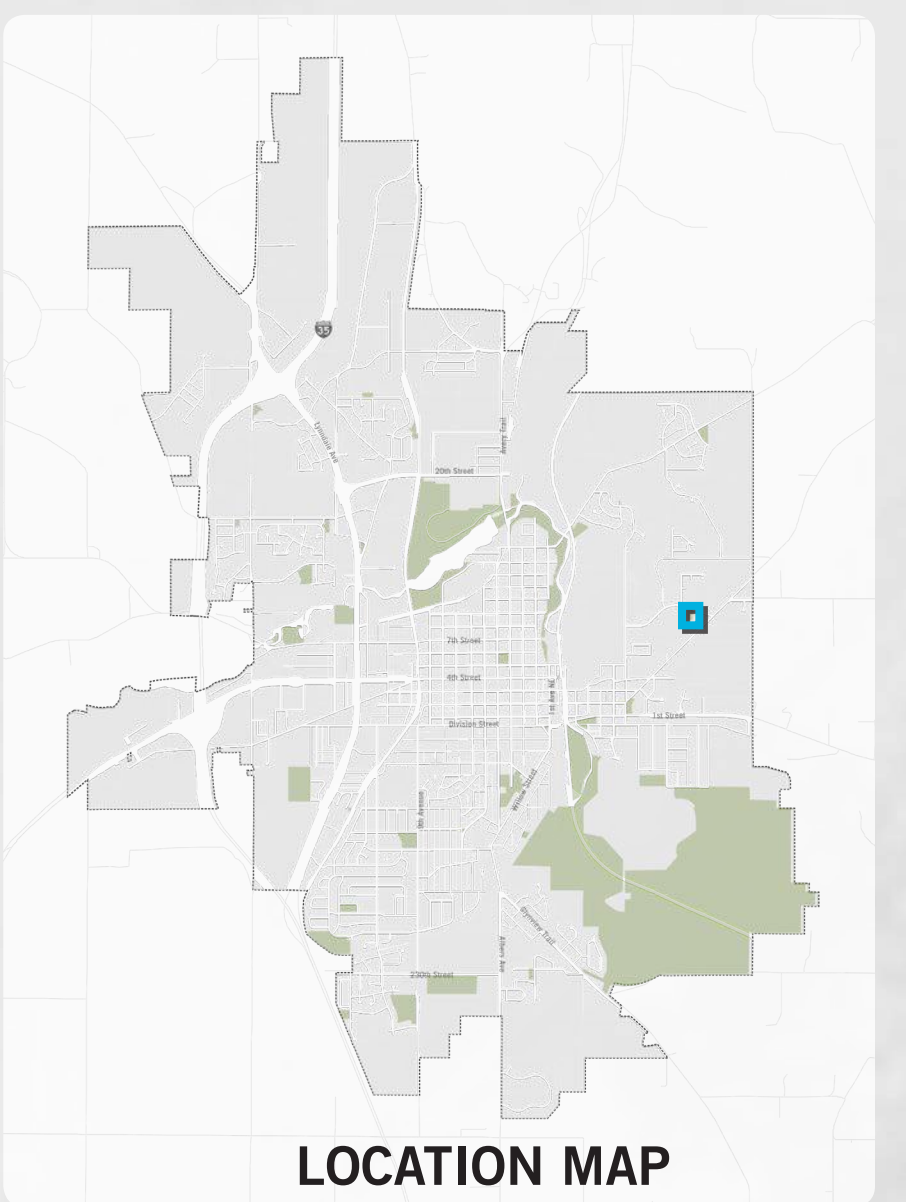
● SPRING ● FALL

● SUMMER ● WINTER



## LEGEND

- 1 OVERLOOK WITH PERGOLA
- 2 OPEN LAWN
- 3 NATURE PLAY
- 4 PICNIC TABLES
- 5 EXISTING PARKING
- 6 WATER TOWER THEMED PLAY FEATURE/OVERLOOK TOWER
- 7 BAT HOUSES





# COUNTRY CLUB PARK



**LOCATION :** 1725 17th Street NW

**SIZE :** 1.60 acres

**CLASSIFICATION :** Neighborhood Park/Playground

**REC CENTER :** No

**SCHOOL CONNECTIONS :** None

**CURRENT PROJECTS:** None



## CONTEXT

Country Club Park is located south of the Faribault Golf and Country Club. It is on the north side of Faribault and is in close proximity to Lyndale Ave. The open space primarily functions as a storm water retention area.

## CURRENT CONDITIONS AND CONCERNS

There are currently no amenities in this park.

## PARK FACILITY CONDITIONS (SITE VERIFIED)

● GOOD ● FAIR ● POOR

## SEASONAL AMENITIES

● HIGH USE ● LIMITED ● LOW USE

● SPRING ● FALL

● SUMMER ● WINTER



**LEGEND**

- 1 POLLINATOR LAWN
- 2 INTERPRETIVE SIGNAGE
- 3 EXISTING STORMWATER
- 4 SLEDDING HILL
- 5 SEATING



**COUNTRY CLUB PARK MASTER PLAN**



# FOREST PARK



**LOCATION :** 1516 Greenleaf Road



**SIZE :** 1.20 acres

**CLASSIFICATION :** Neighborhood Park/Playground

**REC CENTER :** No

**SCHOOL CONNECTIONS :** None

**CURRENT PROJECTS:** None

## CONTEXT

This neighborhood park is located on the north side of Faribault. It has a connection to a city trail but no other pedestrian or vehicular access. This park is also located in a single family residential neighborhood. An industrial park is north of the site but well buffered by vegetation.

## CURRENT CONDITIONS AND CONCERNS

Forest Park is well maintained but has aging equipment and facilities. No amenities in the park meet ADA accessibility requirements. Large mature trees create a nice buffer to the industrial site to the north and shade within the park.

## PARK FACILITY CONDITIONS (SITE VERIFIED)

● GOOD ● FAIR ● POOR

● PLAYGROUND

● BASKETBALL COURT

● PICNIC AREAS

● SAND VOLLEYBALL

● TRAILS

## SEASONAL AMENITIES

● HIGH USE ● LIMITED ● LOW USE

● SPRING

● FALL

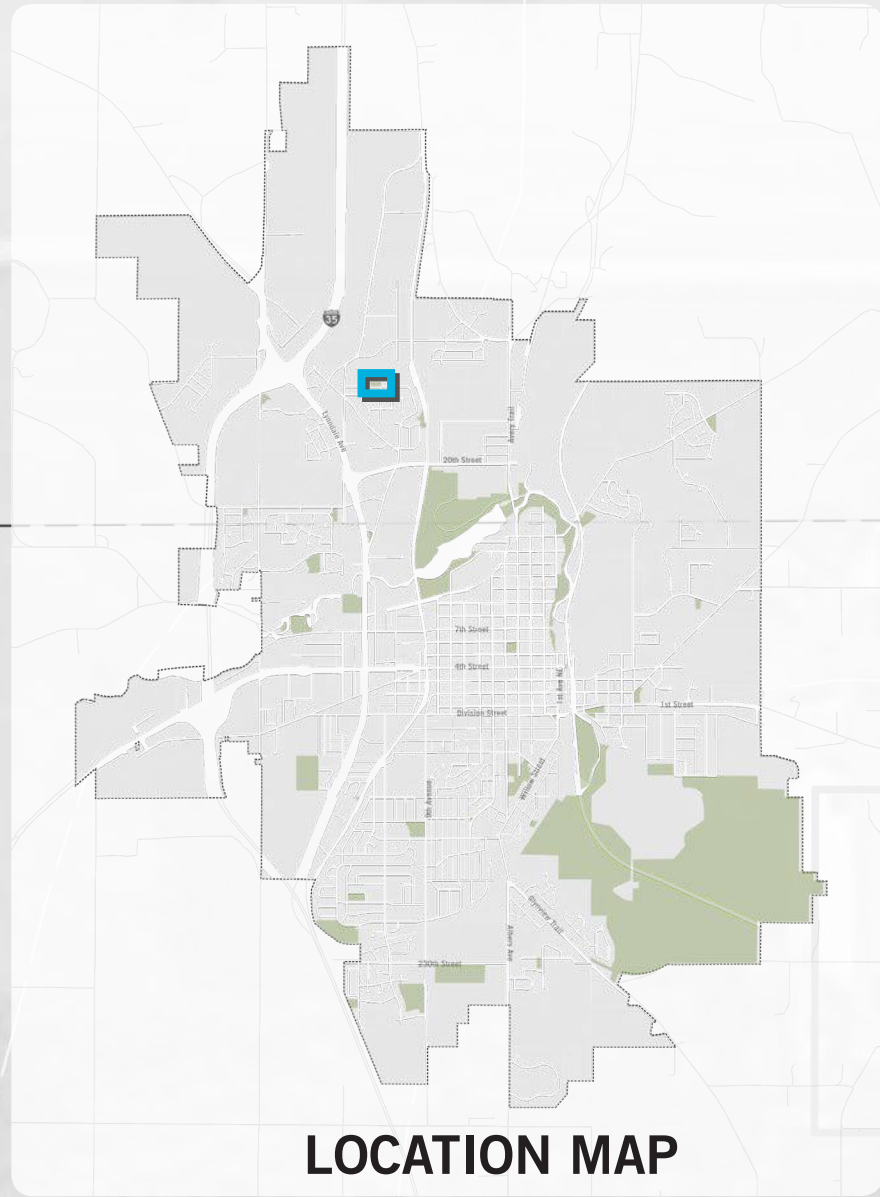
● SUMMER

● WINTER



**LEGEND**

- 1 PLAYGROUND
- 2 SPORTS COURT
- 3 SIGNATURE PLAY FEATURE
- 4 VOLLEYBALL COURTS
- 5 POLLINATOR LAWN
- 6 TRAILHEAD





# JEFFERSON PARK



**LOCATION :** 910 9th Avenue SW

**SIZE :** 5.50 acres

**CLASSIFICATION :** Neighborhood Park/Playground

**REC CENTER :** No

**SCHOOL CONNECTIONS :** Yes

**CURRENT PROJECTS:** None



## CONTEXT

This park is located east of Jefferson School in south central Faribault. Church of Christ borders the east side of the park. It is situated in a single family residential neighborhood. Jefferson Park also hosts Park and Recreation, and community programming during the summer.

## CURRENT CONDITIONS AND CONCERNS

The fields are in good condition and well maintained. The north hockey rink boards appear to be aging and are in need of some repairs. Current plans call for the north hockey rink to be replaced in fall 2018. The community building appears to be well maintained and in good condition. It may be small for the size OF groups that use it.

## PARK FACILITY CONDITIONS (SITE VERIFIED)

● GOOD ● FAIR ● POOR

● PLAYGROUND

● SOCCER/RUGBY FIELD

● SOFTBALL FIELD

● HOCKEY RINK

● SKATING RINK

● WARMING HOUSE

● INDOOR BATHROOMS

## SEASONAL AMENITIES

● HIGH USE ● LIMITED ● LOW USE

● SPRING

● FALL

● SUMMER

● WINTER



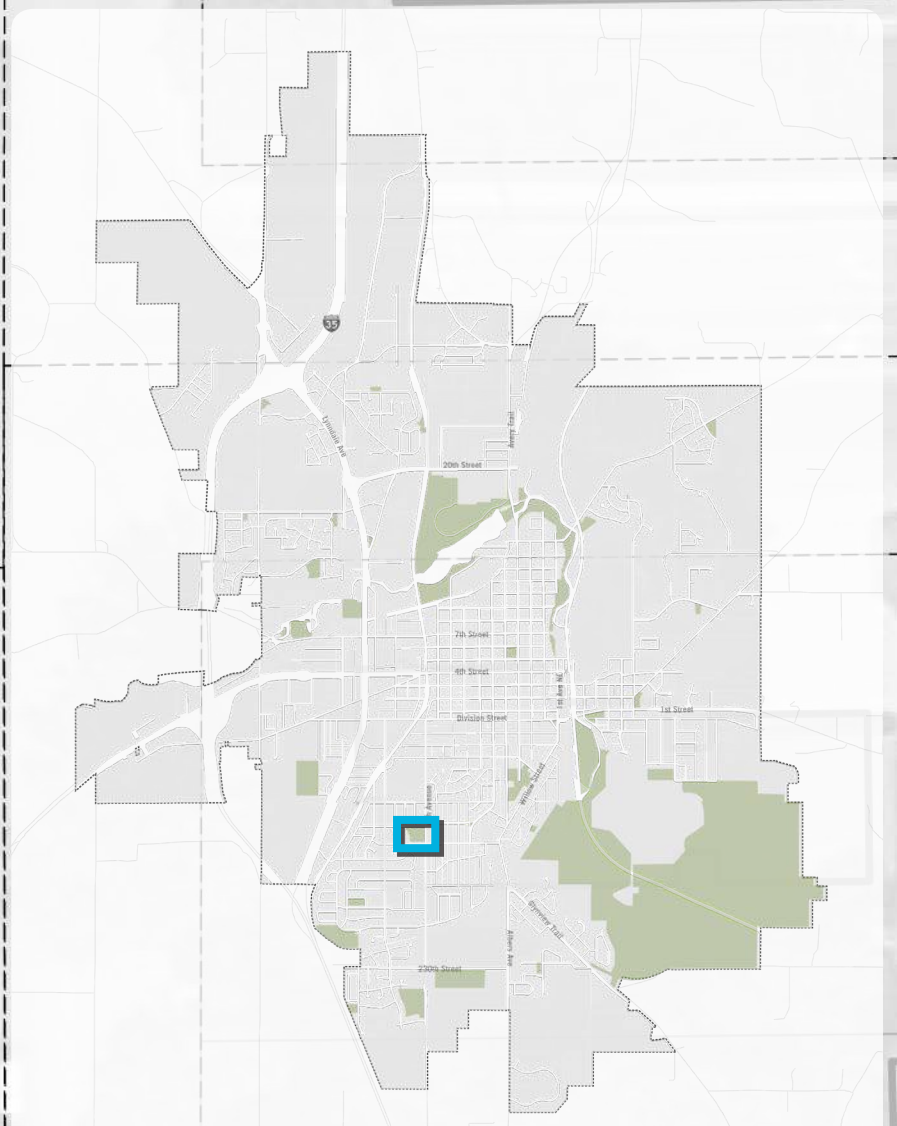
**LEGEND**

- 1 EXISTING PARK BUILDING
- 2 FIRE PIT WITH SEATING
- 3 WALKWAY CONNECTION
- 4 SEATING

9TH ST SW

10TH ST SW

9TH AVE SW



LOCATION MAP



# KINDER PARK



**LOCATION :** 1615 24th Avenue NW

**SIZE :** 0.7 acres

**CLASSIFICATION :** Neighborhood Park/Playground

**REC CENTER :** No

**SCHOOL CONNECTIONS :** None

**CURRENT PROJECTS:** None



## CONTEXT

This neighborhood park is located in the northwest side of Faribault, just east of Interstate 35. Undeveloped, agricultural land is north of the park. It serves single family and multi family residential homes.

## CURRENT CONDITIONS AND CONCERNS

While Kinder Park is well maintained, the facilities are aging and are in need of upgrades. There is no vehicular or pedestrian circulation within the park. It does not meet ADA guidelines either.

## PARK FACILITY CONDITIONS (SITE VERIFIED)

● GOOD ● FAIR ● POOR

● PLAYGROUND

● PICNIC AREAS

● BASKETBALL COURTS

● MONUMENT

## SEASONAL AMENITIES

● HIGH USE ● LIMITED ● LOW USE

● SPRING

● FALL

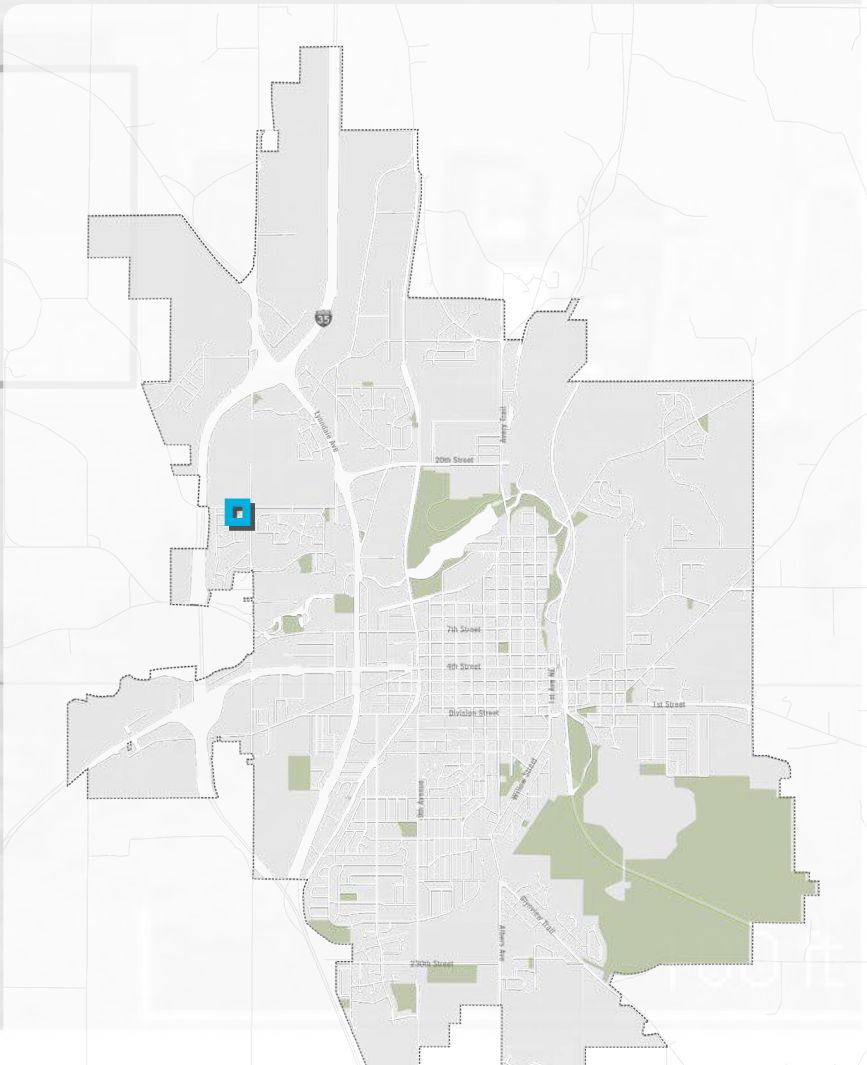
● SUMMER

● WINTER



**LEGEND**

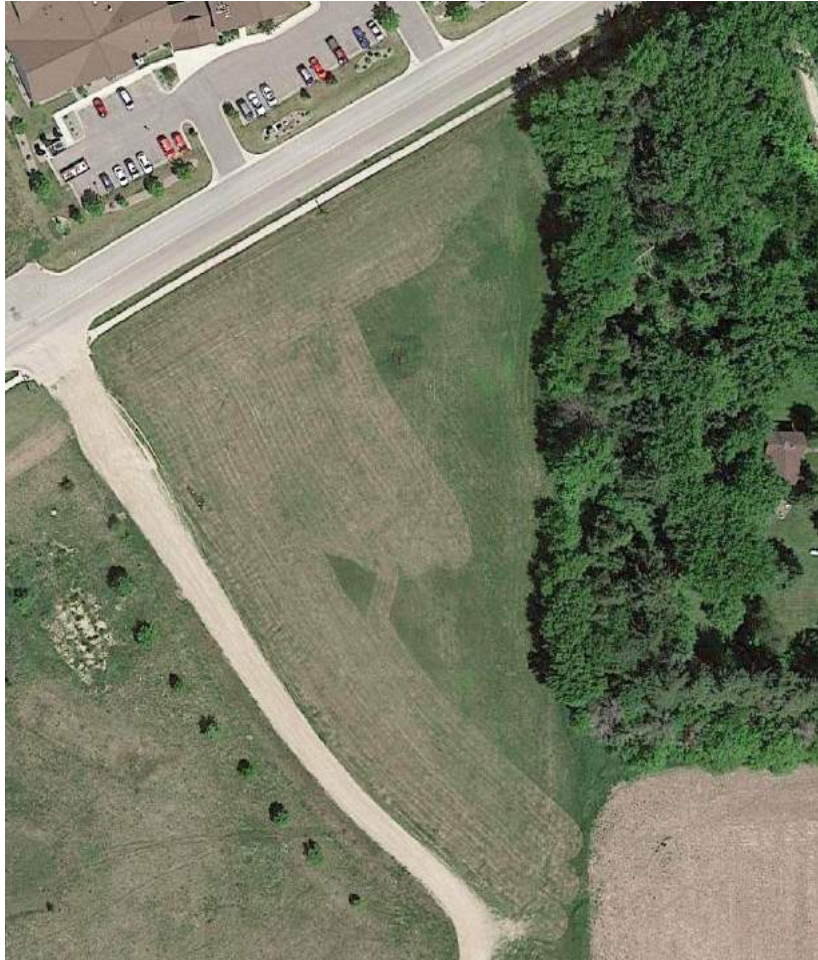
- 1 PLAYGROUND
- 2 PUBLIC ART
- 3 PICNIC AREA
- 4 EXISTING MEMORIAL
- 5 HALF COURT BASKETBALL
- 6 PORTABLE RESTROOM ENCLOSURE



LOCATION MAP



# MEADOWS PARK



**LOCATION :** 2505 14th Street NE

**SIZE :** 2.90 acres

**CLASSIFICATION :** Neighborhood Park/Playground

**REC CENTER :** No

**SCHOOL CONNECTIONS :** None

**CURRENT PROJECTS:** None



## CONTEXT

Meadows Park is located directly adjacent to Milestone Senior Living - Faribault. It is on the very north east edge of town and surrounded by undeveloped open space.

## CURRENT CONDITIONS AND CONCERNS

There are currently no amenities in this park as it is undeveloped at this time.

## PARK FACILITY CONDITIONS (SITE VERIFIED)

● GOOD ● FAIR ● POOR

## SEASONAL AMENITIES

● HIGH USE ● LIMITED ● LOW USE

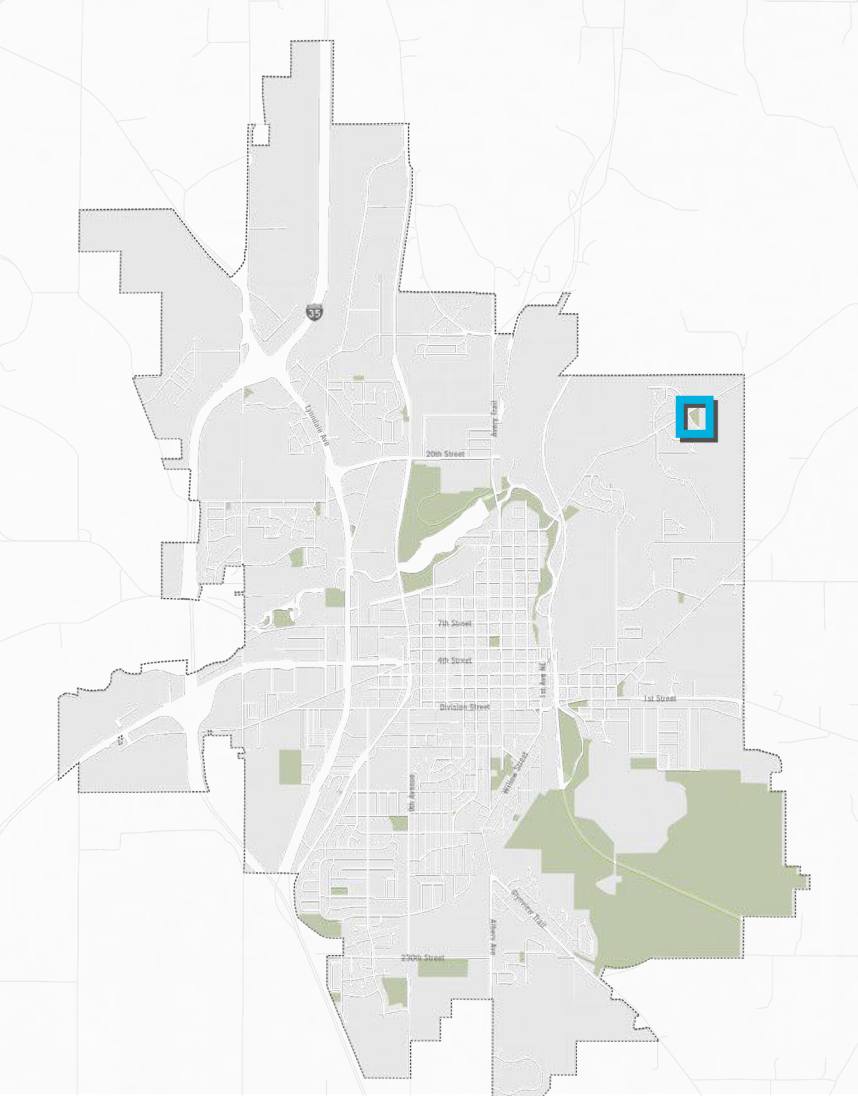
● SPRING ● FALL

● SUMMER ● WINTER



**LEGEND**

- 1 GATEWAY WITH PERGOLA SEATING
- 2 PLAYGROUND
- 3 BEE LAWN
- 4 PICKLEBALL
- 5 PRAIRIE
- 6 NATURE WALK
- 7 IMPROVED CROSSING
- 8 SIDEWALKS
- 9 BIRDBOUSES



LOCATION MAP



# MEDER PARK



**LOCATION :** 400 Division Street E

**SIZE :** 2.50 acres

**CLASSIFICATION :** Neighborhood Park/Playground

**REC CENTER :** No

**SCHOOL CONNECTIONS :** None

**CURRENT PROJECTS:** None



## CONTEXT

Meder Park is located on the southeast side of the viaduct. It has significant grade change through the site. It currently serves as a pedestrian connection from 1st St NE to Teepee Tonka Park.

## CURRENT CONDITIONS AND CONCERNS

There are currently no amenities in this park.

## PARK FACILITY CONDITIONS (SITE VERIFIED)

● GOOD ● FAIR ● POOR

## SEASONAL AMENITIES

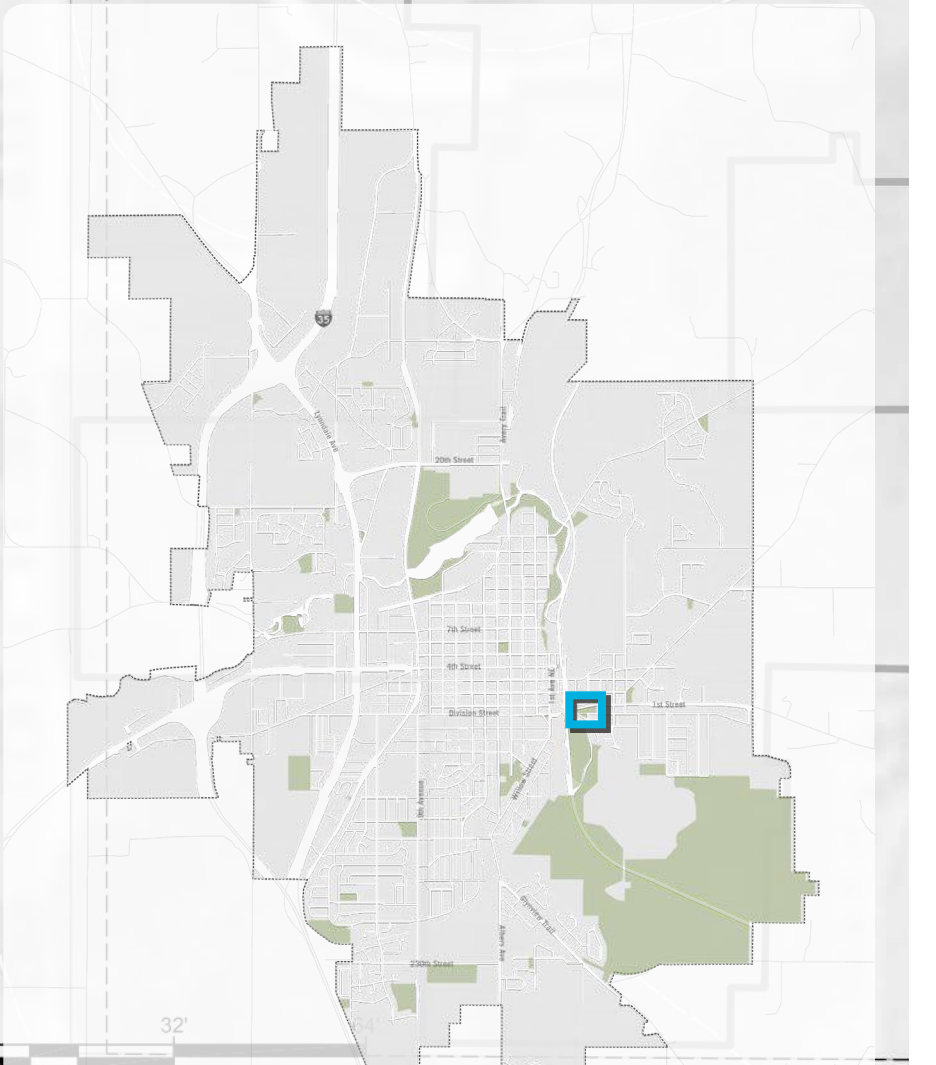
● HIGH USE ● LIMITED ● LOW USE

● SPRING ● FALL  
● SUMMER ● WINTER



**LEGEND**

- 1 OVERLOOK WITH SEATING
- 2 POLLINATOR LAWN
- 3 ACCESSIBLE WALK
- 4 PICNIC AREA



LOCATION MAP

YE PARK



# RIVER TRAILS PARK



**LOCATION :** 917 Rice Street

**SIZE :** 0.90 acres

**CLASSIFICATION :** Neighborhood Park/Playground

**REC CENTER :** No

**SCHOOL CONNECTIONS :** None

**CURRENT PROJECTS:** None



## CONTEXT

This neighborhood park is located just north of Straight River Park. It has a trail connection to the Straight River Trail and provides access to the surrounding neighborhood.

## CURRENT CONDITIONS AND CONCERNS

Overall this park is in good condition and is well maintained. The playground equipment is aging and does not meeting ADA guidelines. Mature trees are a great amenity for River Trails Park and provide habitat and shade.

## PARK FACILITY CONDITIONS (SITE VERIFIED)

● GOOD ● FAIR ● POOR

● PLAYGROUND

● TRAILS

● NATURE AREAS

## SEASONAL AMENITIES

● HIGH USE ● LIMITED ● LOW USE

● SPRING

● FALL

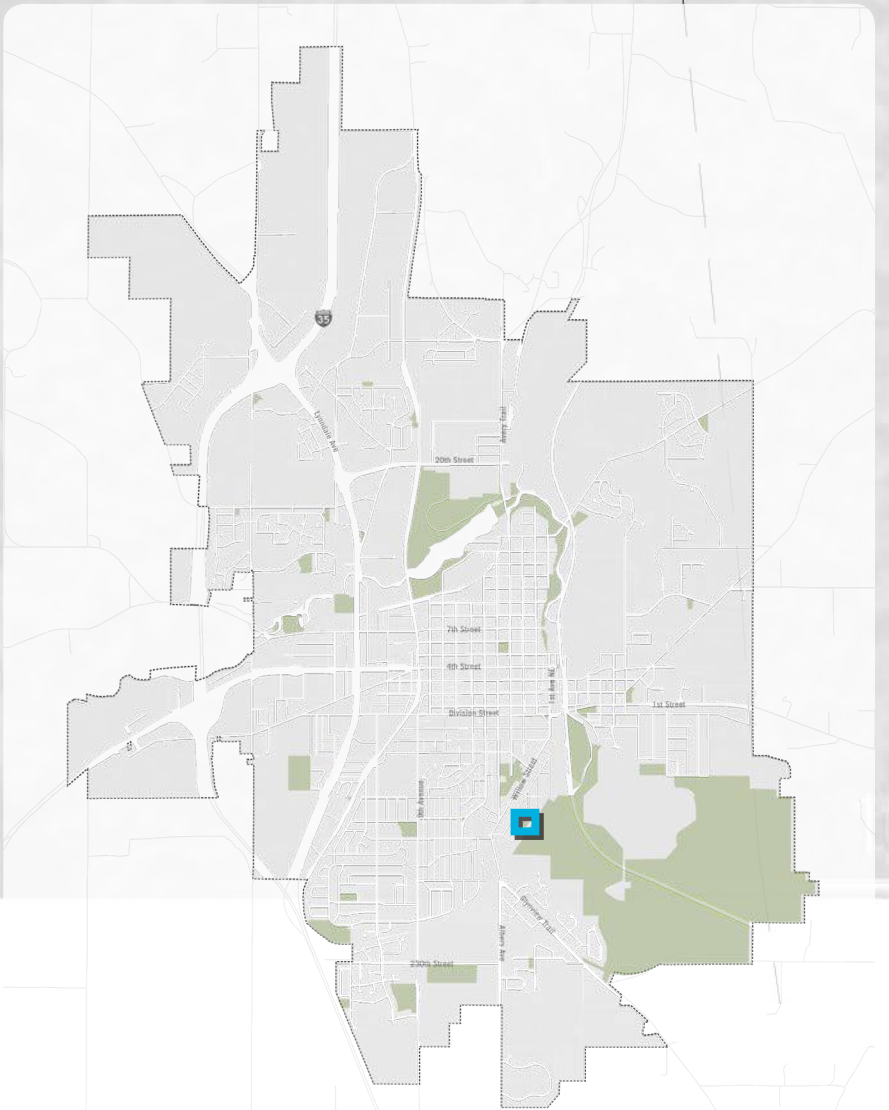
● SUMMER

● WINTER



**LEGEND**

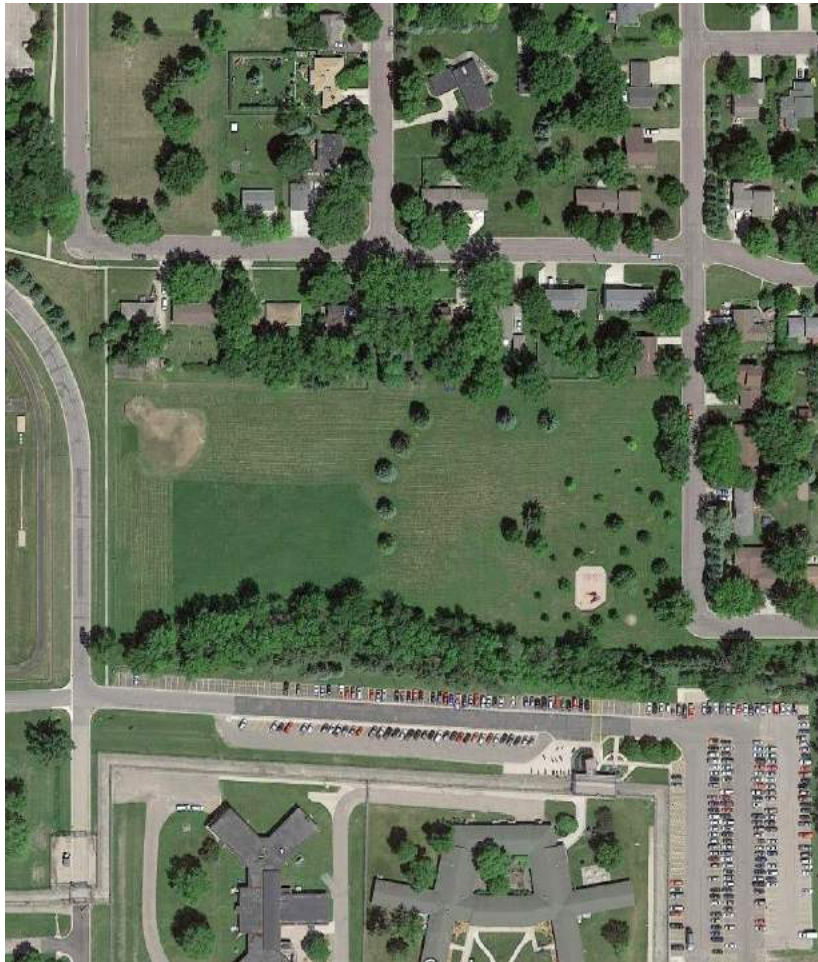
- 1 PLAYGROUND
- 2 PORTABLE RESTROOM ENCLOSURE
- 3 BOULDER SEATS
- 4 BICYCLE REPAIR STATION
- 5 POLLINATOR LAWN



LOCATION MAP



# SEABURY PARK



**LOCATION :** 430 10th Avenue SE

**SIZE :** 6.90 acres

**CLASSIFICATION :** Neighborhood Park/Playground

**REC CENTER :** No

**SCHOOL CONNECTIONS :** None

**CURRENT PROJECTS:** None



## CONTEXT

Seabury Park is located north of the Minnesota Correctional Facility - Faribault and east of Minnesota State Academy for the Blind. It has no vehicular access into the park and has limited pedestrian circulation. It is in close proximity to River Bend Nature Center but does not have a connection.

## CURRENT CONDITIONS AND CONCERNS

This park is in fair condition. It has limited facilities and no pedestrian circulation. The softball field appears to have some drainage concerns as well.

## PARK FACILITY CONDITIONS (SITE VERIFIED)

● GOOD ● FAIR ● POOR

● PLAYGROUND

● PICNIC AREAS

● SOFTBALL FIELD

● BENCHES

## SEASONAL AMENITIES

● HIGH USE ● LIMITED ● LOW USE

● SPRING

● FALL

● SUMMER

● WINTER



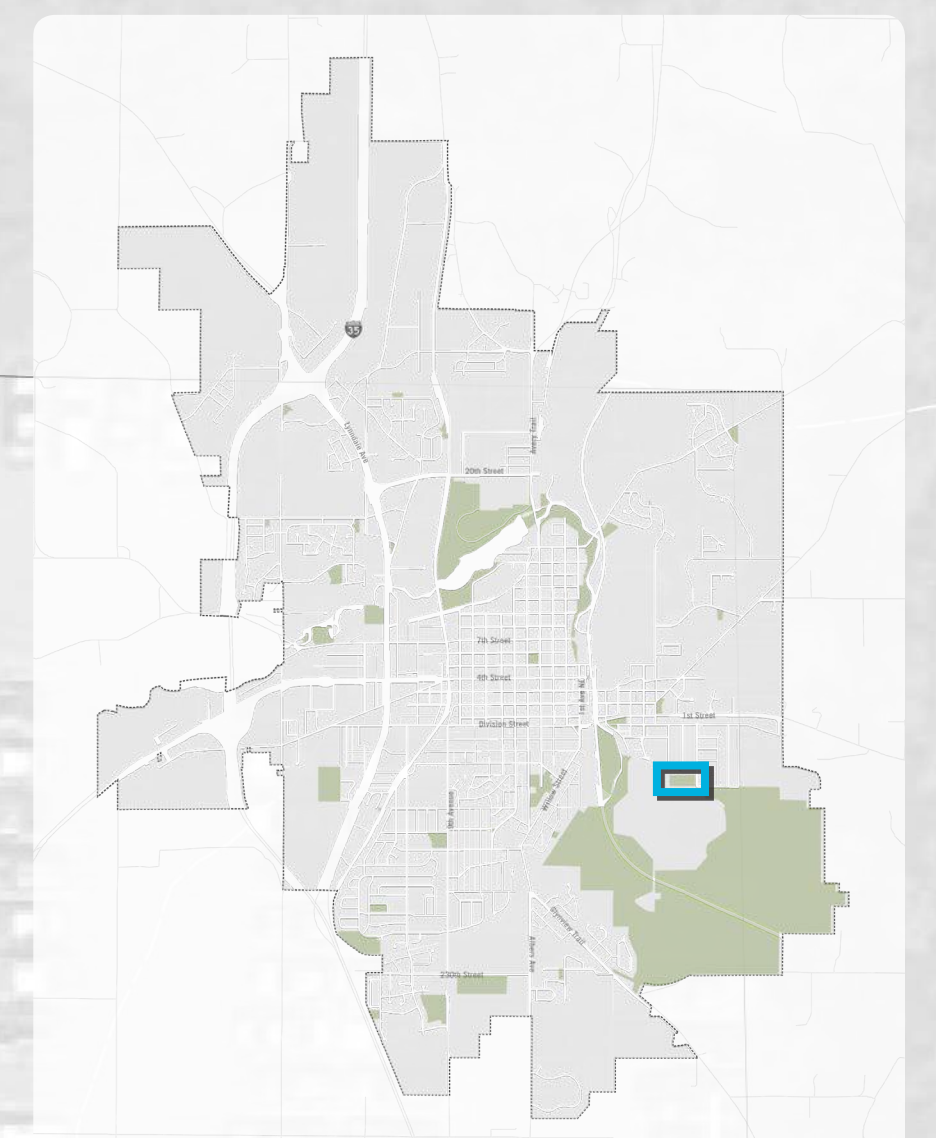
**LEGEND**

- 1 EXISTING FIELD
- 2 FOOTBALL/RUGBY FIELD
- 3 FULLY ACCESSIBLE PLAYGROUND WITH PLAY HILL
- 4 SPORTS COURT
- 5 PICNIC SHELTER WITH RESTROOM
- 6 PARKING
- 7 PRAIRIE

BARRON RD

10TH AVE SE

LINDEN LN



LOCATION MAP



# STONERIDGE PARK



**LOCATION :** 1915 13th Street NW

**SIZE :** 5.10 acres

**CLASSIFICATION :** Neighborhood Park/Playground

**REC CENTER :** No

**SCHOOL CONNECTIONS :** None

**CURRENT PROJECTS:** None



## CONTEXT

Stoneridge Park is just north of the Cannon River. It is largely surrounded by naturalized areas with mature trees.

## CURRENT CONDITIONS AND CONCERNS

The playground equipment is aging and does not meeting ADA guidelines.

## PARK FACILITY CONDITIONS (SITE VERIFIED)

● GOOD ● FAIR ● POOR

● PLAYGROUND

## SEASONAL AMENITIES

● HIGH USE ● LIMITED ● LOW USE

● SPRING

● FALL

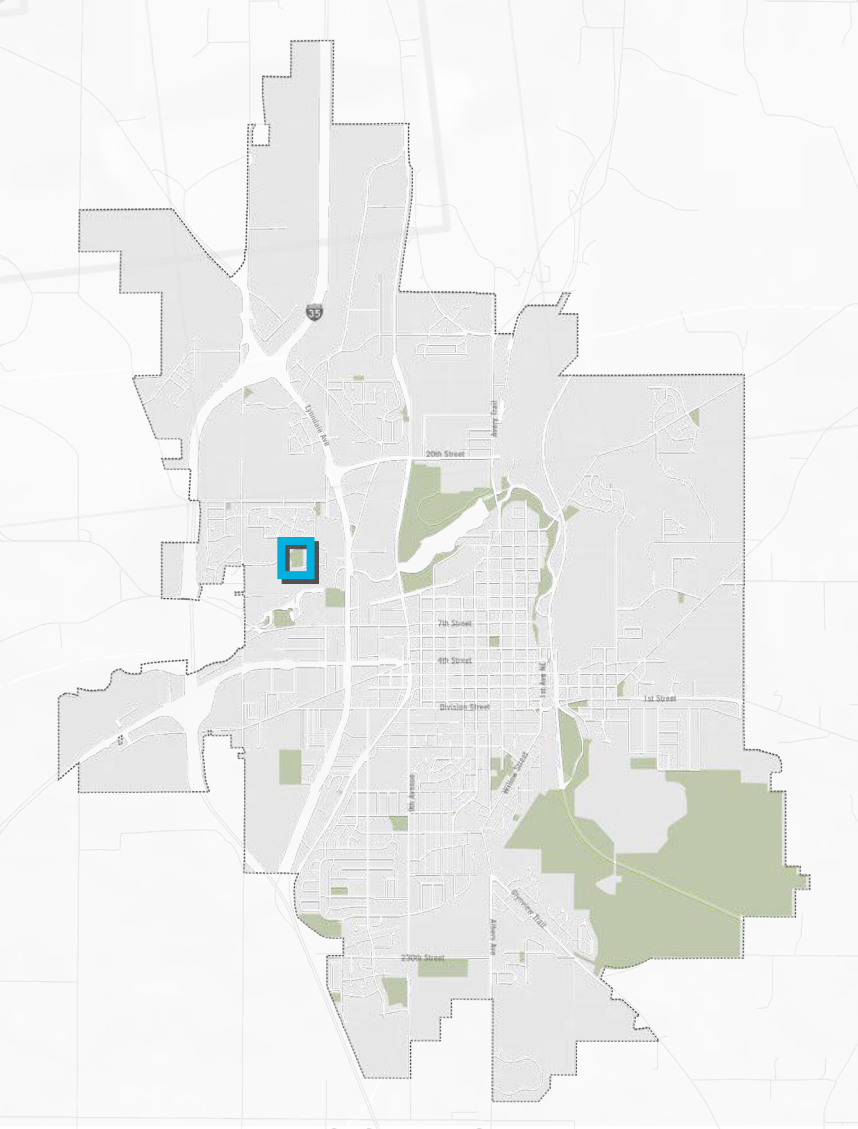
● SUMMER

● WINTER



**LEGEND**

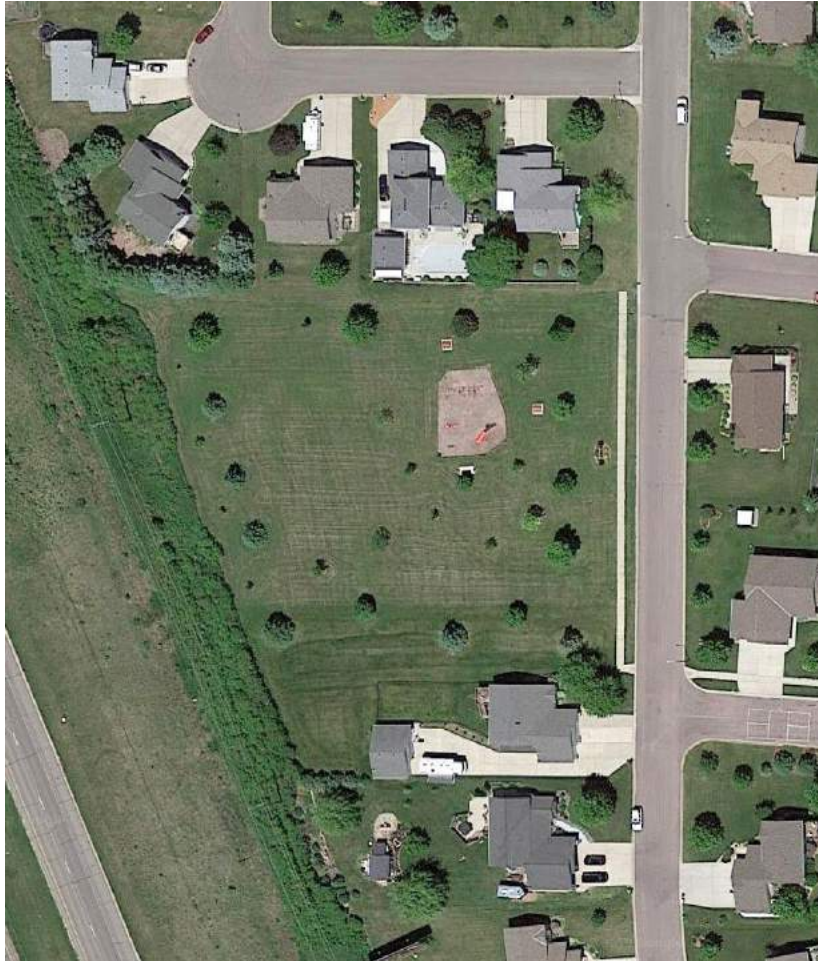
- 1 PARKING
- 2 PLAYGROUND
- 3 OPEN LAWN/FLEX FIELD
- 4 PICNIC SHELTER
- 5 PLAY HILL
- 6 STORMWATER
- 7 BOULDER SEATING IN HILL
- 8 PRAIRIE
- 9 SLEDDING HILL
- 10 EXISTING BERM MAINTAINED



LOCATION MAP



# WESTWOOD PARK



**LOCATION :** 1900 Westwood Drive

**SIZE :** 2.10 acres

**CLASSIFICATION :** Neighborhood Park/Playground

**REC CENTER :** No

**SCHOOL CONNECTIONS :** None

**CURRENT PROJECTS:** None



## CONTEXT

Westwood Park is a neighborhood park located on the south side of Faribault in a single family residential neighborhood. It is directly adjacent to Interstate 35 on the west.

## CURRENT CONDITIONS AND CONCERNS

The playground and picnic facilities are in fair condition but do not meet ADA guidelines. The sidewalk connection does not continue into the neighborhood. The park does not accommodate vehicular traffic either.

## PARK FACILITY CONDITIONS (SITE VERIFIED)

● GOOD ● FAIR ● POOR

● PLAYGROUND

● PICNIC AREAS

● LITTLE LIBRARY

## SEASONAL AMENITIES

● HIGH USE ● LIMITED ● LOW USE

● SPRING

● FALL

● SUMMER

● WINTER

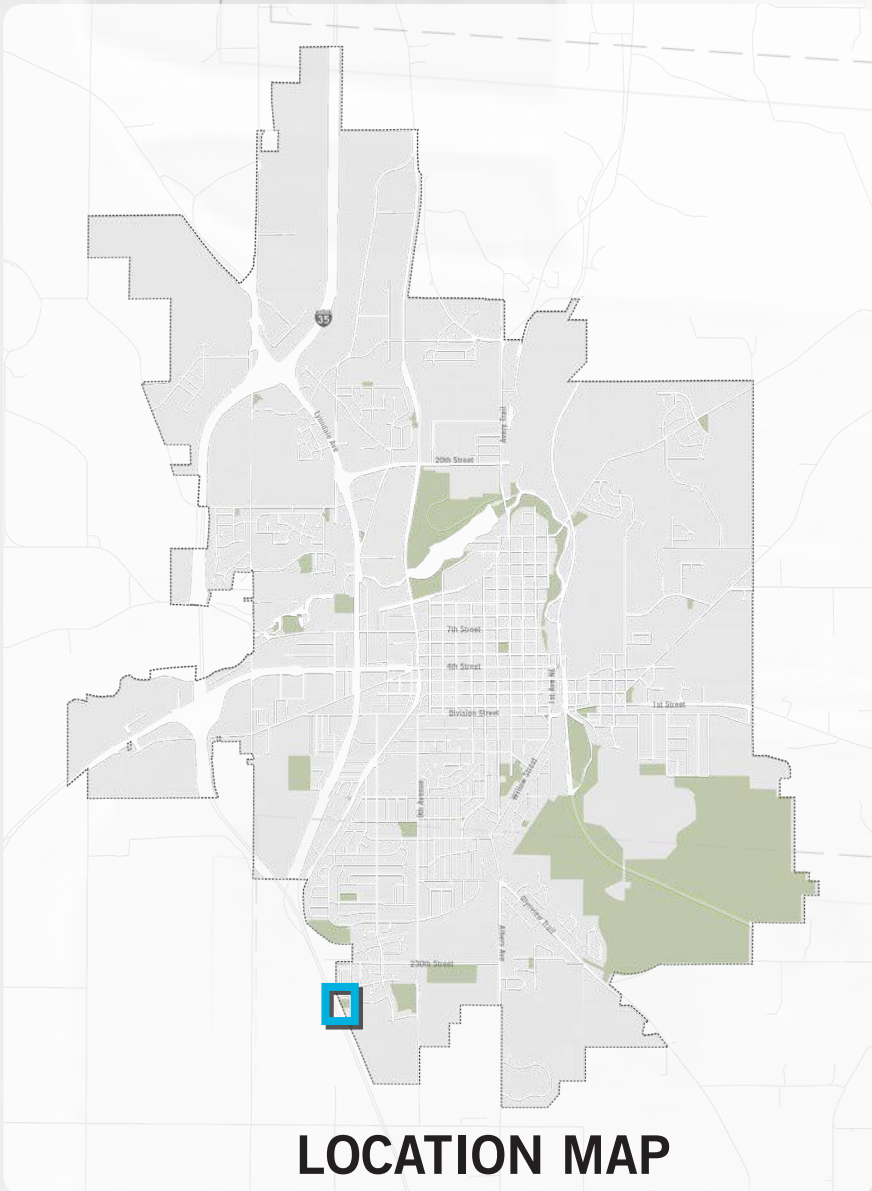


**LEGEND**

- 1 PLAYGROUND
- 2 PICNIC AREA
- 3 OPEN LAWN
- 4 NATURE PLAY
- 5 SLACK LINE
- 6 PRAIRIE



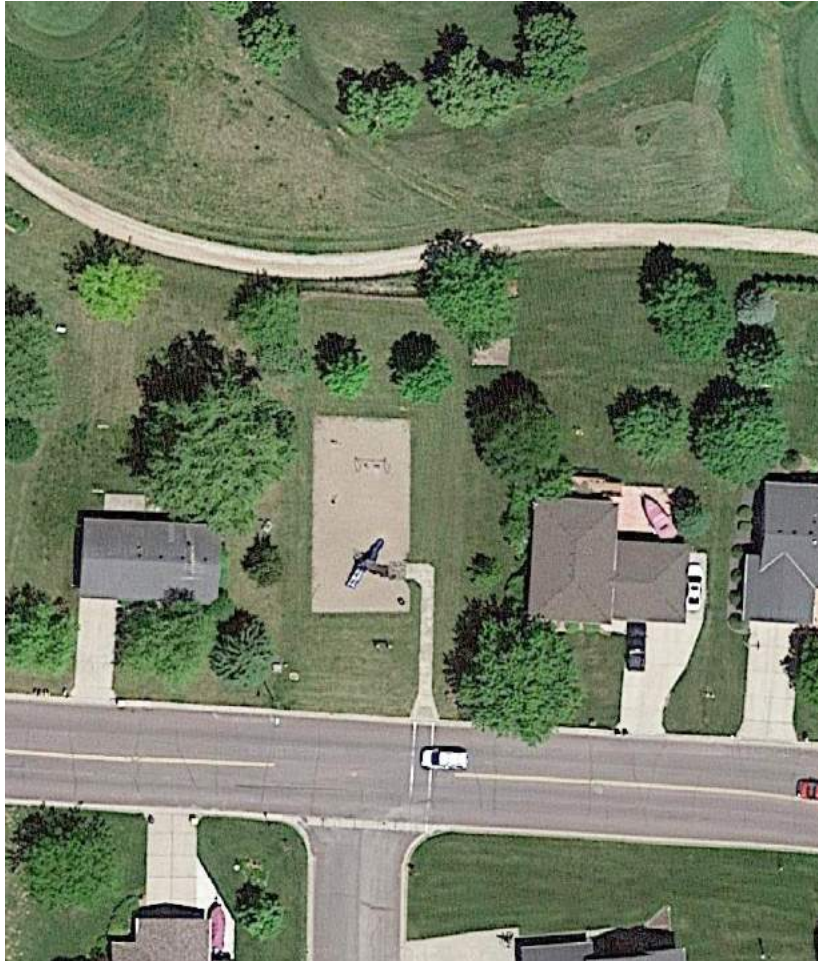
WESTWOOD DR



LOCATION MAP



# WHIPPLE HEIGHTS PARK



**LOCATION :** 1700 Shumway Avenue

**SIZE :** 0.20 acres

**CLASSIFICATION :** Neighborhood Park/Playground

**REC CENTER :** No

**SCHOOL CONNECTIONS :** None

**CURRENT PROJECTS:** None



## CONTEXT

This small, neighborhood park is directly adjacent to Legacy Golf Course. A fence separates the park from the golf course's pedestrian path.

## CURRENT CONDITIONS AND CONCERNS

Whipple Heights Park is well maintained but could use upgrades to increase its longevity. It has limited pedestrian circulation as well.

## PARK FACILITY CONDITIONS (SITE VERIFIED)

● GOOD ● FAIR ● POOR

● PLAYGROUND

● PICNIC AREAS

## SEASONAL AMENITIES

● HIGH USE ● LIMITED ● LOW USE

● SPRING

● FALL

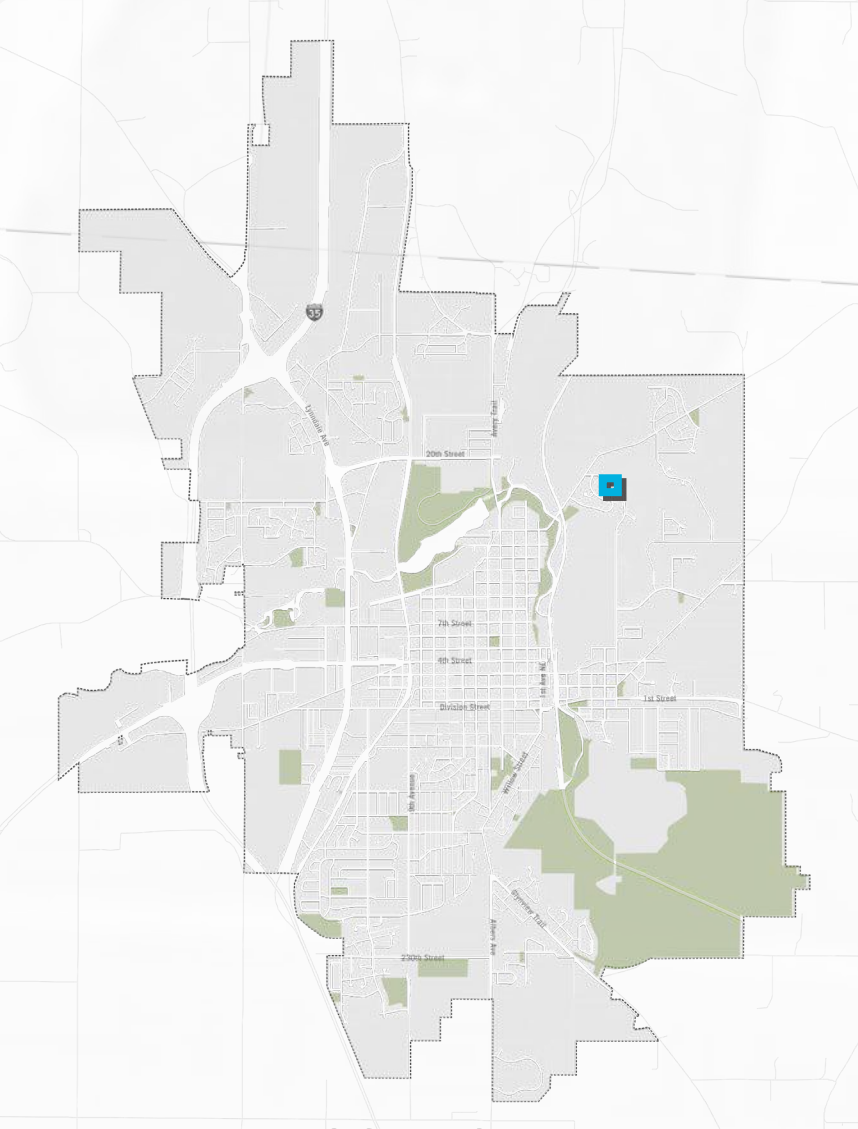
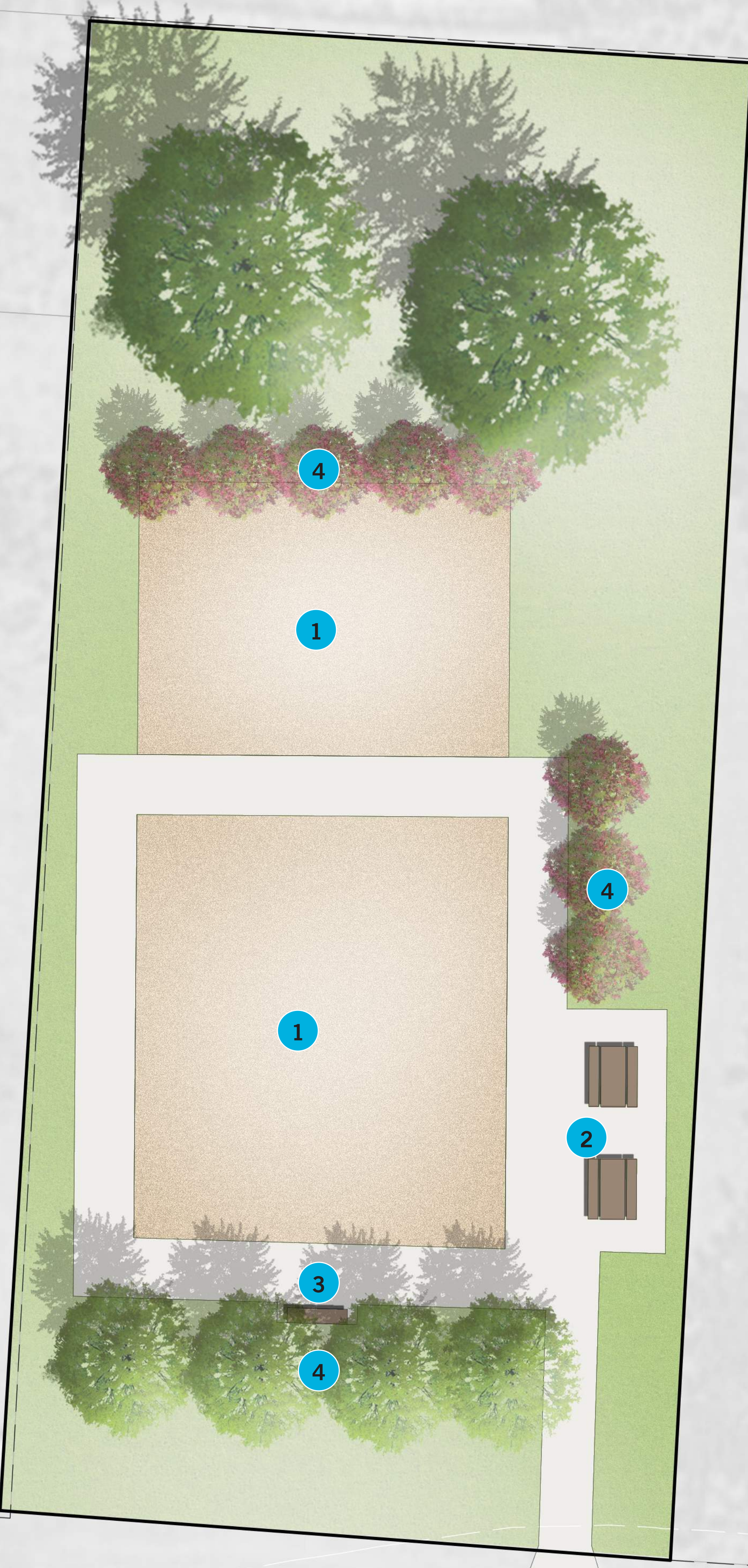
● SUMMER

● WINTER



**LEGEND**

- 1 PLAYGROUND
- 2 PICNIC AREA
- 3 SEATING \
- 4 IMPROVED LANDSCAPING



LOCATION MAP



# WINDSOR PARK



**LOCATION :** 1600 Greenwood Place

**SIZE :** 2.90 acres

**CLASSIFICATION :** Neighborhood Park/Playground

**REC CENTER :** No

**SCHOOL CONNECTIONS :** None

**CURRENT PROJECTS:** None



## CONTEXT

Windsor Park is a highly used neighborhood park on the south side of Faribault. It is accessed by single family and multi family homes in the surrounding area. This park has a few different amenities and offers a range of activities.

## CURRENT CONDITIONS AND CONCERNS

Much of park facilities are degraded and need improvements. The basketball hoops have been removed. The play area is aging. Large mature trees are an asset to the park and provide a nice amount of shade.

## PARK FACILITY CONDITIONS (SITE VERIFIED)

● GOOD ● FAIR ● POOR

● PLAYGROUND

● PICNIC AREAS

● SAND VOLLEYBALL

● BASKETBALL COURTS

## SEASONAL AMENITIES

● HIGH USE ● LIMITED ● LOW USE

● SPRING

● FALL

● SUMMER

● WINTER



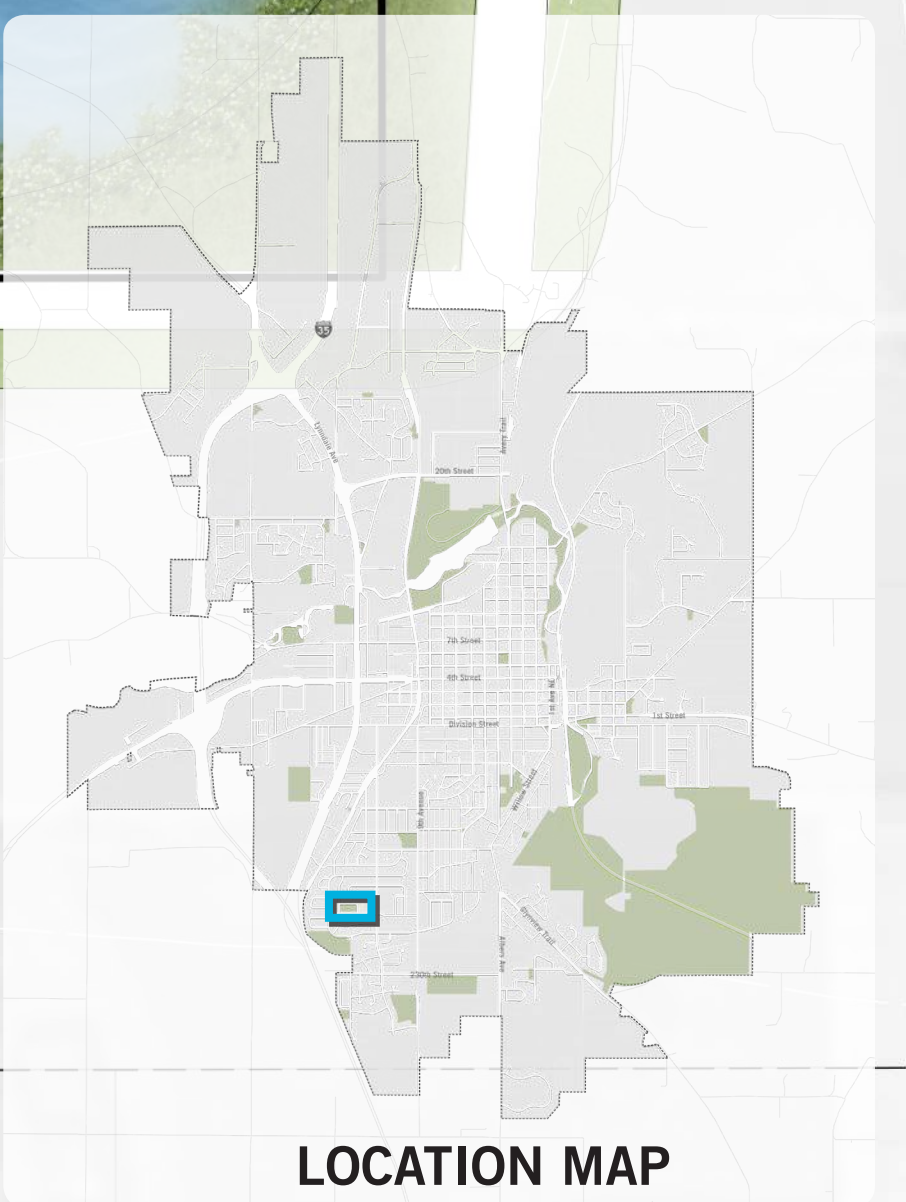
# LEGEND

- 1 PLAYGROUND
- 2 PICNIC SHELTER WITH RESTROOM
- 3 PICKLEBALL
- 4 SPORTS COURT
- 5 PUBLIC ART
- 6 OPEN LAWN/SKATING
- 7 PICNIC SHELTER
- 8 STORMWATER
- 9 WORKOUT CIRCUIT
- 10 PICNIC TABLE

WESTWOOD DR

WINDSOR PL

GREENWOOD PL



LOCATION MAP