

# TEEPEE TONKA PARK



**LOCATION :** 10 3rd Avenue NE



**SIZE :** 25.3 acres

**CLASSIFICATION :** Community Park/Playfield

**REC CENTER :** No

**SCHOOL CONNECTIONS :** None

**CURRENT PROJECTS:** None

## CONTEXT

This sports-focused park facility is located a quarter mile from downtown Faribault along the Straight River. It is directly adjacent to the River Bend Nature Center and connected to the nature center's trail system. The elevated railroad adjacent to the western edge of the park, the river lying to the east and south, and the low topography makes this park disconnected from the surrounding city and residential communities. The surrounding natural features, including the river and nature center, offer unique opportunities in the parks for park programming.

## CURRENT CONDITIONS AND CONCERNS

The park is generally in good condition with well maintained fields and diamonds.

The park is located within the floodplain and has been seriously flooded during the spring over the past 5 years. After each flood period, the park features need to be rebuilt and needs considerable resources to maintain.

There is significant erosion along the banks of the Straight River. This creates a safety hazard at several highly trafficked locations and limits the planned access to the river.

## PARK FACILITY CONDITIONS (SITE VERIFIED)

● GOOD ● FAIR ● POOR

● PICNIC AREAS

● CANOE LANDING

● PICNIC SHELTER

● RIVER/PONDS

● RESTROOM

● ARCHERY RANGE

● SOCCER/RUGBY FIELD

● BASEBALL/SOFTBALL FIELDS

● NATURE AREAS

## SEASONAL AMENITIES

● HIGH USE ● LIMITED ● LOW USE

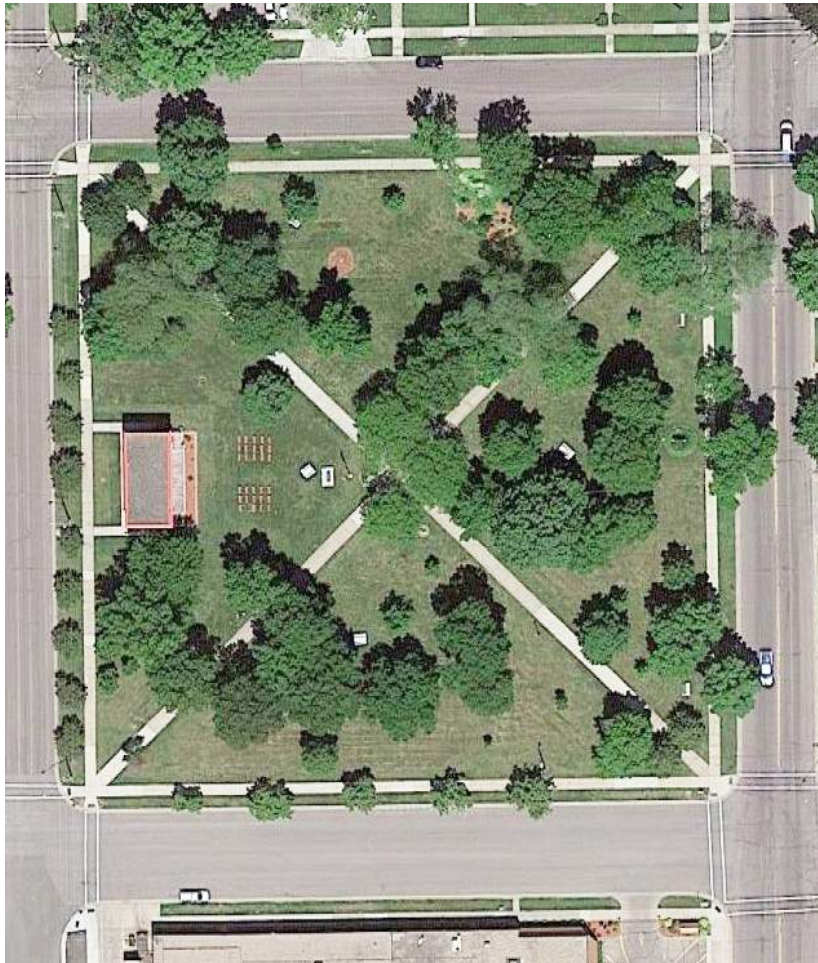
● SPRING

● FALL

● SUMMER

● WINTER

# CENTRAL PARK



**LOCATION :** 510 NW 2nd Avenue



**SIZE :** 2.5 acres

**CLASSIFICATION :** Community Park/Playfield

**REC CENTER :** No

**SCHOOL CONNECTIONS :** None

**CURRENT PROJECTS:** None

## CONTEXT

This historic park is located downtown and within walking distance to the 200 and 300 block of Central Ave. Central Park hosts the Faribault Heritage Days and other community events. Farmers' Markets are held during the summer and fall on Wednesdays and Saturdays.

## CURRENT CONDITIONS AND CONCERNS

Overall the park is in good condition and well maintained. The gardens and mature trees appear to be healthy. There is adequate power to support larger events. The picnic areas do not meet ADA accessibility. The band shell and performance area are in very good condition but have a limited amount of space for seating. The rear of the band shell is visible to neighbors and could use a buffer or visual improvement.

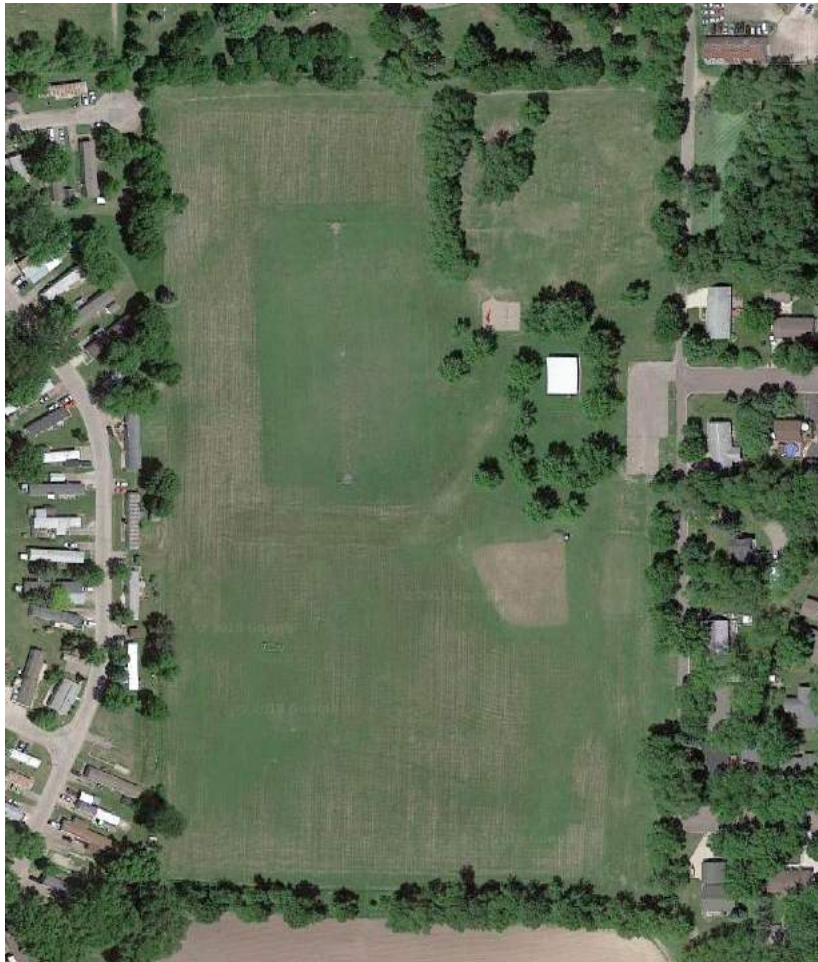
## PARK FACILITY CONDITIONS (SITE VERIFIED)

- GOOD ● FAIR ● POOR
- POWER FOR LARGER EVENTS
- PICNIC AREAS
- RESTROOM
- BAND SHELL

## SEASONAL AMENITIES

- HIGH USE ● LIMITED ● LOW USE
- SPRING ● FALL
- SUMMER ● WINTER

# MAPLE LAWN PARK



**LOCATION :** 500 Maple Lawn Cartway



**SIZE :** 18.0 acres

**CLASSIFICATION :** Community Park/Playfield

**REC CENTER :** No

**SCHOOL CONNECTIONS :** None

**CURRENT PROJECTS:** None

## CONTEXT

Maple Lawn Park is located in the southwest corner of the City of Faribault and adjacent to the major thoroughfare, Lyndale Ave S. Access to the park can be challenging due to lack of signage on Lyndale Ave S and the winding neighborhood street used for vehicular access. Maple Lawn Ave is a one-way and creates challenging vehicular traffic flow. The park is bordered to the east by a small, single family residential neighborhood and to the west by Evergreen Estates, a manufactured home community. Maple Lawn Cemetery borders the north, and agricultural fields to the south.

## CURRENT CONDITIONS AND CONCERNS

The overall condition of the park is fair to poor. Large athletic fields appear to be well maintained but many areas appear to be susceptible to flooding and settling due to inadequate drainage. None of the park features, including the parking lot, meet ADA guidelines. The picnic shelter and playground are in poor condition. The horseshoe area appears to be recently renovated and in good, working condition.

## PARK FACILITY CONDITIONS (SITE VERIFIED)

● GOOD ● FAIR ● POOR

- |                  |                      |
|------------------|----------------------|
| ● PLAYGROUND     | ● FOOTBALL FIELD     |
| ● PICNIC AREAS   | ● SOCCER/RUGBY FIELD |
| ● PICNIC SHELTER | ● SOFTBALL FIELD     |
| ● HORSESHOES     | ● BASKETBALL COURT   |

## SEASONAL AMENITIES

● HIGH USE ● LIMITED ● LOW USE

- |          |          |
|----------|----------|
| ● SPRING | ● FALL   |
| ● SUMMER | ● WINTER |

# NORTH ALEXANDER PARK



**LOCATION :** 1810 2nd Avenue NW



**SIZE :** 131.1 acres

**CLASSIFICATION :** Community Park/Playfield

**REC CENTER :** No

**SCHOOL CONNECTIONS :** None

**CURRENT PROJECTS:** None

## CONTEXT

North Alexander Park is a premier, destination athletic park in Faribault. Located north of the Cannon River Reservoir, the park is adjacent to and has views of the historic Faribault Woolen Mill. The Faribault Family Aquatic Center and Rice County Fairgrounds border the north side of the park as well. This park hosts many of the City's athletic tournaments. It also has the largest play area in Faribault.

## CURRENT CONDITIONS AND CONCERNS

This park is well maintained and is generally in good condition. The fencing and ball fields are in good condition and operate well for the community. The play area is also in good condition and has two age-separated play equipment areas. They share a container. The buildings are also well maintained and heavily used. Some picnic shelters are aging and should be replaced or renovated. Many areas of the park, including the play containers, swings, and picnic areas do not meet ADA guidelines.

## PARK FACILITY CONDITIONS (SITE VERIFIED)

● GOOD ● FAIR ● POOR

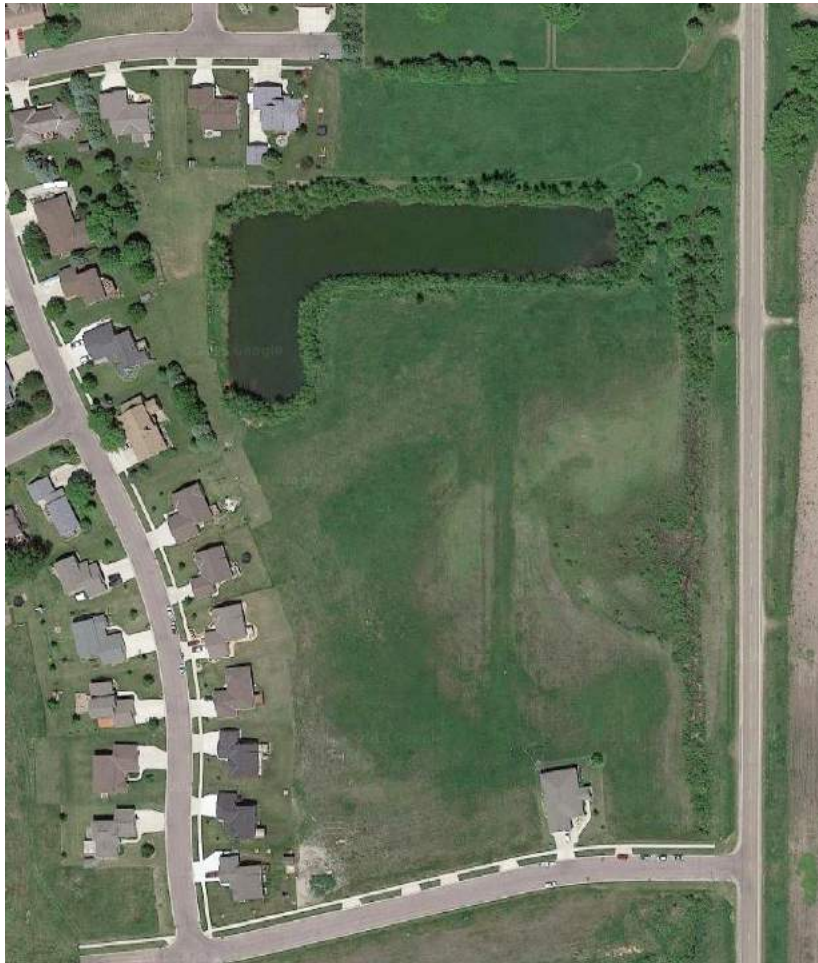
- |                   |                   |
|-------------------|-------------------|
| ● PLAYGROUND      | ● BASEBALL FIELD  |
| ● PICNIC AREAS    | ● SOFTBALL FIELD  |
| ● PICNIC SHELTER  | ● HOCKEY ARENA    |
| ● RESTROOM        | ● TRAILS          |
| ● AQUATIC CENTER  | ● FOOD & BEVERAGE |
| ● SAND VOLLEYBALL | ● RIVER/PONDS     |
| ● FOOTBALL FIELDS | ● PARK & RIDE     |

## SEASONAL AMENITIES

● HIGH USE ● LIMITED ● LOW USE

- |          |          |
|----------|----------|
| ● SPRING | ● FALL   |
| ● SUMMER | ● WINTER |

# PRAIRIE RIDGE PARK



**LOCATION :** 2000 9th Avenue SW

**SIZE :** 13.7 acres

**CLASSIFICATION :** Community Park/Playfield

**REC CENTER :** No

**SCHOOL CONNECTIONS :** None

**CURRENT PROJECTS:** None



## CONTEXT

Prairie Ridge Park is located in the southern most region of Faribault, east of Highway 35. The Faribault Soccer Complex is just east of the site and agricultural fields border the south and southeast areas of the park. The park is located in a single family residential neighborhood.

## CURRENT CONDITIONS AND CONCERNS

Currently, this park is open, mowed area with no vegetation or programming.

## PARK FACILITY CONDITIONS (SITE VERIFIED)

● GOOD ● FAIR ● POOR

## SEASONAL AMENITIES

● HIGH USE ● LIMITED ● LOW USE

● SPRING ● FALL

● SUMMER ● WINTER

# SLEVIN PARK



**LOCATION :** 1602 2nd Avenue NW

**SIZE :** 2.9 acres

**CLASSIFICATION :** Community Park/Playfield

**REC CENTER :** No

**SCHOOL CONNECTIONS :** None

**CURRENT PROJECTS:** None



## CONTEXT

This park is located on the northeast edge of the Cannon River Reservoir and is adjacent to the dam. Slevin Park also has pedestrian access to North Alexander Park and Two Rivers Park.

## CURRENT CONDITIONS AND CONCERNS

Slevin Park has well maintained open lawn space and healthy, mature trees. Access to the river can be precarious and the park does host a lot of fishing activity at the dam. The picnic shelter is well maintained but aging. The park does not meet ADA guidelines.

## PARK FACILITY CONDITIONS (SITE VERIFIED)

● GOOD ● FAIR ● POOR

● PICNIC AREAS

● PICNIC SHELTER

● TRAILS

● RIVER/PONDS

## SEASONAL AMENITIES

● HIGH USE ● LIMITED ● LOW USE

● SPRING

● FALL

● SUMMER

● WINTER

# SOUTH ALEXANDER PARK



**LOCATION :** 1010 7th Avenue NW



**SIZE :** 17.3 acres

**CLASSIFICATION :** Community Park/Playfield

**REC CENTER :** No

**SCHOOL CONNECTIONS :** None

**CURRENT PROJECTS:** None

## CONTEXT

South Alexander Park is on the southwest edge of the Cannon River Reservoir. To the east of the park is Jennie-O Turkey Store. Two active railroads run along the south and west sides of the park. North Alexander park is just north of the park but there is no pedestrian access.

## CURRENT CONDITIONS AND CONCERNS

The park is well maintained and has beautiful views of the Cannon River Reservoir. There are also healthy, mature trees throughout the site. The horseshoe facilities are in good condition, as is the BMX track and canoe landing. The picnic shelter is well maintained but aging. The play area does not meet ADA requirements.

## PARK FACILITY CONDITIONS (SITE VERIFIED)

● GOOD ● FAIR ● POOR

- |                  |                  |
|------------------|------------------|
| ● PLAYGROUND     | ● BMX BIKE TRACK |
| ● PICNIC AREAS   | ● PUBLIC ACCESS  |
| ● PICNIC SHELTER | ● CANOE LANDING  |
| ● RESTROOM       | ● RIVER/PONDS    |
| ● HORSESHOES     |                  |

## SEASONAL AMENITIES

● HIGH USE ● LIMITED ● LOW USE

- |          |          |
|----------|----------|
| ● SPRING | ● FALL   |
| ● SUMMER | ● WINTER |

# TWO RIVERS PARK



**LOCATION :** 1815 2nd Avenue NW



**SIZE :** 23.4 acres

**CLASSIFICATION :** Community Park/Playfield

**REC CENTER :** No

**SCHOOL CONNECTIONS :** None

**CURRENT PROJECTS:** None

## CONTEXT

This nature-based park has pedestrian connections to North Alexander Park and Slevin Park. It is uniquely located at the junction of the Cannon River and Straight River and has beautiful views of both rivers and surrounding wildlife. Two Rivers Park also has connections to the Sakatah Singing Hills State Trail and Straight River State Trail.

## CURRENT CONDITIONS AND CONCERNS

Two Rivers Park is generally in good condition and well maintained. The picnic shelter is in good condition but needs improvements to the concrete pad and picnic tables under it. Generally the trails are in good shape. The fishing platform is well maintained but aging.

## PARK FACILITY CONDITIONS (SITE VERIFIED)

● GOOD ● FAIR ● POOR

● PICNIC AREAS

● PICNIC SHELTER

● TRAILS

● FISHING PIER

● CANOE LANDING

● RIVER/PONDS

## SEASONAL AMENITIES

● HIGH USE ● LIMITED ● LOW USE

● SPRING

● SUMMER

● FALL

● WINTER



# WAPACUTA PARK



**LOCATION :** 705 3rd Avenue SW



**SIZE :** 8.5 acres

**CLASSIFICATION :** Community Park/Playfield

**REC CENTER :** No

**SCHOOL CONNECTIONS :** None

**CURRENT PROJECTS:** None

## CONTEXT

Wapacuta park is located about a half mile southwest of Downtown Faribault and is adjacent to Garfield Park. The park is surrounded by single-family and multifamily housing. It is also within walking distance of Bethlehem Academy and Divine Mercy Catholic School.

## CURRENT CONDITIONS AND CONCERNS

While the park is well maintained, it has aging facilities. The large, mature trees appear to be healthy.

## PARK FACILITY CONDITIONS (SITE VERIFIED)

● GOOD ● FAIR ● POOR

● PLAYGROUND

● PICNIC AREAS

● PICNIC SHELTER

● RESTROOM

● BASKETBALL COURTS

● TRAILS

● DISC GOLF

## SEASONAL AMENITIES

● HIGH USE ● LIMITED ● LOW USE

● SPRING

● SUMMER

● FALL

● WINTER

# CONLIFFE GREENWAY



**LOCATION :** 811 Conliffe Avenue SW

**SIZE :** 0.25 acres

**CLASSIFICATION :** Linear Park

**REC CENTER :** No

**SCHOOL CONNECTIONS :** None

**CURRENT PROJECTS:** None



## CONTEXT

Conliffe Greenway is centrally located in Faribault. It is adjacent to South Central College and east of Lyndale Ave.

## CURRENT CONDITIONS AND CONCERNS

There are currently no amenities in this greenway.

## PARK FACILITY CONDITIONS (SITE VERIFIED)

● GOOD ● FAIR ● POOR

## SEASONAL AMENITIES

● HIGH USE ● LIMITED ● LOW USE

● SPRING ● FALL  
● SUMMER ● WINTER

# DOFFITT GREENWAY



**LOCATION :** 900 4th Avenue SW

**SIZE :** 0.16 acres

**CLASSIFICATION :** Linear Park

**REC CENTER :** No

**SCHOOL CONNECTIONS :** None

**CURRENT PROJECTS:** None



## CONTEXT

Doffitt Greenway is located in the southern half of Faribault in a single family residential neighborhood.

## CURRENT CONDITIONS AND CONCERNS

There are currently no amenities in this greenway.

## PARK FACILITY CONDITIONS (SITE VERIFIED)

● GOOD ● FAIR ● POOR

## SEASONAL AMENITIES

● HIGH USE ● LIMITED ● LOW USE

● SPRING ● FALL

● SUMMER ● WINTER

# FIRST AVENUE GREENWAY



**LOCATION :** 500 1st Avenue NE

**SIZE :** 1.60 acres

**CLASSIFICATION :** Linear Park

**REC CENTER :** No

**SCHOOL CONNECTIONS :** None

**CURRENT PROJECTS:** None



## CONTEXT

This greenway is located on the north end of the Downtown and adjacent to the old public works building. It has views of the Straight River and is across the street from the Straight River Trail.

## CURRENT CONDITIONS AND CONCERNS

There are currently no amenities in this greenway.

## PARK FACILITY CONDITIONS (SITE VERIFIED)

● GOOD ● FAIR ● POOR

● FLOWER GARDEN

## SEASONAL AMENITIES

● HIGH USE ● LIMITED ● LOW USE

● SPRING ● FALL

● SUMMER ● WINTER

# HARTMAN PARK



**LOCATION :** 100 Lind St

**SIZE :** 0.25 acres

**CLASSIFICATION :** Linear Park

**REC CENTER :** No

**SCHOOL CONNECTIONS :** None

**CURRENT PROJECTS:** None



## CONTEXT

Hartman Greenway is located on the southeast side of Faribault. It is within walking distance from the Straight River State Trail.

## CURRENT CONDITIONS AND CONCERNS

There are currently no amenities in this greenway.

## PARK FACILITY CONDITIONS (SITE VERIFIED)

● GOOD ● FAIR ● POOR

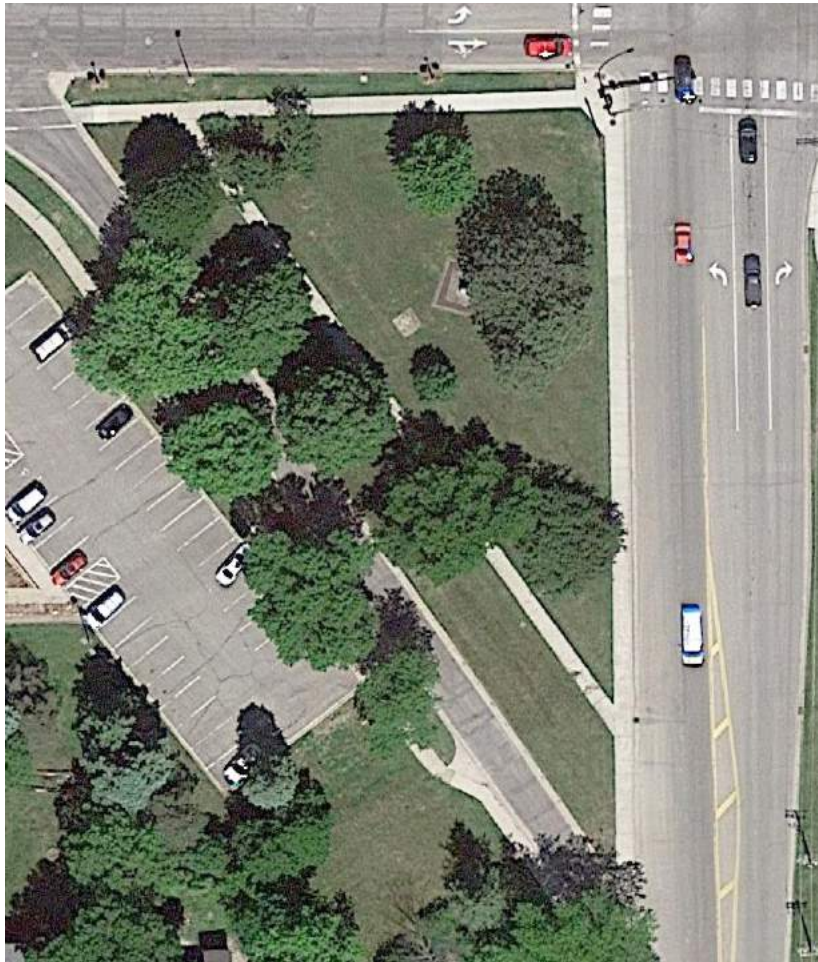
## SEASONAL AMENITIES

● HIGH USE ● LIMITED ● LOW USE

● SPRING ● FALL

● SUMMER ● WINTER

# PEACE PARK



**LOCATION :** 1 Park Place

**SIZE :** 0.30 acres

**CLASSIFICATION :** Linear Park

**REC CENTER :** No

**SCHOOL CONNECTIONS :** None

**CURRENT PROJECTS:** None



## CONTEXT

Peace Park is located on the southern edge of Downtown, just east of the Buckham Memorial Library. It has views of the viaduct and is just west of the Straight River State Trail.

## CURRENT CONDITIONS AND CONCERNS

This park is well maintained. It has one statue in the center with an adjacent walkway.

## PARK FACILITY CONDITIONS (SITE VERIFIED)

● GOOD ● FAIR ● POOR

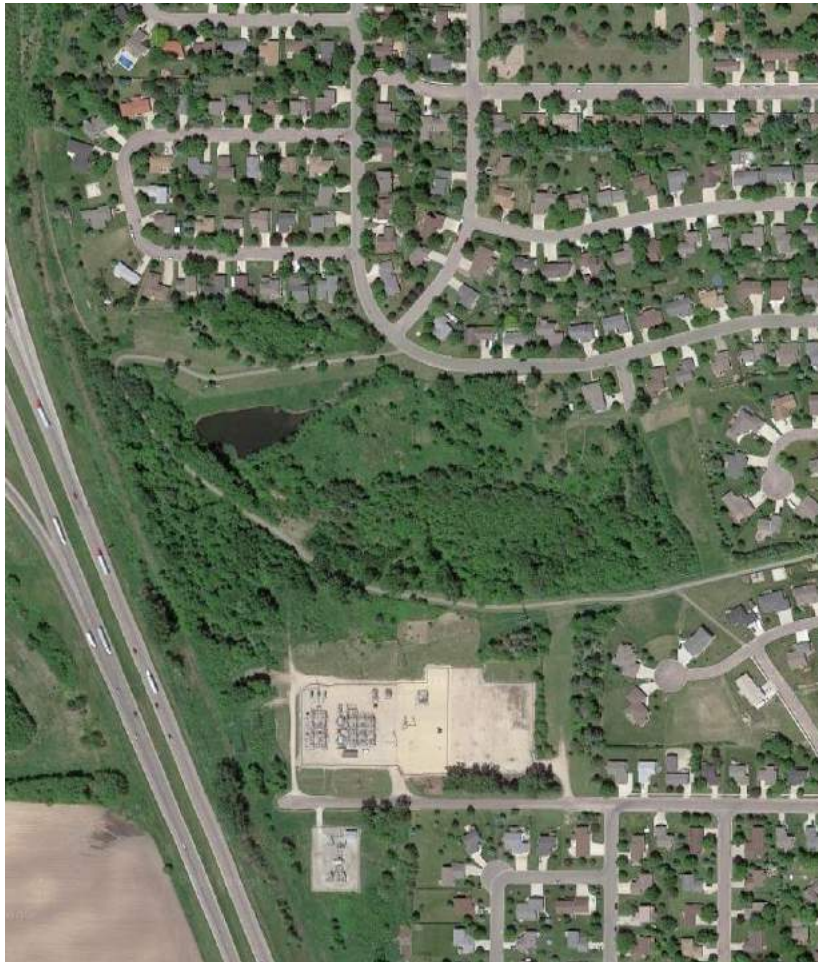
## SEASONAL AMENITIES

● HIGH USE ● LIMITED ● LOW USE

● SPRING ● FALL

● SUMMER ● WINTER

# SPRING PARK & GREENWAY



**LOCATION :** 1701 Springwood Lane

**SIZE :** 14.8 acres

**CLASSIFICATION :** Linear Park

**REC CENTER :** No

**SCHOOL CONNECTIONS :** None

**CURRENT PROJECTS:** None

## CONTEXT

This nature based park is located on the east side of Highway 35, on the south side of Faribault. It serves as an amenity for a single family residential neighborhood.

## CURRENT CONDITIONS AND CONCERNS

The trails are well maintained but are in need of repair in some locations. Much of the nature area is in good condition.

## PARK FACILITY CONDITIONS (SITE VERIFIED)

● GOOD ● FAIR ● POOR

● TRAILS

● NATURE AREAS

## SEASONAL AMENITIES

● HIGH USE ● LIMITED ● LOW USE

● SPRING

● FALL

● SUMMER

● WINTER

# STRAIGHT RIVER PARK



**LOCATION :** 801 Short Avenue

**SIZE :** 28.7 acres

**CLASSIFICATION :** Linear Park

**REC CENTER :** No

**SCHOOL CONNECTIONS :** None

**CURRENT PROJECTS:** None



## CONTEXT

This nature based park is located just south of Teepee Tonka Park and northwest of River Bend Nature Center. It has beautiful views of the Straight River and unique nature trails that wind throughout the park. The Straight River Trail winds through the park as well.

## CURRENT CONDITIONS AND CONCERNS

The trails are well maintained but need repair in some locations.

## PARK FACILITY CONDITIONS (SITE VERIFIED)

● GOOD ● FAIR ● POOR

● TRAILS

● RIVER/PONDS

## SEASONAL AMENITIES

● HIGH USE ● LIMITED ● LOW USE

● SPRING

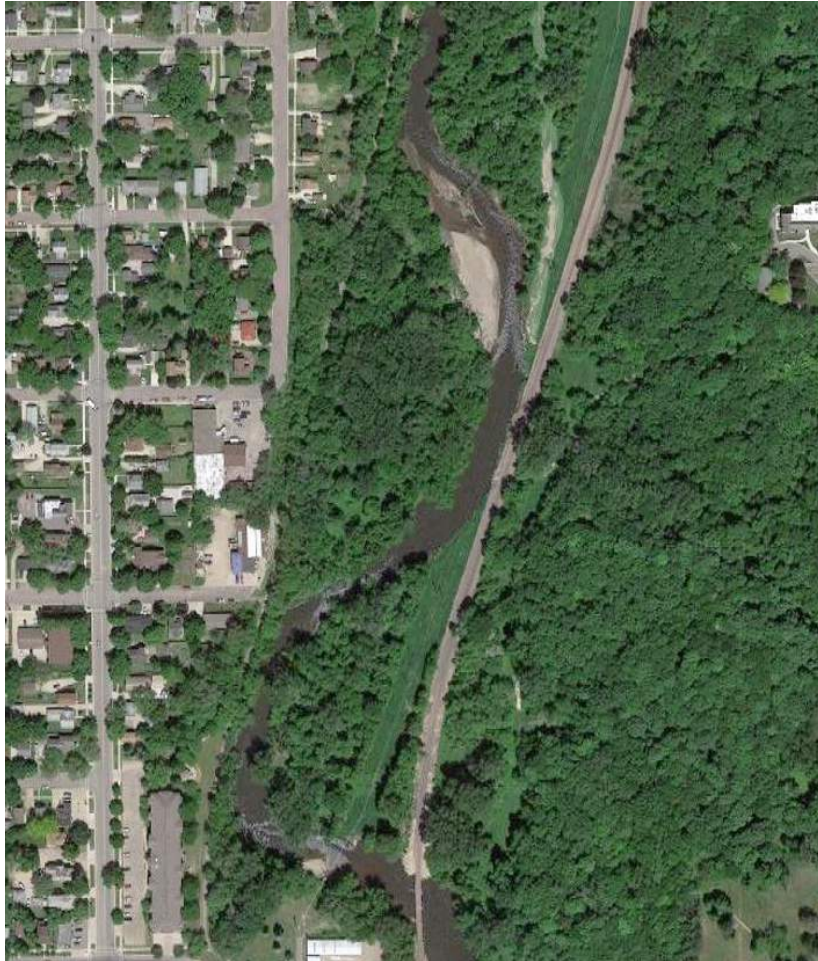
● FALL

● SUMMER

● WINTER



# TRAILS EDGE PARK



**LOCATION :** 725 Central Avenue

**SIZE :** 8.7 acres

**CLASSIFICATION :** Linear Park

**REC CENTER :** No

**SCHOOL CONNECTIONS :** None

**CURRENT PROJECTS:** None



## CONTEXT

Trails Edge Park is situated next to the Straight River and just north of Downtown. The Straight River Trail runs through the park. The Rice County Activity Center is directly adjacent on the west side of the park. An active railroad runs along the east side of the park.

## CURRENT CONDITIONS AND CONCERNS

The paved and nature trails are in good condition and well maintained.

## PARK FACILITY CONDITIONS (SITE VERIFIED)

● GOOD ● FAIR ● POOR

● TRAILS

● RIVER/PONDS

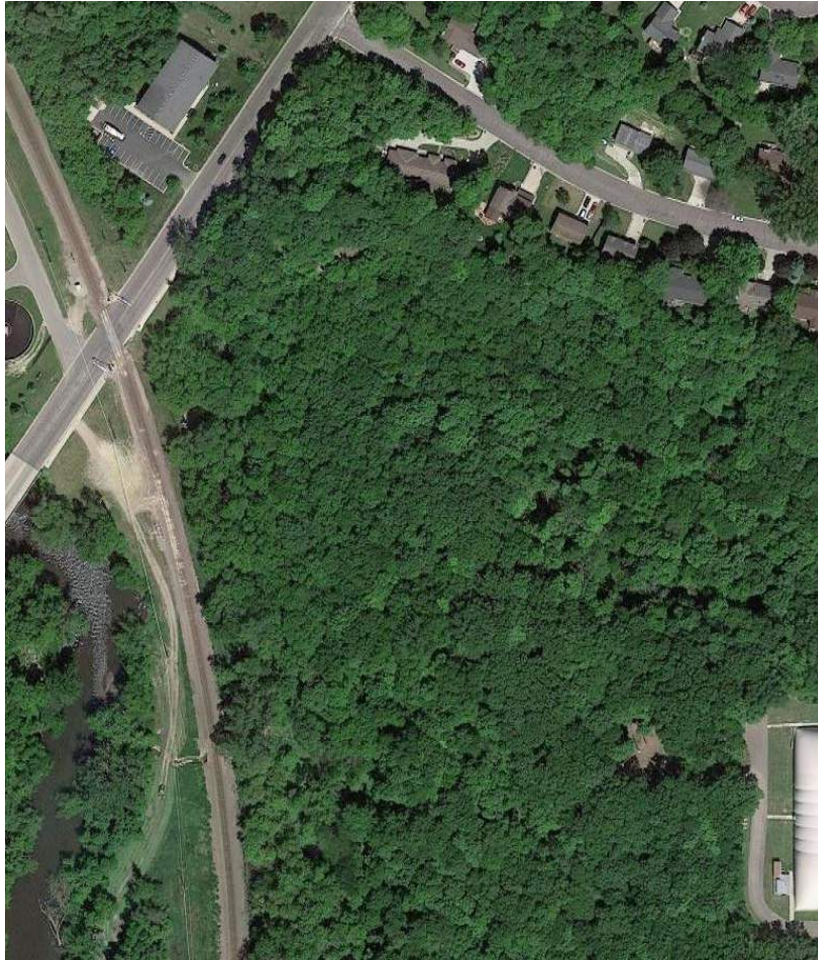
## SEASONAL AMENITIES

● HIGH USE ● LIMITED ● LOW USE

● SPRING ● FALL

● SUMMER ● WINTER

# WHIPPLE HEIGHTS GREENWAY



**LOCATION :** 1695 14th St NE

**SIZE :** 3.35 acres

**CLASSIFICATION :** Linear Park

**REC CENTER :** No

**SCHOOL CONNECTIONS :** None

**CURRENT PROJECTS:** None



## CONTEXT

This greenway is located on the east side of the Straight River, just northwest of Shattuck-St. Mary's Sports Complex. An active railroad runs along the west side as well.

## CURRENT CONDITIONS AND CONCERNS

There are currently no amenities in this park.

## PARK FACILITY CONDITIONS (SITE VERIFIED)

● GOOD ● FAIR ● POOR

● PICNIC TABLES

## SEASONAL AMENITIES

● HIGH USE ● LIMITED ● LOW USE

● SPRING ● FALL

● SUMMER ● WINTER

# WILLOW GREENWAY



**LOCATION :** 901 3rd Avenue SW



**SIZE :**

**CLASSIFICATION :** Linear Park

**REC CENTER :** No

**SCHOOL CONNECTIONS :** None

**CURRENT PROJECTS:** None

## CONTEXT

Willow Greenway is located on the southeast side of Faribault and is situated in a single family and multi family residential neighborhood.

## CURRENT CONDITIONS AND CONCERNS

There are currently no amenities in this greenway.

## PARK FACILITY CONDITIONS (SITE VERIFIED)

● GOOD ● FAIR ● POOR

## SEASONAL AMENITIES

● HIGH USE ● LIMITED ● LOW USE

● SPRING ● FALL

● SUMMER ● WINTER

# BATCHELDER PARK



**LOCATION :** 2321 Kennedy Drive

**SIZE :** 1.80 acres

**CLASSIFICATION :** Neighborhood Park/Playground

**REC CENTER :** No

**SCHOOL CONNECTIONS :** None

**CURRENT PROJECTS:** None



## CONTEXT

Batchelder Park is located near the north side of Faribault. It serves as a neighborhood park near single family homes. A city trail and active railroad border the east side of the park.

## CURRENT CONDITIONS AND CONCERNS

While the park is generally well maintained, the play equipment and picnic areas are aging. The park does not meet ADA guidelines. Large, mature trees provide a nice buffer to the railroad.

## PARK FACILITY CONDITIONS (SITE VERIFIED)

● GOOD ● FAIR ● POOR

● PLAYGROUND

● PICNIC AREAS

● TRAILS

## SEASONAL AMENITIES

● HIGH USE ● LIMITED ● LOW USE

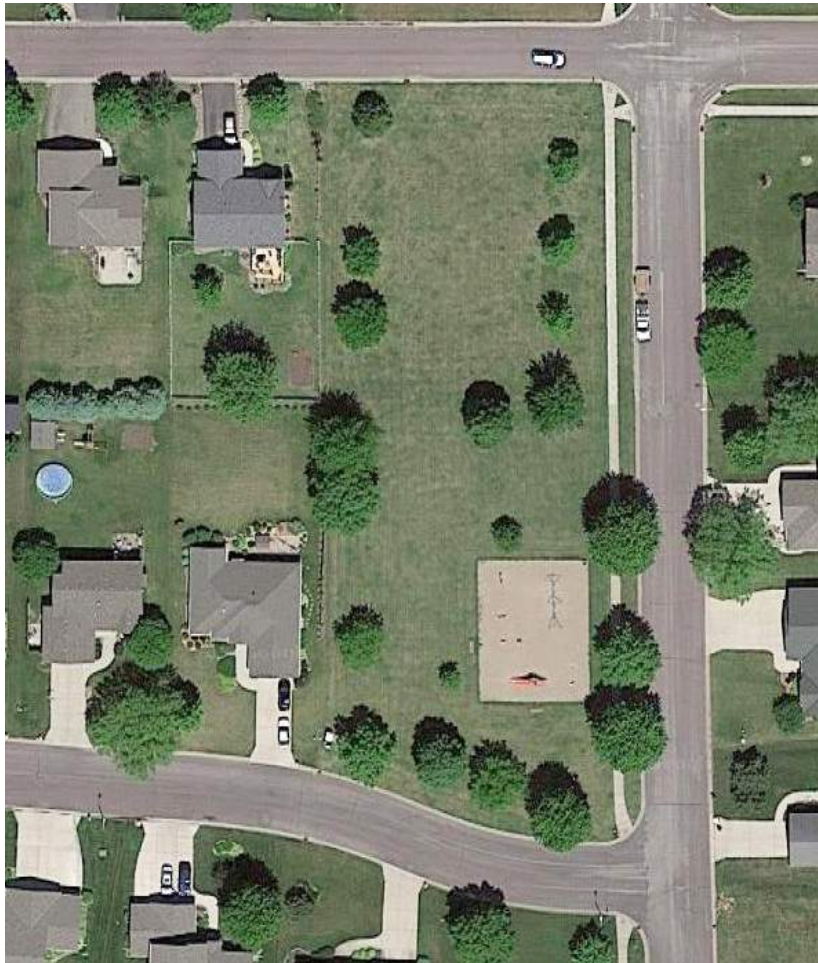
● SPRING

● FALL

● SUMMER

● WINTER

# BLUEBIRD PARK



**LOCATION :** 1700 Sunbird Drive

**SIZE :** 1.20 acres

**CLASSIFICATION :** Neighborhood Park/Playground

**REC CENTER :** No

**SCHOOL CONNECTIONS :** None

**CURRENT PROJECTS:** None



## CONTEXT

This neighborhood park is located on the southwest side of River Bend Nature Center. A city trail is within walking distance to the park. Meadow Ridge Memorial Cemetary is near the park as well.

## CURRENT CONDITIONS AND CONCERNS

The park is well maintained but the play equipment is aging. The park does not meet ADA guidelines.

## PARK FACILITY CONDITIONS (SITE VERIFIED)

● GOOD ● FAIR ● POOR

● PLAYGROUND

● PICNIC AREAS

## SEASONAL AMENITIES

● HIGH USE ● LIMITED ● LOW USE

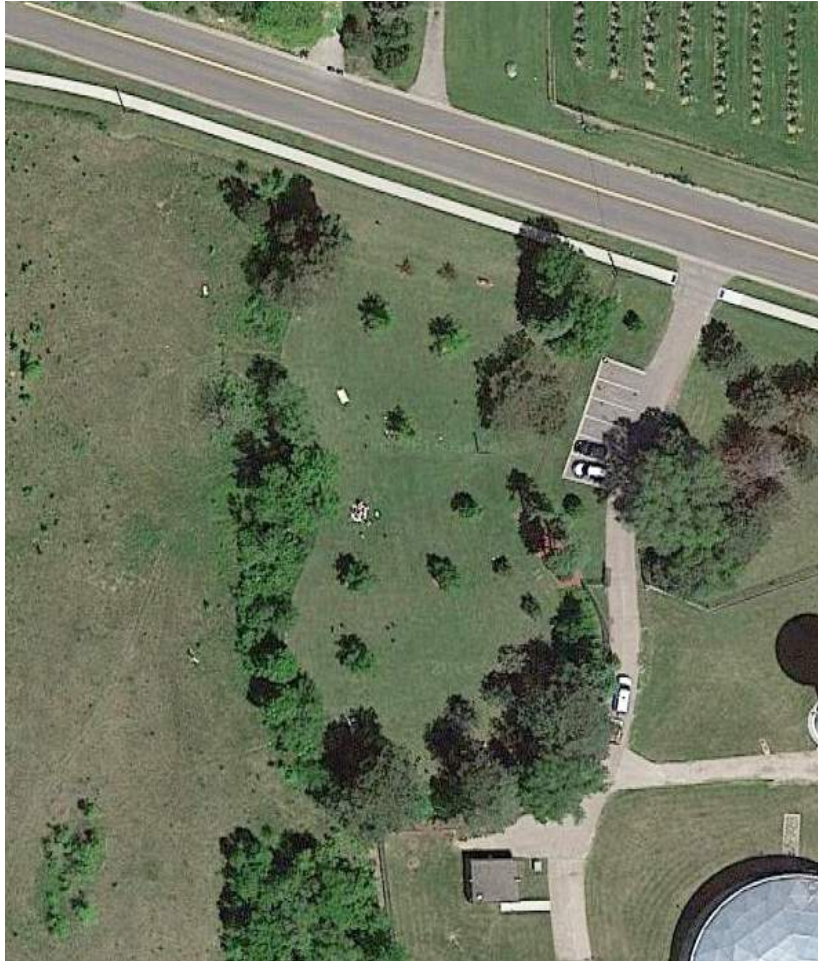
● SPRING

● FALL

● SUMMER

● WINTER

# CITY VIEW PARK



**LOCATION :** 1225 Parshall Street

**SIZE :** 2.0 acres

**CLASSIFICATION :** Neighborhood Park/Playground

**REC CENTER :** No

**SCHOOL CONNECTIONS :** None

**CURRENT PROJECTS:** None



## CONTEXT

City View Park is on the east side of Faribault. It is located on top of a hill and has long views of the City. A municipal water tower sits behind the park.

## CURRENT CONDITIONS AND CONCERNS

The park is well maintained but does not currently have any facilities.

## PARK FACILITY CONDITIONS (SITE VERIFIED)

● GOOD ● FAIR ● POOR

● PICNIC AREAS

## SEASONAL AMENITIES

● HIGH USE ● LIMITED ● LOW USE

● SPRING ● FALL

● SUMMER ● WINTER

# COUNTRY CLUB PARK



**LOCATION :** 1725 17th Street NW



**SIZE :** 1.60 acres

**CLASSIFICATION :** Neighborhood Park/Playground

**REC CENTER :** No

**SCHOOL CONNECTIONS :** None

**CURRENT PROJECTS:** None

## CONTEXT

Country Club Park is located south of the Faribault Golf and Country Club. It is on the north side of Faribault and is in close proximity to Lyndale Ave. The open space primarily functions as a storm water retention area.

## CURRENT CONDITIONS AND CONCERNS

There are currently no amenities in this park.

## PARK FACILITY CONDITIONS (SITE VERIFIED)

● GOOD ● FAIR ● POOR

## SEASONAL AMENITIES

● HIGH USE ● LIMITED ● LOW USE

● SPRING ● FALL

● SUMMER ● WINTER

# FOREST PARK



**LOCATION :** 1516 Greenleaf Road



**SIZE :** 1.20 acres

**CLASSIFICATION :** Neighborhood Park/Playground

**REC CENTER :** No

**SCHOOL CONNECTIONS :** None

**CURRENT PROJECTS:** None

## CONTEXT

This neighborhood park is located on the north side of Faribault. It has a connection to a city trail but no other pedestrian or vehicular access. This park is also located in a single family residential neighborhood. An industrial park is north of the site but well buffered by vegetation.

## CURRENT CONDITIONS AND CONCERNS

Forest Park is well maintained but has aging equipment and facilities. No amenities in the park meet ADA accessibility requirements. Large mature trees create a nice buffer to the industrial site to the north and shade within the park.

## PARK FACILITY CONDITIONS (SITE VERIFIED)

● GOOD ● FAIR ● POOR

● PLAYGROUND

● BASKETBALL COURT

● PICNIC AREAS

● SAND VOLLEYBALL

● TRAILS

## SEASONAL AMENITIES

● HIGH USE ● LIMITED ● LOW USE

● SPRING

● FALL

● SUMMER

● WINTER



# GARFIELD PARK



**LOCATION :** 421 3rd Avenue SW

**SIZE :** 3.0 acres

**CLASSIFICATION :** Neighborhood Park/Playground

**REC CENTER :** No

**SCHOOL CONNECTIONS :** None

**CURRENT PROJECTS:** None



## CONTEXT

Garfield Park is located directly adjacent to Wapacuta Park in the southeast area of Faribault. Single and multi family homes surround the park. It is less than half a mile from the Downtown.

## CURRENT CONDITIONS AND CONCERNS

This park is well maintained but has aging facilities. It does not meet ADA guidelines. Pedestrian access within the site is limited.

## PARK FACILITY CONDITIONS (SITE VERIFIED)

● GOOD ● FAIR ● POOR

● PLAYGROUND

● GARDEN

● BASEBALL FIELD

● BENCHES

## SEASONAL AMENITIES

● HIGH USE ● LIMITED ● LOW USE

● SPRING

● FALL

● SUMMER

● WINTER

# JEFFERSON PARK



**LOCATION :** 910 9th Avenue SW

**SIZE :** 5.50 acres

**CLASSIFICATION :** Neighborhood Park/Playground

**REC CENTER :** No

**SCHOOL CONNECTIONS :** Yes

**CURRENT PROJECTS:** None



## CONTEXT

This park is located east of Jefferson School in south central Faribault. Church of Christ borders the east side of the park. It is situated in a single family residential neighborhood. Jefferson Park also hosts Park and Recreation, and community programming during the summer.

## CURRENT CONDITIONS AND CONCERNS

The fields are in good condition and well maintained. The north hockey rink boards appear to be aging and are in need of some repairs. Current plans call for the north hockey rink to be replaced in fall 2018. The community building appears to be well maintained and in good condition. It may be small for the size OF groups that use it.

## PARK FACILITY CONDITIONS (SITE VERIFIED)

● GOOD ● FAIR ● POOR

● PLAYGROUND

● SOCCER/RUGBY FIELD

● SOFTBALL FIELD

● HOCKEY RINK

● SKATING RINK

● WARMING HOUSE

● INDOOR BATHROOMS

## SEASONAL AMENITIES

● HIGH USE ● LIMITED ● LOW USE

● SPRING

● SUMMER

● FALL

● WINTER

# KINDER PARK



**LOCATION :** 1615 24th Avenue NW



**SIZE :** 0.7 acres

**CLASSIFICATION :** Neighborhood Park/Playground

**REC CENTER :** No

**SCHOOL CONNECTIONS :** None

**CURRENT PROJECTS:** None

## CONTEXT

This neighborhood park is located in the northwest side of Faribault, just east of Interstate 35. Undeveloped, agricultural land is north of the park. It serves single family and multi family residential homes.

## CURRENT CONDITIONS AND CONCERNS

While Kinder Park is well maintained, the facilities are aging and are in need of upgrades. There is no vehicular or pedestrian circulation within the park. It does not meet ADA guidelines either.

## PARK FACILITY CONDITIONS (SITE VERIFIED)

● GOOD ● FAIR ● POOR

● PLAYGROUND

● PICNIC AREAS

● BASKETBALL COURTS

● MONUMENT

## SEASONAL AMENITIES

● HIGH USE ● LIMITED ● LOW USE

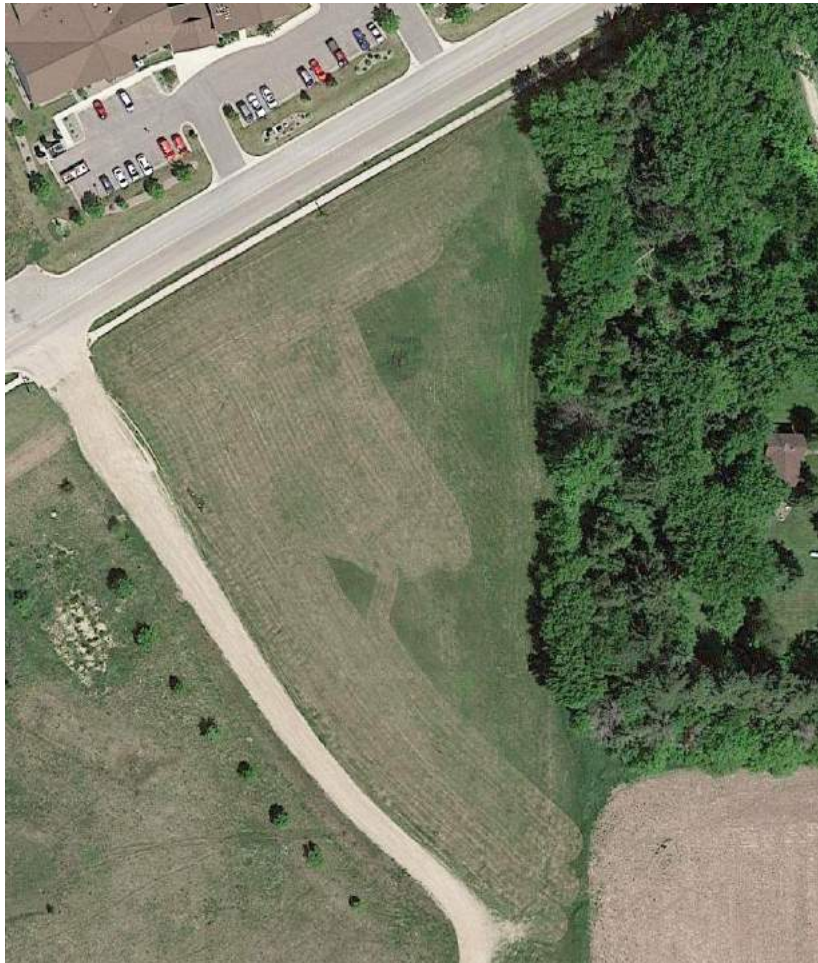
● SPRING

● FALL

● SUMMER

● WINTER

# MEADOWS PARK



**LOCATION :** 2505 14th Street NE

**SIZE :** 2.90 acres

**CLASSIFICATION :** Neighborhood Park/Playground

**REC CENTER :** No

**SCHOOL CONNECTIONS :** None

**CURRENT PROJECTS:** None



## CONTEXT

Meadows Park is located directly adjacent to Milestone Senior Living - Faribault. It is on the very north east edge of town and surrounded by undeveloped open space.

## CURRENT CONDITIONS AND CONCERNS

There are currently no amenities in this park as it is undeveloped at this time.

## PARK FACILITY CONDITIONS (SITE VERIFIED)

● GOOD ● FAIR ● POOR

## SEASONAL AMENITIES

● HIGH USE ● LIMITED ● LOW USE

● SPRING ● FALL

● SUMMER ● WINTER

# MEDER PARK



**LOCATION :** 400 Division Street E



**SIZE :** 2.50 acres

**CLASSIFICATION :** Neighborhood Park/Playground

**REC CENTER :** No

**SCHOOL CONNECTIONS :** None

**CURRENT PROJECTS:** None

## CONTEXT

Meder Park is located on the southeast side of the viaduct. It has significant grade change through the site. It currently serves as a pedestrian connection from 1st St NE to Teepee Tonka Park.

## CURRENT CONDITIONS AND CONCERNS

There are currently no amenities in this park.

## PARK FACILITY CONDITIONS (SITE VERIFIED)

● GOOD ● FAIR ● POOR

## SEASONAL AMENITIES

● HIGH USE ● LIMITED ● LOW USE

● SPRING ● FALL

● SUMMER ● WINTER

# RIVER TRAILS PARK



**LOCATION :** 917 Rice Street



**SIZE :** 0.90 acres

**CLASSIFICATION :** Neighborhood Park/Playground

**REC CENTER :** No

**SCHOOL CONNECTIONS :** None

**CURRENT PROJECTS:** None

## CONTEXT

This neighborhood park is located just north of Straight River Park. It has a trail connection to the Straight River Trail and provides access to the surrounding neighborhood.

## CURRENT CONDITIONS AND CONCERNS

Overall this park is in good condition and is well maintained. The playground equipment is aging and does not meeting ADA guidelines. Mature trees are a great amenity for River Trails Park and provide habitat and shade.

## PARK FACILITY CONDITIONS (SITE VERIFIED)

● GOOD ● FAIR ● POOR

● PLAYGROUND

● TRAILS

● NATURE AREAS

## SEASONAL AMENITIES

● HIGH USE ● LIMITED ● LOW USE

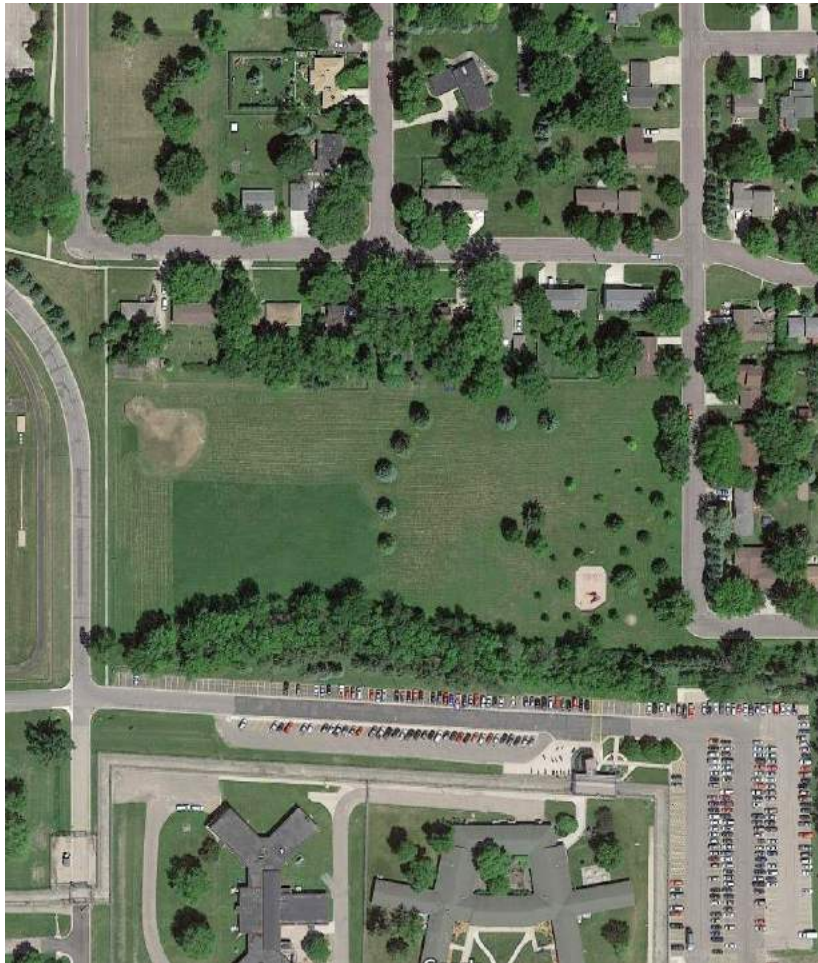
● SPRING

● FALL

● SUMMER

● WINTER

# SEABURY PARK



**LOCATION :** 430 10th Avenue SE

**SIZE :** 6.90 acres

**CLASSIFICATION :** Neighborhood Park/Playground

**REC CENTER :** No

**SCHOOL CONNECTIONS :** None

**CURRENT PROJECTS:** None



## CONTEXT

Seabury Park is located north of the Minnesota Correctional Facility - Faribault and east of Minnesota State Academy for the Blind. It has no vehicular access into the park and has limited pedestrian circulation. It is in close proximity to River Bend Nature Center but does not have a connection.

## CURRENT CONDITIONS AND CONCERNS

This park is in fair condition. It has limited facilities and no pedestrian circulation. The softball field appears to have some drainage concerns as well.

## PARK FACILITY CONDITIONS (SITE VERIFIED)

● GOOD ● FAIR ● POOR

● PLAYGROUND

● PICNIC AREAS

● SOFTBALL FIELD

● BENCHES

## SEASONAL AMENITIES

● HIGH USE ● LIMITED ● LOW USE

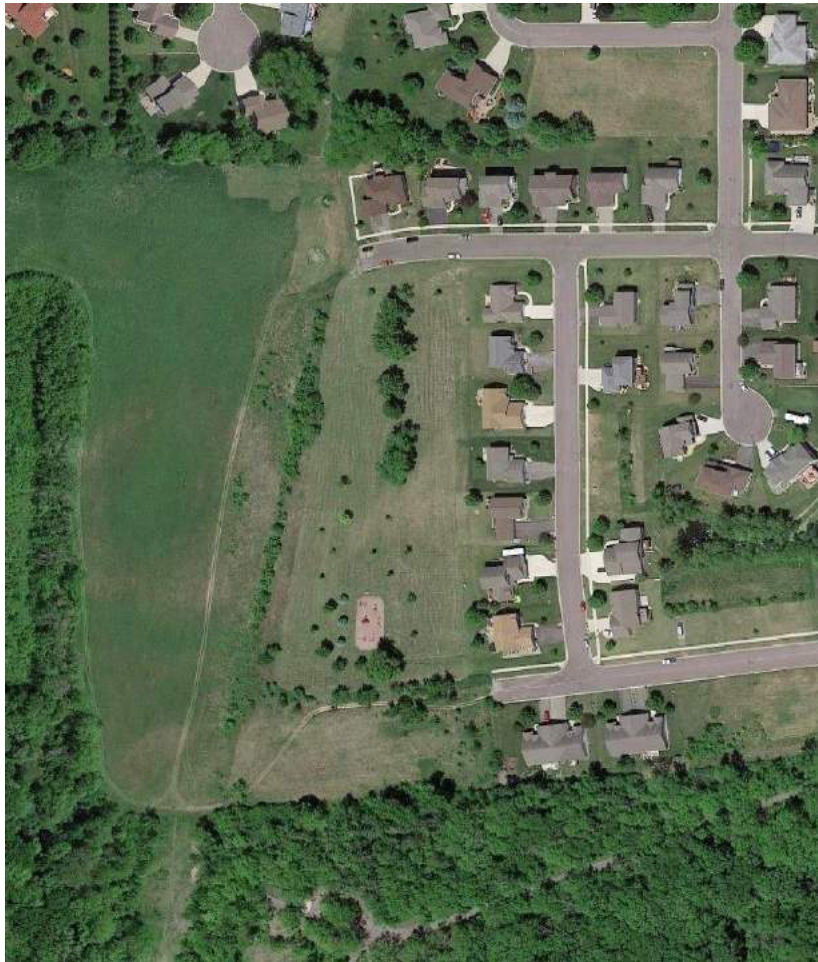
● SPRING

● FALL

● SUMMER

● WINTER

# STONERIDGE PARK



**LOCATION :** 1915 13th Street NW



**SIZE :** 5.10 acres

**CLASSIFICATION :** Neighborhood Park/Playground

**REC CENTER :** No

**SCHOOL CONNECTIONS :** None

**CURRENT PROJECTS:** None

## CONTEXT

Stoneridge Park is just north of the Cannon River. It is largely surrounded by naturalized areas with mature trees.

## CURRENT CONDITIONS AND CONCERNS

The playground equipment is aging and does not meeting ADA guidelines.

## PARK FACILITY CONDITIONS (SITE VERIFIED)

● GOOD ● FAIR ● POOR

● PLAYGROUND

## SEASONAL AMENITIES

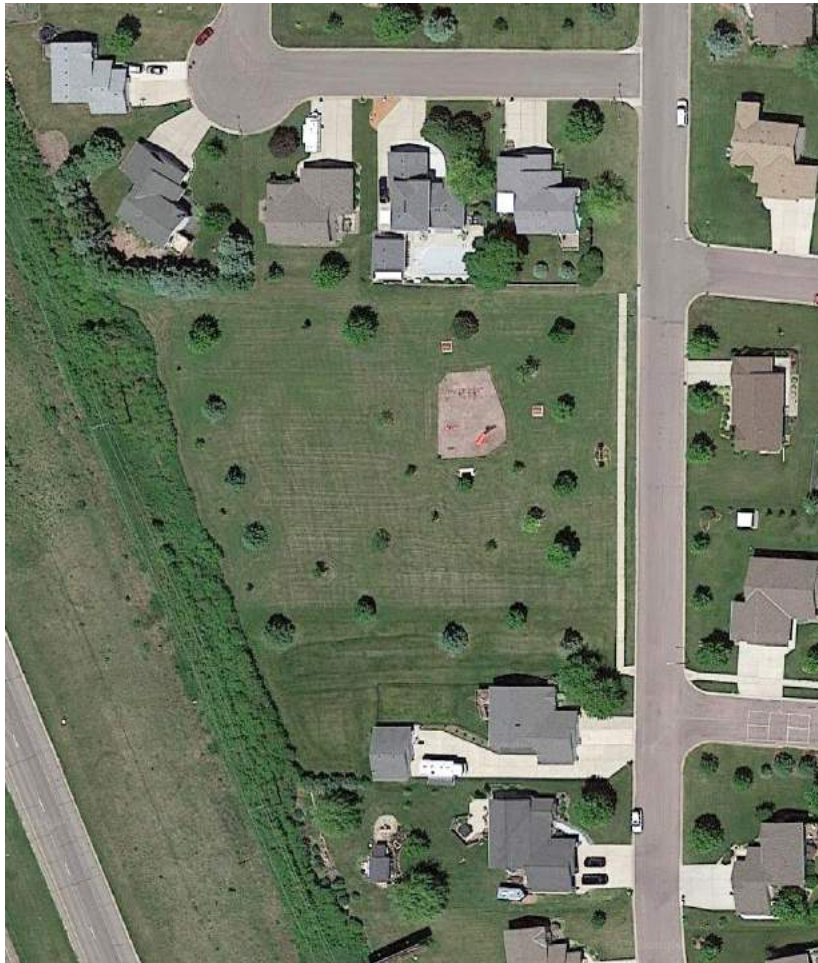
● HIGH USE ● LIMITED ● LOW USE

● SPRING ● FALL

● SUMMER ● WINTER



# WESTWOOD PARK



**LOCATION :** 1900 Westwood Drive

**SIZE :** 2.10 acres

**CLASSIFICATION :** Neighborhood Park/Playground

**REC CENTER :** No

**SCHOOL CONNECTIONS :** None

**CURRENT PROJECTS:** None



## CONTEXT

Westwood Park is a neighborhood park located on the south side of Faribault in a single family residential neighborhood. It is directly adjacent to Interstate 35 on the west.

## CURRENT CONDITIONS AND CONCERNS

The playground and picnic facilities are in fair condition but do not meet ADA guidelines. The sidewalk connection does not continue into the neighborhood. The park does not accommodate vehicular traffic either.

## PARK FACILITY CONDITIONS (SITE VERIFIED)

● GOOD ● FAIR ● POOR

● PLAYGROUND

● PICNIC AREAS

● LITTLE LIBRARY

## SEASONAL AMENITIES

● HIGH USE ● LIMITED ● LOW USE

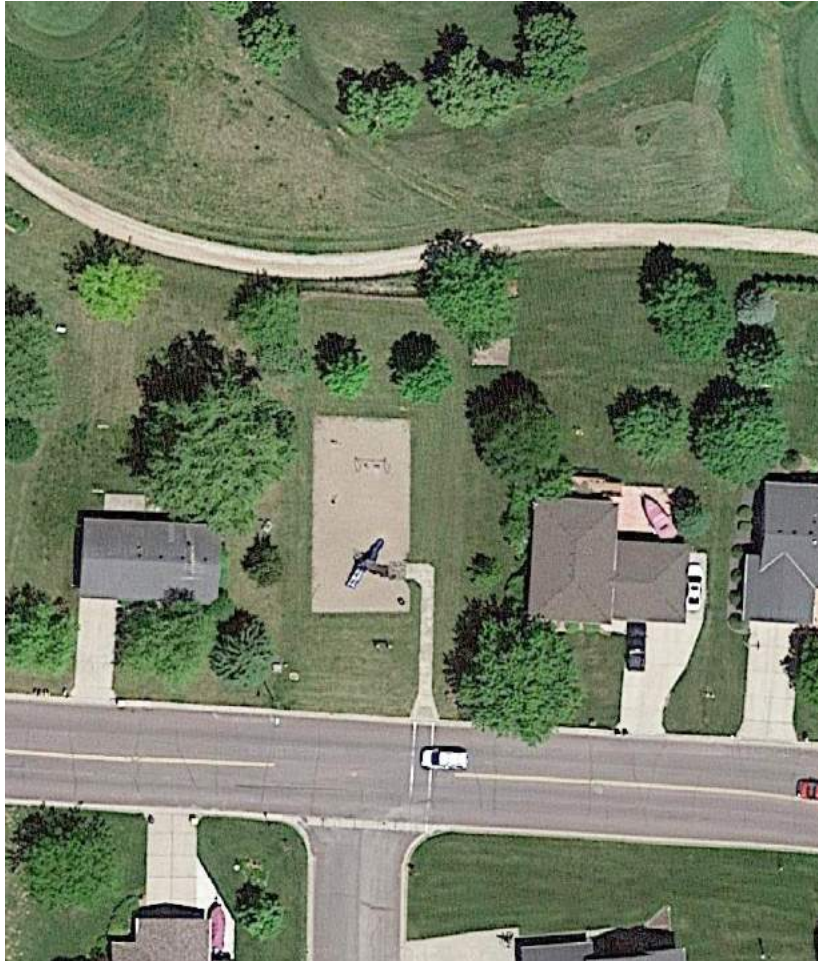
● SPRING

● FALL

● SUMMER

● WINTER

# WHIPPLE HEIGHTS PARK



**LOCATION :** 1700 Shumway Avenue

**SIZE :** 0.20 acres

**CLASSIFICATION :** Neighborhood Park/Playground

**REC CENTER :** No

**SCHOOL CONNECTIONS :** None

**CURRENT PROJECTS:** None



## CONTEXT

This small, neighborhood park is directly adjacent to Legacy Golf Course. A fence separates the park from the golf course's pedestrian path.

## CURRENT CONDITIONS AND CONCERNS

Whipple Heights Park is well maintained but could use upgrades to increase its longevity. It has limited pedestrian circulation as well.

## PARK FACILITY CONDITIONS (SITE VERIFIED)

● GOOD ● FAIR ● POOR

● PLAYGROUND

● PICNIC AREAS

## SEASONAL AMENITIES

● HIGH USE ● LIMITED ● LOW USE

● SPRING ● FALL

● SUMMER ● WINTER

# WINDSOR PARK



**LOCATION :** 1600 Greenwood Place

**SIZE :** 2.90 acres

**CLASSIFICATION :** Neighborhood Park/Playground

**REC CENTER :** No

**SCHOOL CONNECTIONS :** None

**CURRENT PROJECTS:** None



## CONTEXT

Windsor Park is a highly used neighborhood park on the south side of Faribault. It is accessed by single family and multi family homes in the surrounding area. This park has a few different amenities and offers a range of activities.

## CURRENT CONDITIONS AND CONCERNS

Much of park facilities are degraded and need improvements. The basketball hoops have been removed. The play area is aging. Large mature trees are an asset to the park and provide a nice amount of shade.

## PARK FACILITY CONDITIONS (SITE VERIFIED)

● GOOD ● FAIR ● POOR

- PLAYGROUND
- PICNIC AREAS
- SAND VOLLEYBALL
- BASKETBALL COURTS

## SEASONAL AMENITIES

● HIGH USE ● LIMITED ● LOW USE

- SPRING ● FALL
- SUMMER ● WINTER

# FARIBAULT SOCCER COMPLEX



**LOCATION :** 705 17th Street SW

**SIZE :** 21.50 acres

**CLASSIFICATION :** Special Features

**REC CENTER :** No

**SCHOOL CONNECTIONS :** Yes

**CURRENT PROJECTS:** None



## CONTEXT

This large sports complex is a highly used amenity for the community. It is located on the very southern edge of Faribault, directly south of Faribault Middle School.

## CURRENT CONDITIONS AND CONCERNS

This park is well maintained and in very good condition. The premier fields are well intact and used by a large group of people. The concession and restroom building appears to be in good working order and a valuable asset. The picnic shelter is also in good shape. There is limited pedestrian circulation through park and could use improvements. A vehicular drop off is missing as well and one bay of parking creates a dead end.

## PARK FACILITY CONDITIONS (SITE VERIFIED)

● GOOD ● FAIR ● POOR

● RESTROOM

● SOCCER/RUGBY FIELD

## SEASONAL AMENITIES

● HIGH USE ● LIMITED ● LOW USE

● SPRING ● FALL

● SUMMER ● WINTER

# HERITAGE PARK



**LOCATION :** 401 Heritage Place



**SIZE :** 0.30 acres

**CLASSIFICATION :** Special Features

**REC CENTER :** No

**SCHOOL CONNECTIONS :** None

**CURRENT PROJECTS:** None

## CONTEXT

Heritage Park is the terminus of 4th St NE and is located Downtown. At the end of a turnaround, this park has a close connection the Straight River. Many complimentary businesses/organizations such as The Depot Bar & Grill and Lutheran Social Services are within close proximity. An active railroad is on the east side of the park

## CURRENT CONDITIONS AND CONCERNS

The park's statue and gardens are in good shape and well maintained.

## PARK FACILITY CONDITIONS (SITE VERIFIED)

● GOOD ● FAIR ● POOR

● RIVER/PONDS

● MONUMENT

● BENCHES

● GARDEN

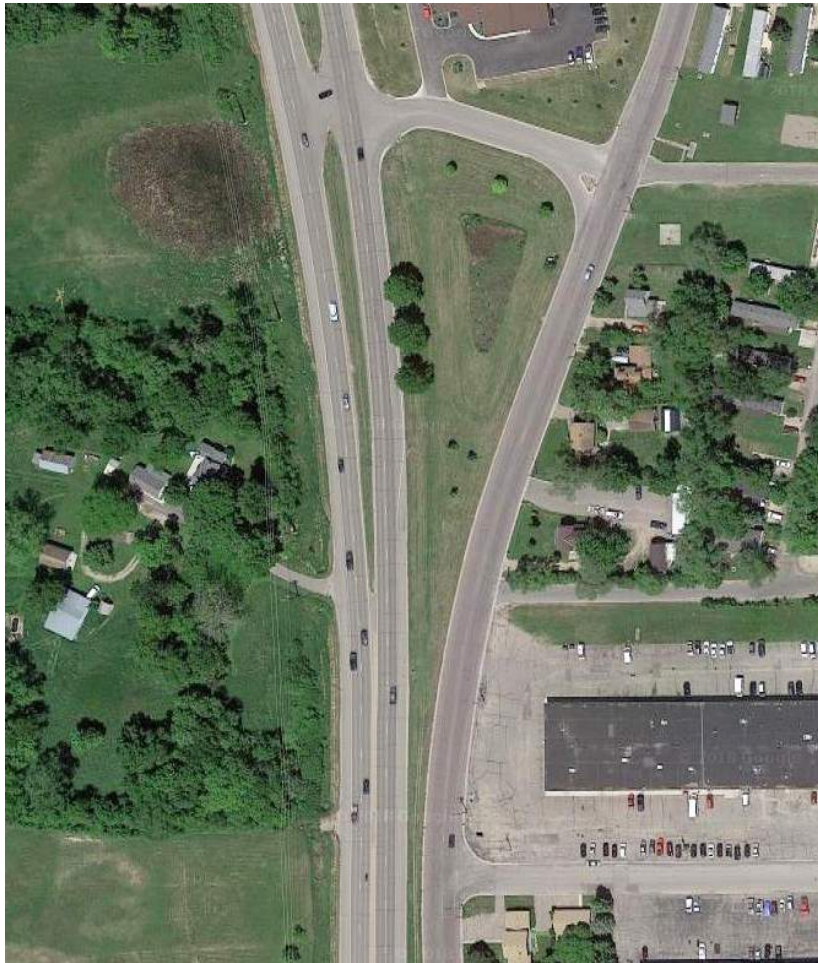
## SEASONAL AMENITIES

● HIGH USE ● LIMITED ● LOW USE

● SPRING ● FALL

● SUMMER ● WINTER

# HULETT TRIANGLE



**LOCATION :** 1400 Hullet Avenue

**SIZE :** 1.6 acres

**CLASSIFICATION :** Special Features

**REC CENTER :** No

**SCHOOL CONNECTIONS :** None

**CURRENT PROJECTS:** None



## CONTEXT

This triangle property is centrally located within the community. It has no pedestrian or vehicular access within the site.

## CURRENT CONDITIONS AND CONCERNS

There are currently no amenities in this park, and it functions primarily as a storm water retention area.

## PARK FACILITY CONDITIONS (SITE VERIFIED)

● GOOD ● FAIR ● POOR

## SEASONAL AMENITIES

● HIGH USE ● LIMITED ● LOW USE

● SPRING ● FALL

● SUMMER ● WINTER

# PYE PARK



**LOCATION :** 6 Mott Avenue SE

**SIZE :** 0.50 acres

**CLASSIFICATION :** Special Features

**REC CENTER :** No

**SCHOOL CONNECTIONS :** None

**CURRENT PROJECTS:** None



## CONTEXT

Pye Park is located on the southeast side of the viaduct. It has significant grade change through the site. It currently serves as a pedestrian connection from 1st St NE to Teepee Tonka Park.

## CURRENT CONDITIONS AND CONCERNS

There are currently no amenities in this park.

## PARK FACILITY CONDITIONS (SITE VERIFIED)

● GOOD ● FAIR ● POOR

● PICNIC TABLES

● BENCHES

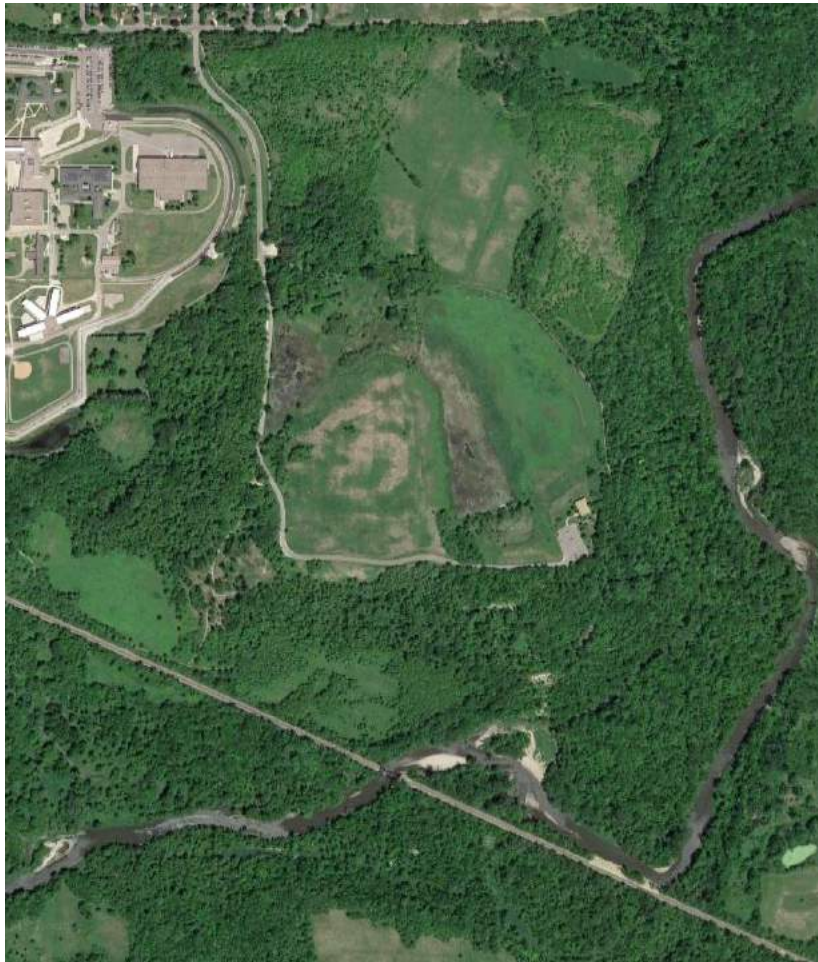
## SEASONAL AMENITIES

● HIGH USE ● LIMITED ● LOW USE

● SPRING ● FALL

● SUMMER ● WINTER

# RIVER BEND NATURE CENTER



**LOCATION :** 1000 Rustad Road

**SIZE :** 778.20 acres

**CLASSIFICATION :** Special Features

**REC CENTER :** No

**SCHOOL CONNECTIONS :** None

**CURRENT PROJECTS:** None



## CONTEXT

This large, nature-based park has multiple ecosystems and environments to discover. The Straight River meanders through the park. Many different nature trails connect to the various areas and offer interpretation opportunities. There are two parking areas as well. This park is managed by a separate entity from the city.

## CURRENT CONDITIONS AND CONCERNS

The nature areas and trails are in good condition. The interpretive center is in good condition as well. There may be opportunities to expand the classroom space.

## PARK FACILITY CONDITIONS (SITE VERIFIED)

● GOOD ● FAIR ● POOR

● PICNIC AREAS

● RESTROOM

● TRAILS

● NATURE AREAS

● INTERPRETIVE CENTER

## SEASONAL AMENITIES

● HIGH USE ● LIMITED ● LOW USE

● SPRING

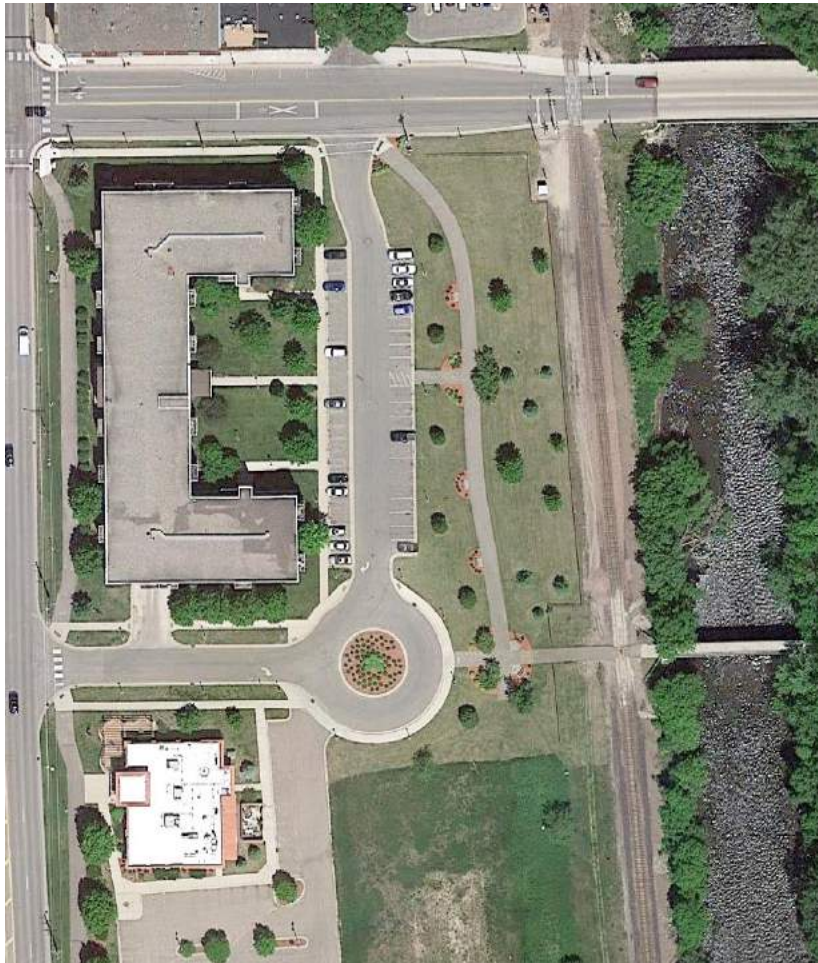
● FALL

● SUMMER

● WINTER



# RIVER RIDGE PARK



**LOCATION :** 200 2nd Street NE

**SIZE :** 0.90 acres

**CLASSIFICATION :** Special Features

**REC CENTER :** No

**SCHOOL CONNECTIONS :** None

**CURRENT PROJECTS:** None



## CONTEXT

River Ridge Park is the terminus of 2nd St NE and Heritage Pl. It has the only pedestrian crossing for the railroad direct access to the Straight River. It is in close proximity to Heritage Park as well. The Straight River Trail runs along the west side of the park.

## CURRENT CONDITIONS AND CONCERNS

The gardens and trail are in good condition. Access to the river is limited and could be improved.

## PARK FACILITY CONDITIONS (SITE VERIFIED)

● GOOD ● FAIR ● POOR

● RIVER/PONDS

● VIRTUES WALK

## SEASONAL AMENITIES

● HIGH USE ● LIMITED ● LOW USE

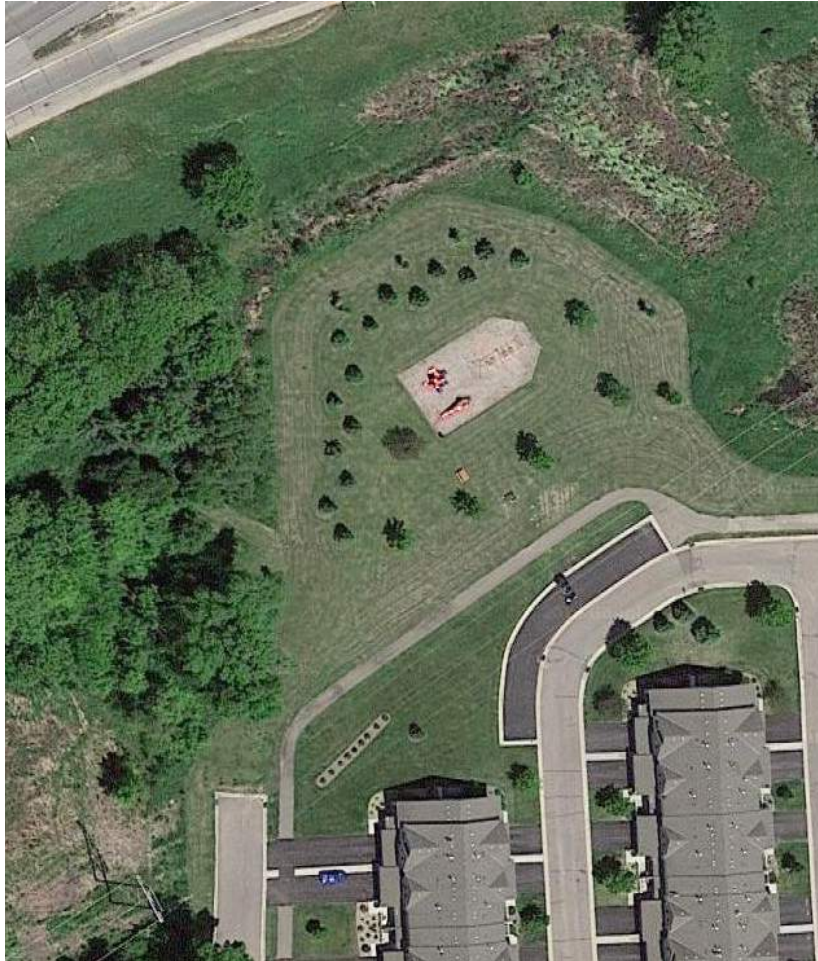
● SPRING

● FALL

● SUMMER

● WINTER

# THE VILLAGE PARK



**LOCATION :** 3100 Western Avenue N

**SIZE :** 1.40 acres

**CLASSIFICATION :** Special Features

**REC CENTER :** No

**SCHOOL CONNECTIONS :** None

**CURRENT PROJECTS:** None



## CONTEXT

The Village Park is located north of Faribault Golf & Country Club. It is also directly south of Interstate 35 and west of Lyndale Ave. Multi family homes are also adjacent.

## CURRENT CONDITIONS AND CONCERNS

The playground equipment is in good shape but does not have adequate pedestrian access or meet ADA guidelines. An enhanced noise buffer to the highway may make the site more comfortable.

## PARK FACILITY CONDITIONS (SITE VERIFIED)

● GOOD ● FAIR ● POOR

● PLAYGROUND

## SEASONAL AMENITIES

● HIGH USE ● LIMITED ● LOW USE

● SPRING ● FALL

● SUMMER ● WINTER

# WASHINGTON RECREATION CENTER



**LOCATION :** 117 Shumway Avenue

**SIZE :** 2.20 acres

**CLASSIFICATION :** Special Features

**REC CENTER :** Yes

**SCHOOL CONNECTIONS :** None

**CURRENT PROJECTS:** None



## CONTEXT

Washington Recreation Center is adjacent to the New Perspectives Senior Living community on the east side of the Straight River. It has an outside park that serves as a neighborhood playground for the surrounding homes.

## CURRENT CONDITIONS AND CONCERNS

The park is in fair condition. It is well maintained but does not meet ADA guidelines. The vehicular traffic is one-way and can cause confusion when accessing the park.

## PARK FACILITY CONDITIONS (SITE VERIFIED)

● GOOD ● FAIR ● POOR

● PICNIC AREAS

● PLAYGROUND

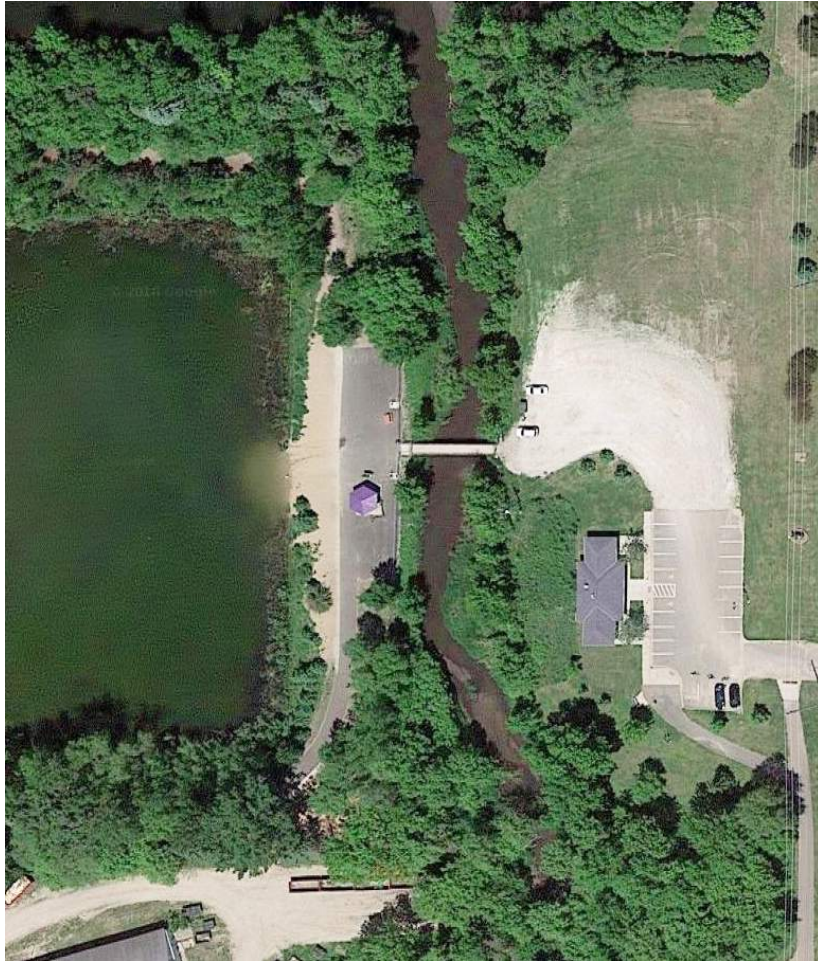
## SEASONAL AMENITIES

● HIGH USE ● LIMITED ● LOW USE

● SPRING ● FALL

● SUMMER ● WINTER

# WHITE SANDS DOG PARK



**LOCATION :** 900 Lyndale Avenue N

**SIZE :** 8.30 acres

**CLASSIFICATION :** Special Features

**REC CENTER :** Yes

**SCHOOL CONNECTIONS :** None

**CURRENT PROJECTS:** None



## CONTEXT

White Sands Dog Park is a dual use park that has been converted from an old swimming hole. The parking area serves as a park and ride. A swimming pond and nature trails make for a fun and unique experience for dog owners. You enter the park by crossing over a creek that flows into the Cannon River. The park is well buffered from surrounding uses as well. It has access to the Sakatah Singing Hills State Trail and contains a trail head.

## CURRENT CONDITIONS AND CONCERNS

Overall, this park is well maintained and cared for. It is in good condition and meets many needs for the users. The picnic areas could use some improvements. A right in, right out entrance makes vehicular access challenging.

## PARK FACILITY CONDITIONS (SITE VERIFIED)

● GOOD ● FAIR ● POOR

● PICNIC AREAS

● RESTROOM

● TRAILS

● RIVER/PONDS

● PARK AND RIDE

● LEASH FREE DOG PARK

## SEASONAL AMENITIES

● HIGH USE ● LIMITED ● LOW USE

● SPRING

● SUMMER

● FALL

● WINTER