

FARIBAULT SOCCER COMPLEX



LOCATION : 705 17th Street SW

SIZE : 21.50 acres

CLASSIFICATION : Special Features

REC CENTER : No

SCHOOL CONNECTIONS : Yes

CURRENT PROJECTS: None



CONTEXT

This large sports complex is a highly used amenity for the community. It is located on the very southern edge of Faribault, directly south of Faribault Middle School.

CURRENT CONDITIONS AND CONCERNS

This park is well maintained and in very good condition. The premier fields are well intact and used by a large group of people. The concession and restroom building appears to be in good working order and a valuable asset. The picnic shelter is also in good shape. There is limited pedestrian circulation through park and could use improvements. A vehicular drop off is missing as well and one bay of parking creates a dead end.

PARK FACILITY CONDITIONS (SITE VERIFIED)

● GOOD ● FAIR ● POOR

● RESTROOM

● SOCCER/RUGBY FIELD

SEASONAL AMENITIES

● HIGH USE ● LIMITED ● LOW USE

● SPRING

● FALL

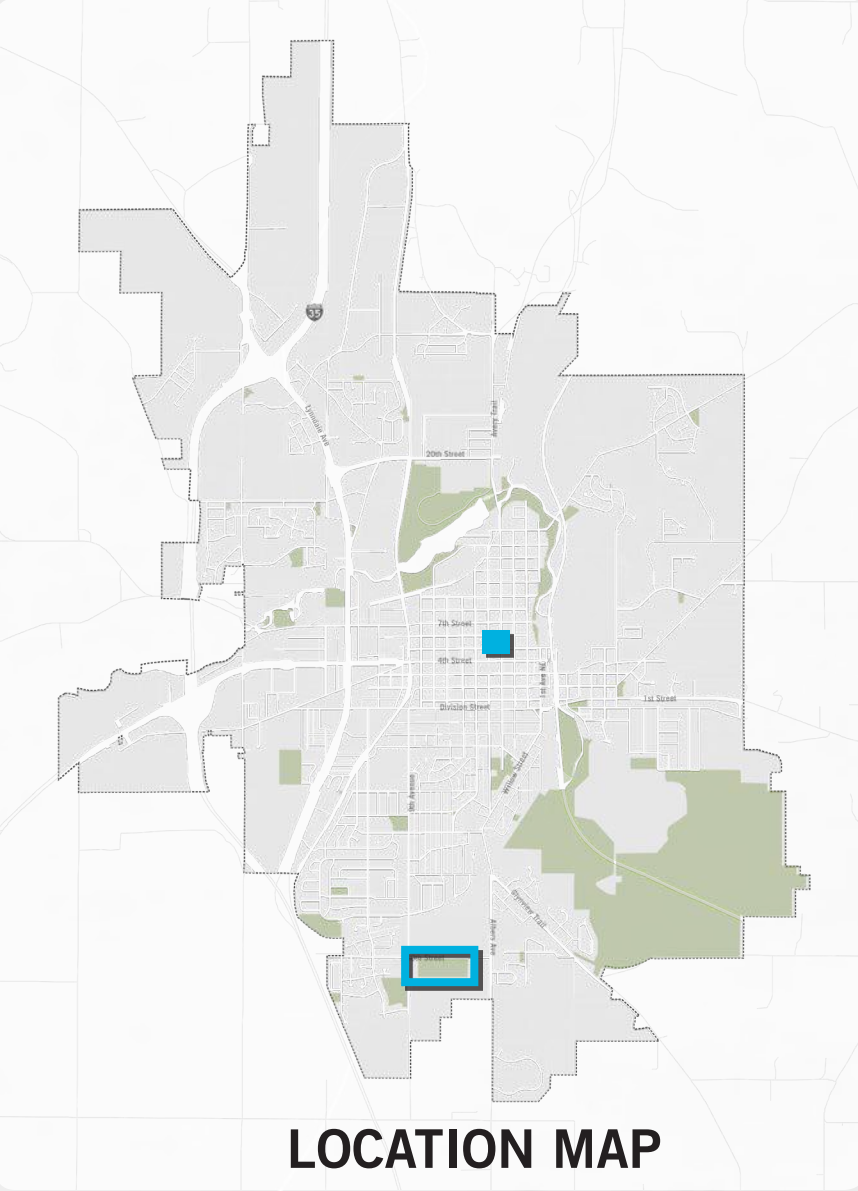
● SUMMER

● WINTER

LEGEND

- 1 EXISTING SOCCER
- 2 PROPOSED SOCCER
- 3 PARKING
- 4 CONCESSIONS BUILDING
- 5 EXISTING SHELTER
- 6 PLAZA AREAS WITH SHADE SAILS & SEATING
- 7 PICNIC AREA
- 8 WALKWAY
- 9 EXISTING STORMWATER POND
- 10 PRAIRIE
- 11 PICNIC PAVILION
- 12 PLAYGROUND

1 7 T H S T S W



HERITAGE PARK



LOCATION : 401 Heritage Place

SIZE : 0.30 acres

CLASSIFICATION : Special Features

REC CENTER : No

SCHOOL CONNECTIONS : None

CURRENT PROJECTS: None



CONTEXT

Heritage Park is the terminus of 4th St NE and is located Downtown. At the end of a turnaround, this park has a close connection the Straight River. Many complimentary businesses/organizations such as The Depot Bar & Grill and Lutheran Social Services are within close proximity. An active railroad is on the east side of the park

CURRENT CONDITIONS AND CONCERNS

The park's statue and gardens are in good shape and well maintained.

PARK FACILITY CONDITIONS (SITE VERIFIED)

● GOOD ● FAIR ● POOR

● RIVER/PONDS

● MONUMENT

● BENCHES

● GARDEN

SEASONAL AMENITIES

● HIGH USE ● LIMITED ● LOW USE

● SPRING

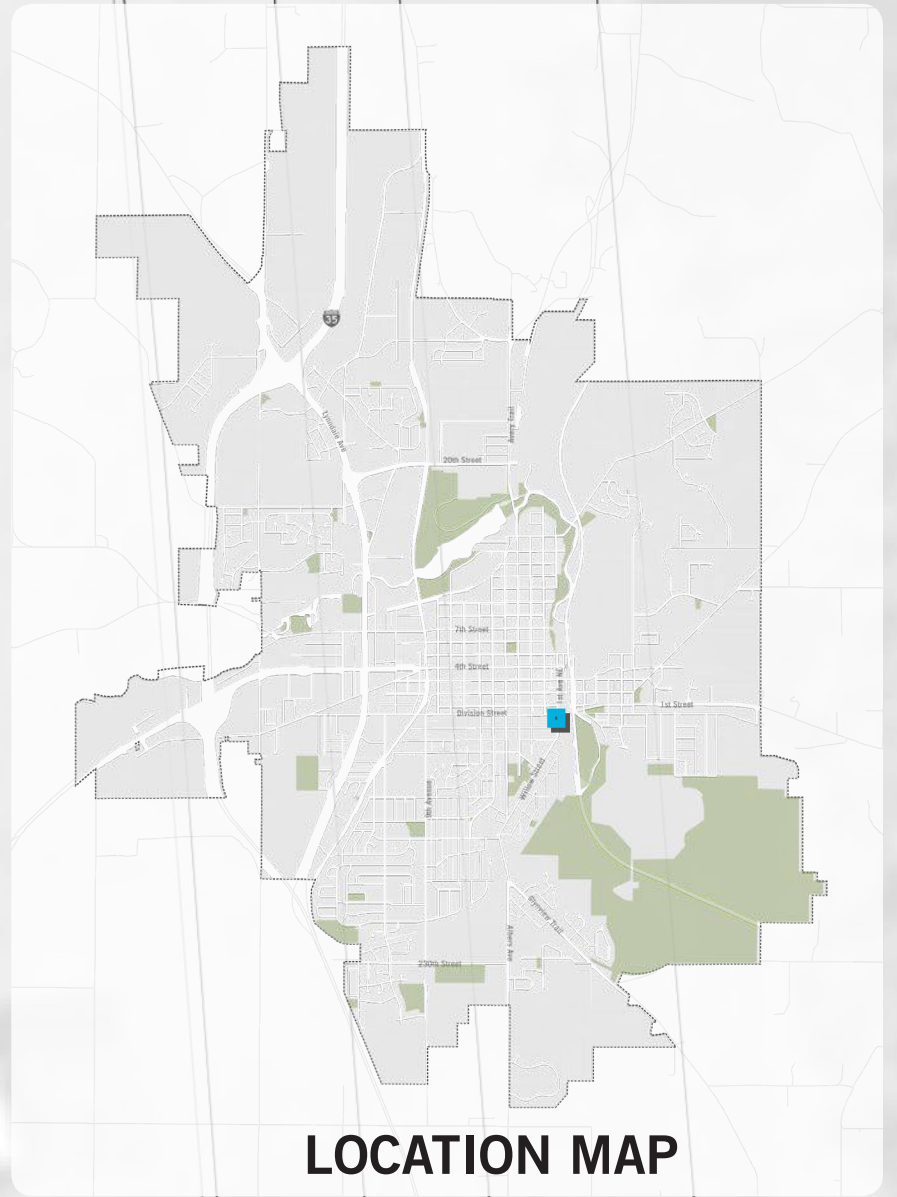
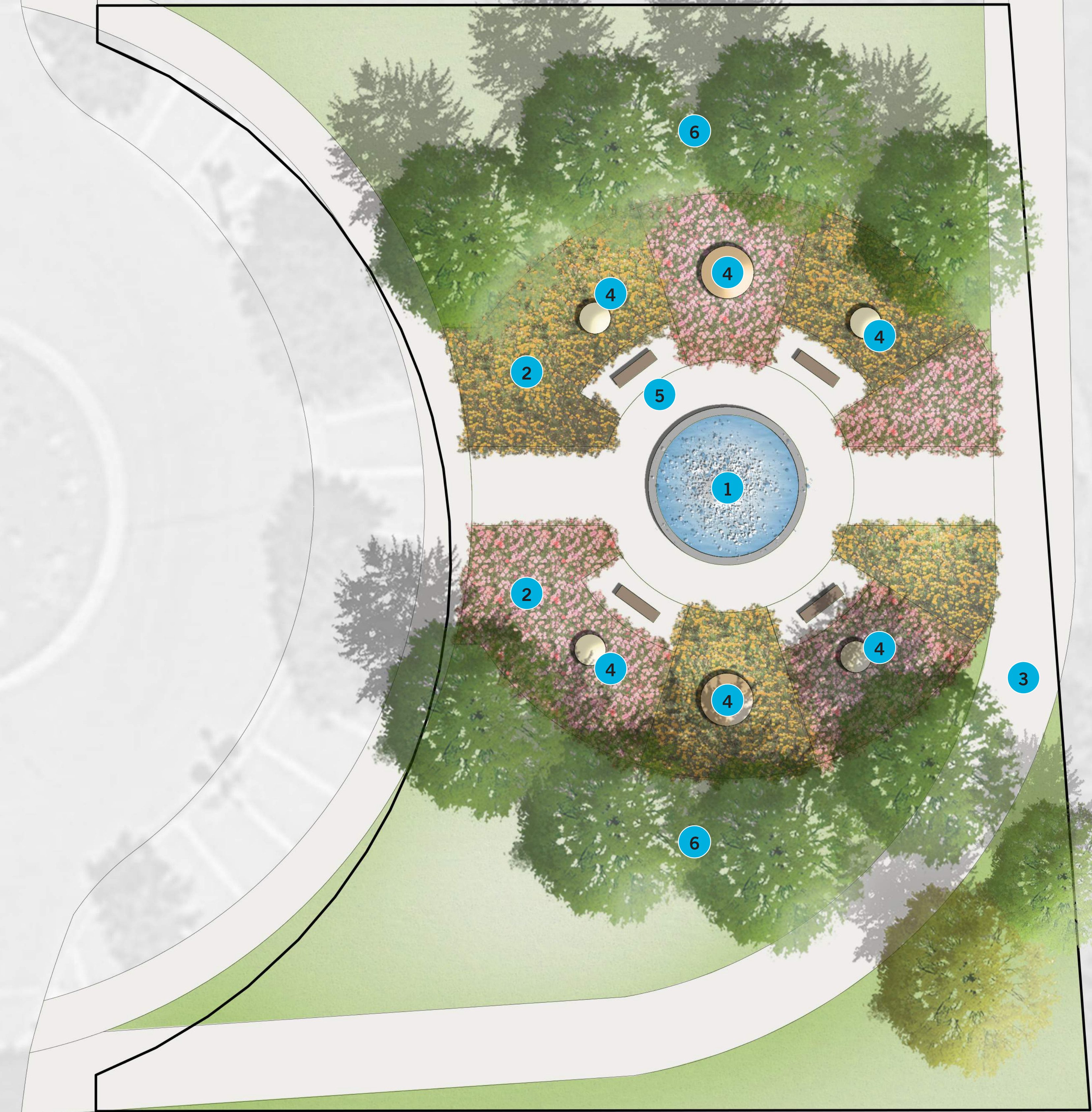
● FALL

● SUMMER

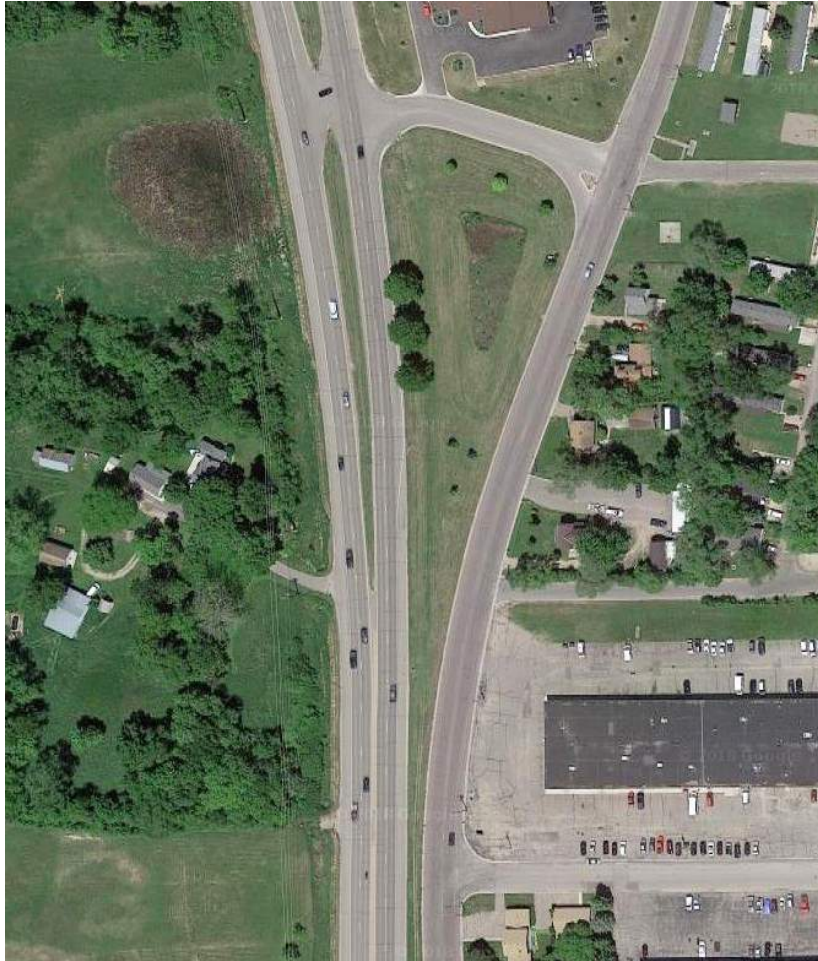
● WINTER

LEGEND

- 1 EXISTING FOUNTAIN
- 2 FORMAL GARDENS
- 3 BICYCLE PATH
- 4 PUBLIC ART
- 5 SEATING
- 6 NEW TREE PLANTING



HULETT TRIANGLE



LOCATION : 1400 Hullet Avenue

SIZE : 1.6 acres

CLASSIFICATION : Special Features

REC CENTER : No

SCHOOL CONNECTIONS : None

CURRENT PROJECTS: None



CONTEXT

This triangle property is centrally located within the community. It has no pedestrian or vehicular access within the site.

CURRENT CONDITIONS AND CONCERNS

There are currently no amenities in this park, and it functions primarily as a storm water retention area.

PARK FACILITY CONDITIONS (SITE VERIFIED)

● GOOD ● FAIR ● POOR

SEASONAL AMENITIES

● HIGH USE ● LIMITED ● LOW USE

● SPRING ● FALL
● SUMMER ● WINTER

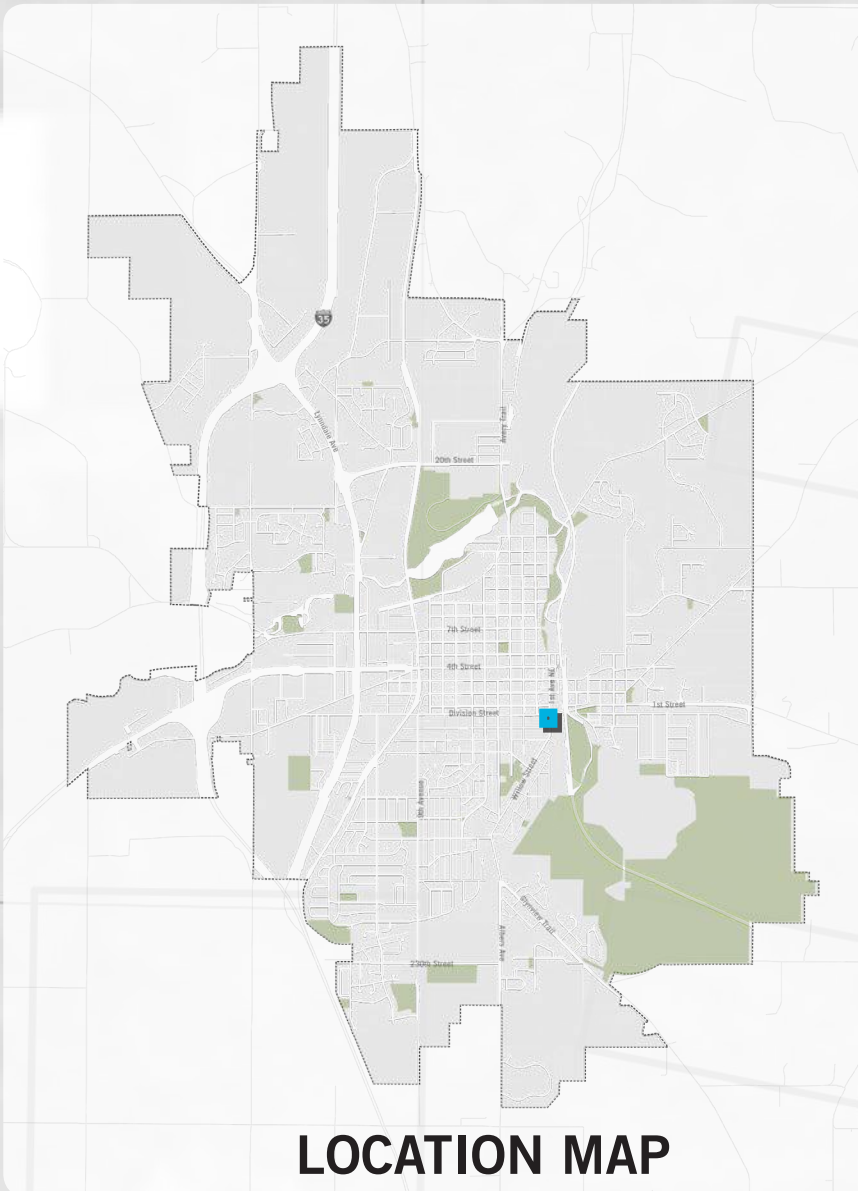
LEGEND

- 1 STORMWATER
- 2 PRAIRIE

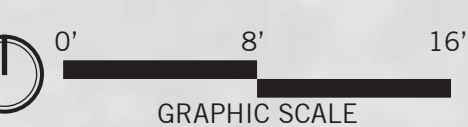
LYNDAL AVE N

BRADLEY RD

HULETT AVE



LOCATION MAP



HULETT TRIANGLE MASTER PLAN

RIVER RIDGE PARK



LOCATION : 200 2nd Street NE

SIZE : 0.90 acres

CLASSIFICATION : Special Features

REC CENTER : No

SCHOOL CONNECTIONS : None

CURRENT PROJECTS: None



CONTEXT

River Ridge Park is the terminus of 2nd St NE and Heritage Pl. It has the only pedestrian crossing for the railroad direct access to the Straight River. It is in close proximity to Heritage Park as well. The Straight River Trail runs along the west side of the park.

CURRENT CONDITIONS AND CONCERNS

The gardens and trail are in good condition. Access to the river is limited and could be improved.

PARK FACILITY CONDITIONS (SITE VERIFIED)

● GOOD ● FAIR ● POOR

● RIVER/PONDS

● VIRTUES WALK

SEASONAL AMENITIES

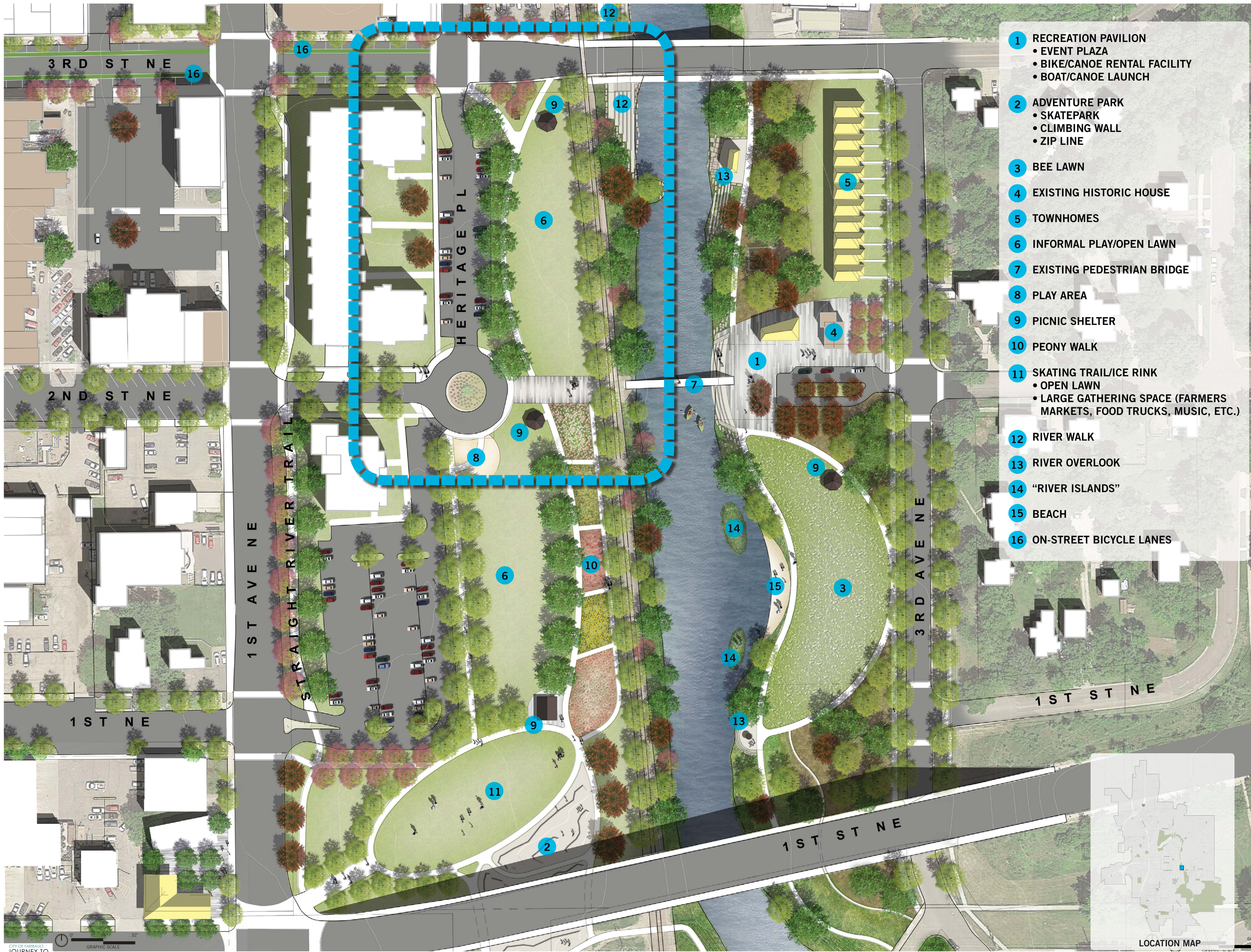
● HIGH USE ● LIMITED ● LOW USE

● SPRING

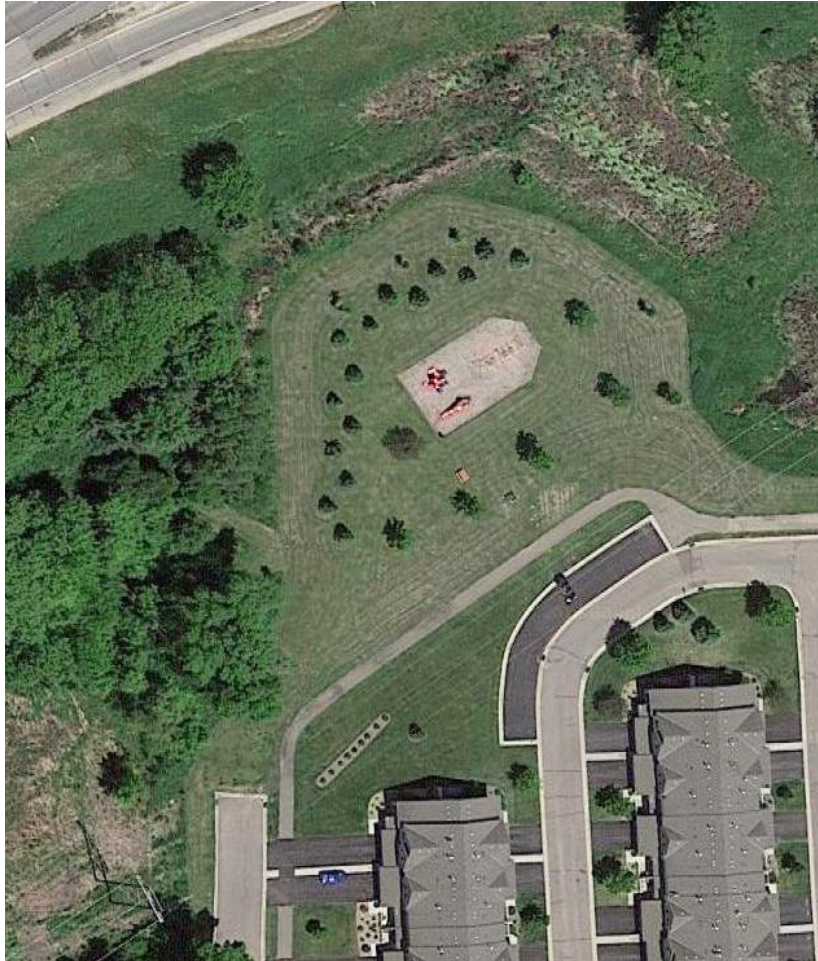
● FALL

● SUMMER

● WINTER



THE VILLAGE PARK



LOCATION : 3100 Western Avenue N

SIZE : 1.40 acres

CLASSIFICATION : Special Features

REC CENTER : No

SCHOOL CONNECTIONS : None

CURRENT PROJECTS: None



CONTEXT

The Village Park is located north of Faribault Golf & Country Club. It is also directly south of Interstate 35 and west of Lyndale Ave. Multi family homes are also adjacent.

CURRENT CONDITIONS AND CONCERNS

The playground equipment is in good shape but does not have adequate pedestrian access or meet ADA guidelines. An enhanced noise buffer to the highway may make the site more comfortable.

PARK FACILITY CONDITIONS (SITE VERIFIED)

● GOOD ● FAIR ● POOR

● PLAYGROUND

SEASONAL AMENITIES

● HIGH USE ● LIMITED ● LOW USE

● SPRING ● FALL

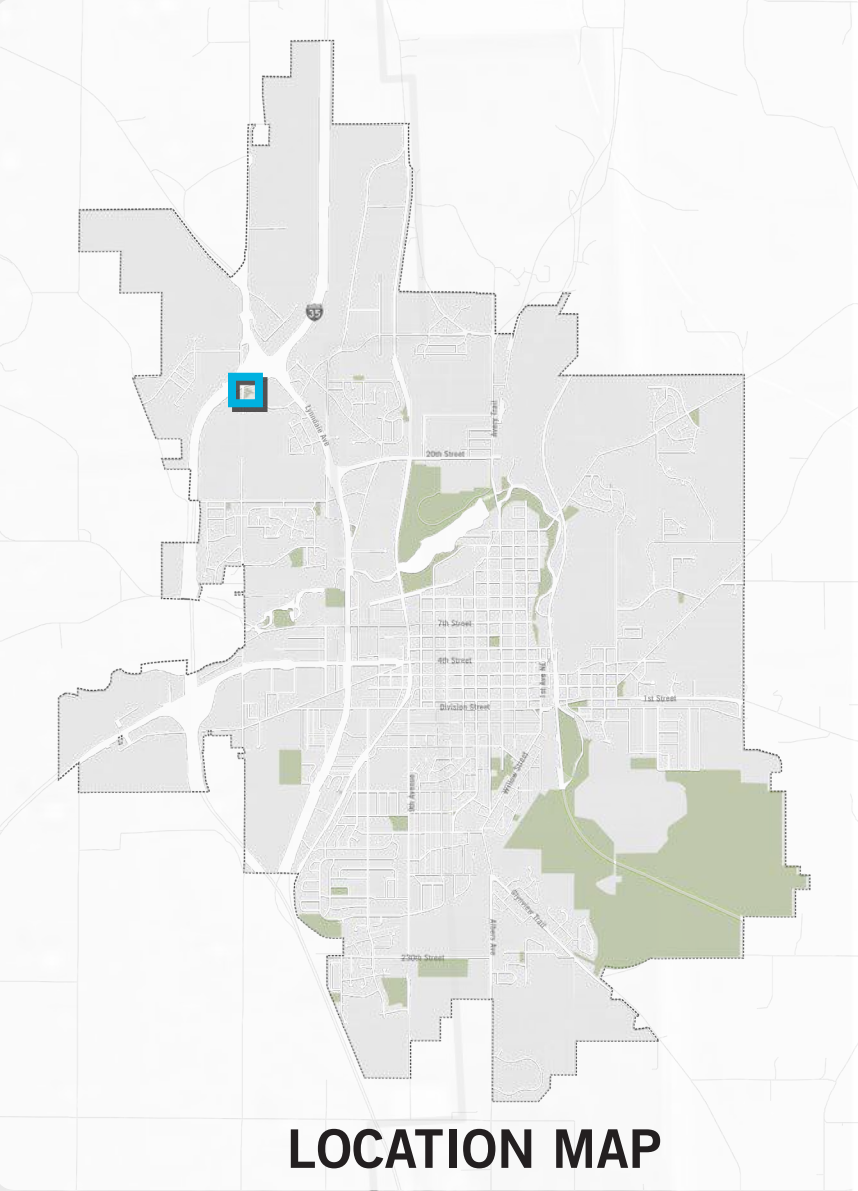
● SUMMER ● WINTER

LEGEND

- 1 PLAYGROUND
- 2 SEATING
- 3 BICYCLE PATH
- 4 WALKWAY
- 5 HALF COURT BASKETBALL
- 6 NATURE PLAY
- 7 PICNIC AREA
- 8 EXISTING PARKING



WESTERN AVE N



LOCATION MAP

WASHINGTON RECREATION CENTER



LOCATION : 117 Shumway Avenue

SIZE : 2.20 acres

CLASSIFICATION : Special Features

REC CENTER : Yes

SCHOOL CONNECTIONS : None

CURRENT PROJECTS: None



CONTEXT

Washington Recreation Center is adjacent to the New Perspectives Senior Living community on the east side of the Straight River. It has an outside park that serves as a neighborhood playground for the surrounding homes.

CURRENT CONDITIONS AND CONCERNS

The park is in fair condition. It is well maintained but does not meet ADA guidelines. The vehicular traffic is one-way and can cause confusion when accessing the park.

PARK FACILITY CONDITIONS (SITE VERIFIED)

● GOOD ● FAIR ● POOR

● PICNIC AREAS

● PLAYGROUND

SEASONAL AMENITIES

● HIGH USE ● LIMITED ● LOW USE

● SPRING

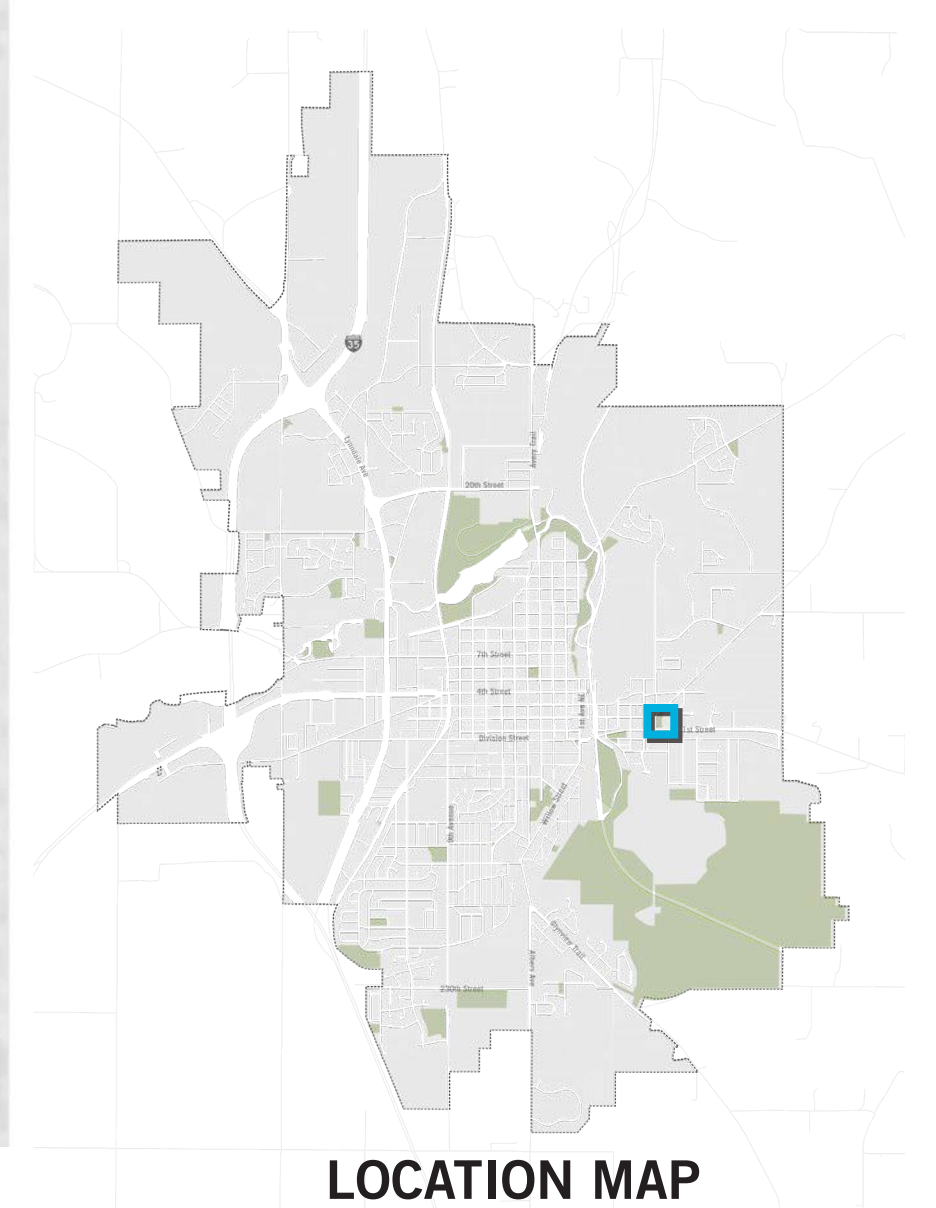
● FALL

● SUMMER

● WINTER

LEGEND

- 1 NEW PARKING CONFIGURATION
- 2 FRUIT/FLOWERING TREES
- 3 PLAYGROUND
- 4 OPEN LAWN
- 5 WALKWAY



LOCATION MAP

WHITE SANDS DOG PARK



LOCATION : 900 Lyndale Avenue N

SIZE : 8.30 acres

CLASSIFICATION : Special Features

REC CENTER : Yes

SCHOOL CONNECTIONS : None

CURRENT PROJECTS: None



CONTEXT

White Sands Dog Park is a dual use park that has been converted from an old swimming hole. The parking area serves as a park and ride. A swimming pond and nature trails make for a fun and unique experience for dog owners. You enter the park by crossing over a creek that flows into the Cannon River. The park is well buffered from surrounding uses as well. It has access to the Sakatah Singing Hills State Trail and contains a trail head.

CURRENT CONDITIONS AND CONCERNS

Overall, this park is well maintained and cared for. It is in good condition and meets many needs for the users. The picnic areas could use some improvements. A right in, right out entrance makes vehicular access challenging.

PARK FACILITY CONDITIONS (SITE VERIFIED)

● GOOD ● FAIR ● POOR

● PICNIC AREAS

● RESTROOM

● TRAILS

● RIVER/PONDS

● PARK AND RIDE

● LEASH FREE DOG PARK

SEASONAL AMENITIES

● HIGH USE ● LIMITED ● LOW USE

● SPRING

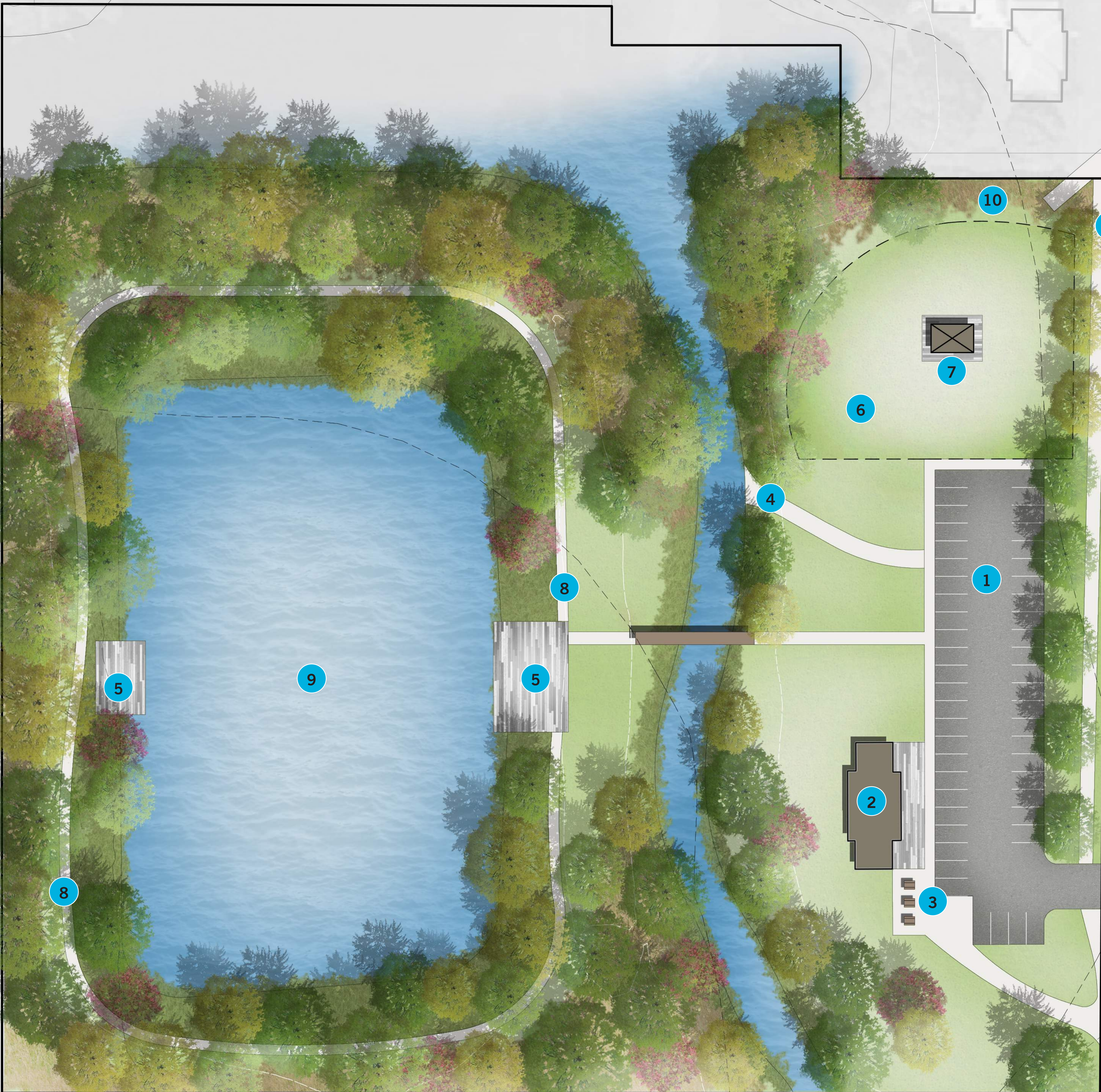
● FALL

● SUMMER

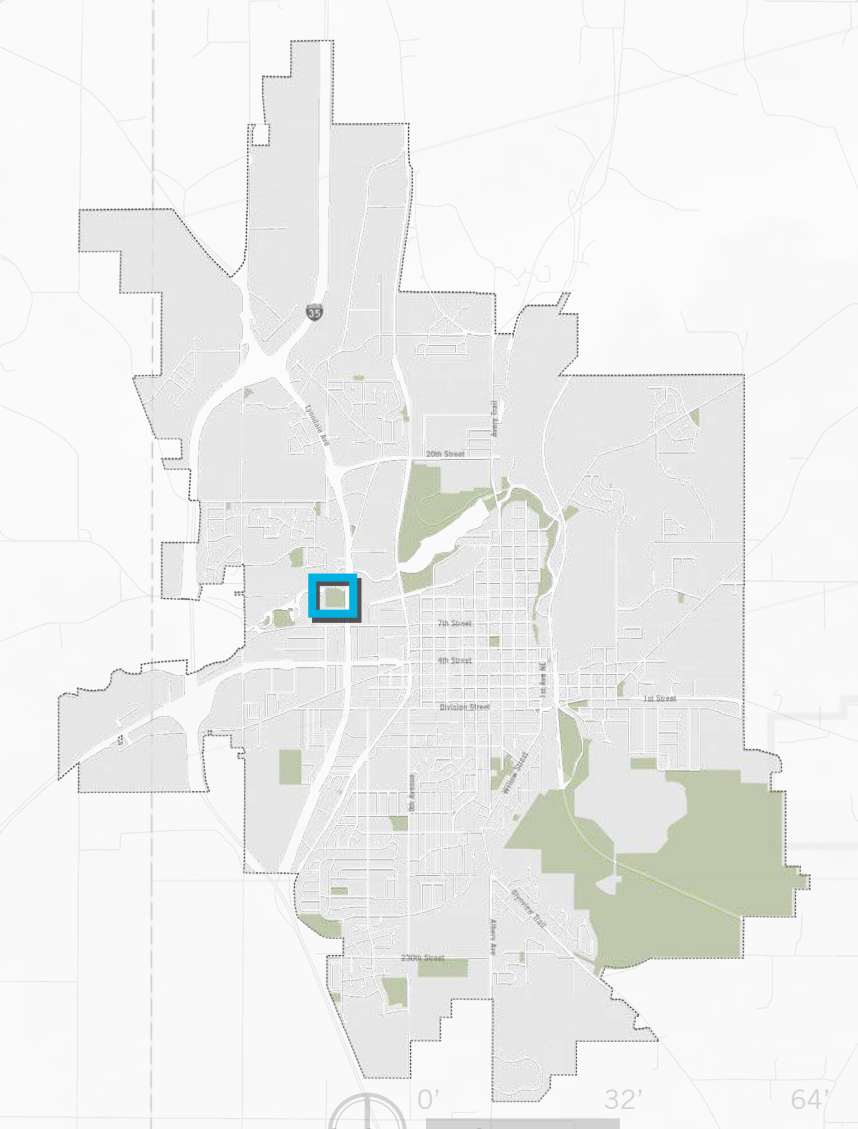
● WINTER

LEGEND

- 1 EXPANDED PARKING
- 2 EXISTING BUILDING
- 3 EXPANDED TRAILHEAD
- 4 CANOE LAUNCH
- 5 PLAZA
- 6 SMALL DOG PLAY AREA
- 7 PICNIC SHELTER
- 8 EXISTING TRAIL
- 9 EXISTING POND
- 10 PRAIRIE
- 11 TRAIL CONNECTION TO THE NORTH



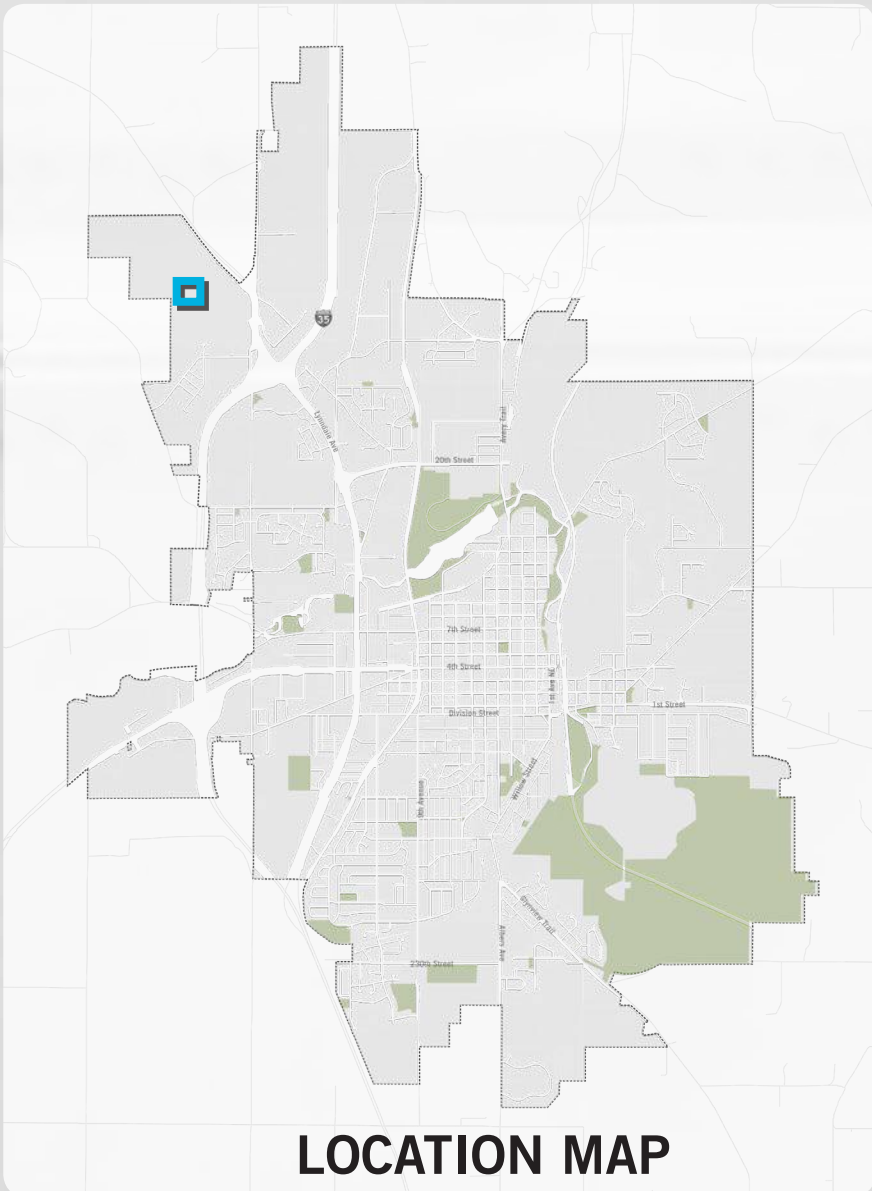
LYNDALE AVE N



LOCATION MAP

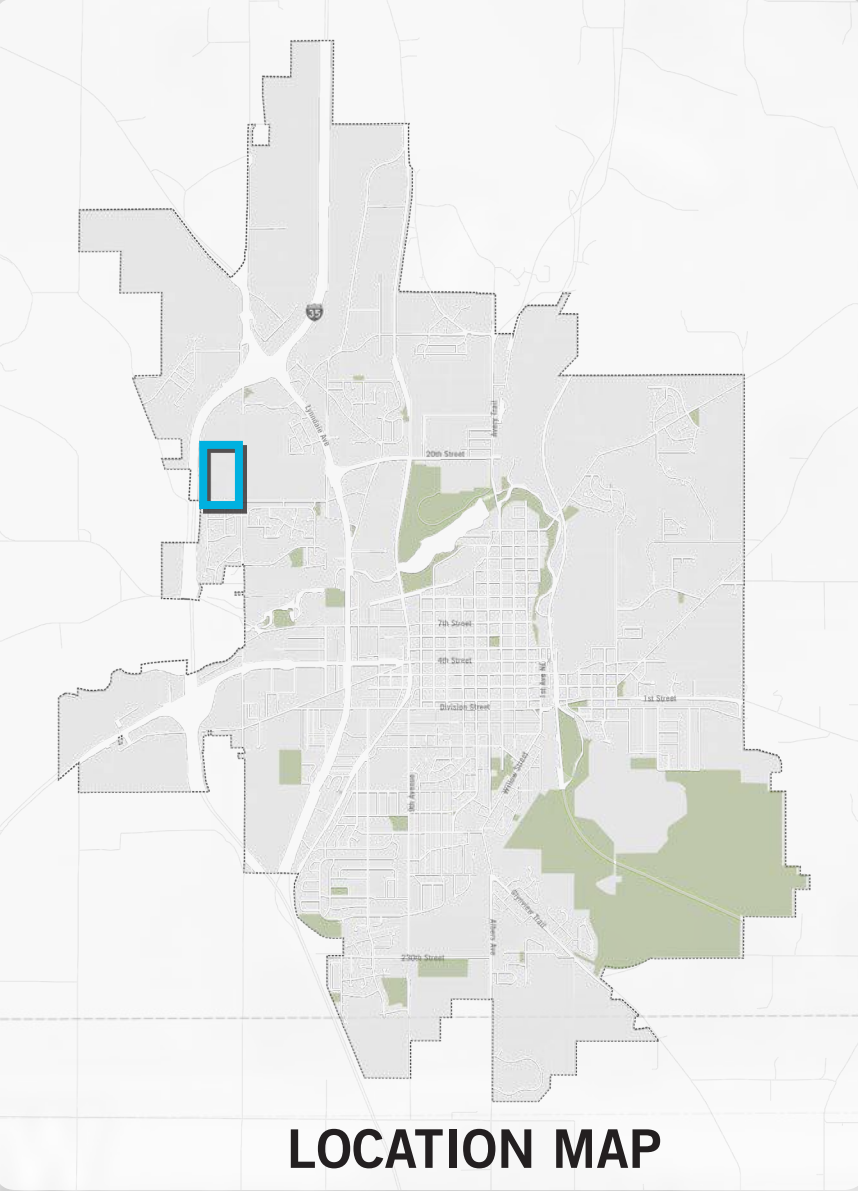
LEGEND

- 1 PARKING
- 2 EDIBLE GARDENS
- 3 EDIBLE VINE PLANTINGS
- 4 FRUIT TREES
- 5 WALKWAY
- 6 BASKETBALL COURT
- 7 EXISTING STORMWATER



LEGEND

- 1 NEW SHELTER
- 2 NATURE PLAY
- 3 PAVED PATHWAY
- 4 NATURE WALK
- 5 NATIVE PLANTING
- 6 EXISTING POND



LOCATION MAP